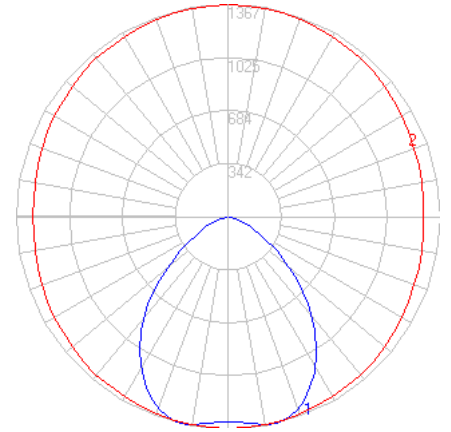


# BEGA

Photometric Filename: 77479.ies

TEST: L071704006  
 TEST LAB: LIGHT LABORATORY, INC.  
 DATE: 7/21/2017  
 LUMINAIRE: 77 479  
 LAMP: 17.9W LED



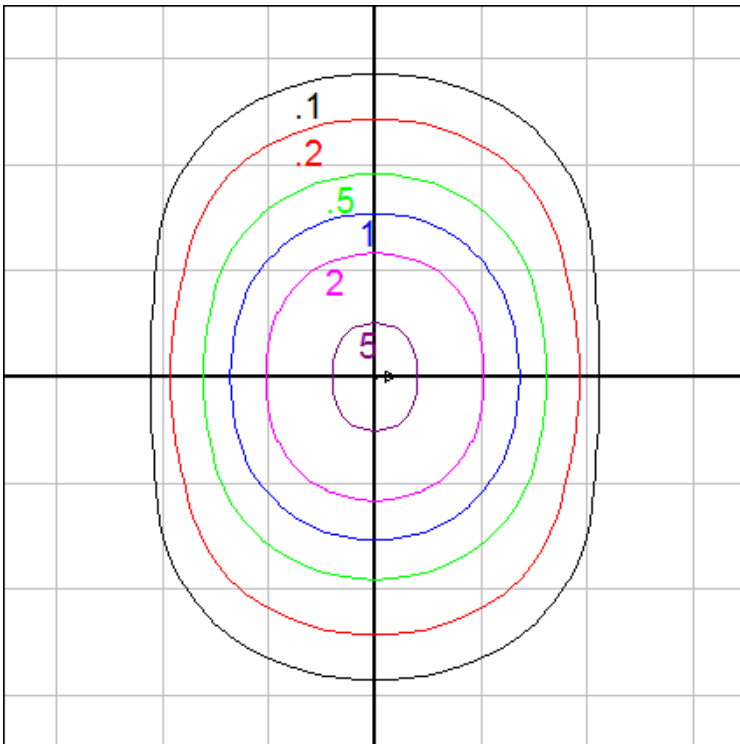
All results in accordance with IESNA LM-79-08

## Characteristics

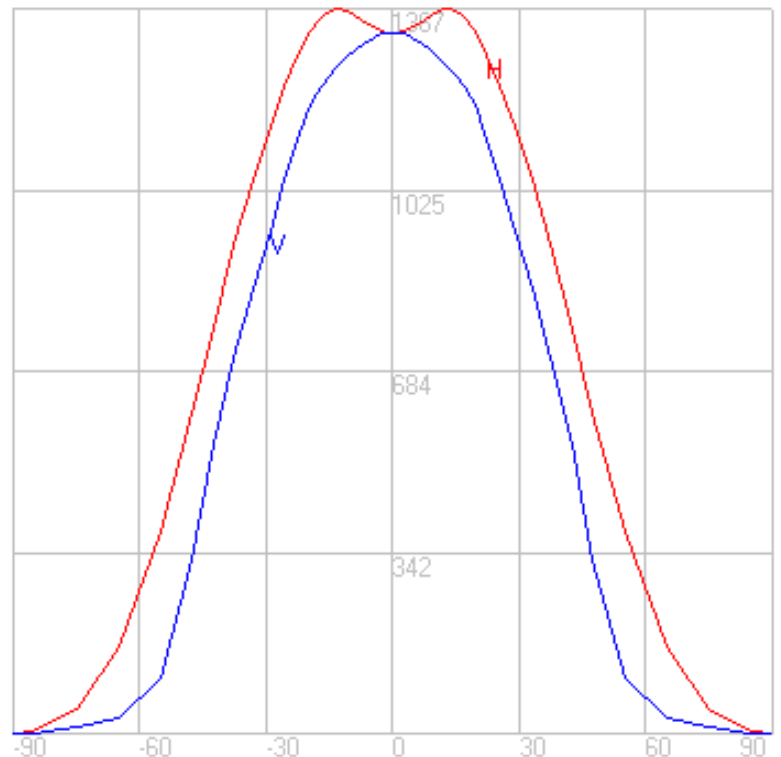
NEMA Type	7 H x 6 V
Maximum Candela	1367
Maximum Candela Angle	-13 H 0 V
Horizontal Beam Angle (50%)	90.1
Vertical Beam Angle (50%)	75.4
Horizontal Field Angle (10%)	134.4
Vertical Field Angle (10%)	108.3
Lumens Per Lamp	N.A. (absolute)
Total Lamp Lumens	N.A. (absolute)
Beam Lumens	1731
Beam Efficiency	N.A.
Field Lumens	2356
Field Efficiency	N.A.
Spill Lumens	100
Luminaire Lumens	2456
Total Efficiency	N.A.
Total Luminaire Watts	20.4
Ballast Factor	1.00
R9 Value	74.78

## Zonal Lumen Summary

Zone	Lumens
0-10	102.27
10-20	369.31
20-30	505.65
30-40	492.04
40-50	496.49
50-60	244.76
60-70	168.77
70-80	60.42
80-90	16.21
90-100	0.00
100-110	0.00
110-120	0.00
120-130	0.00
130-140	0.00
140-150	0.00
150-160	0.00
160-170	0.00
170-180	0.00



Mounting Height = 15 ft. Grid Spacing = 10 ft.

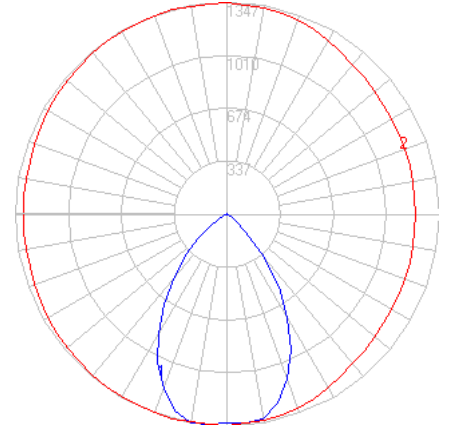


In the interest of product improvement, BEGA reserves the right to make technical changes without notice.

# BEGA

Photometric Filename: 77479\_70500.ies

TEST: L071704006  
 TEST LAB: LIGHT LABORATORY, INC.  
 DATE: 7/21/2017  
 LUMINAIRE: 77 479  
 LAMP: 17.9W LED



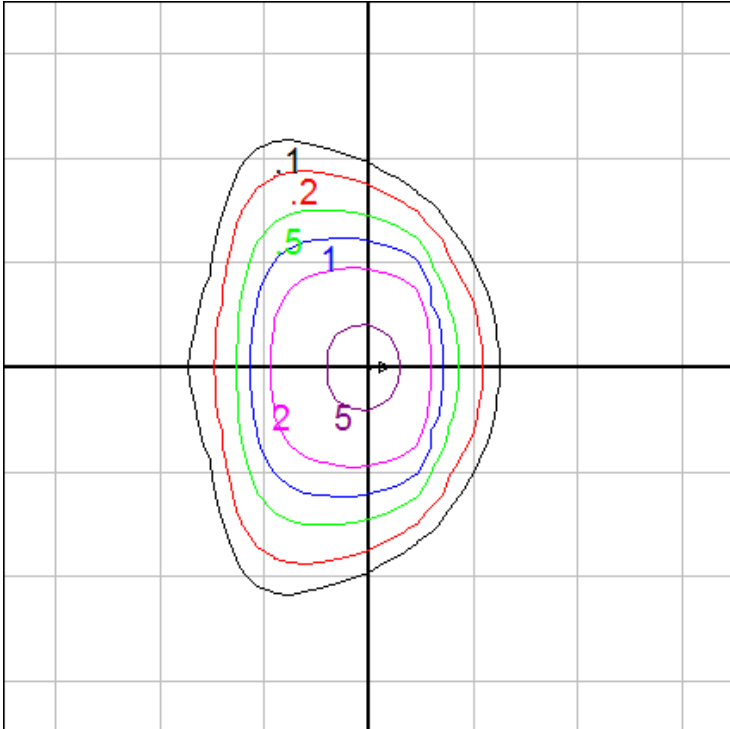
All results in accordance with IESNA LM-79-08

**Characteristics**

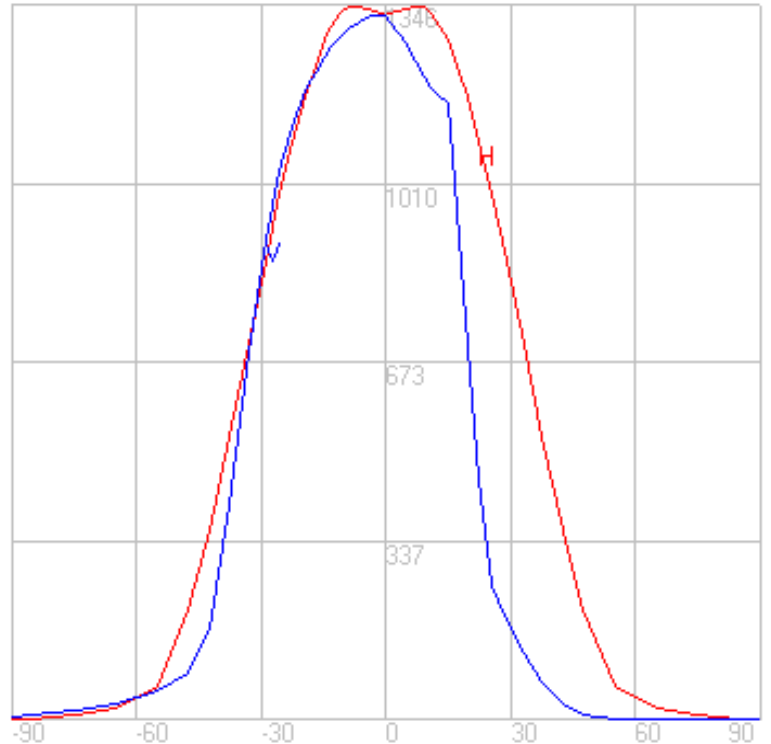
NEMA Type	6 H x 5 V
Maximum Candela	1346
Maximum Candela Angle	-9 H -3 V
Horizontal Beam Angle (50%)	68.6
Vertical Beam Angle (50%)	53.5
Horizontal Field Angle (10%)	103.5
Vertical Field Angle (10%)	76.3
Lumens Per Lamp	N.A. (absolute)
Total Lamp Lumens	N.A. (absolute)
Beam Lumens	994
Beam Efficiency	N.A.
Field Lumens	1329
Field Efficiency	N.A.
Spill Lumens	89
Luminaire Lumens	1418
Total Efficiency	N.A.
Total Luminaire Watts	20.36
Ballast Factor	1.00
R9 Value	74.78

**Zonal Lumen Summary**

Zone	Lumens
0-10	125.04
10-20	344.43
20-30	407.48
30-40	312.77
40-50	148.88
50-60	51.25
60-70	17.35
70-80	6.92
80-90	3.06
90-100	1.49
100-110	0.69
110-120	0.25
120-130	0.02
130-140	0.00
140-150	0.00
150-160	0.00
160-170	0.00
170-180	0.00



Mounting Height = 15 ft. Grid Spacing = 10 ft.



In the interest of product improvement, BEGA reserves the right to make technical changes without notice.