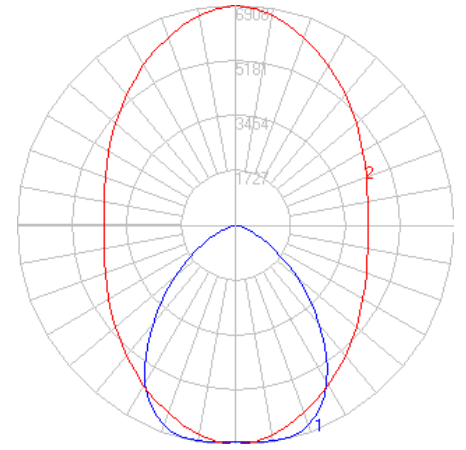


BEGA

Photometric Filename: 77434.ies

TEST: BE_77434
 TEST LAB: BEGA
 DATE: 9/22/2016
 LUMINAIRE: 77 434
 LAMP: 65.5W LED

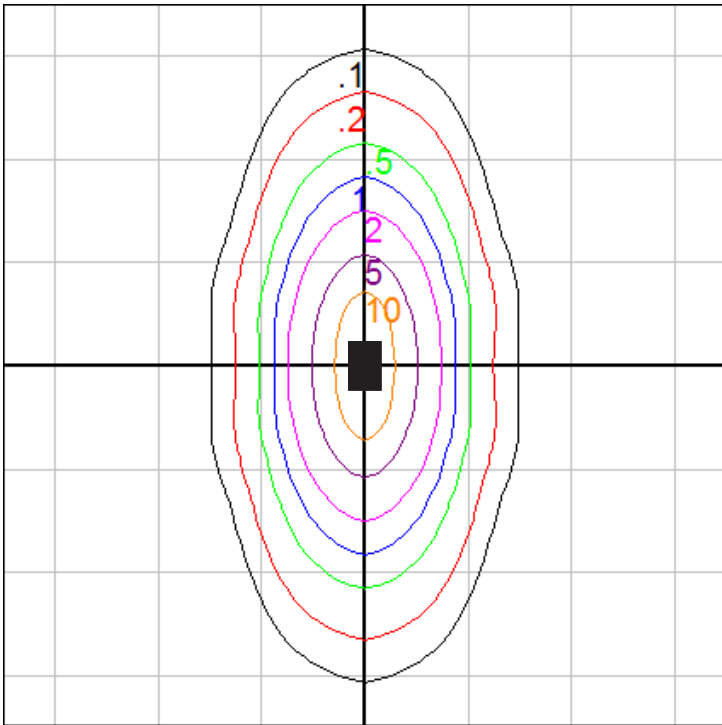


Characteristics

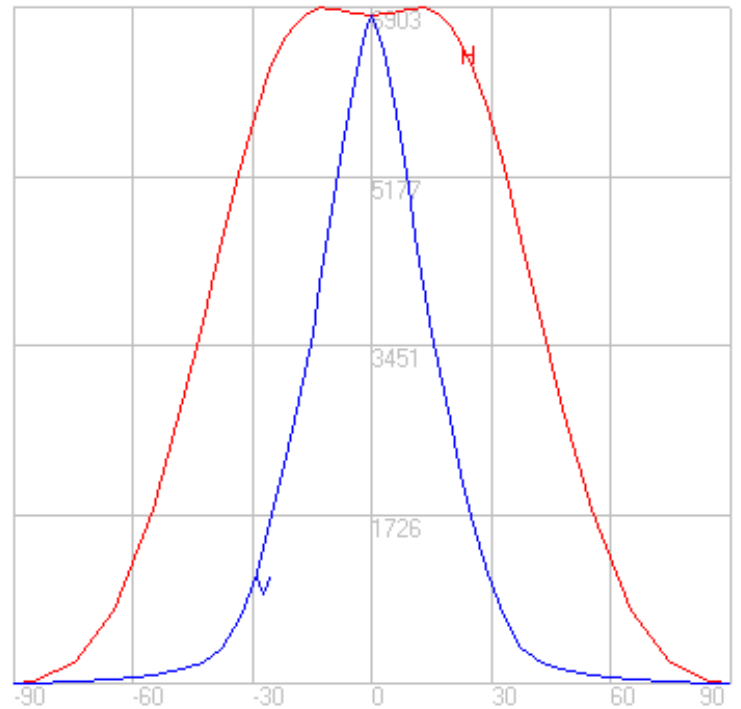
| | |
|------------------------------|-----------------|
| NEMA Type | 7 H x 4 V |
| Maximum Candela | 6902.8 |
| Maximum Candela Angle | -13 H 0 V |
| Horizontal Beam Angle (50%) | 88.0 |
| Vertical Beam Angle (50%) | 31.9 |
| Horizontal Field Angle (10%) | 131.6 |
| Vertical Field Angle (10%) | 67.6 |
| Lumens Per Lamp | N.A. (absolute) |
| Total Lamp Lumens | N.A. (absolute) |
| Beam Lumens | 3338 |
| Beam Efficiency | N.A. |
| Field Lumens | 5795 |
| Field Efficiency | N.A. |
| Spill Lumens | 558 |
| Luminaire Lumens | 6353 |
| Total Efficiency | N.A. |
| Total Luminaire Watts | 76 |
| Ballast Factor | 1.00 |

Zonal Lumen Summary

| Zone | Lumens |
|---------|---------|
| 0-10 | 590.37 |
| 10-20 | 1378.84 |
| 20-30 | 1562.57 |
| 30-40 | 1263.11 |
| 40-50 | 823.30 |
| 50-60 | 451.72 |
| 60-70 | 200.38 |
| 70-80 | 67.53 |
| 80-90 | 9.93 |
| 90-100 | 0.00 |
| 100-110 | 0.00 |
| 110-120 | 0.00 |
| 120-130 | 0.00 |
| 130-140 | 0.00 |
| 140-150 | 0.00 |
| 150-160 | 0.00 |
| 160-170 | 0.00 |
| 170-180 | 0.00 |



Mounting Height = 20 ft. Grid Spacing = 15 ft.

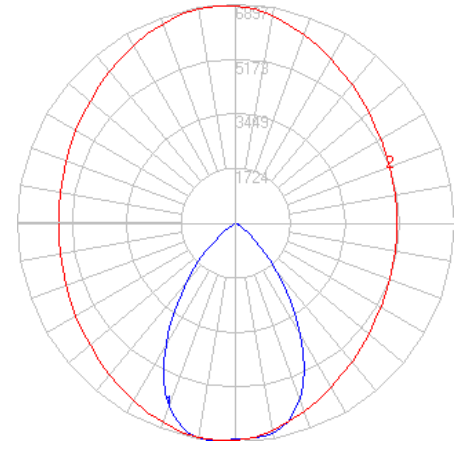


In the interest of product improvement, BEGA reserves the right to make technical changes without notice.

BEGA

Photometric Filename: 77427.ies

TEST: BE_77427
 TEST LAB: BEGA
 DATE: 9/22/2016
 LUMINAIRE: 77 427 + 70 525
 LAMP: 65.5W LED

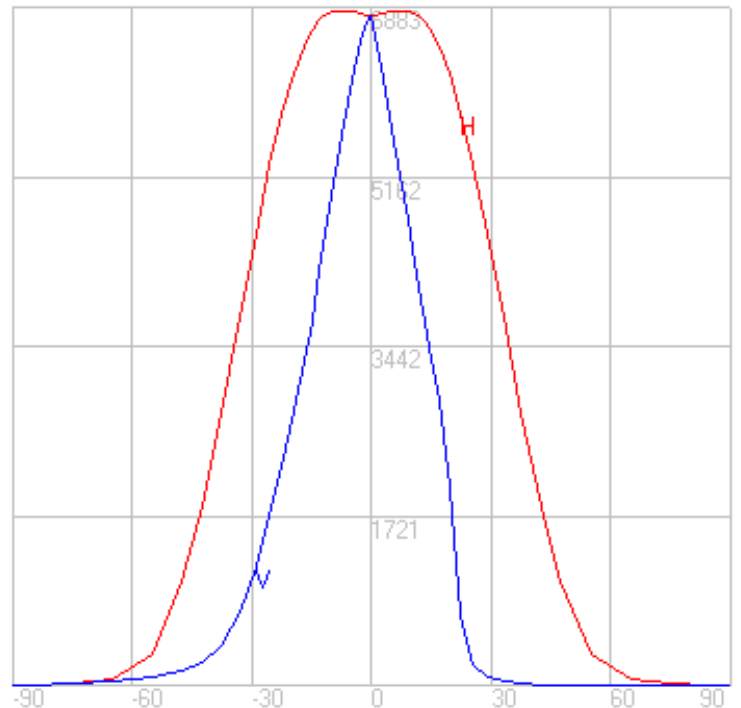
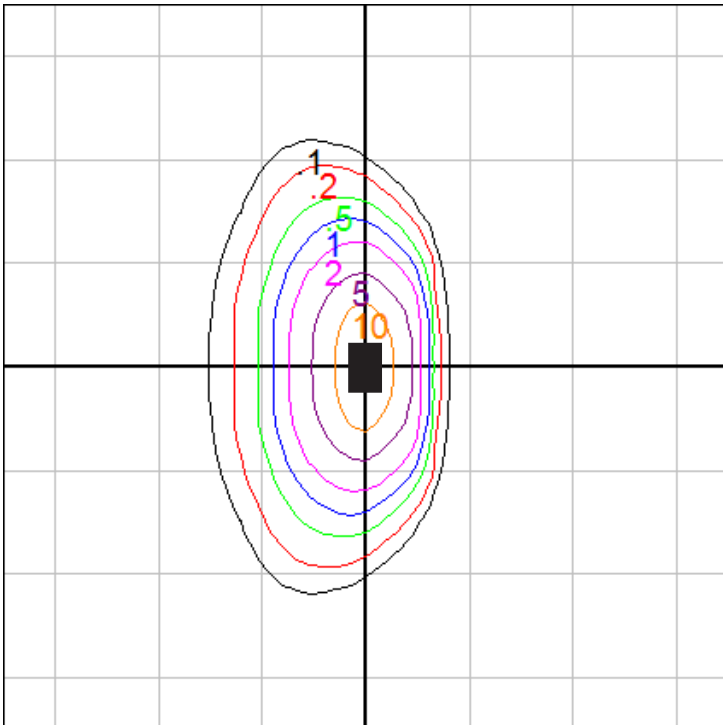


Characteristics

| | |
|------------------------------|-----------------|
| NEMA Type | 6 H x 4 V |
| Maximum Candela | 6883 |
| Maximum Candela Angle | -7 H -1 V |
| Horizontal Beam Angle (50%) | 68.8 |
| Vertical Beam Angle (50%) | 31.1 |
| Horizontal Field Angle (10%) | 103.0 |
| Vertical Field Angle (10%) | 57.2 |
| Lumens Per Lamp | N.A. (absolute) |
| Total Lamp Lumens | N.A. (absolute) |
| Beam Lumens | 2645 |
| Beam Efficiency | N.A. |
| Field Lumens | 4254 |
| Field Efficiency | N.A. |
| Spill Lumens | 387 |
| Luminaire Lumens | 4640 |
| Total Efficiency | N.A. |
| Total Luminaire Watts | 76 |
| Ballast Factor | 1.00 |

Zonal Lumen Summary

| Zone | Lumens |
|---------|---------|
| 0-10 | 580.84 |
| 10-20 | 1327.98 |
| 20-30 | 1297.09 |
| 30-40 | 827.23 |
| 40-50 | 388.67 |
| 50-60 | 138.28 |
| 60-70 | 46.73 |
| 70-80 | 17.29 |
| 80-90 | 6.53 |
| 90-100 | 0.00 |
| 100-110 | 0.00 |
| 110-120 | 0.00 |
| 120-130 | 0.00 |
| 130-140 | 0.00 |
| 140-150 | 0.00 |
| 150-160 | 0.00 |
| 160-170 | 0.00 |
| 170-180 | 0.00 |



Mounting Height = 20 ft. Grid Spacing = 15 ft.

In the interest of product improvement, BEGA reserves the right to make technical changes without notice.

BEGA 1000 Bega Way, Carpinteria, CA 93013 (805)684-0533 Fax (805)566-9474 www.bega-us.com © Copyright BEGA-US 2018

6/8/2018