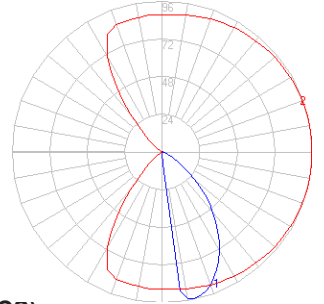


BEGA

Photometric Filename: 77238.ies

TEST: BE3729
 TEST LAB: BEGA
 DATE: 9/22/2015
 LUMINAIRE: 77 238
 LAMP: 2.1W LED



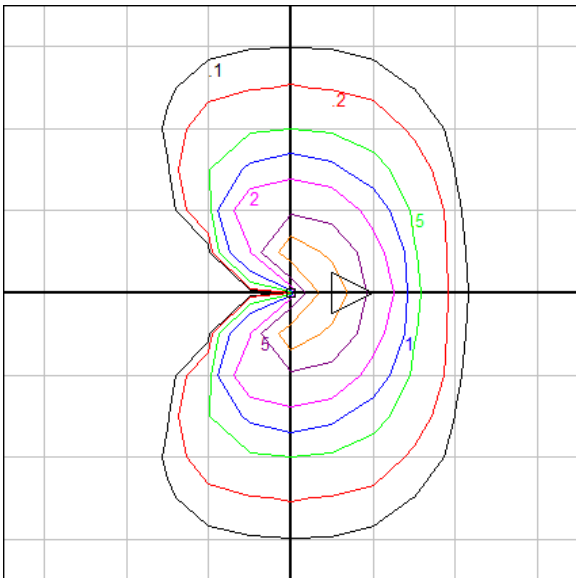
Characteristics

IES Classification	Type I
Longitudinal Classification	Very Short
Lumens Per Lamp	N.A. (absolute)
Total Lamp Lumens	N.A. (absolute)
Luminaire Lumens	136
Downward Total Efficiency	N.A.
Total Luminaire Efficiency	N.A.
Luminaire Efficacy Rating (LER)	45
Total Luminaire Watts	3
Ballast Factor	1.00
Upward Waste Light Ratio	0.00
Max. Cd.	95.8 (352.5H, 12.5V)
Max. Cd. (<90 Vert.)	95.8 (352.5H, 12.5V)
Max. Cd. (At 90 Deg. Vert.)	.6 (0.4%Lum)
Max. Cd. (80 to <90 Deg. Vert.)	4.6 (3.4%Lum)
Cutoff Classification (deprecated)	N.A. (absolute)

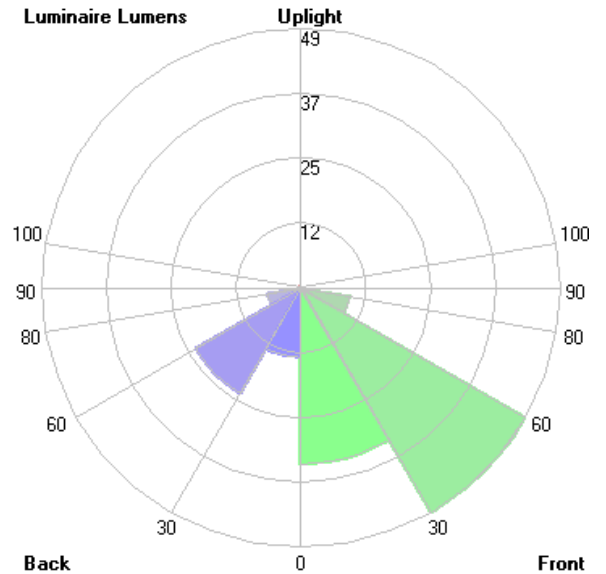
Lum. Classification System (LCS)

LCS Zone	Lumens	%Lamp	%Lum
FL (0-30)	33.4	N.A.	24.6
FM (30-60)	49.1	N.A.	36.1
FH (60-80)	9.4	N.A.	6.9
FVH(80-90)	0.6	N.A.	0.5
BL (0-30)	13.2	N.A.	9.7
BM (30-60)	23.1	N.A.	17.0
BH (60-80)	6.3	N.A.	4.7
BVH(80-90)	0.4	N.A.	0.3
UL (90-100)	0.2	N.A.	0.1
UH (100-180)	0.3	N.A.	0.2
Total	136.0	N.A.	100.0

BUG Rating B0-U1-G0



Grid Spacing = 2 ft.



In the interest of product improvement, BEGA reserves the right to make technical changes without notice.