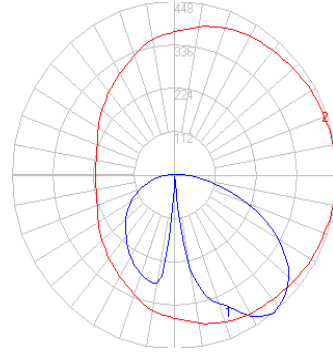


BEGA

Photometric Filename: 77150.ies

TEST: N/A
 TEST LAB: BEGA
 DATE: 08/10/2015
 LUMINAIRE: 77 150
 LAMP: 16W LED



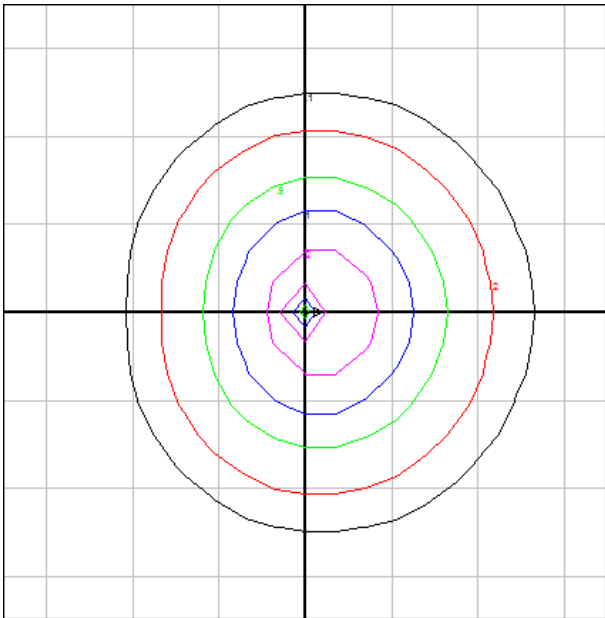
Characteristics

IES Classification	Type III
Longitudinal Classification	Very Short
Lumens Per Lamp	N.A. (absolute)
Total Lamp Lumens	N.A. (absolute)
Luminaire Lumens	1397
Downward Total Efficiency	N.A.
Total Luminaire Efficiency	N.A.
Luminaire Efficacy Rating (LER)	74
Total Luminaire Watts	19
Ballast Factor	1.00
Upward Waste Light Ratio	0.03
Max. Cd.	448.1 (360H, 37.5V)
Max. Cd. (<90 Vert.)	448.1 (360H, 37.5V)
Max. Cd. (At 90 Deg. Vert.)	36.3 (2.6%Lum)
Max. Cd. (80 to <90 Deg. Vert.)	96.4 (6.9%Lum)
Cutoff Classification (deprecated)	N.A. (absolute)

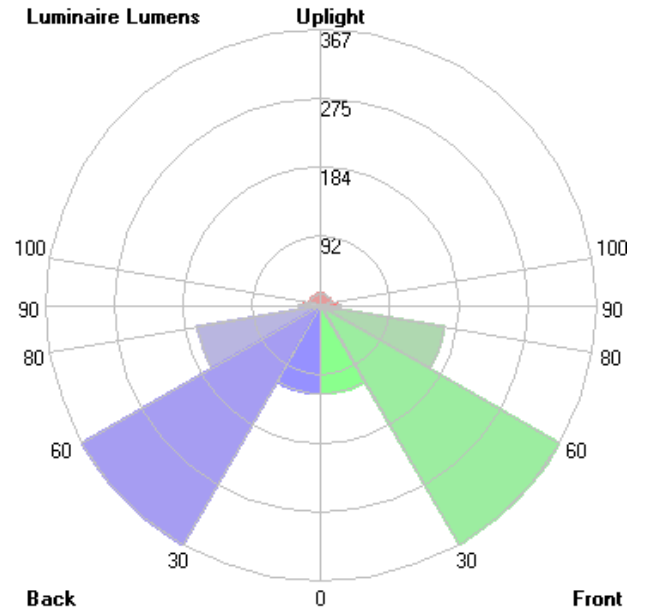
Lum. Classification System (LCS)

LCS Zone	Lumens	%Lamp	%Lum
FL (0-30)	121.8	N.A.	8.7
FM (30-60)	445.7	N.A.	31.9
FH (60-80)	202.1	N.A.	14.5
FVH(80-90)	31.5	N.A.	2.3
BL (0-30)	114.2	N.A.	8.2
BM (30-60)	288.8	N.A.	20.7
BH (60-80)	132.8	N.A.	9.5
BVH(80-90)	23.7	N.A.	1.7
UL (90-100)	21.3	N.A.	1.5
UH (100-180)	14.8	N.A.	1.1
Total	1396.7	N.A.	100.0

BUG Rating B1-U2-G1



Mounting Height = 14 ft. Grid Spacing = 10 ft.



In the interest of product improvement, BEGA reserves the right to make technical changes without notice.