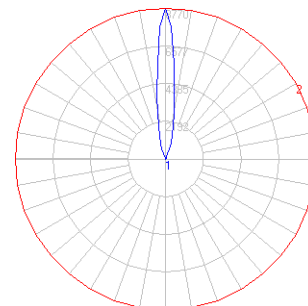


BEGA

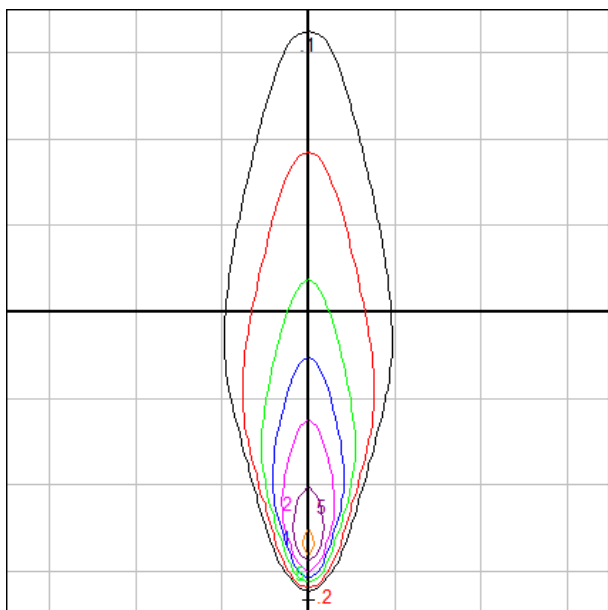
Photometric Filename: 77147.IES

TEST: BE-77147
 TEST LAB: BEGA
 DATE: 8/3/2015
 LUMINAIRE: 77 147
 LAMP: 19.3W LED

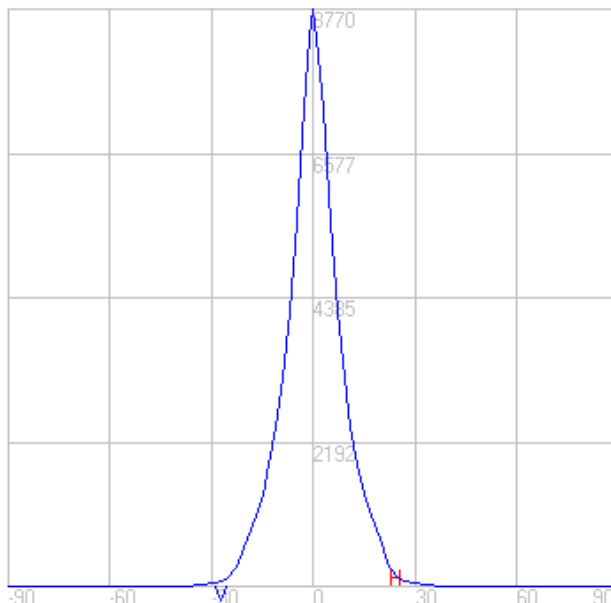


Characteristics

NEMA Type	3 H x 3 V
Maximum Candela	8769.6
Maximum Candela Angle	0 H 0 V
Horizontal Beam Angle (50%)	13.4
Vertical Beam Angle (50%)	13.4
Horizontal Field Angle (10%)	36.8
Vertical Field Angle (10%)	36.8
Lumens Per Lamp	N.A. (absolute)
Total Lamp Lumens	N.A. (absolute)
Beam Lumens	265
Beam Efficiency	N.A.
Field Lumens	796
Field Efficiency	N.A.
Spill Lumens	149
Luminaire Lumens	945
Total Efficiency	N.A.
Total Luminaire Watts	22



Fixture Setback = 1.5 ft Grid Spacing = 7.5 ft.

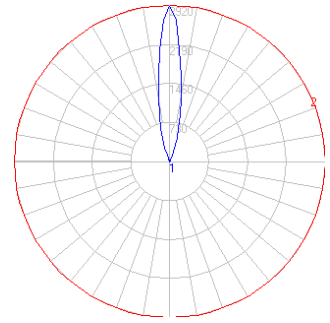


In the interest of product improvement, BEGA reserves the right to make technical changes without notice.

BEGA

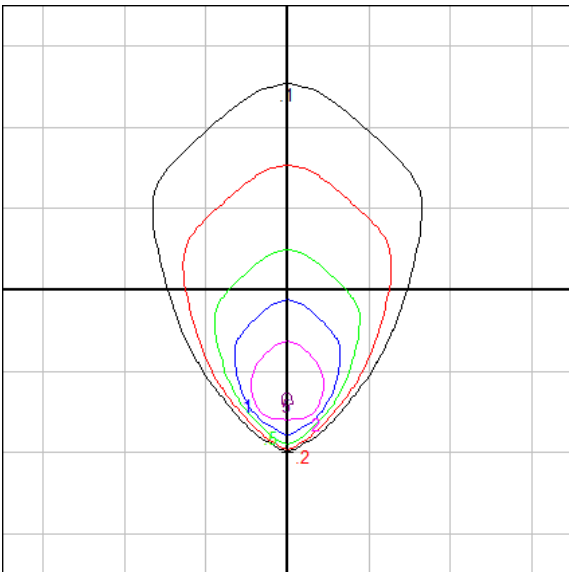
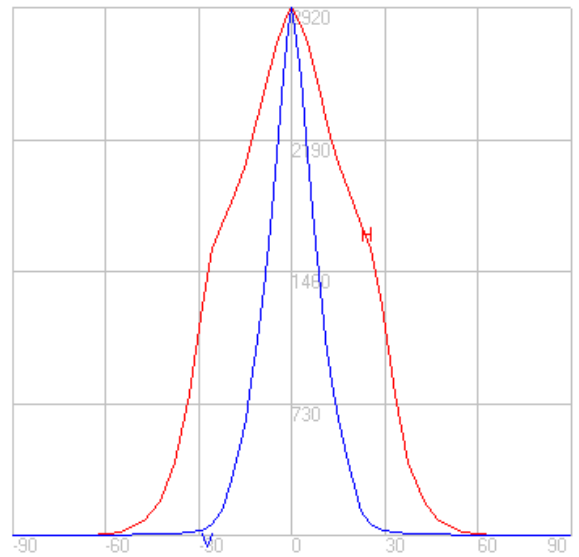
Photometric Filename: 77147_10016.IES

TEST: BE-77147_10016
 TEST LAB: BEGA
 DATE: 8/4/2015
 LUMINAIRE: 77 147 + 10 016
 LAMP: 19.3W LED

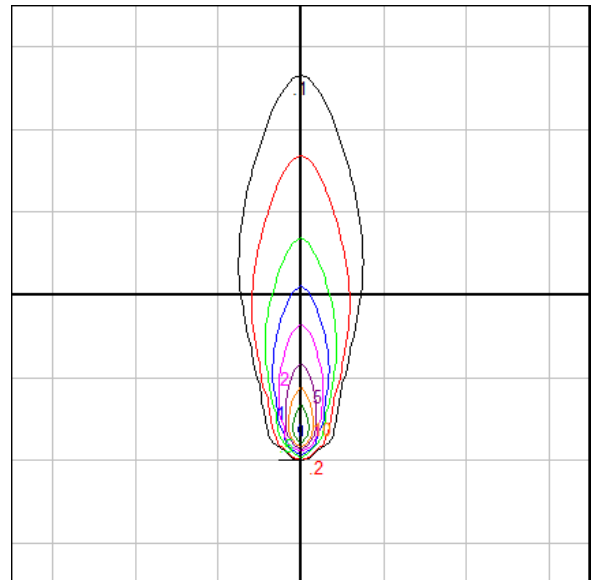


Characteristics

NEMA Type	5 H x 3 V
Maximum Candela	2920.4
Maximum Candela Angle	0 H 0 V
Horizontal Beam Angle (50%)	53.9
Vertical Beam Angle (50%)	16.9
Horizontal Field Angle (10%)	80.2
Vertical Field Angle (10%)	39.5
Lumens Per Lamp	N.A. (absolute)
Total Lamp Lumens	N.A. (absolute)
Beam Lumens	378
Beam Efficiency	N.A.
Field Lumens	818
Field Efficiency	N.A.
Spill Lumens	110
Luminaire Lumens	928
Total Efficiency	N.A.
Total Luminaire Watts	22



Fixture Setback = 1.5 ft Grid Spacing = 7.5 ft.



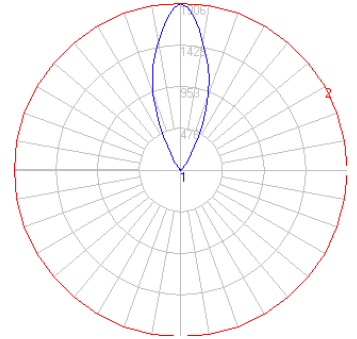
Fixture Setback = 1.5 ft Grid Spacing = 7.5 ft.

In the interest of product improvement, BEGA reserves the right to make technical changes without notice.

BEGA

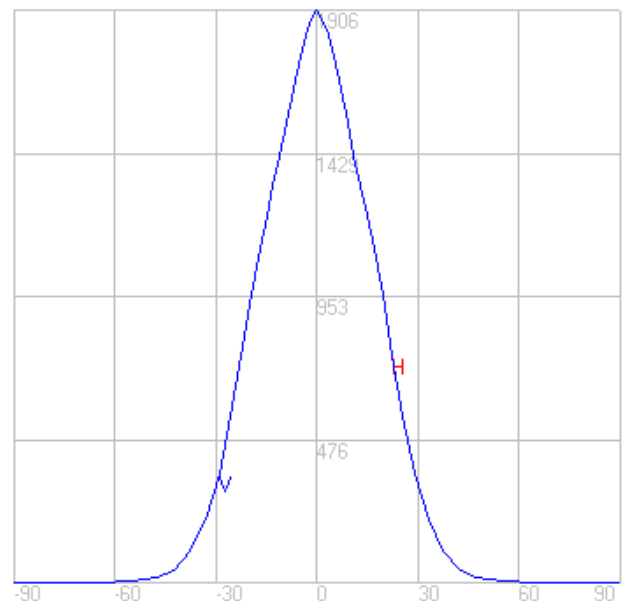
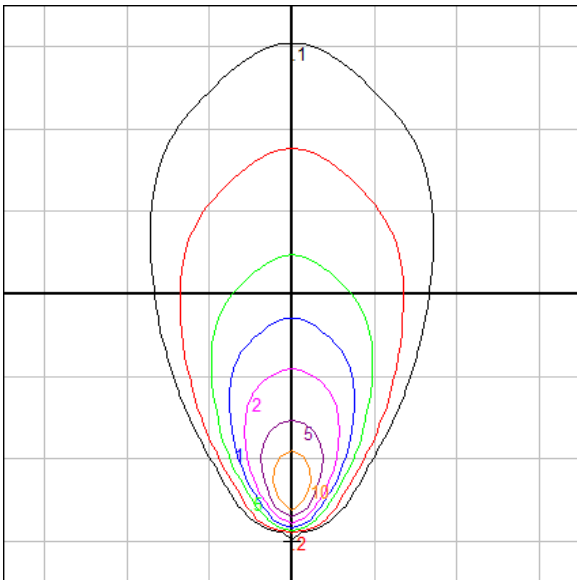
Photometric Filename: 77147_10047.IES

TEST: BE-77147_10047
 TEST LAB: BEGA
 DATE: 8/4/2015
 LUMINAIRE: 77 147 + 10 047
 LAMP: 19.3W LED



Characteristics

NEMA Type	4 H x 4 V
Maximum Candela	1905.7
Maximum Candela Angle	0 H 0 V
Horizontal Beam Angle (50%)	39.2
Vertical Beam Angle (50%)	39.2
Horizontal Field Angle (10%)	67.5
Vertical Field Angle (10%)	67.5
Lumens Per Lamp	N.A. (absolute)
Total Lamp Lumens	N.A. (absolute)
Beam Lumens	476
Beam Efficiency	N.A.
Field Lumens	816
Field Efficiency	N.A.
Spill Lumens	86
Luminaire Lumens	902
Total Efficiency	N.A.
Total Luminaire Watts	22



Fixture Setback = 1.5 ft Grid Spacing = 5 ft.

In the interest of product improvement, BEGA reserves the right to make technical changes without notice.