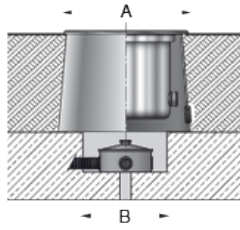


Tools Required:

- 5mm hex key
- Torque Wrench



Dimensions

- A: 11 "
- B: 13-3/4 "
- C: 8-3/8 "



Protection Class: IP68 10m

Weight: 12.3 lbs.

Notice to Installer for 77 147:

1. **BEGA luminaires may be damaged if connected to conduit systems containing water - Article 300-5G of National Electric Code requires that "Conduits or raceways through which moisture may contact energized live parts shall be sealed or plugged at either or both ends".**
2. A separate wiring box suitable for outdoor locations (Bell #5320-0 or equivalent) for power supply must be provided (by others).
3. Proper drainage **MUST** be provided. Failure to do so may cause over condensation and void warranty.
4. **FOR PROPER INSTALLATION, HOUSING AND FINISHED SURFACE MUST BE INSTALLED SO THAT THE TOP OF THE HOUSING (BOTTOM OF FACEPLATE) SITS FLUSH OR SLIGHTLY ABOVE THE FINISHED SURFACE.**
5. Must be anchored to a grade medium (1-1/2" minimum depth) which is suitable for vehicular and pedestrian loads (by others).

77 147 - outer housing installation:

1. Establish location of wiring box. (These luminaires are pre-wired with (9) feet of waterproof cable, factory sealed to the luminaire inner housing.) Make sure that enough cable is left to lift the inner housing out of the outer housing for relamping or maintenance.
2. Establish foundation for anchorage and provide proper drainage away from wiring box. **NOTE:** Foundation should be sufficient support for anticipated load onto fixture.
3. Use (4) 5/16" holes provided in outer housing flange at 90° to anchor outer housing to suitable foundation (min 1/4" anchor bolts recommended, by others). **IMPORTANT: THE TOP EDGE OF OUTER HOUSING MUST BE FLUSH OR ABOVE FINISHED SURFACE. FAILURE TO DO SO WILL PREVENT FACEPLATE SEAL AND VOID WARRANTY.** Make sure housing/finished surface is installed so the faceplate does not rest on finished surface. Use grout, nuts, and washers for leveling. Finish surface.

77 147 - inner housing installation:

1. Feed cable down outer housing and make supply wiring and cable connections inside weather-proof wiring box:
 MAIN VOLTAGE SUPPLY WIRE TO BLACK LUMINAIRE WIRE
 NEUTRAL (COMMON) SUPPLY WIRE TO WHITE LUMINAIRE WIRE
 GREEN GROUND WIRE TO GREEN LUMINAIRE WIRE

Dimming (if applicable):

- DIMMING CONTROL WIRE (+) TO POSITIVE DRIVER DIM CONTROL WIRE
 - DIMMING CONTROL WIRE (-) TO NEGATIVE DRIVER DIM CONTROL WIRE
2. Loosen (6) 5mm hex head screws on stainless steel trim and remove trim ring, glass and gasket from inner housing.
 3. Insert inner housing into outer housing, making sure the (2) side clips are loosened for fit (Fig 1, 2).
 4. Tighten (2) screws (@ 90°) until inner housing is secured to outer housing (Fig 3).
 5. To adjust beam, loosen small set screw adjacent to inner optical assembly and adjust as desired. Tight set screw to secure.
 6. Replace lens, gasket, and stainless steel trim. Tighten (6) hex screws evenly, in a star pattern, to torque value of 5 Nm. **WARNING: FAILURE TO SEAL FIXTURE CORRECTLY CAN RESULT IN WATER ENTRY AND WILL VOID FACTORY WARRANTY.**

Figure 1

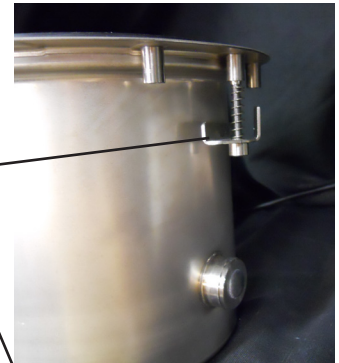


Figure 2



Figure 3



NOTE: Housing clips (2) should be loosened in the lowered position upon housing insertion. If they are tightened up close to inner housing flange, inner housing may not fit into outer housing.

Relamping/Maintenance

No relamping necessary

Accessories

Please refer to the appropriate accessory installation sheet for further instruction when applicable.

Replacement Parts

Description	Part No
Lens	141088
Lens Gasket	83001735
Driver (120-277V)	75983-02
LED Module (3000K)	LED-0437/830
LED Module (4000K)	LED-0437/840

Lamp: 19.3W LED Module

In the interest of product improvement, BEGA reserves the right to make technical changes without notice.

Product Safety Warnings:

CAUTION - RISK OF FIRE. THIS PRODUCT MUST BE INSTALLED IN ACCORDANCE WITH THE APPLICABLE INSTALLATION CODE BY A PERSON FAMILIAR WITH THE CONSTRUCTION AND OPERATION OF THE PRODUCT AND THE HAZARDS INVOLVED. SUITABLE FOR WET LOCATIONS.

MIN 90°C SUPPLY CONDUCTORS.

ATTENTION - RISQUE D'INCENDIE, CE PRODUIT DOIT ÊTRE INSTALLÉ SELON LE CODE D'INSTALLATION PERTINENT, PAR UNE PERSONNE QUI CONNAÎT BIEN LE PRODUIT ET SON FONCTIONNEMENT AINSI QUE LES RISQUES INHÉRENTS. CONVIENT AUX EMPLACEMENTS MOUILLÉS.

LES FILS D'ALIMENTATION 90°C MIN.
