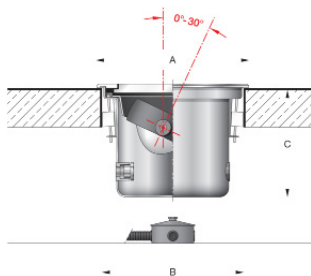


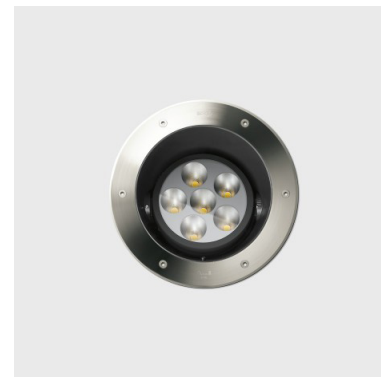
**Tools Required:**

- Small slotted standard screwdrivers
- 5 mm hex key
- 2 mm hex key
- T25 torque driver



**Dimensions**

- A:** 11"
- B:** 7-3/4"
- C:** 7-3/8"



**Protection Class:** IP68

**Weight:** 13.4 lbs.

**Notice to Installer for 77 129:**

1. **BEGA luminaires may be damaged if connected to conduit systems containing water - Article 300-5G of National Electric Code requires that "Conduits or raceways through which moisture may contact energized parts shall be sealed or plugged at either or both ends".**
2. A separate wiring box suitable for outdoor locations (Bell #5361-0 or equivalent) for power supply must be provided (by others).
3. Proper drainage **MUST** be provided. Failure to do so may result in over-condensation and void warranty.
4. For proper installation, **HOUSING AND FINISHED SURFACE MUST BE INSTALLED SO THAT THE TOP OF HOUSING (BOTTOM OF FACEPLATE) SITS FLUSH OR SLIGHTLY ABOVE THE FINISHED SURFACE.**
5. For vehicular loads, housing must be anchored to a suitable, load bearing foundation (1-1/2" minimum depth). other applications, load bearing foundation should be sufficient to support anticipated load onto fixture.
6. When installing fixture in organic mulch, surround installation housing with approximately 6" of sand or other non-organic material.
7. **ONLY HAND TOOLS MUST BE USED.**

**77 129 - housing installation in a pre-cored hole:**

1. Loosen the (6) torque head screws, and remove faceplate. Carefully pull out the gasket with diffuser. (**Fig.1**)
2. The housing is provided with three (3) wedge-shaped adjustable clamps, designed to mount to a pre-cored hole in the ground (minimum opening - 7-1/4").
3. Establish location of wiring box. (These luminaires are pre-wired with (9) feet of waterproof cable, factory to the luminaire housing.) Provide drainage.

**NOTE:** Provide at least 6" of material (pea gravel or similar) under fixture and wiring box to prevent build-up of standing water.

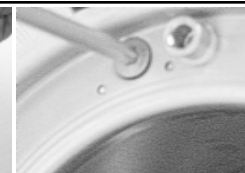
4. Make supply wiring and cable connections inside wiring box:  
 MAIN VOLTAGE SUPPLY WIRE TO BLACK LUMINAIRE WIRE  
 NEUTRAL (COMMON) SUPPLY WIRE TO WHITE LUMINAIRE WIRE  
 GREEN GROUND WIRE TO GREEN LUMINAIRE WIRE  
 0-10V Dimming (if applicable):  
 DIMMING CONTROL WIRE (+) TO PURPLE DRIVER WIRE;  
 DIMMING CONTROL WIRE (-) TO GREEN DRIVER WIRE.
5. Loosen three (3) torque-head screws to adjust clamps (**Fig.2**), and insert housing into prepared hole.
6. Tighten the socket head screws to secure the housing firmly. The top edge of housing must be flush with (or slightly above) finished surface. Make sure housing is installed so the faceplate does not rest on finished surface.

**77 129 - Faceplate installation:**

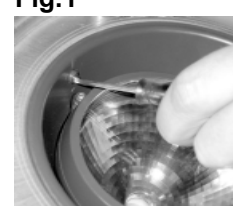
1. Loosen the socket-head screw on the reflector assembly (**Fig.3**), and remove lens retaining ring. Replace retaining ring, and tighten screw.
2. To adjust orientation, loosen (1) set screw on the reflector housing. Adjust and tighten screw (**Fig.4**).
3. Replace diffuser with gasket such that the grooved side is facing downwards, and the cutouts in the gasket align with the screw holes on the housing. Make sure gasket is seated properly to ensure proper seal.
4. Replace faceplate and tighten the (6) M6 flathead screws firmly and evenly in a criss-cross pattern. Torque - 44.5 lbf-in.



**Fig.1**



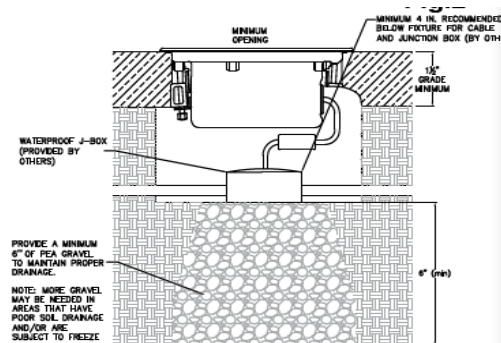
**Fig.2**



**Fig.3**



**Fig.4**



**NOTE:** Graphic is generic. Please see fixture submittal drawing for more detail.  
[www.bega-us.com](http://www.bega-us.com)

**Relamping/Maintenance**

No relamping necessary.

**Accessories**

Please refer to the appropriate accessory installation sheet for further instruction when applicable.

- Round symmetrical spread lens 10 047
- Elliptical spread lens 10 016

**Replacement Parts**

Description	Part No
Diffuser	141088
Gasket	831483
Driver (120-277V)	75983-02
LED Module (4000K)	LED-0437/840

**Lamp:** 19.3W LED

In the interest of product improvement, BEGA reserves the right to make technical changes without notice.