

Application

In-grade asymmetric floodlight luminaires. These luminaires are designed to bear pressure loads up to 4400 lbs. from vehicles with pneumatic tires. The luminaires must not be used for traffic lanes where they are subject to horizontal pressure from vehicles braking, accelerating and changing direction.

Materials

- Clear safety glass
- Molybdenum-bearing 316 grade stainless steel
- High temperature silicone gasket
- Mechanically captive stainless steel fasteners
- Fully potted waterstopper cable
- Pure anodized aluminum reflector surface

NRTL listed to North American Standards, suitable for wet locations
Protection class IP 68

Weight: 5.7 lbs.

Electrical

Operating voltage	120-277VAC
Minimum start temperature	-30° C
LED module wattage	10.5W
System wattage	12.8W
Controllability	0-10V, TRIAC, and ELV dimmable
Color rendering index	Ra > 80
Luminaire lumens	800lm
LED service life (L70)	60000hrs

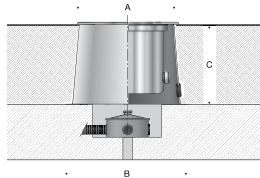
LED color temperature

- 4000K (K4)
- 3500K (K35)
- 3000K (K3)
- 2700K (K27)

BEGA can supply you with suitable LED replacement modules for up to 20 years after the purchase of LED luminaires - see website for details

Finish

#4 brushed stainless steel. Custom colors are not available.



In-grade luminaire · Asymmetric

	LED	□	A	B	C
B77106	10.5W	28°x29°	8	10 ⁵ / ₈	7 ¹ / ₂

Type:

BEGA Product:

Project:

Modified:

Available options

- FSC Fusing
- NSL Non-skid lens

Included (available for pre-shipment)

- B680 Installation housing

