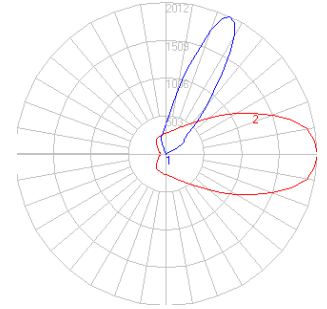


# BEGA

Photometric Filename: 77106.ies

TEST: N/A  
 TEST LAB: N/A  
 DATE: 5/24/2013  
 LUMINAIRE: 77 106  
 LAMP: 10.5W LED

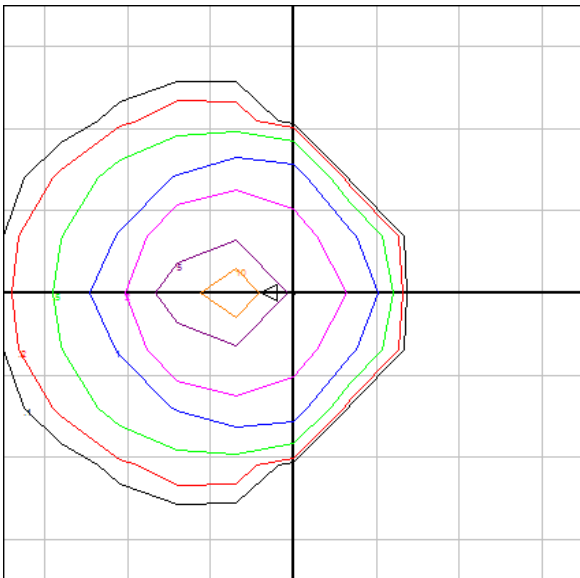


### Characteristics

Lumens Per Lamp	N.A.
Total Lamp Lumens	N.A.
Luminaire Lumens	800
Total Luminaire Efficiency	N.A.
Luminaire Efficacy Rating (LER)	62
Total Luminaire Watts	13
Ballast Factor	1.00
CIE Type	Indirect
Spacing Criterion (0-180)	N.A.
Spacing Criterion (90-270)	N.A.
Spacing Criterion (Diagonal)	N.A.
Basic Luminous Shape	Circular
Luminous Length (0-180)	0.00 m
Luminous Width (90-270)	0.14 m (Diameter)
Luminous Height	0.00 m
R9 Value	N.A.

### Zonal Lumen Summary

Zone	Lumens
0-10	0.00
10-20	0.00
20-30	0.00
30-40	0.00
40-50	0.00
50-60	0.00
60-70	0.00
70-80	0.00
80-90	0.00
90-100	0.00
100-110	0.24
110-120	3.88
120-130	55.84
130-140	117.05
140-150	200.06
150-160	238.51
160-170	144.46
170-180	40.41



Mounting Height = 10 ft. Grid Spacing = 5 ft.

In the interest of product improvement, BEGA reserves the right to make technical changes without notice.