

Application

In-grade luminaire to illuminate ground surfaces. Equipped with four 60° light apertures in all directions. These luminaires affix to a recessed BEGA junction box, supplied with luminaire, eliminating the need for deep recessed housings.

Materials

Borosilicate glass
 Marine grade, copper free (≤0.3% copper content) A360.0 aluminum alloy
 High temperature silicone gasket
 Pure anodized aluminum reflector

NRTL listed to North American Standards, suitable for wet locations
 Protection class IP 67

Weight: 6.4 lbs.

Electrical

LED module wattage 11.8 W
 System wattage 16.0 W
 Color rendering index Ra > 80
 Luminaire lumens 265 lm
 LED service life (L70) 60000 hrs

LED color temperature

4000K (K4)
 3500K (K35)
 3000K (K3)
 2700K (K27)

BEGA can supply you with suitable LED replacement modules for up to 20 years after the purchase of LED luminaires - see website for details

Finish

All BEGA standard finishes are matte, textured powder coat with minimum 3 mil thickness. BEGA Unidure® finish, a fluoropolymer technology, provides superior fade protection in Black, Bronze, and Silver. BEGA standard White is a super durable polyester powder. Optionally available RAL and custom color finishes provided in either polyester powder or liquid paint.

Available colors

Black (BLK) Bronze (BRZ)
 Silver (SLV) White (WHT)
 RAL: CUS:

Type:

BEGA Product:

Project:

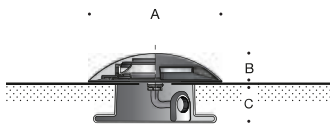
Modified:

Available options

AMB Amber LED
 CUS Custom finish
 FSC Fusing
 MGU Marine grade undercoat
 RAL RAL finish

Included (available for pre-shipment)

BB7089LED Installation housing



Ground-mounted luminaire · Four 60° ports

	LED	A	B	C
B77090	11.8W	10 1/2	2 1/4	1 1/2

