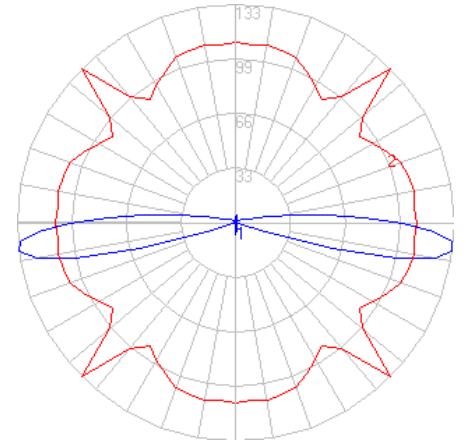


BEGA

Photometric Filename: 77090.IES

TEST: BE_77090
 TEST LAB: BEGA
 DATE: 7/12/2017
 LUMINAIRE: 77 090
 LAMP: 11.8W LED



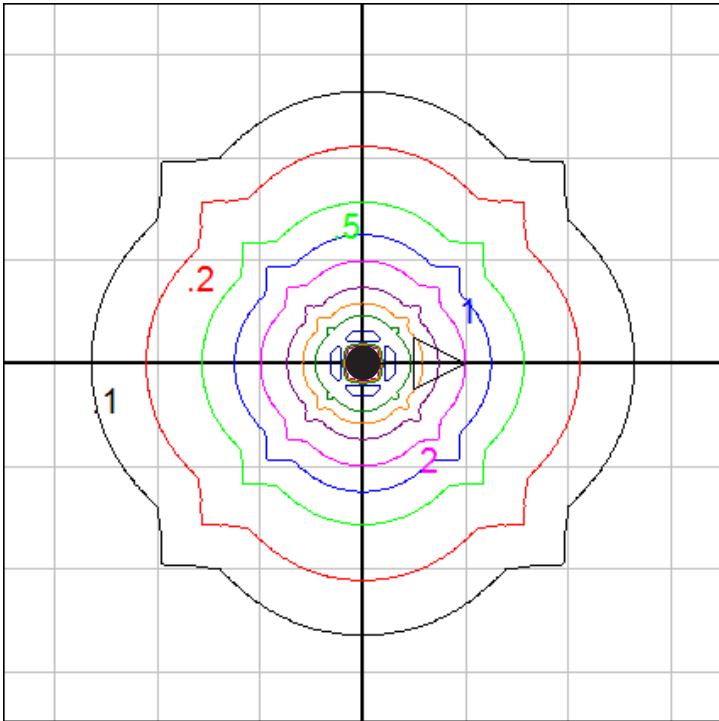
Characteristics

IES Classification	Type VS
Longitudinal Classification	Long
Lumens Per Lamp	N.A. (absolute)
Total Lamp Lumens	N.A. (absolute)
Luminaire Lumens	265
Downward Total Efficiency	N.A.
Total Luminaire Efficiency	N.A.
Luminaire Efficacy Rating (LER)	17
Total Luminaire Watts	16
Ballast Factor	1.00
Upward Waste Light Ratio	0.30
Max. Cd.	132.6 (45H, 82.5V)
Max. Cd. (<90 Vert.)	132.6 (45H, 82.5V)
Max. Cd. (At 90 Deg. Vert.)	101.1 (38.2%Lum)
Max. Cd. (80 to <90 Deg. Vert.)	132.6 (50.0%Lum)
Cutoff Classification (deprecated)	N.A. (absolute)

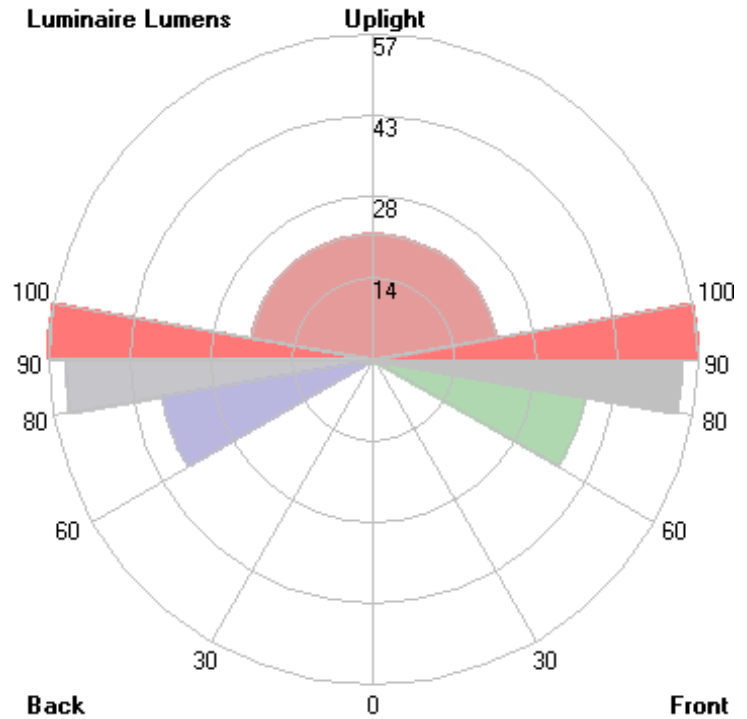
Lum. Classification System (LCS)

LCS Zone	Lumens	%Lamp	%Lum
FL (0-30)	0.5	N.A.	0.2
FM (30-60)	1.1	N.A.	0.4
FH (60-80)	37.5	N.A.	14.2
FVH (80-90)	54.0	N.A.	20.4
BL (0-30)	0.5	N.A.	0.2
BM (30-60)	1.1	N.A.	0.4
BH (60-80)	37.5	N.A.	14.2
BVH (80-90)	54.0	N.A.	20.4
UL (90-100)	56.9	N.A.	21.5
UH (100-180)	21.8	N.A.	8.2
Total	264.9	N.A.	100.0

BUG Rating B0-U3-G1



Grid Spacing = 2 ft.



In the interest of product improvement, BEGA reserves the right to make technical changes without notice.