

Application

In-grade luminaire to illuminate ground surfaces. Equipped with two 90° light apertures to create a visual boundary on the edge of a pathway. These luminaires affix to a recessed BEGA junction box, supplied with luminaire, eliminating the need for deep recessed housings.

Materials

Borosilicate glass
 Marine grade, copper free ($\leq 0.3\%$ copper content) A360.0 aluminum alloy
 High temperature silicone gasket
 Pure anodized aluminum reflector

NRTL listed to North American Standards, suitable for wet locations
 Protection class IP 67

Weight: 6.4 lbs.

Electrical

Operating voltage 120-277V AC
 Minimum start temperature -30°C
 LED module wattage 5.9W
 System wattage 9.3W
 Controllability 0-10V dimmable
 Color rendering index $R_a > 80$
 Luminaire lumens 177 lm
 LED service life (L70) 60000 hrs

LED color temperature

- 4000K (K4)
- 3500K (K35)
- 3000K (K3)
- 2700K (K27)

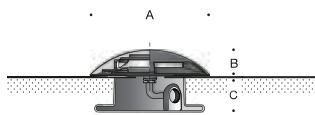
BEGA can supply you with suitable LED replacement modules for up to 20 years after the purchase of LED luminaires - see website for details

Finish

All BEGA standard finishes are matte, textured powder coat with minimum 3 mil thickness. BEGA Unidure® finish, a fluoropolymer technology, provides superior fade protection in Black, Bronze, and Silver. BEGA standard White is a super durable polyester powder. Optionally available RAL and custom color finishes provided in either polyester powder or liquid paint.

Available colors

- Black (BLK)
- Silver (SLV)
- RAL:
- Bronze (BRZ)
- White (WHT)
- CUS:



Ground-mounted luminaire · Twin 90° ports

	LED	A	B	C
B77089	5.9W	10 ¹ / ₂	2 ¹ / ₄	1 ¹ / ₂

Type:

BEGA Product:

Project:

Modified:

Available options

- AMB Amber LED
- CUS Custom finish
- FSC Fusing
- MGU Marine grade undercoat
- RAL RAL finish

Included (available for pre-shipment)

- BB7089LED Installation housing

