

**Application**

In-grade luminaire to illuminate ground surfaces. Equipped with four 60° light apertures in all directions. These luminaires affix to a recessed BEGA junction box, supplied with luminaire, eliminating the need for deep recessed housings.

**Materials**

Borosilicate glass  
 Marine grade, copper free (≤0.3% copper content) A360.0 aluminum alloy  
 High temperature silicone gasket  
 Pure anodized aluminum reflector

**NRTL** listed to North American Standards, suitable for wet locations  
 Protection class IP 67

**Weight:** 2.1 lbs.

**Electrical**

LED module wattage            2.5 W  
 System wattage                2.5 W  
 Color rendering index        Ra > 80  
 Luminaire lumens              19lm  
 LED service life (L70)       60000hrs

**LED color temperature**

4000K (K4)  
 3500K (K35)  
 3000K (K3)  
 2700K (K27)

**BEGA** can supply you with suitable LED replacement modules for up to 20 years after the purchase of LED luminaires - see website for details

**Finish**

All BEGA standard finishes are matte, textured powder coat with minimum 3 mil thickness. BEGA Unidure® finish, a fluoropolymer technology, provides superior fade protection in Black, Bronze, and Silver. BEGA standard White is a super durable polyester powder. Optionally available RAL and custom color finishes provided in either polyester powder or liquid paint.

**Available colors**

Black (BLK)	Bronze (BRZ)
Silver (SLV)	White (WHT)
RAL:	CUS:

Type:

BEGA Product:

Project:

Modified:

**Available options**

CUS	Custom finish
FSC	Fusing
MGU	Marine grade undercoat
RAL	RAL finish

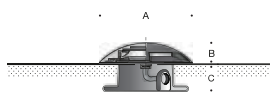
**Available accessories**

B19580	Remote driver box · Static white
B19591	Remote driver box · Static white

See individual accessory spec sheet for details.

**Included (available for pre-shipment)**

BB7069LED Installation housing



**Ground-mounted luminaire · Four 60° ports • 24V DC**

	LED	A	B	C
<b>B77070</b>	2.5W	6 <sup>1</sup> / <sub>4</sub>	1 <sup>1</sup> / <sub>2</sub>	1 <sup>3</sup> / <sub>4</sub>

