

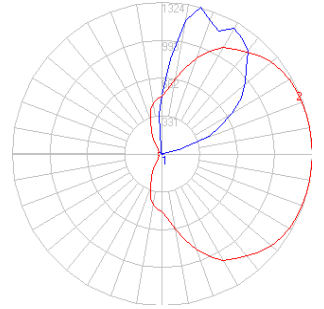
BEGA

Photometric Filename: 77024.ies

TEST: L01145204
 TEST LAB: LUMINAIRE TESTING LABORATORY, INC.
 DATE: 1/30/14
 LUMINAIRE: 77 024
 LAMP: 25.3W LED



All results in accordance with IESNA LM-79-08

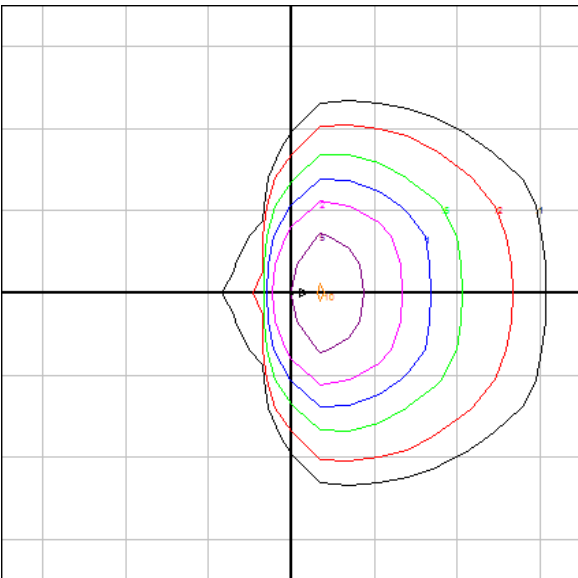


Characteristics

Lumens Per Lamp	N.A. (absolute)
Total Lamp Lumens	N.A. (absolute)
Luminaire Lumens	1914
Total Luminaire Efficiency	N.A.
Luminaire Efficacy Rating (LER)	68
Total Luminaire Watts	28.2
Ballast Factor	1.00
CIE Type	Indirect
Spacing Criterion (0-180)	N.A.
Spacing Criterion (90-270)	N.A.
Spacing Criterion (Diagonal)	N.A.
Basic Luminous Shape	Rectangular
Luminous Length (0-180)	0.55 ft
Luminous Width (90-270)	0.55 ft
Luminous Height	0.00 ft
R9 Value	21.99

Zonal Lumen Summary

Zone	Lumens
0-10	0.00
10-20	0.00
20-30	0.00
30-40	0.00
40-50	0.00
50-60	0.00
60-70	0.00
70-80	0.00
80-90	1.08
90-100	6.61
100-110	73.67
110-120	221.60
120-130	344.58
130-140	392.59
140-150	366.02
150-160	278.41
160-170	174.99
170-180	54.41



Mounting Height = 10 ft. Grid Spacing = 10 ft.

In the interest of product improvement, BEGA reserves the right to make technical changes without notice.