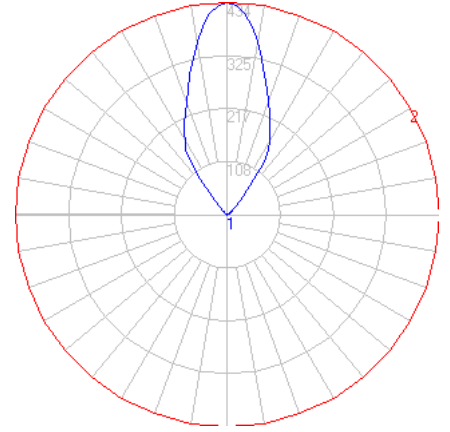


# BEGA

Photometric Filename: 77010.ies

TEST: BE\_77010  
 TEST LAB: BEGA  
 DATE: 2/8/2017  
 LUMINAIRE: 77 010  
 LAMP: 3W LED

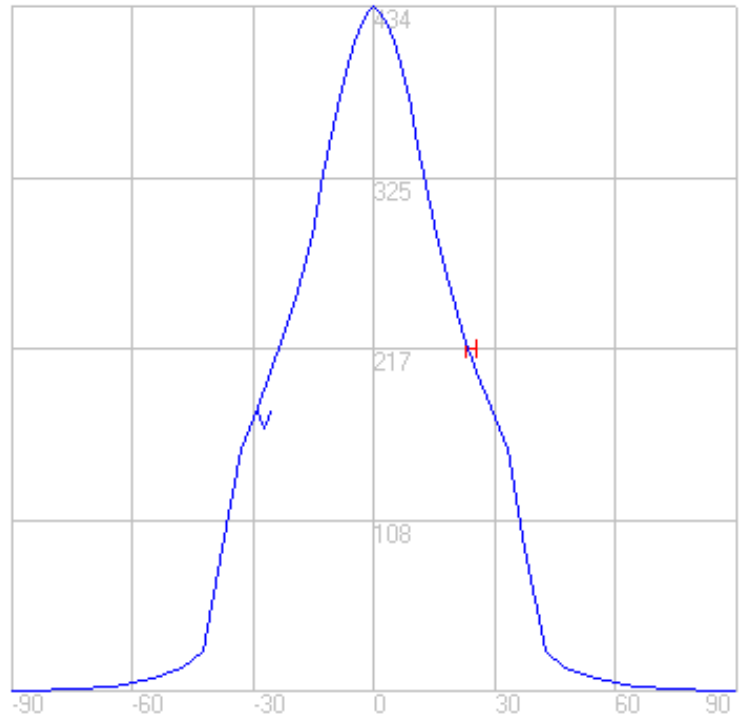
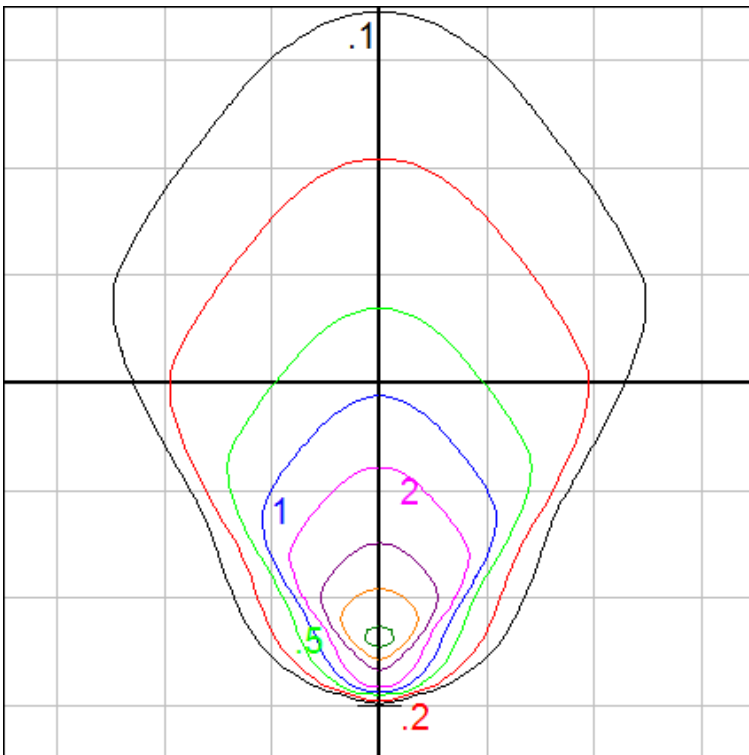


## Characteristics

NEMA Type	5 H x 5 V
Maximum Candela	433.7
Maximum Candela Angle	0 H 0 V
Horizontal Beam Angle (50%)	47.2
Vertical Beam Angle (50%)	47.2
Horizontal Field Angle (10%)	82.3
Vertical Field Angle (10%)	82.3
Lumens Per Lamp	N.A. (absolute)
Total Lamp Lumens	N.A. (absolute)
Beam Lumens	151
Beam Efficiency	N.A.
Field Lumens	294
Field Efficiency	N.A.
Spill Lumens	26
Luminaire Lumens	320
Total Efficiency	N.A.
Total Luminaire Watts	4.5

## Zonal Lumen Summary

Zone	Lumens
0-10	0.00
10-20	0.00
20-30	0.00
30-40	0.00
40-50	0.00
50-60	0.00
60-70	0.00
70-80	0.00
80-90	0.00
90-100	0.04
100-110	0.85
110-120	3.25
120-130	7.20
130-140	17.07
140-150	75.60
150-160	95.03
160-170	82.82
170-180	37.62



In-Grade - Isofootcandle grid on wall  
 Setback = 1 ft. Grid Spacing = 2.5 ft.

In the interest of product improvement, BEGA reserves the right to make technical changes without notice.