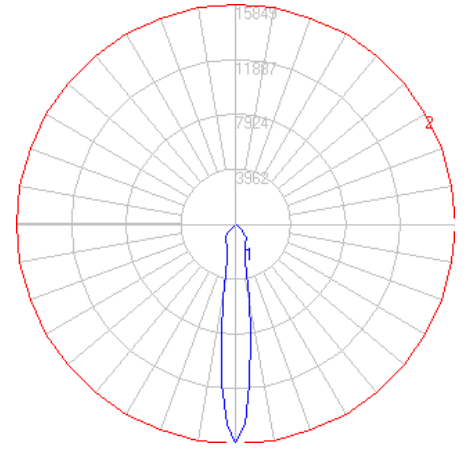


BEGA

Photometric Filename: 66983K3.IES

TEST: BE_66983
 TEST LAB: BEGA
 DATE: 02/04/2015
 LUMINAIRE: 66 983
 LAMP: 35.7W LED

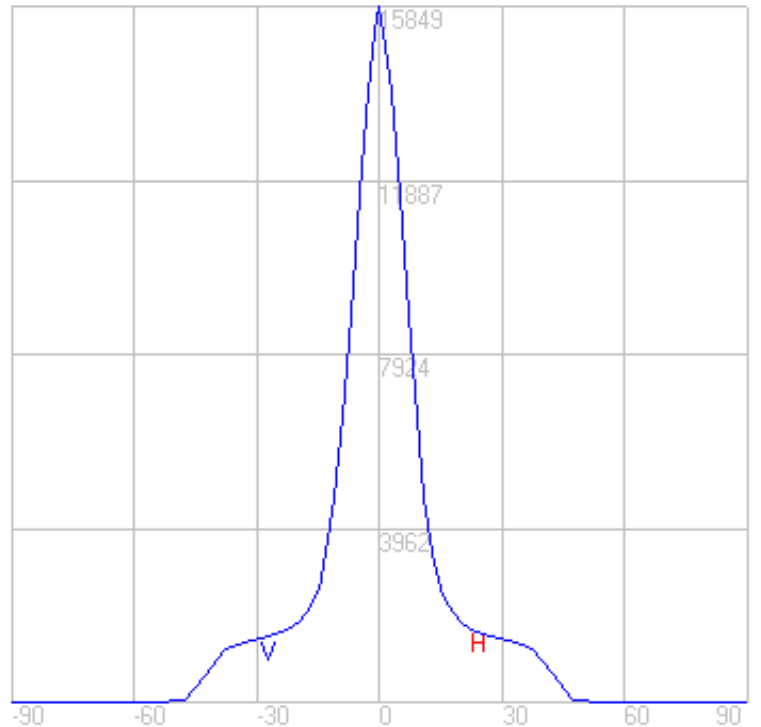
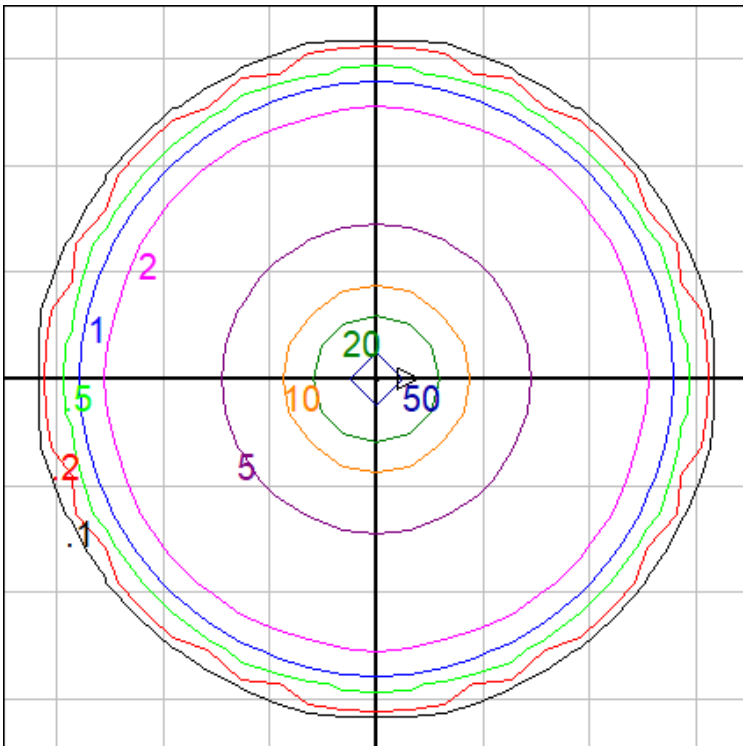


Characteristics

Lumens Per Lamp	N.A. (absolute)
Total Lamp Lumens	N.A. (absolute)
Luminaire Lumens	3499
Total Luminaire Efficiency	N.A.
Luminaire Efficacy Rating (LER)	90
Total Luminaire Watts	39
Ballast Factor	1.00
CIE Type	Direct
Spacing Criterion (0-180)	0.28
Spacing Criterion (90-270)	0.28
Spacing Criterion (Diagonal)	0.30
Basic Luminous Shape	Circular
Luminous Length (0-180)	0.00 m
Luminous Width (90-270)	0.59 m (Diameter)
Luminous Height	0.00 m

Zonal Lumen Summary

Zone	Lumens
0-10	901.32
10-20	796.53
20-30	725.43
30-40	807.73
40-50	246.84
50-60	10.91
60-70	4.32
70-80	4.89
80-90	0.54
90-100	0.00
100-110	0.00
110-120	0.00
120-130	0.00
130-140	0.00
140-150	0.00
150-160	0.00
160-170	0.00



Mounting Height = 15 ft. Grid Spacing = 5 ft.

In the interest of product improvement, BEGA reserves the right to make technical changes without notice.