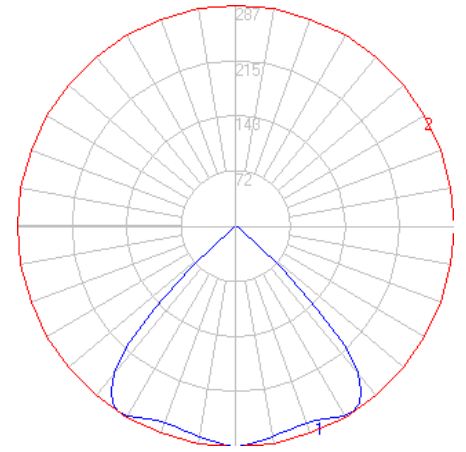


# BEGA

Photometric Filename: 66977.ies

TEST: BE\_66977  
 TEST LAB: BEGA  
 DATE: 6/6/2017  
 LUMINAIRE: 66 977  
 LAMP: 4.9W LED

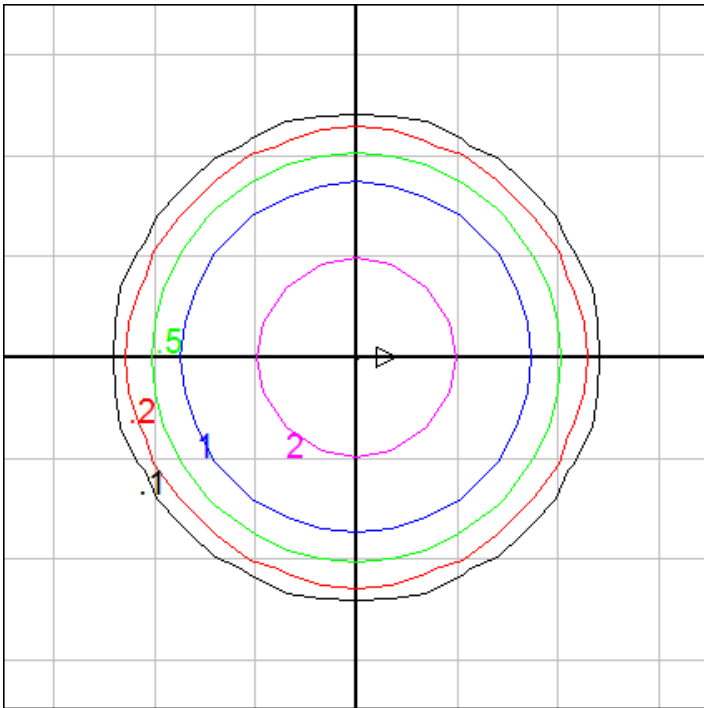


**Characteristics**

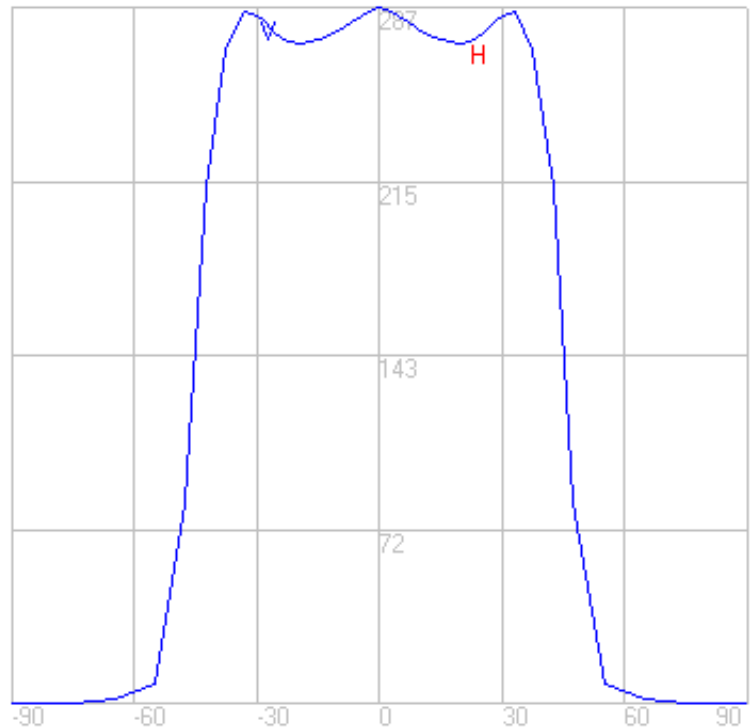
NEMA Type	6 H x 6 V
Maximum Candela	286.7
Maximum Candela Angle	0 H 0 V
Horizontal Beam Angle (50%)	90.3
Vertical Beam Angle (50%)	90.3
Horizontal Field Angle (10%)	105.8
Vertical Field Angle (10%)	105.8
Lumens Per Lamp	N.A. (absolute)
Total Lamp Lumens	N.A. (absolute)
Beam Lumens	475
Beam Efficiency	N.A.
Field Lumens	523
Field Efficiency	N.A.
Spill Lumens	9
Luminaire Lumens	532
Total Efficiency	N.A.
Total Luminaire Watts	7
Ballast Factor	1.00

**Zonal Lumen Summary**

Zone	Lumens
0-10	26.85
10-20	77.65
20-30	128.29
30-40	173.22
40-50	111.40
50-60	9.79
60-70	1.82
70-80	0.39
80-90	0.00
90-100	0.00
100-110	0.00
110-120	0.00
120-130	0.00
130-140	0.00
140-150	0.00
150-160	0.00
160-170	0.00
170-180	0.00



Mounting Height = 10 ft. Grid Spacing = 5 ft.



In the interest of product improvement, BEGA reserves the right to make technical changes without notice.