

Application

Wall mount luminaire with asymmetric light distribution designed for the illumination of parking areas and roadways.

Materials

- Clear safety glass
- Marine grade, copper free ($\leq 0.3\%$ copper content) A360.0 aluminum alloy
- Silicone applied robotically to casting, plasma treated for increased adhesion
- High temperature silicone gasket
- Mechanically captive stainless steel fasteners
- Galvanized zinc-plated mounting bracket
- Pure anodized aluminum reflector

NRTL listed to North American Standards, suitable for wet locations
Protection class IP 66

Weight: 17.2 lbs.

Electrical

Operating voltage	120-277V AC
Minimum start temperature	-40° C
LED module wattage	92.4 W
System wattage	106.0 W
Controllability	0-10V dimmable
Color rendering index	Ra > 80
Luminaire lumens	9454 lm
LED service life (L70)	60000 hrs

LED color temperature

- 4000K (K4)
- 3500K (K35)
- 3000K (K3)
- 2700K (K27)

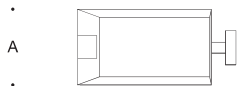
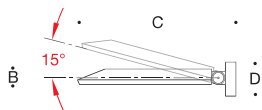
BEGA can supply you with suitable LED replacement modules for up to 20 years after the purchase of LED luminaires - see website for details

Finish

All BEGA standard finishes are matte, textured powder coat with minimum 3 mil thickness. BEGA Unidure® finish, a fluoropolymer technology, provides superior fade protection in Black, Bronze, and Silver. BEGA standard White is a super durable polyester powder. Optionally available RAL and custom color finishes provided in either polyester powder or liquid paint.

Available colors

Black (BLK)	Bronze (BRZ)
Silver (SLV)	White (WHT)
RAL:	CUS:



Area/roadway wall luminaire · Asymmetric

	LED	A	B	C	D
B66452	92.4 W	13 ³ / ₈	3	24	5 ⁵ / ₈

Type:

BEGA Product:

Project:

Modified:

Available options

347V	347V input
CUS	Custom finish
FSC	Fusing
MGU	Marine grade undercoat
RAL	RAL finish

