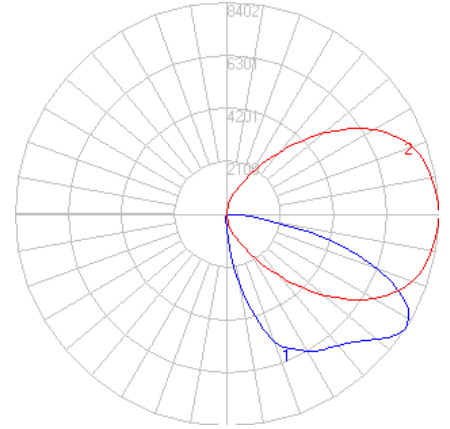
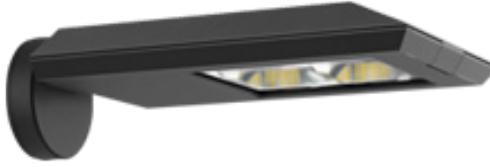


BEGA

Photometric Filename: 66452.ies

TEST: BE_99523
 TEST LAB: BEGA
 DATE: 6/10/2015
 LUMINAIRE: 66 452
 LAMP: 92.4W LED



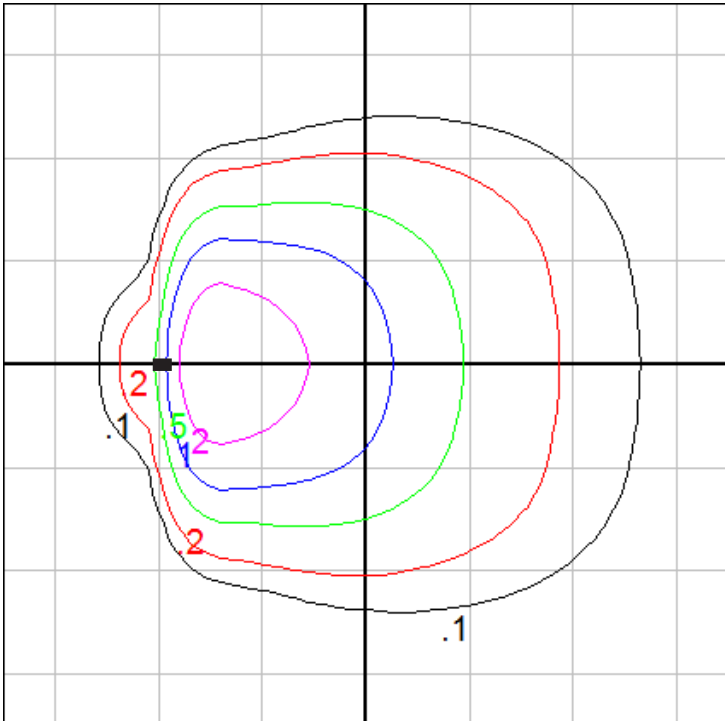
Characteristics

IES Classification	Type IV
Longitudinal Classification	Very Short
Lumens Per Lamp	N.A. (absolute)
Total Lamp Lumens	N.A. (absolute)
Luminaire Lumens	9454
Downward Total Efficiency	N.A.
Total Luminaire Efficiency	N.A.
Luminaire Efficacy Rating (LER)	89
Total Luminaire Watts	106
Ballast Factor	1.00
Upward Waste Light Ratio	0.00
Max. Cd.	8401.9 (360H, 57.5V)
Max. Cd. (<90 Vert.)	8401.9 (360H, 57.5V)
Max. Cd. (At 90 Deg. Vert.)	0 (0.0%Lum)
Max. Cd. (80 to <90 Deg. Vert.)	2177.9 (23.0%Lum)
Cutoff Classification (deprecated)	N.A. (absolute)

Lum. Classification System (LCS)

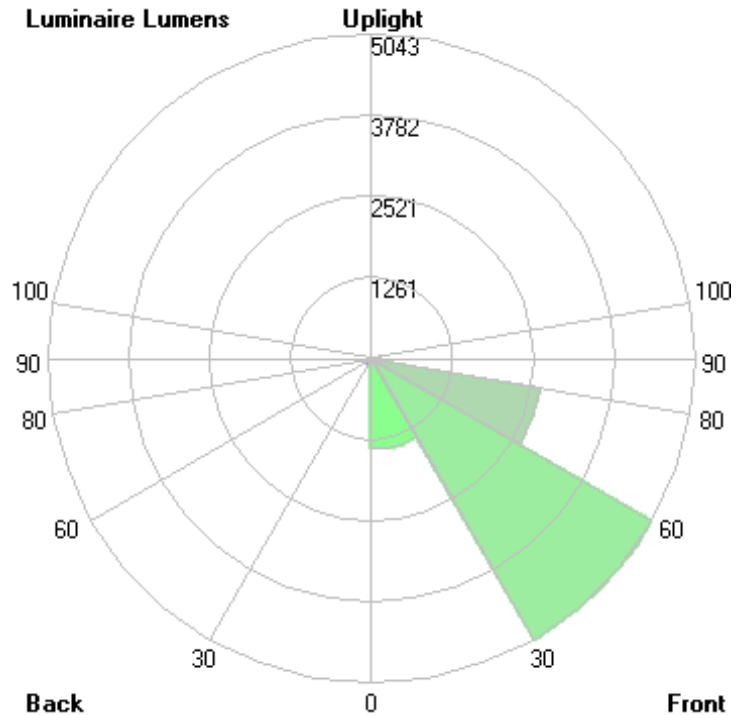
LCS Zone	Lumens	%Lamp	%Lum
FL (0-30)	1407.4	N.A.	14.9
FM (30-60)	5042.7	N.A.	53.3
FH (60-80)	2666.0	N.A.	28.2
FVH (80-90)	149.0	N.A.	1.6
BL (0-30)	115.3	N.A.	1.2
BM (30-60)	63.6	N.A.	0.7
BH (60-80)	8.8	N.A.	0.1
BVH (80-90)	1.2	N.A.	0.0
UL (90-100)	0.0	N.A.	0.0
UH (100-180)	0.0	N.A.	0.0
Total	9454.0	N.A.	100.0

BUG Rating B1-U0-G2



Mounting Height = 35 ft.

Grid Spacing = 25 ft.



In the interest of product improvement, BEGA reserves the right to make technical changes without notice.