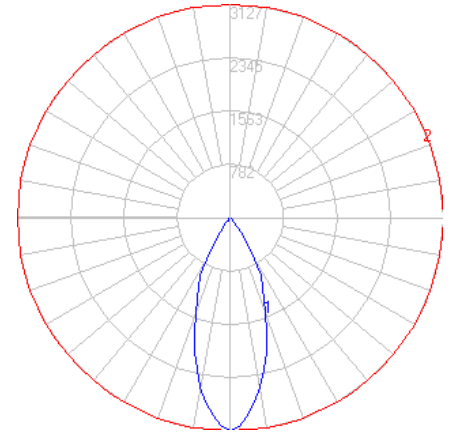


BEGA

Photometric Filename: 66159.IES

TEST: BE_66159
 TEST LAB: BEGA
 DATE: 10/20/2015
 LUMINAIRE: 66 159
 LAMP: 17.8W LED

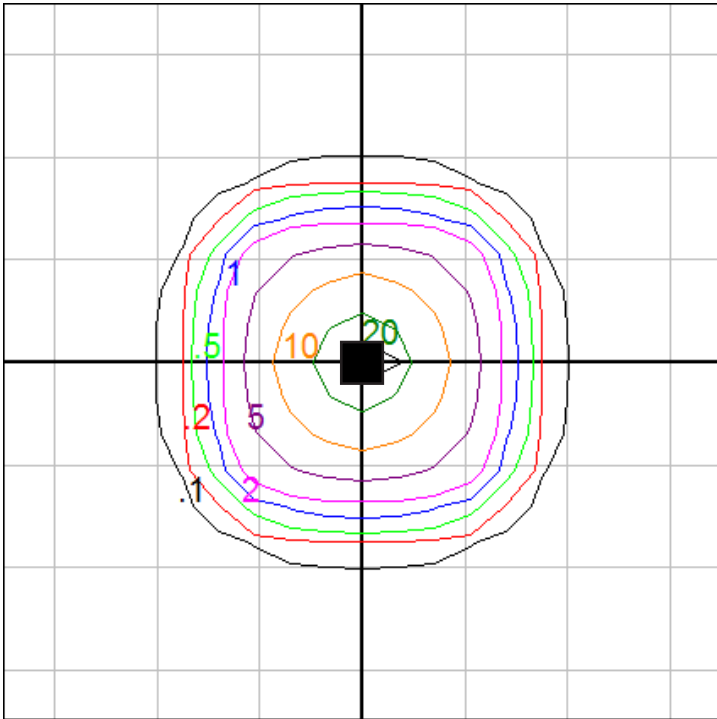


Characteristics

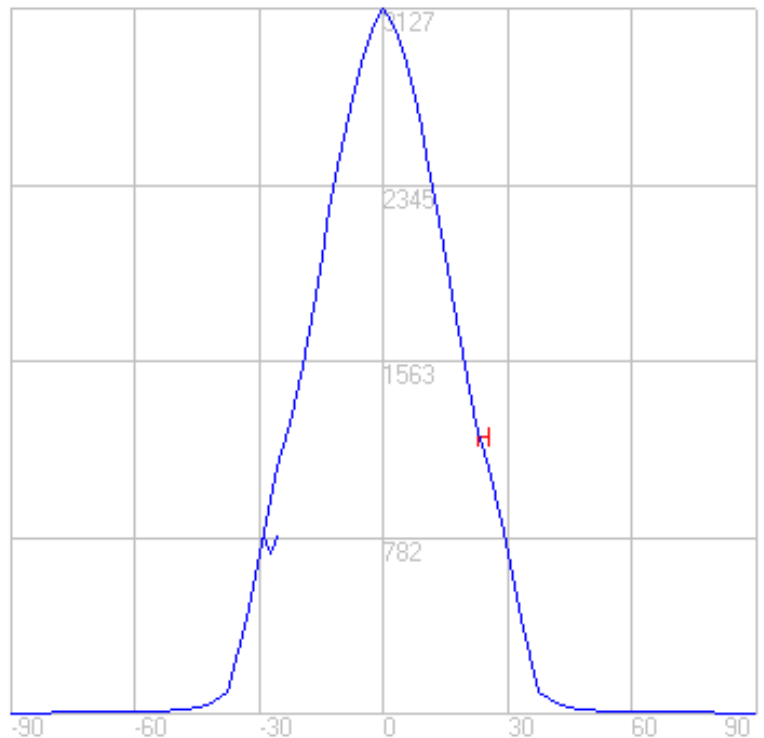
NEMA Type	4 H x 4 V
Maximum Candela	3126.8
Maximum Candela Angle	0 H 0 V
Horizontal Beam Angle (50%)	38.6
Vertical Beam Angle (50%)	38.6
Horizontal Field Angle (10%)	69.1
Vertical Field Angle (10%)	69.1
Lumens Per Lamp	N.A. (absolute)
Total Lamp Lumens	N.A. (absolute)
Beam Lumens	788
Beam Efficiency	N.A.
Field Lumens	1558
Field Efficiency	N.A.
Spill Lumens	116
Luminaire Lumens	1674
Total Efficiency	N.A.
Total Luminaire Watts	20

Zonal Lumen Summary

Zone	Lumens
0-10	266.46
10-20	553.47
20-30	529.23
30-40	269.75
40-50	33.68
50-60	10.32
60-70	5.68
70-80	2.58
80-90	0.26
90-100	0.00
100-110	0.00
110-120	0.00
120-130	0.00
130-140	0.00
140-150	0.00
150-160	0.00
160-170	0.00
170-180	0.00



Mounting Height = 10 ft. Grid Spacing = 5 ft.



In the interest of product improvement, BEGA reserves the right to make technical changes without notice.