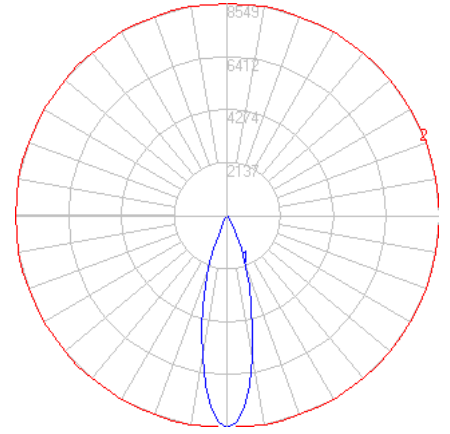


BEGA

Photometric Filename: 66156.IES

TEST: BE_66156
 TEST LAB: BEGA
 DATE: 10/21/2015
 LUMINAIRE: 66 156
 LAMP: 33.6W LED

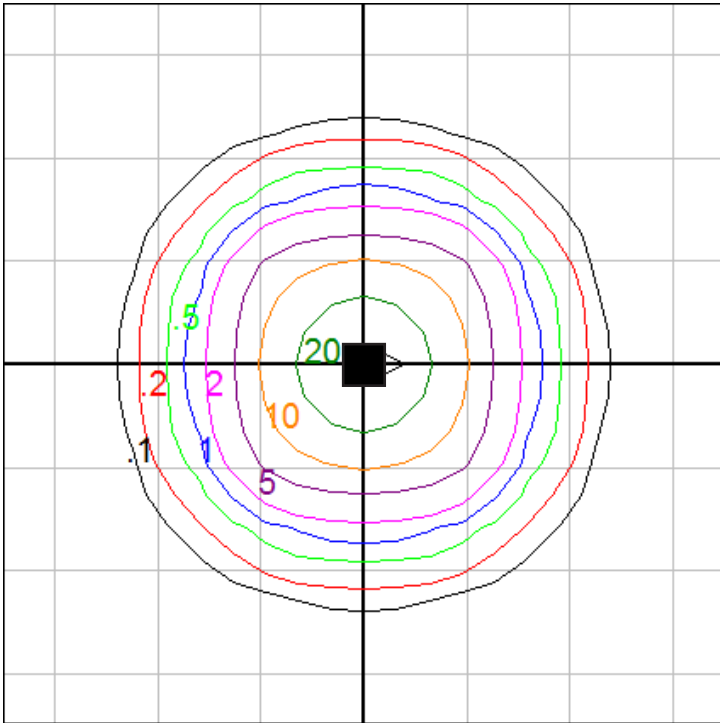


Characteristics

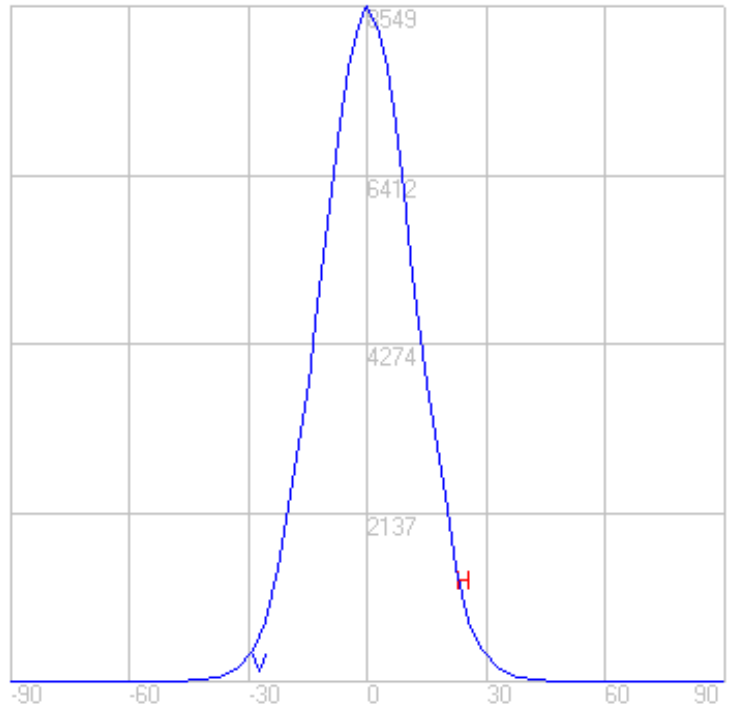
Lumens Per Lamp	N.A. (absolute)
Total Lamp Lumens	N.A. (absolute)
Luminaire Lumens	2391
Total Luminaire Efficiency	N.A.
Luminaire Efficacy Rating (LER)	60
Total Luminaire Watts	40
Ballast Factor	1.00
CIE Type	Direct
Spacing Criterion (0-180)	0.46
Spacing Criterion (90-270)	0.46
Spacing Criterion (Diagonal)	0.52
Basic Luminous Shape	Rectangular
Luminous Length (0-180)	0.48 ft
Luminous Width (90-270)	0.48 ft
Luminous Height	0.00 ft

Characteristics

NEMA Type	4 H x 4 V
Maximum Candela	8548.9
Maximum Candela Angle	0 H 0 V
Horizontal Beam Angle (50%)	27.4
Vertical Beam Angle (50%)	27.4
Horizontal Field Angle (10%)	50.3
Vertical Field Angle (10%)	50.3
Lumens Per Lamp	N.A. (absolute)
Total Lamp Lumens	N.A. (absolute)
Beam Lumens	1077
Beam Efficiency	N.A.
Field Lumens	2179
Field Efficiency	N.A.
Spill Lumens	212
Luminaire Lumens	2392
Total Efficiency	N.A.
Total Luminaire Watts	40



Mounting Height = 15 ft. Grid Spacing = 5 ft.



In the interest of product improvement, BEGA reserves the right to make technical changes without notice.