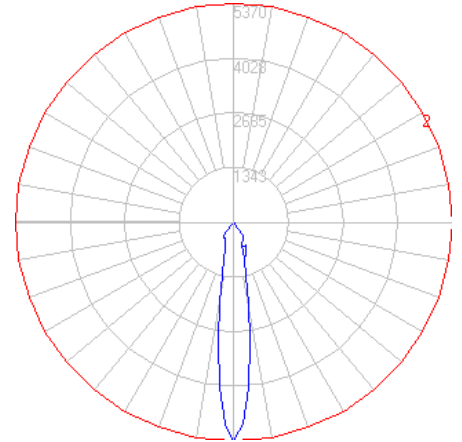


# BEGA

Photometric Filename: 55925.IES

TEST: BE\_55925  
 TEST LAB: BEGA  
 DATE: 10/26/2017  
 LUMINAIRE: 55 925  
 LAMP: 12.7W LED

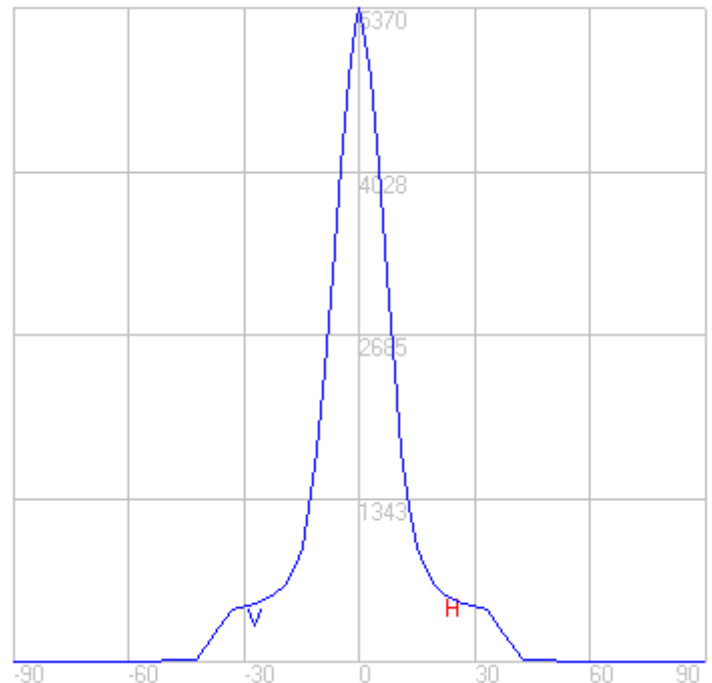
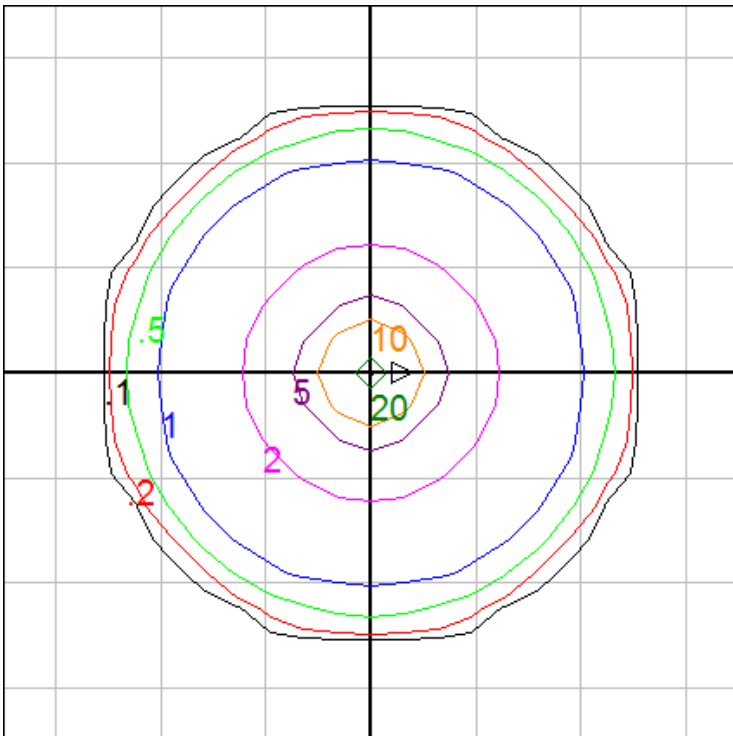


### Characteristics

Lumens Per Lamp	N.A. (absolute)
Total Lamp Lumens	N.A. (absolute)
Luminaire Lumens	1076
Total Luminaire Efficiency	N.A.
Luminaire Efficacy Rating (LER)	69
Total Luminaire Watts	15.5
Ballast Factor	1.00
CIE Type	Direct
Spacing Criterion (0-180)	0.30
Spacing Criterion (90-270)	0.30
Spacing Criterion (Diagonal)	0.32
Basic Luminous Shape	Circular
Luminous Length (0-180)	0.00 ft
Luminous Width (90-270)	0.33 ft (Diameter)
Luminous Height	0.00 ft

### Zonal Lumen Summary

Zone	Lumens
0-10	320.71
10-20	286.72
20-30	236.72
30-40	205.57
40-50	17.65
50-60	6.50
60-70	1.63
70-80	0.85
80-90	0.00
90-100	0.00
100-110	0.00
110-120	0.00
120-130	0.00
130-140	0.00
140-150	0.00
150-160	0.00
160-170	0.00
170-180	0.00



Mounting Height = 15 ft. Grid Spacing = 5 ft.

In the interest of product improvement, BEGA reserves the right to make technical changes without notice.