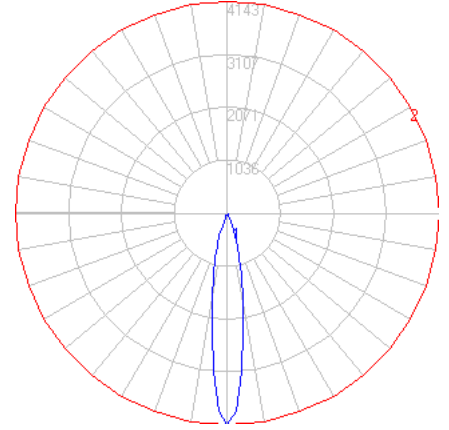


BEGA

Photometric Filename: 55842.IES

TEST: BE_55842
 TEST LAB: BEGA
 DATE: 2/14/2017
 LUMINAIRE: 55 842
 LAMP: 5.7W LED

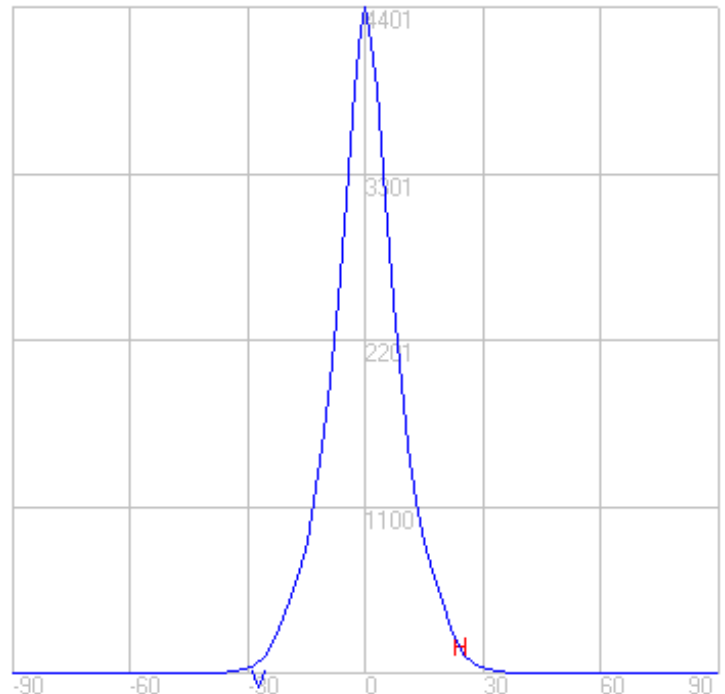
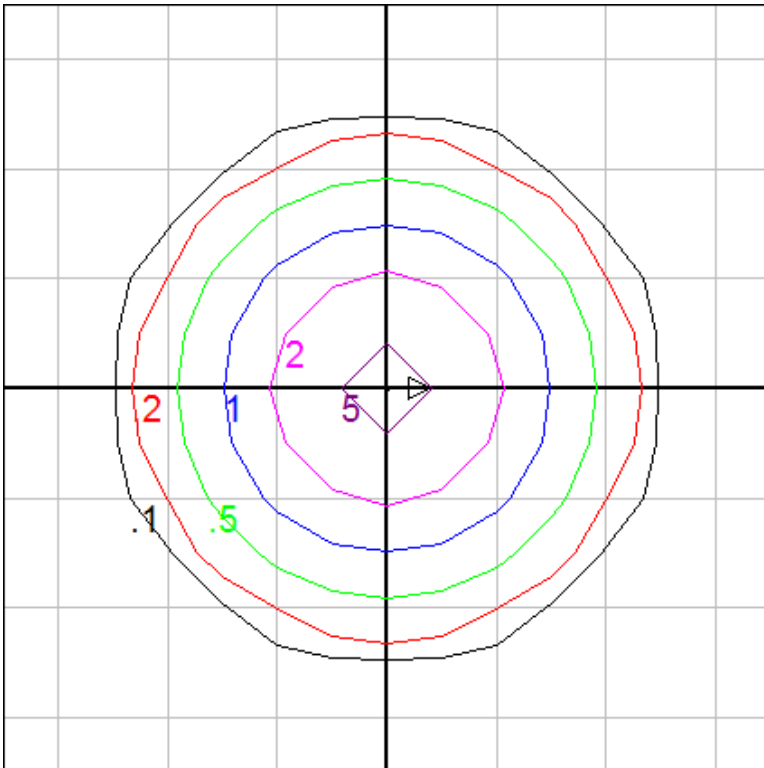


Characteristics

Lumens Per Lamp	N.A. (absolute)
Total Lamp Lumens	N.A. (absolute)
Luminaire Lumens	583
Total Luminaire Efficiency	N.A.
Luminaire Efficacy Rating (LER)	83
Total Luminaire Watts	7
Ballast Factor	1.00
CIE Type	Direct
Spacing Criterion (0-180)	0.28
Spacing Criterion (90-270)	0.28
Spacing Criterion (Diagonal)	0.32
Basic Luminous Shape	Circular
Luminous Length (0-180)	0.00 ft
Luminous Width (90-270)	0.23 ft (Diameter)
Luminous Height	0.00 ft

Zonal Lumen Summary

Zone	Lumens
0-10	253.66
10-20	248.87
20-30	71.78
30-40	7.27
40-50	1.26
50-60	0.20
60-70	0.09
70-80	0.00
80-90	0.00
90-100	0.00
100-110	0.00
110-120	0.00
120-130	0.00
130-140	0.00
140-150	0.00
150-160	0.00
160-170	0.00
170-180	0.00



Mounting Height = 25 ft. Grid Spacing = 5 ft.

In the interest of product improvement, BEGA reserves the right to make technical changes without notice.

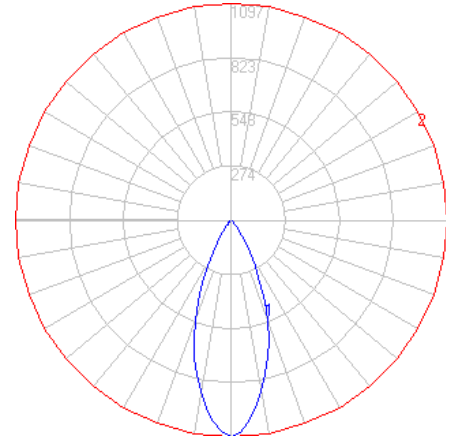
BEGA 1000 Bega Way, Carpinteria, CA 93013 (805)684-0533 Fax (805)566-9474 www.bega-us.com © Copyright BEGA-US 2017

12/14/2017

BEGA

Photometric Filename: 55842_10043.IES

TEST: BE_55842_10043
 TEST LAB: BEGA
 DATE: 2/14/2017
 LUMINAIRE: 55 842 + 10 043
 LAMP: 5.7W LED

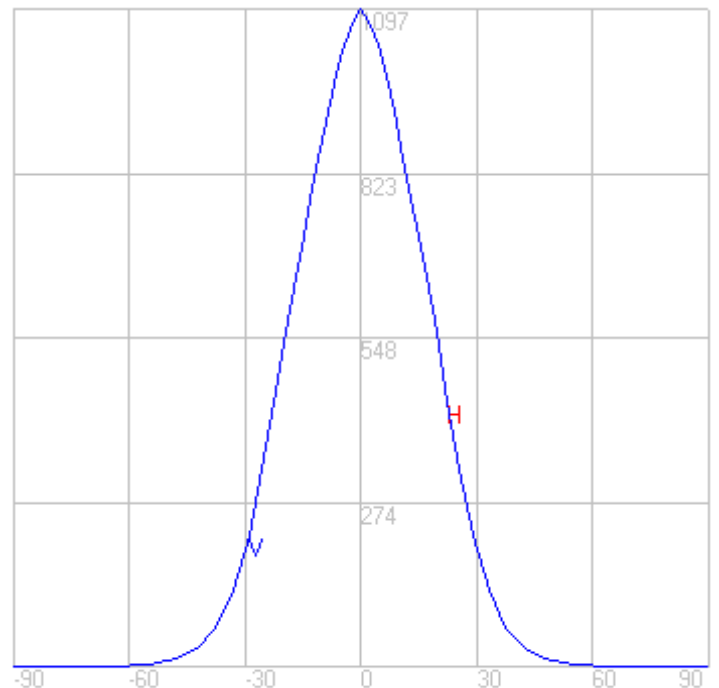
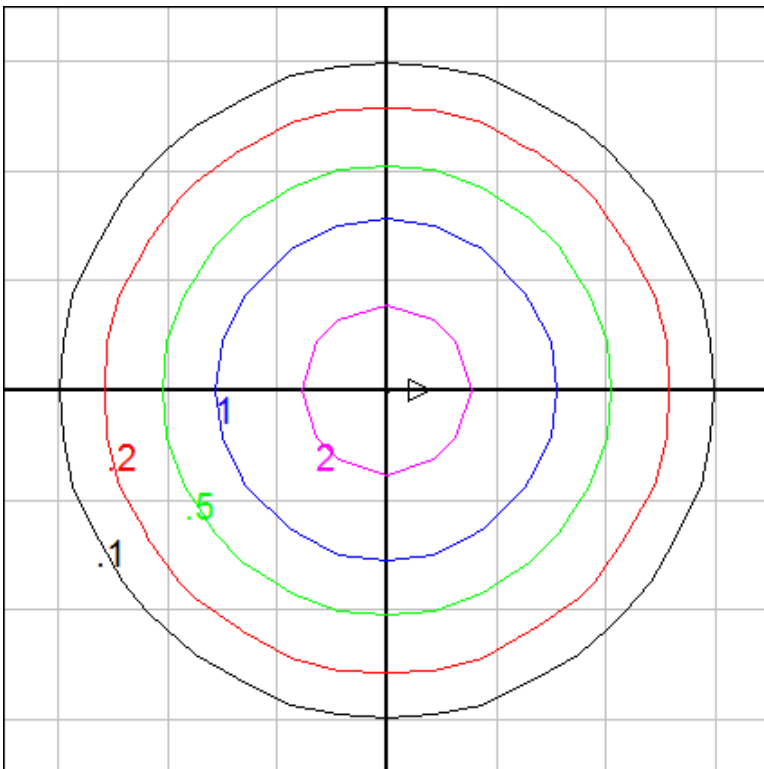


Characteristics

Lumens Per Lamp	N.A. (absolute)
Total Lamp Lumens	N.A. (absolute)
Luminaire Lumens	536
Total Luminaire Efficiency	N.A.
Luminaire Efficacy Rating (LER)	77
Total Luminaire Watts	7
Ballast Factor	1.00
CIE Type	Direct
Spacing Criterion (0-180)	0.64
Spacing Criterion (90-270)	0.64
Spacing Criterion (Diagonal)	0.66
Basic Luminous Shape	Circular
Luminous Length (0-180)	0.00 ft
Luminous Width (90-270)	0.23 ft (Diameter)
Luminous Height	0.00 ft

Zonal Lumen Summary

Zone	Lumens
0-10	93.29
10-20	197.87
20-30	158.73
30-40	63.07
40-50	16.32
50-60	4.51
60-70	1.55
70-80	0.20
80-90	0.07
90-100	0.00
100-110	0.00
110-120	0.00
120-130	0.00
130-140	0.00
140-150	0.00
150-160	0.00
160-170	0.00
170-180	0.00



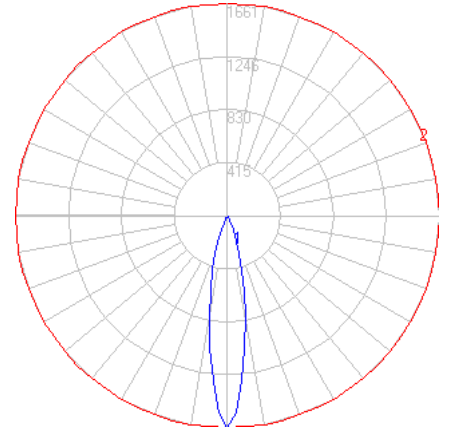
Mounting Height = 20 ft. Grid Spacing = 5 ft.

In the interest of product improvement, BEGA reserves the right to make technical changes without notice.

BEGA

Photometric Filename: 55842_10014.IES

TEST: BE_55842_10014
 TEST LAB: BEGA
 DATE: 2/14/2017
 LUMINAIRE: 55 842 + 10 014
 LAMP: 5.7W LED

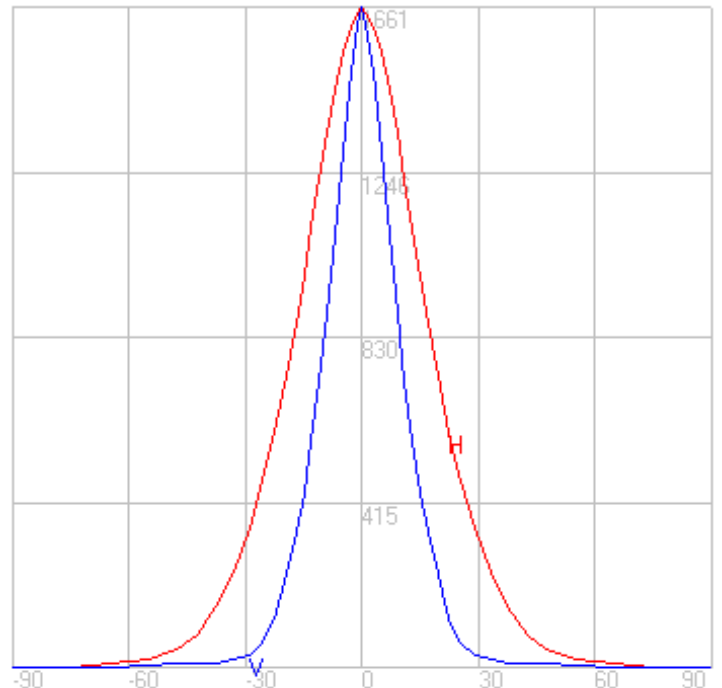
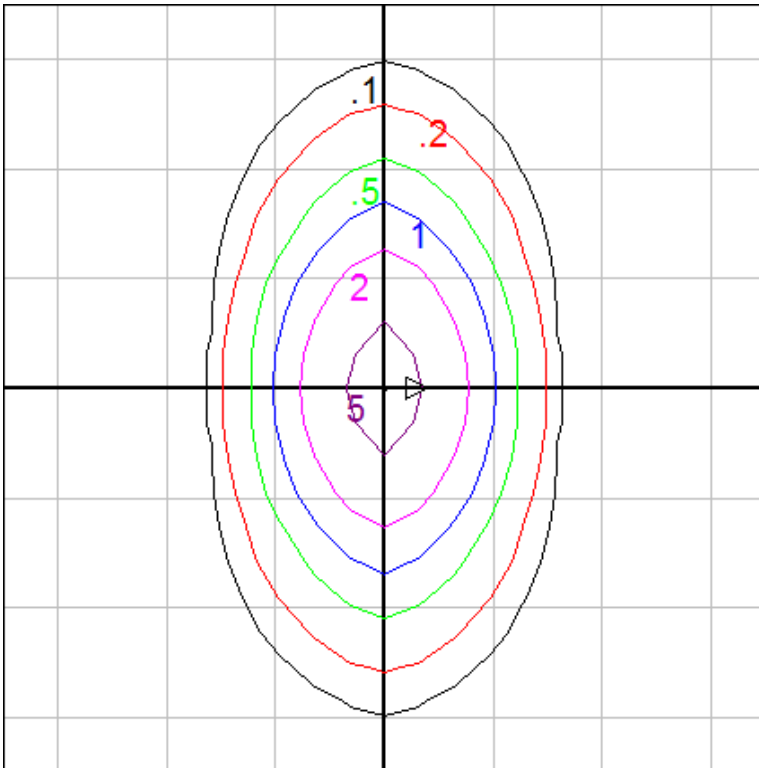


Characteristics

Lumens Per Lamp	N.A. (absolute)
Total Lamp Lumens	N.A. (absolute)
Luminaire Lumens	473
Total Luminaire Efficiency	N.A.
Luminaire Efficacy Rating (LER)	68
Total Luminaire Watts	7
Ballast Factor	1.00
CIE Type	Direct
Spacing Criterion (0-180)	0.34
Spacing Criterion (90-270)	0.58
Spacing Criterion (Diagonal)	0.44
Basic Luminous Shape	Circular
Luminous Length (0-180)	0.00 ft
Luminous Width (90-270)	0.23 ft (Diameter)
Luminous Height	0.00 ft

Zonal Lumen Summary

Zone	Lumens
0-10	122.09
10-20	180.05
20-30	102.39
30-40	42.40
40-50	16.36
50-60	6.96
60-70	2.74
70-80	0.38
80-90	0.06
90-100	0.00
100-110	0.00
110-120	0.00
120-130	0.00
130-140	0.00
140-150	0.00
150-160	0.00
160-170	0.00
170-180	0.00



Mounting Height = 15 ft. Grid Spacing = 5 ft.

In the interest of product improvement, BEGA reserves the right to make technical changes without notice.