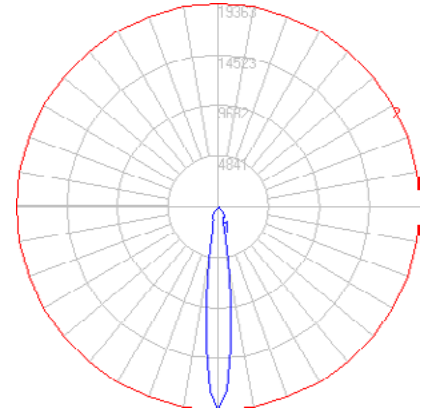


BEGA

Photometric Filename: 55829K3.IES

TEST: BE_55829
 TEST LAB: BEGA
 DATE: 7/23/2014
 LUMINAIRE: 55 829
 LAMP: 35.7W LED

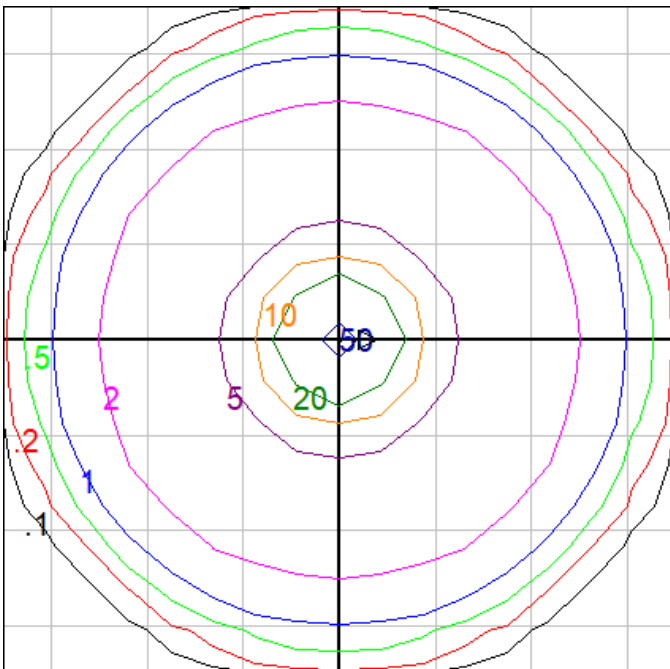


Characteristics

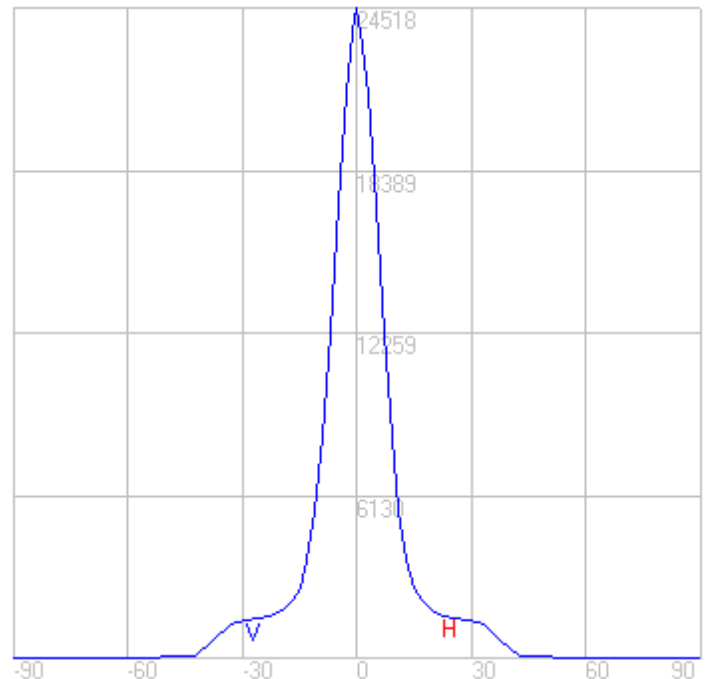
Lumens Per Lamp	N.A. (absolute)
Total Lamp Lumens	N.A. (absolute)
Luminaire Lumens	3530
Total Luminaire Efficiency	N.A.
Luminaire Efficacy Rating (LER)	84
Total Luminaire Watts	42
Ballast Factor	1.00
CIE Type	Direct
Spacing Criterion (0-180)	0.26
Spacing Criterion (90-270)	0.26
Spacing Criterion (Diagonal)	0.26
Basic Luminous Shape	Circular
Luminous Length (0-180)	0.00 ft
Luminous Width (90-270)	0.49 ft (Diameter)
Luminous Height	0.00 ft

Zonal Lumen Summary

Zone	Lumens
0-10	1283.65
10-20	842.36
20-30	694.16
30-40	602.30
40-50	64.59
50-60	28.03
60-70	6.99
70-80	5.02
80-90	3.38
90-100	0.00
100-110	0.00
110-120	0.00
120-130	0.00
130-140	0.00
140-150	0.00
150-160	0.00
160-170	0.00
170-180	0.00



Mounting Height = 20 ft. Grid Spacing = 5 ft.



In the interest of product improvement, BEGA reserves the right to make technical changes without notice.