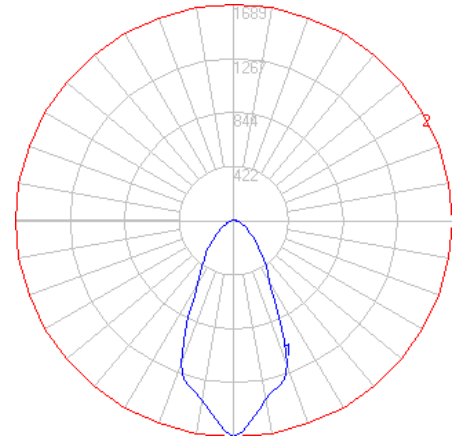


BEGA

Photometric Filename: 50695K4.IES

TEST: BE_50695K4
 TEST LAB: BEGA
 DATE: 12/07/2018
 LUMINAIRE: 50 695K4
 LAMP: 17.2W LED

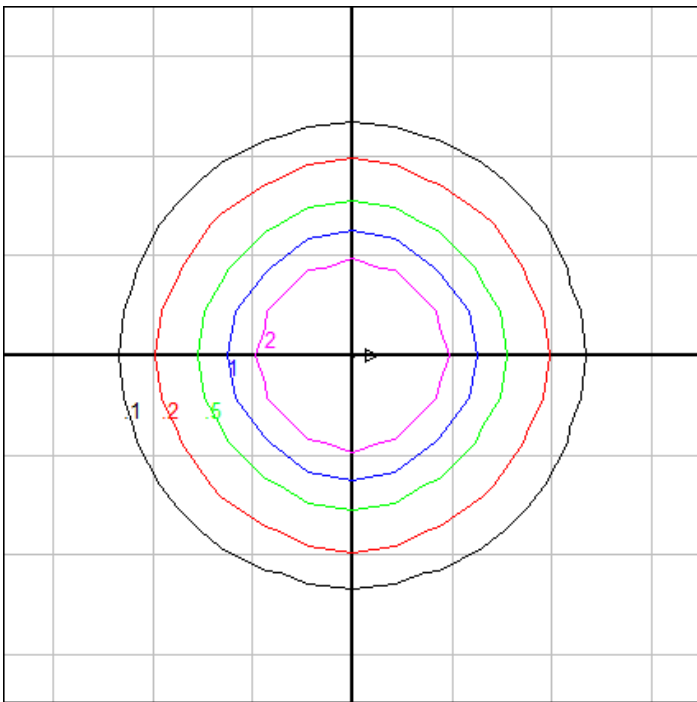


Characteristics

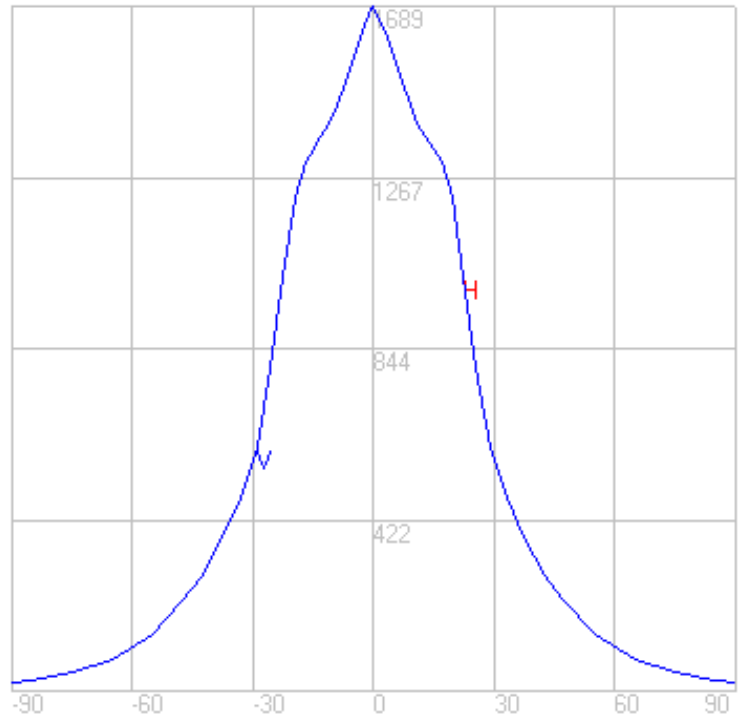
Lumens Per Lamp	N.A. (absolute)
Total Lamp Lumens	N.A. (absolute)
Luminaire Lumens	1727
Total Luminaire Efficiency	N.A.
Luminaire Efficacy Rating (LER)	86
Total Luminaire Watts	21
Ballast Factor	1.00
CIE Type	Direct
Spacing Criterion (0-180)	0.82
Spacing Criterion (90-270)	0.82
Spacing Criterion (Diagonal)	0.78
Basic Luminous Shape	Circular w/ Sides
Luminous Length (0-180)	0.00 ft
Luminous Width (90-270)	0.18 ft (Diameter)
Luminous Height	0.03 ft

Zonal Lumen Summary

Zone	Lumens
0-10	144.87
10-20	374.39
20-30	383.42
30-40	271.60
40-50	195.75
50-60	126.48
60-70	76.68
70-80	49.52
80-90	29.22
90-100	18.50
100-110	19.14
110-120	16.87
120-130	11.25
130-140	6.41
140-150	2.76
150-160	0.05
160-170	0.00
170-180	0.00



Mounting Height = 10 ft. AFF Grid Spacing = 8 ft.

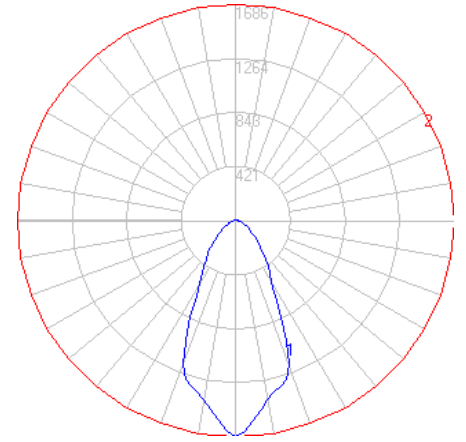


In the interest of product improvement, BEGA reserves the right to make technical changes without notice.

BEGA

Photometric Filename: 50695K35.IES

TEST: BE_50695K4
 TEST LAB: BEGA
 DATE: 12/07/2018
 LUMINAIRE: 50 695K35
 LAMP: 17.2W LED

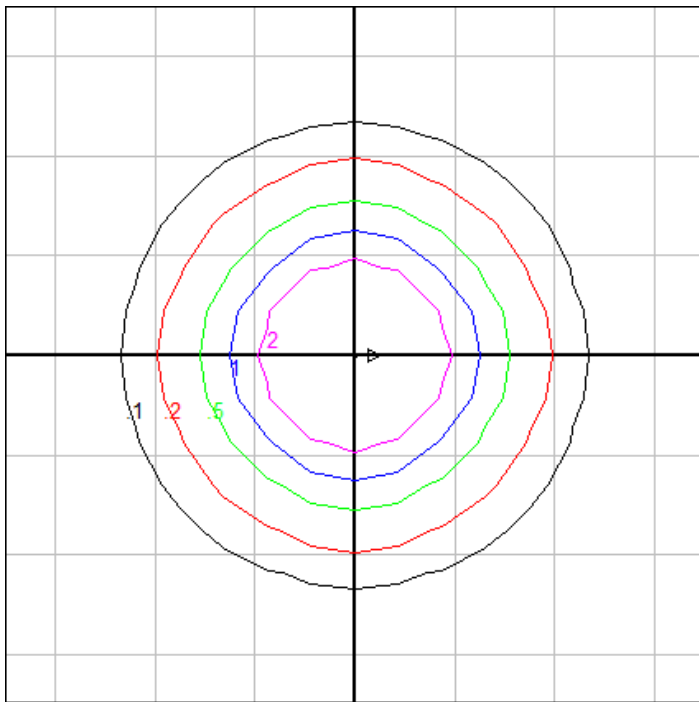


Characteristics

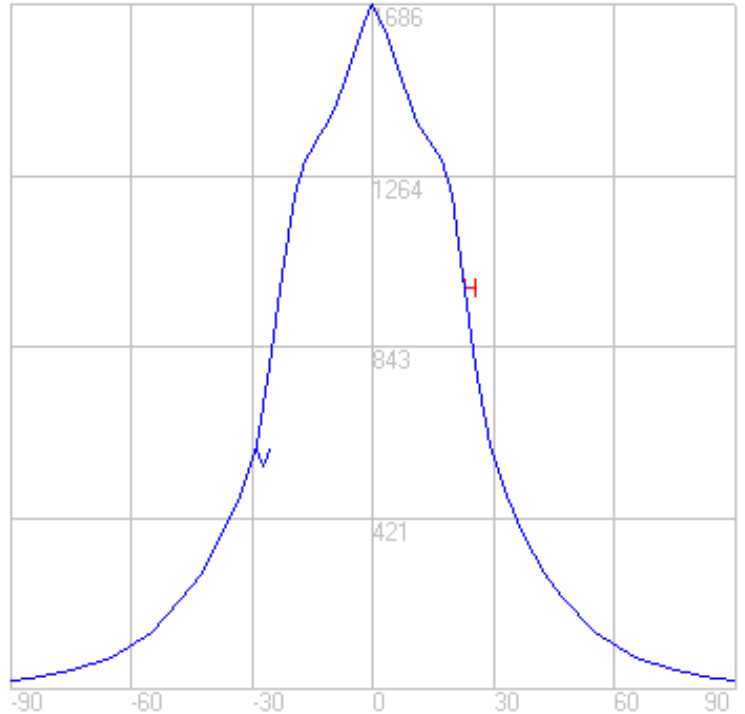
Lumens Per Lamp	N.A. (absolute)
Total Lamp Lumens	N.A. (absolute)
Luminaire Lumens	1723
Total Luminaire Efficiency	N.A.
Luminaire Efficacy Rating (LER)	86
Total Luminaire Watts	21
Ballast Factor	1.00
CIE Type	Direct
Spacing Criterion (0-180)	0.82
Spacing Criterion (90-270)	0.82
Spacing Criterion (Diagonal)	0.78
Basic Luminous Shape	Circular w/ Sides
Luminous Length (0-180)	0.00 ft
Luminous Width (90-270)	0.18 ft (Diameter)
Luminous Height	0.03 ft

Zonal Lumen Summary

Zone	Lumens
0-10	144.58
10-20	373.64
20-30	382.65
30-40	271.05
40-50	195.35
50-60	126.23
60-70	76.53
70-80	49.42
80-90	29.16
90-100	18.46
100-110	19.10
110-120	16.83
120-130	11.23
130-140	6.40
140-150	2.76
150-160	0.05
160-170	0.00
170-180	0.00



Mounting Height = 10 ft. AFF Grid Spacing = 8 ft.

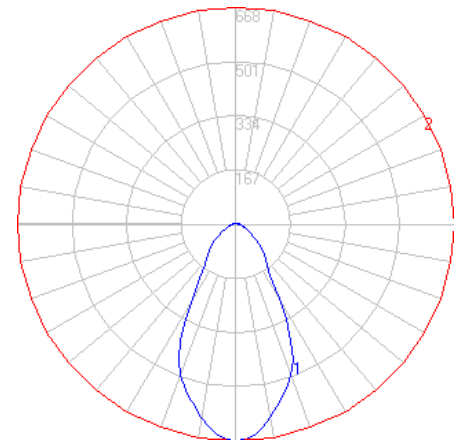


In the interest of product improvement, BEGA reserves the right to make technical changes without notice.

BEGA

Photometric Filename: 50695K3.IES

TEST: BE_50695K4
 TEST LAB: BEGA
 DATE: 12/07/2018
 LUMINAIRE: 50 695K3
 LAMP: 17.2W LED

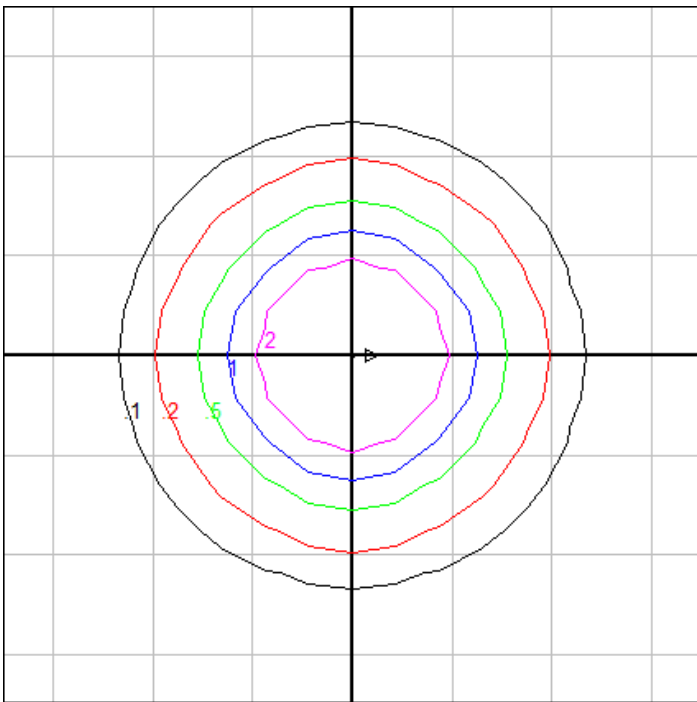


Characteristics

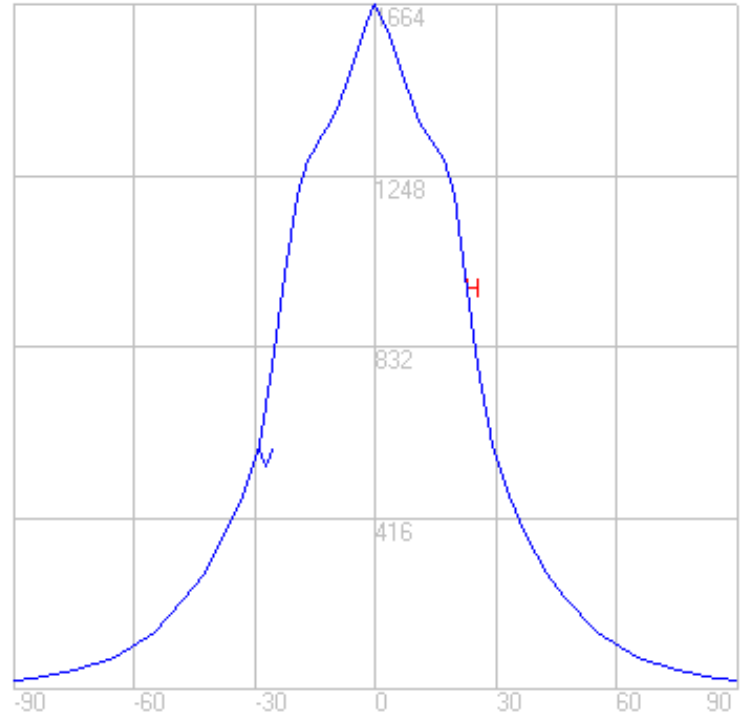
Lumens Per Lamp	N.A. (absolute)
Total Lamp Lumens	N.A. (absolute)
Luminaire Lumens	1701
Total Luminaire Efficiency	N.A.
Luminaire Efficacy Rating (LER)	85
Total Luminaire Watts	21
Ballast Factor	1.00
CIE Type	Direct
Spacing Criterion (0-180)	0.82
Spacing Criterion (90-270)	0.82
Spacing Criterion (Diagonal)	0.78
Basic Luminous Shape	Circular w/ Sides
Luminous Length (0-180)	0.00 ft
Luminous Width (90-270)	0.18 ft (Diameter)
Luminous Height	0.03 ft

Zonal Lumen Summary

Zone	Lumens
0-10	142.70
10-20	368.77
20-30	377.67
30-40	267.52
40-50	192.81
50-60	124.58
60-70	75.53
70-80	48.78
80-90	28.78
90-100	18.22
100-110	18.85
110-120	16.61
120-130	11.08
130-140	6.32
140-150	2.72
150-160	0.05
160-170	0.00
170-180	0.00



Mounting Height = 10 ft. AFF Grid Spacing = 8 ft.

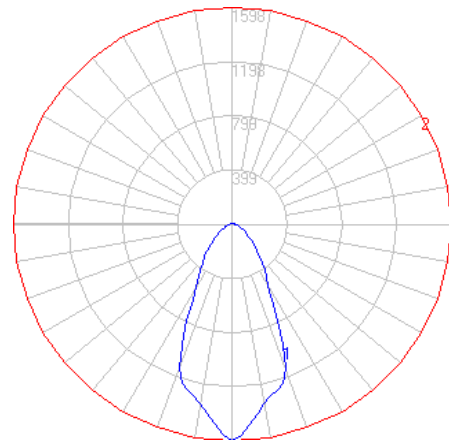


In the interest of product improvement, BEGA reserves the right to make technical changes without notice.

BEGA

Photometric Filename: 50695K27.IES

TEST: BE_50695K4
 TEST LAB: BEGA
 DATE: 12/07/2018
 LUMINAIRE: 50 695K27
 LAMP: 17.2W LED

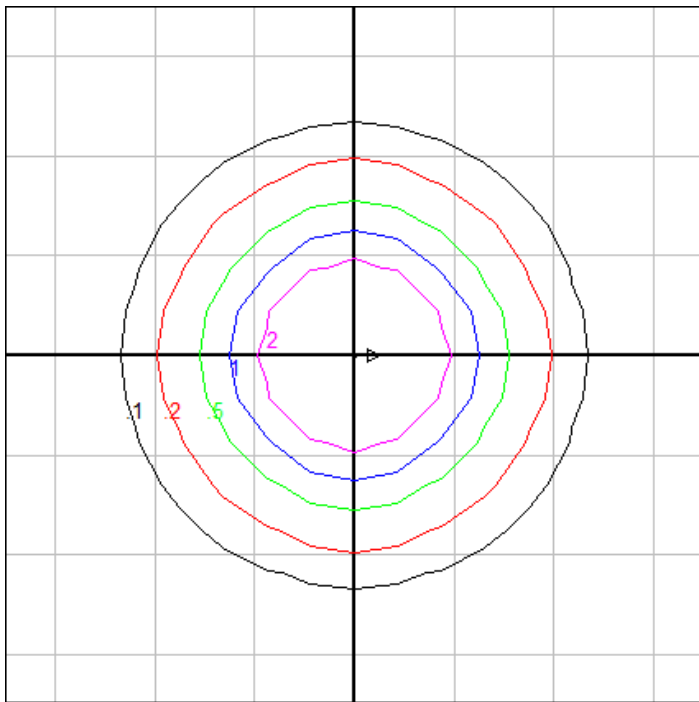


Characteristics

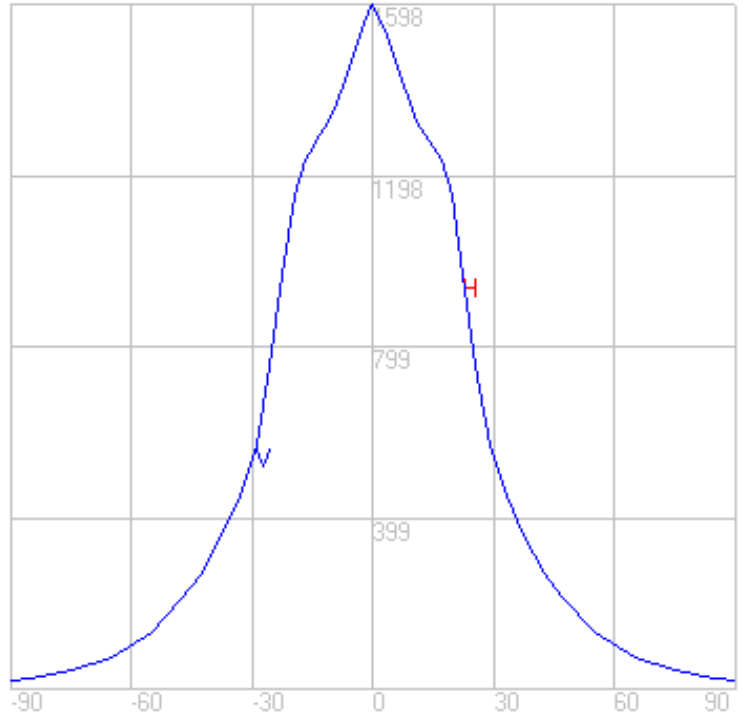
Lumens Per Lamp	N.A. (absolute)
Total Lamp Lumens	N.A. (absolute)
Luminaire Lumens	1634
Total Luminaire Efficiency	N.A.
Luminaire Efficacy Rating (LER)	82
Total Luminaire Watts	21
Ballast Factor	1.00
CIE Type	Direct
Spacing Criterion (0-180)	0.82
Spacing Criterion (90-270)	0.82
Spacing Criterion (Diagonal)	0.78
Basic Luminous Shape	Circular w/ Sides
Luminous Length (0-180)	0.00 ft
Luminous Width (90-270)	0.18 ft (Diameter)
Luminous Height	0.03 ft

Zonal Lumen Summary

Zone	Lumens
0-10	137.05
10-20	354.17
20-30	362.71
30-40	256.93
40-50	185.18
50-60	119.65
60-70	72.54
70-80	46.84
80-90	27.64
90-100	17.50
100-110	18.10
110-120	15.96
120-130	10.65
130-140	6.07
140-150	2.61
150-160	0.04
160-170	0.00
170-180	0.00



Mounting Height = 10 ft. AFF Grid Spacing = 8 ft.



In the interest of product improvement, BEGA reserves the right to make technical changes without notice.