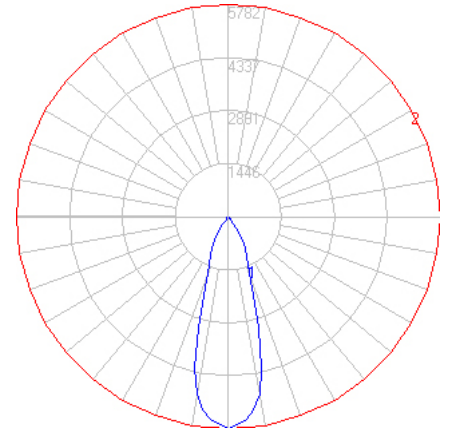


BEGA

File: 50631K4_BEGA_IES.ies

TEST: BE_50631K4
 TEST LAB: BEGA
 DATE: 09/28/2017
 LUMINAIRE: 50 631K4
 LAMP: 17.0W LED

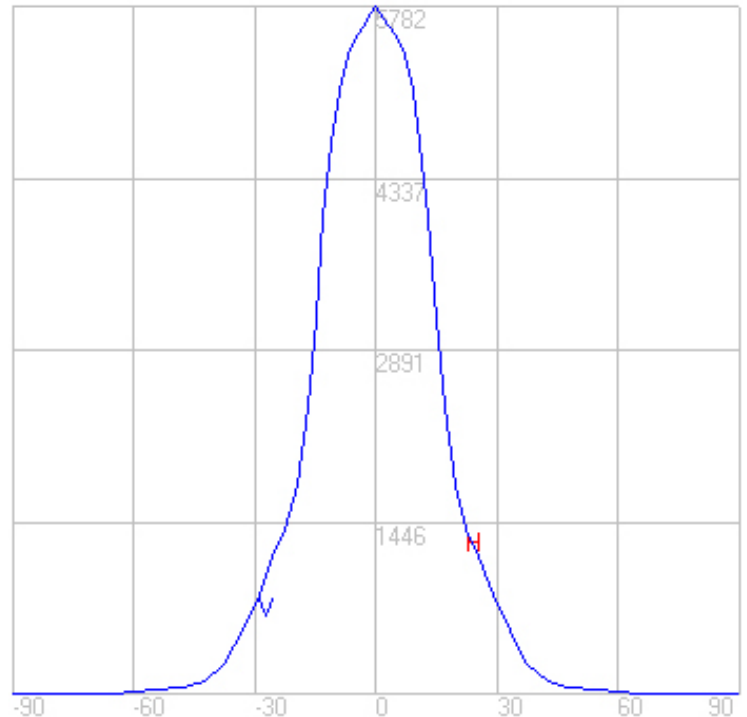
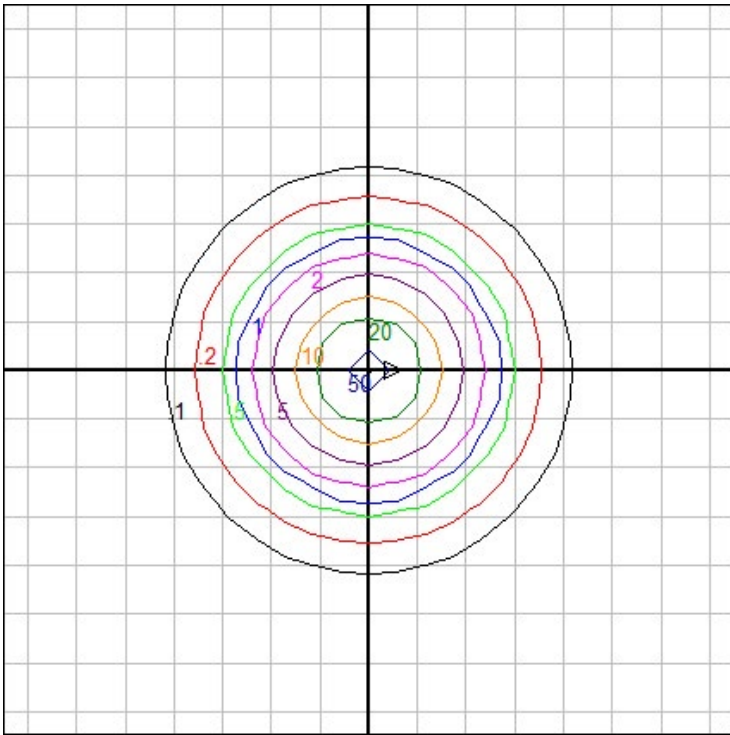


Characteristics

Lumens Per Lamp	N.A. (absolute)
Total Lamp Lumens	N.A. (absolute)
Luminaire Lumens	2252
Total Luminaire Efficiency	N.A.
Luminaire Efficacy Rating (LER)	107
Total Luminaire Watts	21
Ballast Factor	1.00
CIE Type	Direct
Spacing Criterion (0-180)	0.54
Spacing Criterion (90-270)	0.54
Spacing Criterion (Diagonal)	0.52
Basic Luminous Shape	Circular w/ Sides
Luminous Length (0-180)	0.00 ft
Luminous Width (90-270)	0.52 ft (Diameter)
Luminous Height	0.49 ft

Zonal Lumen Summary

Zone	Lumens
0-10	510.94
10-20	862.18
20-30	538.06
30-40	251.20
40-50	61.87
50-60	24.98
60-70	1.93
70-80	0.36
80-90	0.46
90-100	0.00
100-110	0.00
110-120	0.00
120-130	0.00
130-140	0.00
140-150	0.00
150-160	0.00
160-170	0.00
170-180	0.00



Mounting Height: 10 ft.

Grid Spacing: 3 ft.

In the interest of product improvement, BEGA reserves the right to make technical changes without notice.

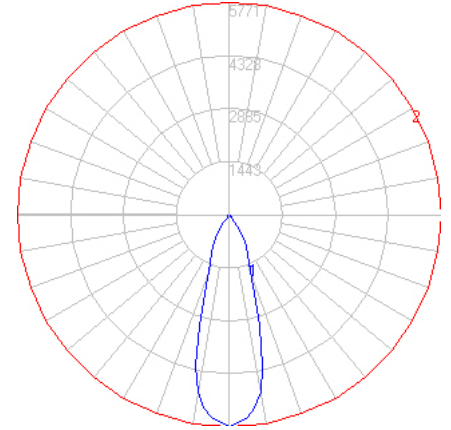
BEGA 1000 Bega Way, Carpinteria, CA 93013 (805)684-0533 Fax (805)566-9474 www.bega-us.com © Copyright BEGA-US 2020

08/03/20

BEGA

File: 50631K35_BEGA_IES.ies

TEST: BE_50631K4
 TEST LAB: BEGA
 DATE: 09/28/2017
 LUMINAIRE: 50 631K35
 LAMP: 17.0W LED

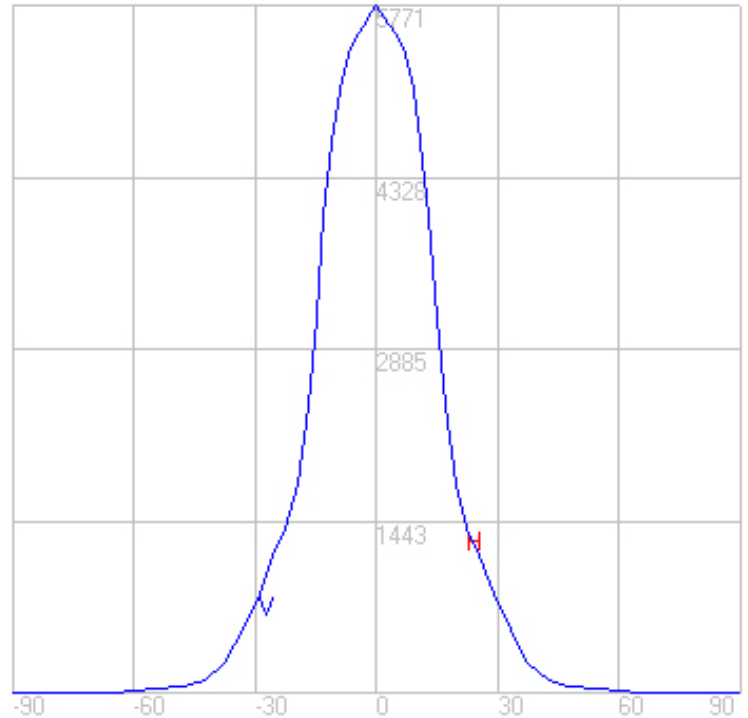
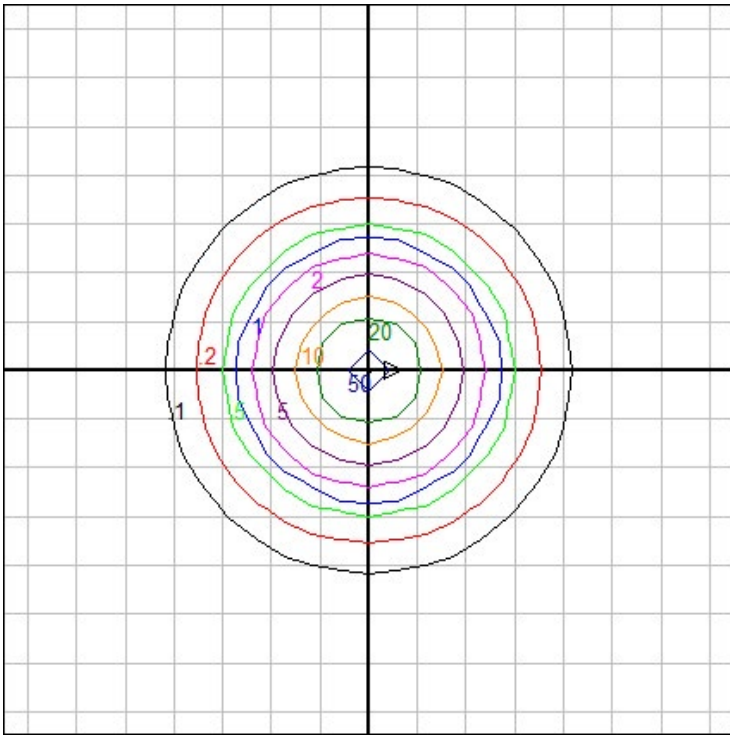


Characteristics

Lumens Per Lamp	N.A. (absolute)
Total Lamp Lumens	N.A. (absolute)
Luminaire Lumens	2247
Total Luminaire Efficiency	N.A.
Luminaire Efficacy Rating (LER)	107
Total Luminaire Watts	21
Ballast Factor	1.00
CIE Type	Direct
Spacing Criterion (0-180)	0.54
Spacing Criterion (90-270)	0.54
Spacing Criterion (Diagonal)	0.52
Basic Luminous Shape	Circular w/ Sides
Luminous Length (0-180)	0.00 ft
Luminous Width (90-270)	0.52 ft (Diameter)
Luminous Height	0.49 ft

Zonal Lumen Summary

Zone	Lumens
0-10	509.92
10-20	860.46
20-30	536.98
30-40	250.70
40-50	61.74
50-60	24.93
60-70	1.92
70-80	0.36
80-90	0.46
90-100	0.00
100-110	0.00
110-120	0.00
120-130	0.00
130-140	0.00
140-150	0.00
150-160	0.00
160-170	0.00
170-180	0.00



Mounting Height: 10 ft.

Grid Spacing: 3 ft.

In the interest of product improvement, BEGA reserves the right to make technical changes without notice.

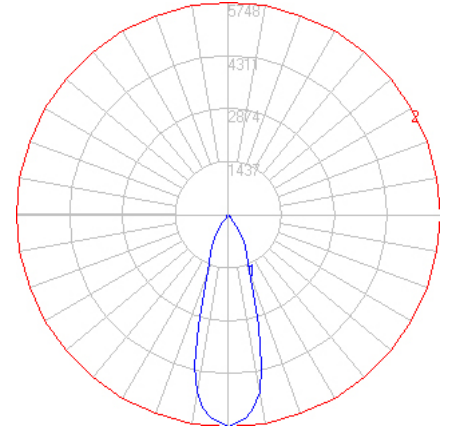
BEGA 1000 Bega Way, Carpinteria, CA 93013 (805)684-0533 Fax (805)566-9474 www.bega-us.com © Copyright BEGA-US 2020

08/03/20

BEGA

File: 50631K3_BEGA_IES.ies

TEST: BE_50631K4
 TEST LAB: BEGA
 DATE: 09/28/2017
 LUMINAIRE: 50 631K3
 LAMP: 17.0W LED

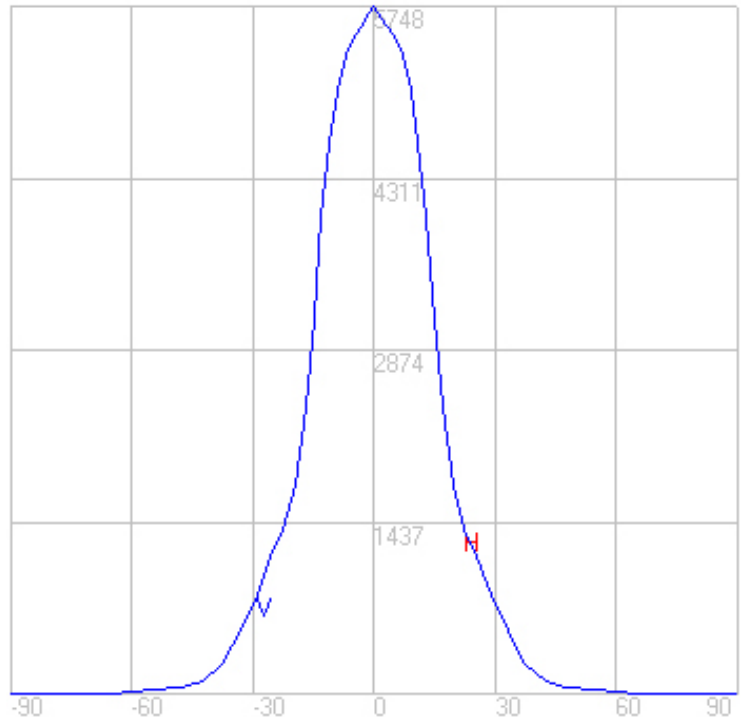
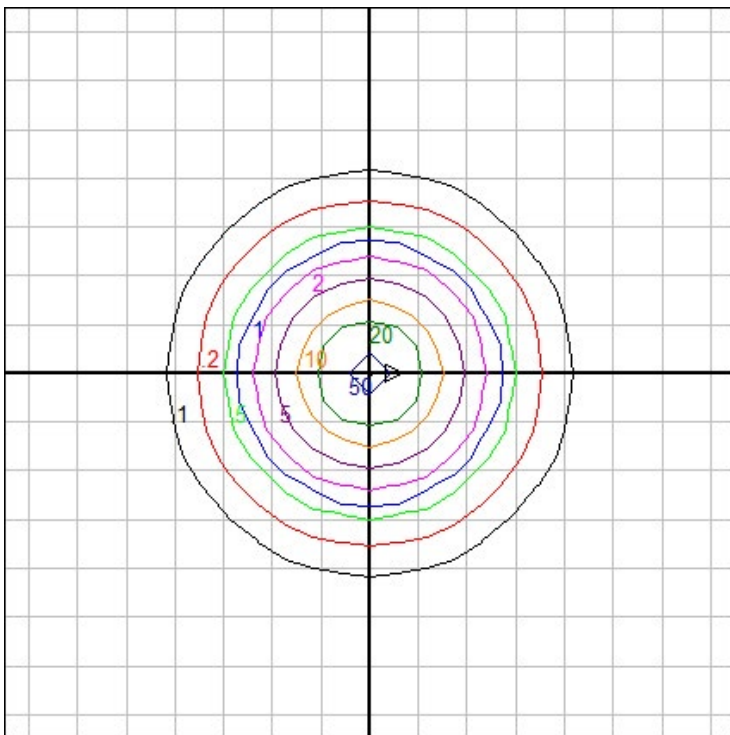


Characteristics

Lumens Per Lamp	N.A. (absolute)
Total Lamp Lumens	N.A. (absolute)
Luminaire Lumens	2238
Total Luminaire Efficiency	N.A.
Luminaire Efficacy Rating (LER)	107
Total Luminaire Watts	21
Ballast Factor	1.00
CIE Type	Direct
Spacing Criterion (0-180)	0.54
Spacing Criterion (90-270)	0.54
Spacing Criterion (Diagonal)	0.52
Basic Luminous Shape	Circular w/ Sides
Luminous Length (0-180)	0.00 ft
Luminous Width (90-270)	0.52 ft (Diameter)
Luminous Height	0.49 ft

Zonal Lumen Summary

Zone	Lumens
0-10	507.88
10-20	857.01
20-30	534.83
30-40	249.69
40-50	61.50
50-60	24.83
60-70	1.91
70-80	0.36
80-90	0.46
90-100	0.00
100-110	0.00
110-120	0.00
120-130	0.00
130-140	0.00
140-150	0.00
150-160	0.00
160-170	0.00
170-180	0.00



Mounting Height: 10 ft.

Grid Spacing: 3 ft.

In the interest of product improvement, BEGA reserves the right to make technical changes without notice.

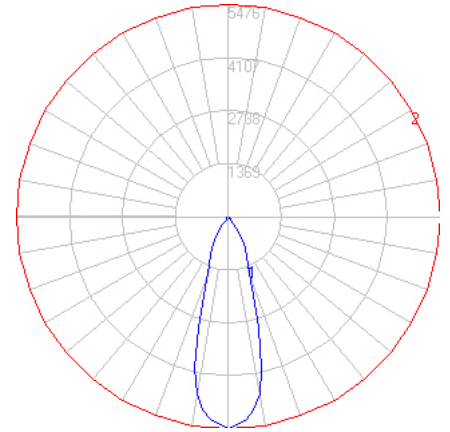
BEGA 1000 Bega Way, Carpinteria, CA 93013 (805)684-0533 Fax (805)566-9474 www.bega-us.com © Copyright BEGA-US 2020

08/03/20

BEGA

File: 50631K27_BEGA_IES.ies

TEST: BE_50631K4
 TEST LAB: BEGA
 DATE: 09/28/2017
 LUMINAIRE: 50 631K27
 LAMP: 17.0W LED

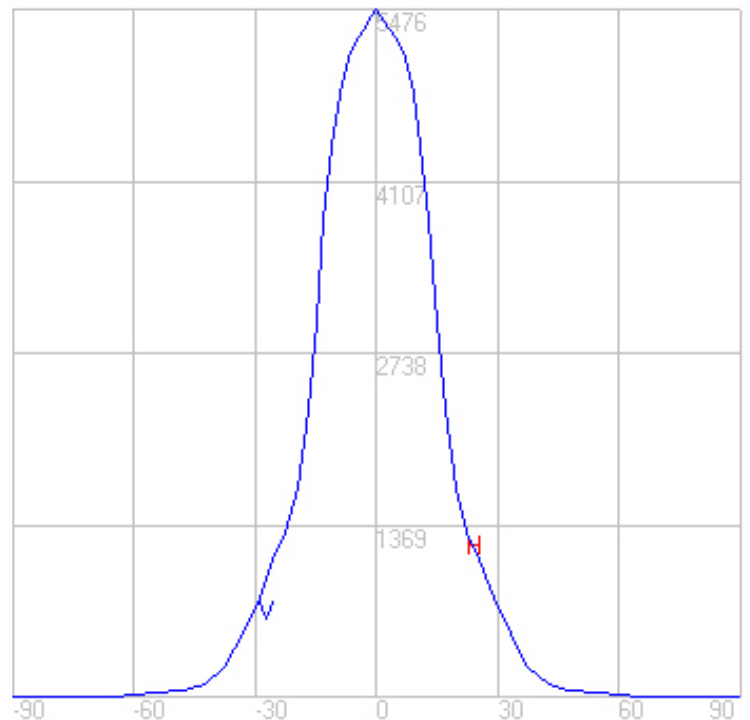
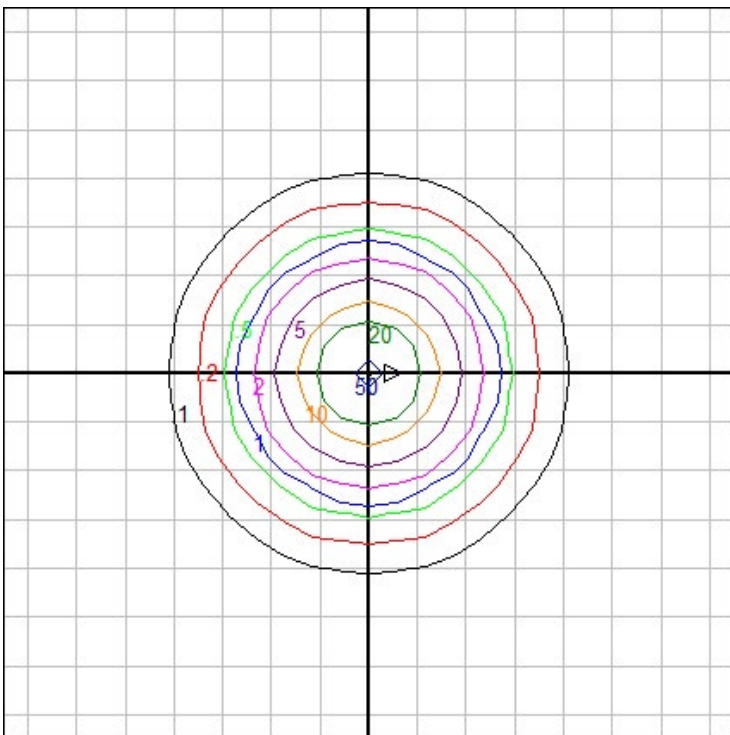


Characteristics

Lumens Per Lamp	N.A. (absolute)
Total Lamp Lumens	N.A. (absolute)
Luminaire Lumens	2133
Total Luminaire Efficiency	N.A.
Luminaire Efficacy Rating (LER)	102
Total Luminaire Watts	21
Ballast Factor	1.00
CIE Type	Direct
Spacing Criterion (0-180)	0.54
Spacing Criterion (90-270)	0.54
Spacing Criterion (Diagonal)	0.52
Basic Luminous Shape	Circular w/ Sides
Luminous Length (0-180)	0.00 ft
Luminous Width (90-270)	0.52 ft (Diameter)
Luminous Height	0.49 ft

Zonal Lumen Summary

Zone	Lumens
0-10	483.86
10-20	816.49
20-30	509.54
30-40	237.89
40-50	58.59
50-60	23.66
60-70	1.82
70-80	0.34
80-90	0.44
90-100	0.00
100-110	0.00
110-120	0.00
120-130	0.00
130-140	0.00
140-150	0.00
150-160	0.00
160-170	0.00
170-180	0.00



Mounting Height: 10 ft.

Grid Spacing: 3 ft.

In the interest of product improvement, BEGA reserves the right to make technical changes without notice.

BEGA 1000 Bega Way, Carpinteria, CA 93013 (805)684-0533 Fax (805)566-9474 www.bega-us.com © Copyright BEGA-US 2020

08/03/20