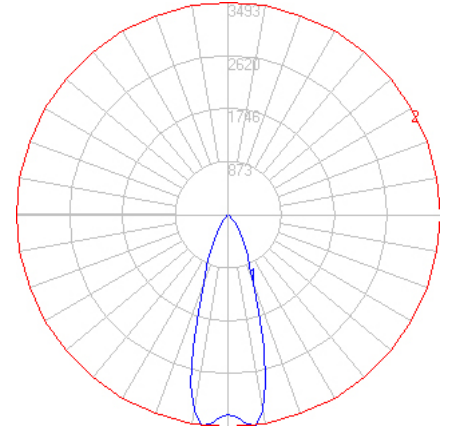


BEGA

File: 50629K4_BEGA_IES.ies

TEST: BE_50629K4
 TEST LAB: BEGA
 DATE: 09/11/2017
 LUMINAIRE: 50 629K4
 LAMP: 11.5W LED

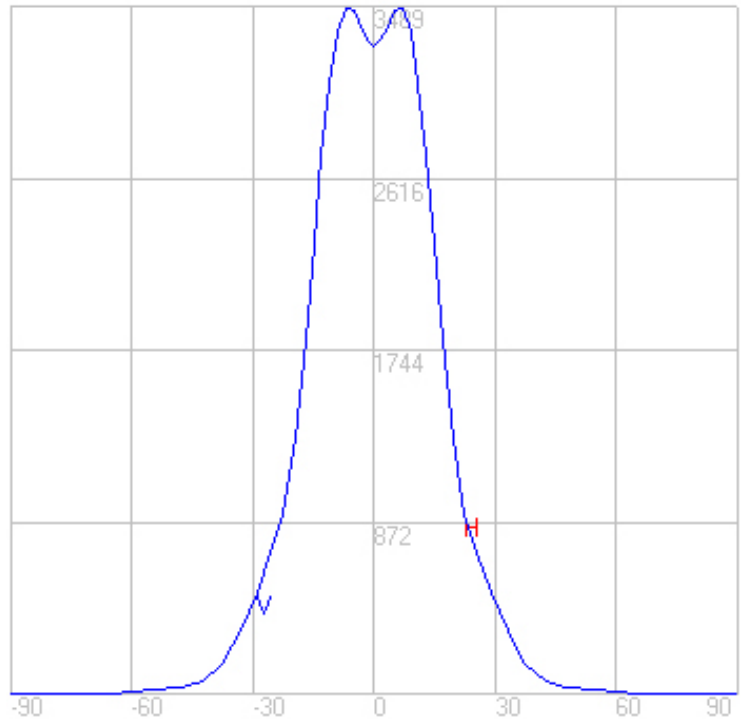
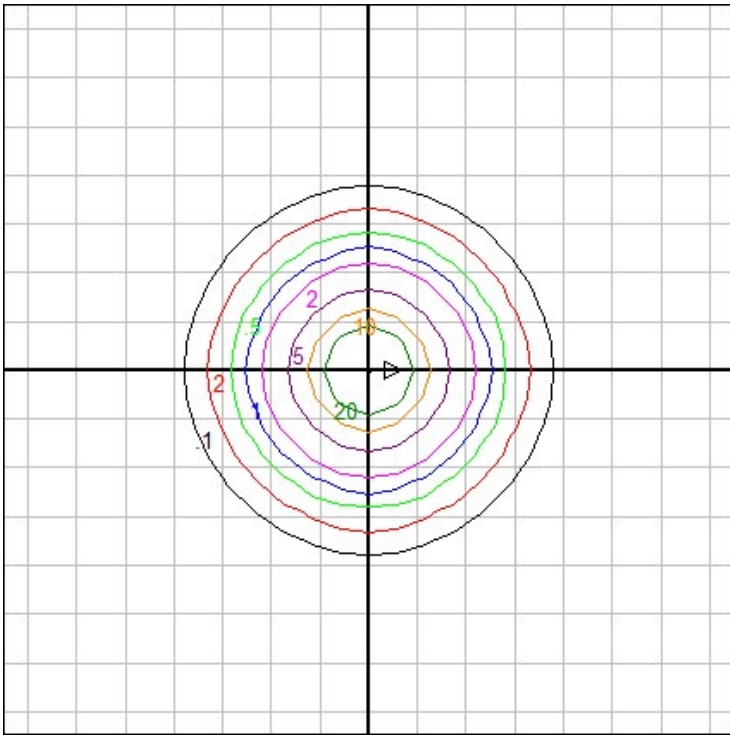


Characteristics

Lumens Per Lamp	N.A. (absolute)
Total Lamp Lumens	N.A. (absolute)
Luminaire Lumens	1497
Total Luminaire Efficiency	N.A.
Luminaire Efficacy Rating (LER)	107
Total Luminaire Watts	14
Ballast Factor	1.00
CIE Type	Direct
Spacing Criterion (0-180)	0.60
Spacing Criterion (90-270)	0.60
Spacing Criterion (Diagonal)	0.56
Basic Luminous Shape	Circular w/ Sides
Luminous Length (0-180)	0.00 ft
Luminous Width (90-270)	0.39 ft (Diameter)
Luminous Height	0.41 ft

Zonal Lumen Summary

Zone	Lumens
0-10	325.75
10-20	608.85
20-30	349.15
30-40	155.69
40-50	39.84
50-60	15.34
60-70	1.25
70-80	0.33
80-90	0.37
90-100	0.00
100-110	0.00
110-120	0.00
120-130	0.00
130-140	0.00
140-150	0.00
150-160	0.00
160-170	0.00
170-180	0.00



Mounting Height: 10 ft.

Grid Spacing: 3 ft.

In the interest of product improvement, BEGA reserves the right to make technical changes without notice.

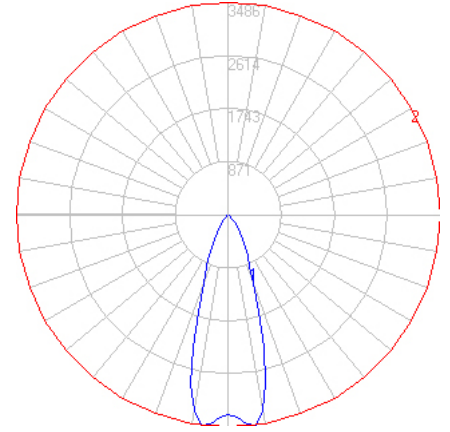
BEGA 1000 Bega Way, Carpinteria, CA 93013 (805)684-0533 Fax (805)566-9474 www.bega-us.com © Copyright BEGA-US 2020

06/09/20

BEGA

File: 50629K35_BEGA_IES.ies

TEST: BE_50629K4
 TEST LAB: BEGA
 DATE: 09/11/2017
 LUMINAIRE: 50 629K35
 LAMP: 11.5W LED

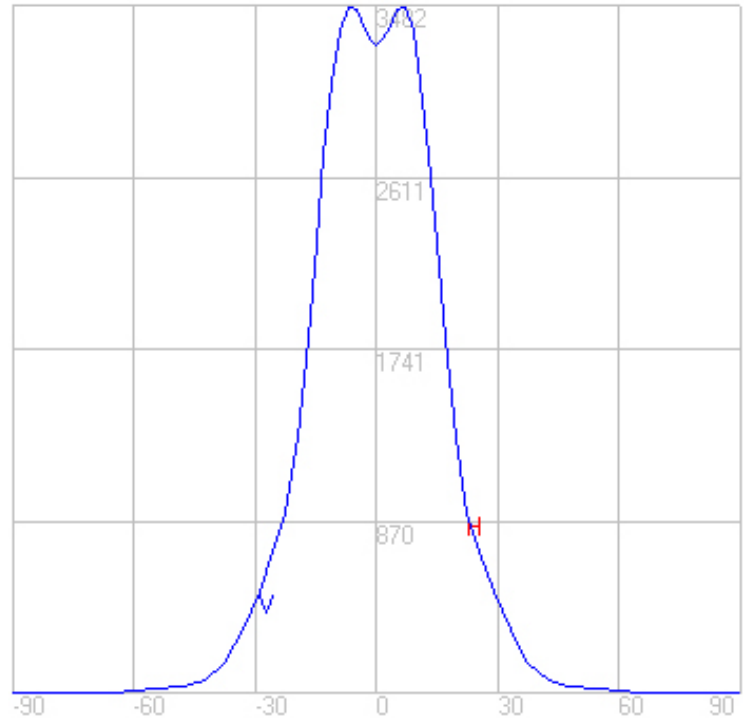
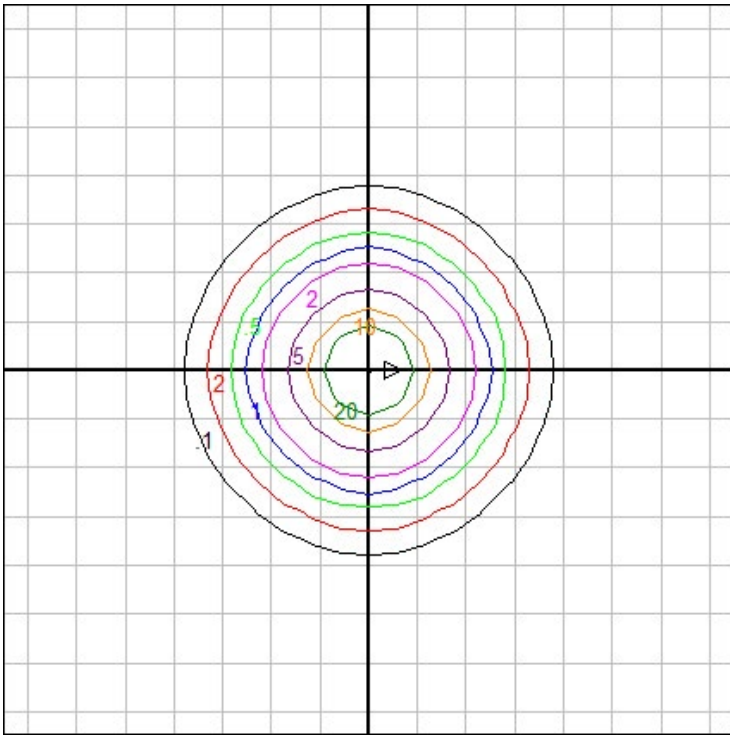


Characteristics

Lumens Per Lamp	N.A. (absolute)
Total Lamp Lumens	N.A. (absolute)
Luminaire Lumens	1494
Total Luminaire Efficiency	N.A.
Luminaire Efficacy Rating (LER)	107
Total Luminaire Watts	14
Ballast Factor	1.00
CIE Type	Direct
Spacing Criterion (0-180)	0.60
Spacing Criterion (90-270)	0.60
Spacing Criterion (Diagonal)	0.56
Basic Luminous Shape	Circular w/ Sides
Luminous Length (0-180)	0.00 ft
Luminous Width (90-270)	0.39 ft (Diameter)
Luminous Height	0.41 ft

Zonal Lumen Summary

Zone	Lumens
0-10	325.10
10-20	607.63
20-30	348.45
30-40	155.38
40-50	39.77
50-60	15.31
60-70	1.25
70-80	0.33
80-90	0.37
90-100	0.00
100-110	0.00
110-120	0.00
120-130	0.00
130-140	0.00
140-150	0.00
150-160	0.00
160-170	0.00
170-180	0.00



Mounting Height: 10 ft.

Grid Spacing: 3 ft.

In the interest of product improvement, BEGA reserves the right to make technical changes without notice.

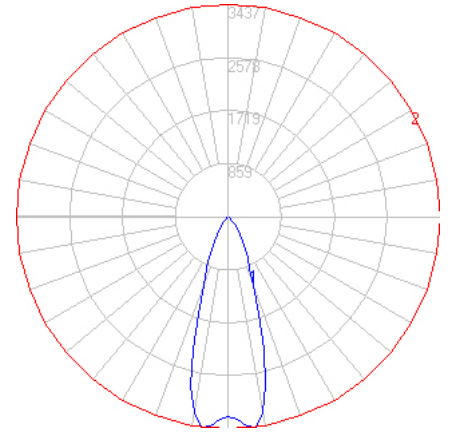
BEGA 1000 Bega Way, Carpinteria, CA 93013 (805)684-0533 Fax (805)566-9474 www.bega-us.com © Copyright BEGA-US 2020

06/09/20

BEGA

File: 50629K3_BEGA_IES.ies

TEST: BE_50629K4
 TEST LAB: BEGA
 DATE: 09/11/2017
 LUMINAIRE: 50 629K3
 LAMP: 11.5W LED

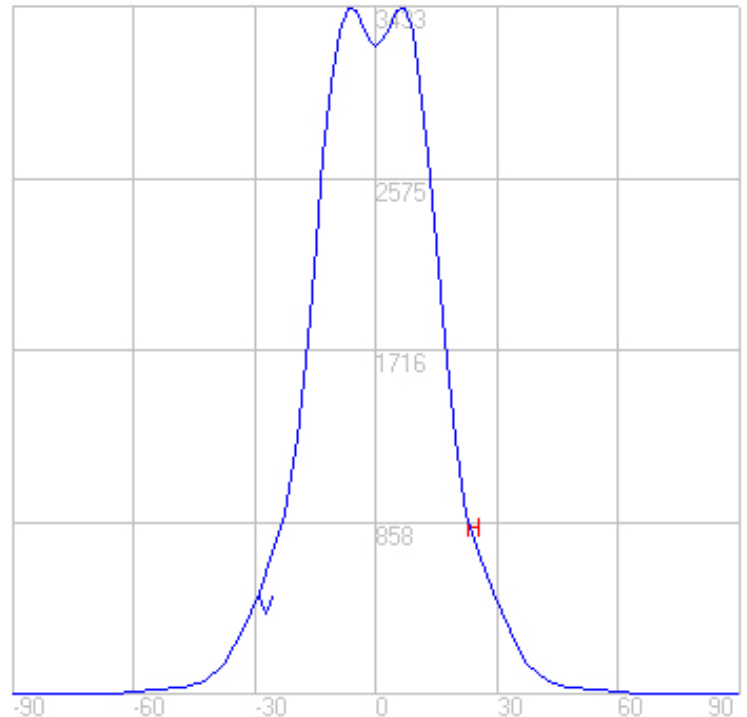
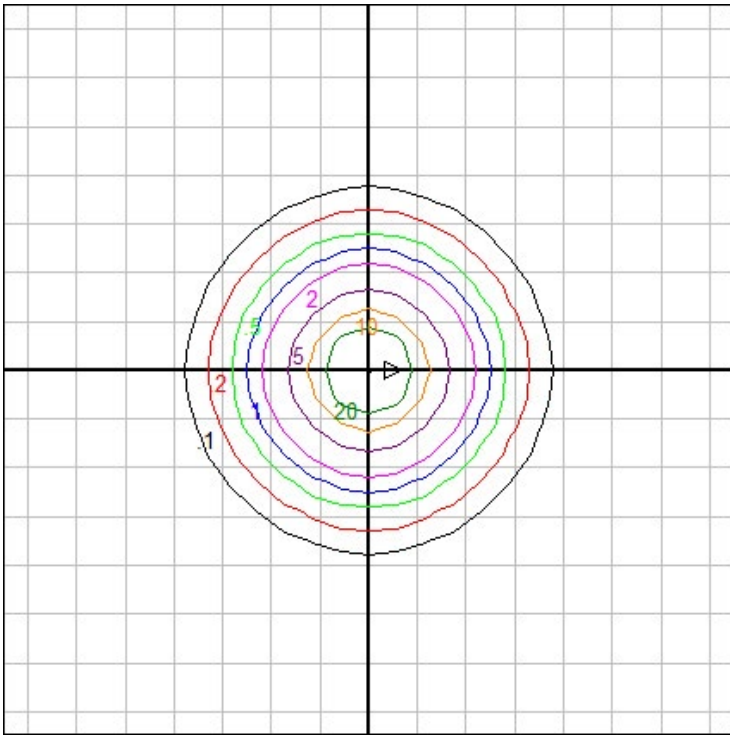


Characteristics

Lumens Per Lamp	N.A. (absolute)
Total Lamp Lumens	N.A. (absolute)
Luminaire Lumens	1473
Total Luminaire Efficiency	N.A.
Luminaire Efficacy Rating (LER)	105
Total Luminaire Watts	14
Ballast Factor	1.00
CIE Type	Direct
Spacing Criterion (0-180)	0.60
Spacing Criterion (90-270)	0.60
Spacing Criterion (Diagonal)	0.56
Basic Luminous Shape	Circular w/ Sides
Luminous Length (0-180)	0.00 ft
Luminous Width (90-270)	0.39 ft (Diameter)
Luminous Height	0.41 ft

Zonal Lumen Summary

Zone	Lumens
0-10	320.54
10-20	599.10
20-30	343.56
30-40	153.20
40-50	39.21
50-60	15.09
60-70	1.23
70-80	0.33
80-90	0.36
90-100	0.00
100-110	0.00
110-120	0.00
120-130	0.00
130-140	0.00
140-150	0.00
150-160	0.00
160-170	0.00
170-180	0.00



Mounting Height: 10 ft.

Grid Spacing: 3 ft.

In the interest of product improvement, BEGA reserves the right to make technical changes without notice.

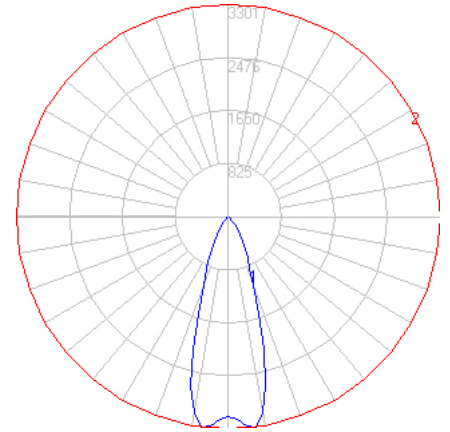
BEGA 1000 Bega Way, Carpinteria, CA 93013 (805)684-0533 Fax (805)566-9474 www.bega-us.com © Copyright BEGA-US 2020

06/09/20

BEGA

File: 50629K27_BEGA_IES.ies

TEST: BE_50629K4
 TEST LAB: BEGA
 DATE: 09/11/2017
 LUMINAIRE: 50 629K27
 LAMP: 11.5W LED

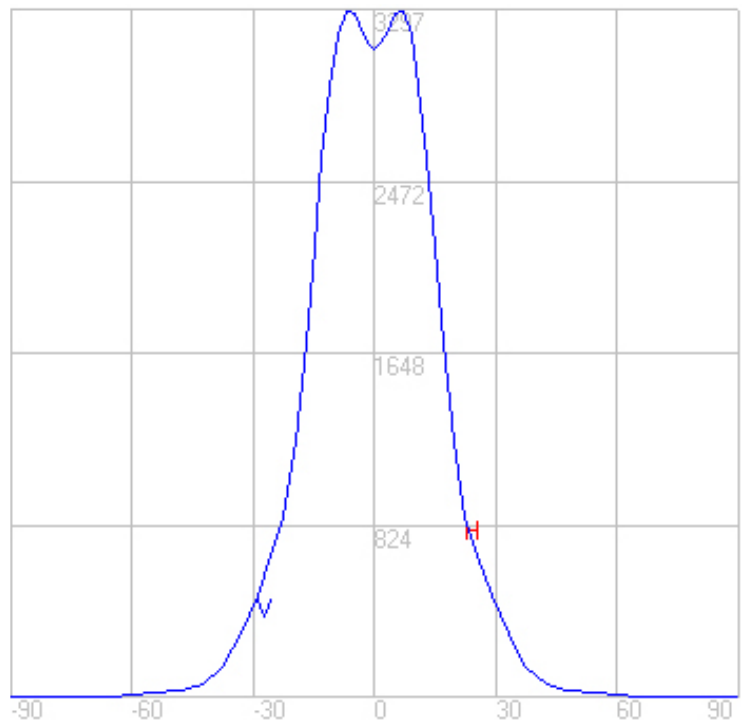
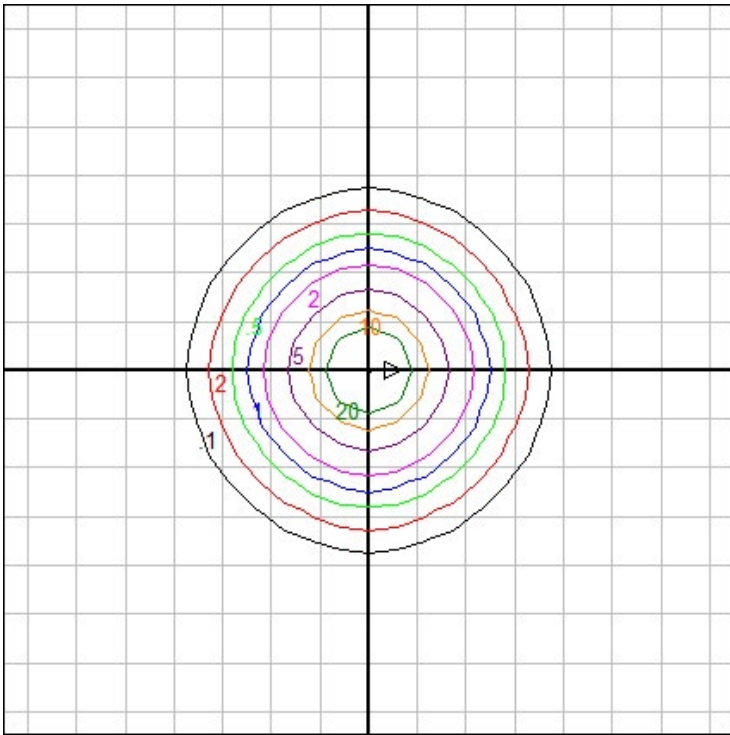


Characteristics

Lumens Per Lamp	N.A. (absolute)
Total Lamp Lumens	N.A. (absolute)
Luminaire Lumens	1414
Total Luminaire Efficiency	N.A.
Luminaire Efficacy Rating (LER)	101
Total Luminaire Watts	14
Ballast Factor	1.00
CIE Type	Direct
Spacing Criterion (0-180)	0.60
Spacing Criterion (90-270)	0.60
Spacing Criterion (Diagonal)	0.56
Basic Luminous Shape	Circular w/ Sides
Luminous Length (0-180)	0.00 ft
Luminous Width (90-270)	0.39 ft (Diameter)
Luminous Height	0.41 ft

Zonal Lumen Summary

Zone	Lumens
0-10	307.83
10-20	575.36
20-30	329.95
30-40	147.13
40-50	37.65
50-60	14.50
60-70	1.18
70-80	0.31
80-90	0.35
90-100	0.00
100-110	0.00
110-120	0.00
120-130	0.00
130-140	0.00
140-150	0.00
150-160	0.00
160-170	0.00
170-180	0.00



Mounting Height: 10 ft.

Grid Spacing: 3 ft.

In the interest of product improvement, BEGA reserves the right to make technical changes without notice.

BEGA 1000 Bega Way, Carpinteria, CA 93013 (805)684-0533 Fax (805)566-9474 www.bega-us.com © Copyright BEGA-US 2020

06/09/20