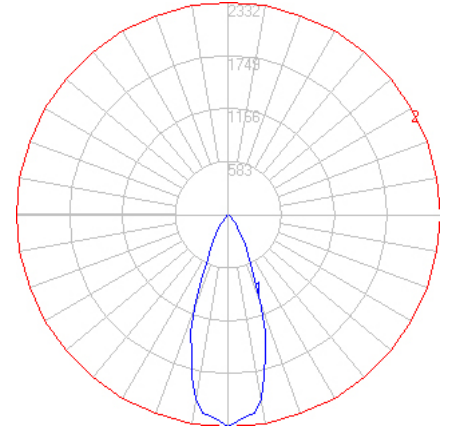


BEGA

File: 50627K4_BEGA_IES.ies

TEST: BE_50627K4
 TEST LAB: BEGA
 DATE: 09/12/2017
 LUMINAIRE: 50 627K4
 LAMP: 8.1W LED

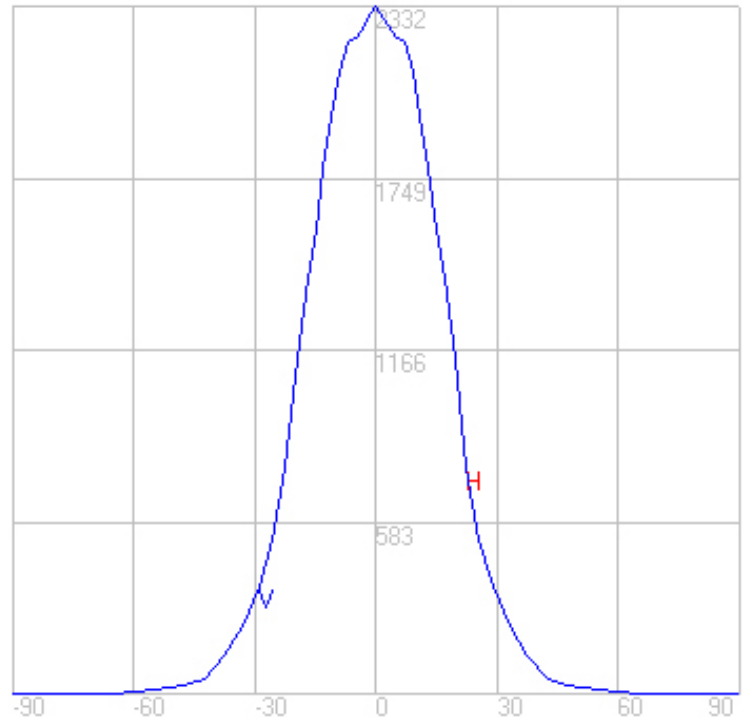
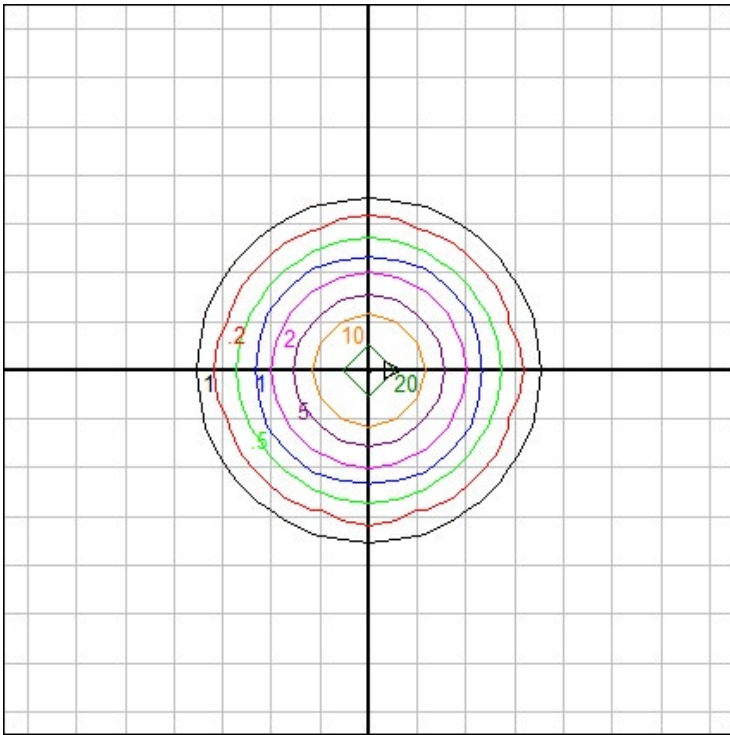


Characteristics

Lumens Per Lamp	N.A. (absolute)
Total Lamp Lumens	N.A. (absolute)
Luminaire Lumens	1076
Total Luminaire Efficiency	N.A.
Luminaire Efficacy Rating (LER)	98
Total Luminaire Watts	11
Ballast Factor	1.00
CIE Type	Direct
Spacing Criterion (0-180)	0.64
Spacing Criterion (90-270)	0.64
Spacing Criterion (Diagonal)	0.60
Basic Luminous Shape	Circular w/ Sides
Luminous Length (0-180)	0.00 ft
Luminous Width (90-270)	0.33 ft (Diameter)
Luminous Height	0.38 ft

Zonal Lumen Summary

Zone	Lumens
0-10	209.23
10-20	435.75
20-30	272.36
30-40	115.35
40-50	30.63
50-60	11.35
60-70	1.34
70-80	0.23
80-90	0.26
90-100	0.00
100-110	0.00
110-120	0.00
120-130	0.00
130-140	0.00
140-150	0.00
150-160	0.00
160-170	0.00
170-180	0.00



Mounting Height: 10 ft.

Grid Spacing: 3 ft.

In the interest of product improvement, BEGA reserves the right to make technical changes without notice.

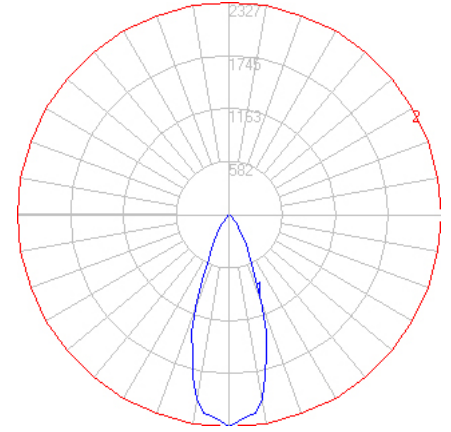
BEGA 1000 Bega Way, Carpinteria, CA 93013 (805)684-0533 Fax (805)566-9474 www.bega-us.com © Copyright BEGA-US 2020

08/03/20

BEGA

File: 50627K35_BEGA_IES.ies

TEST: BE_50627K4
 TEST LAB: BEGA
 DATE: 09/12/2017
 LUMINAIRE: 50 627K35
 LAMP: 8.1W LED

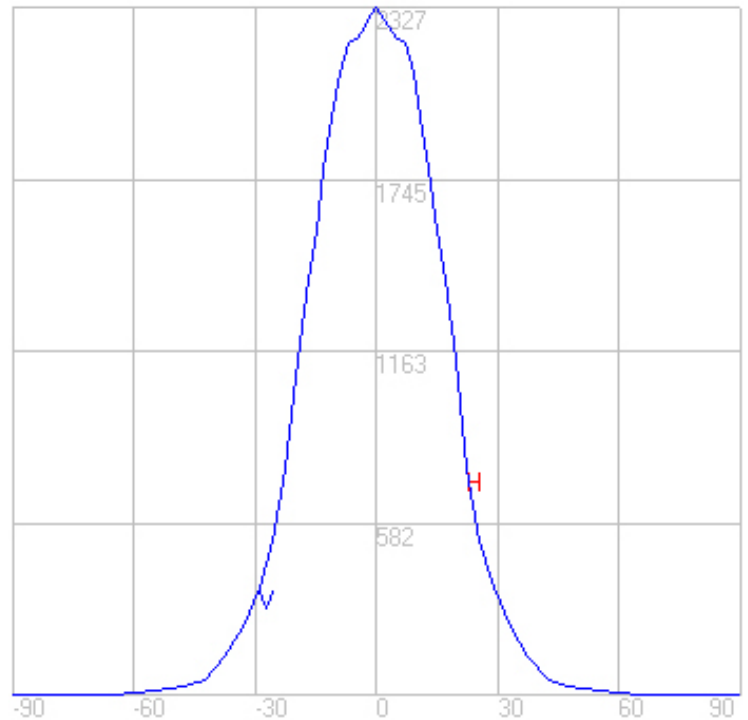
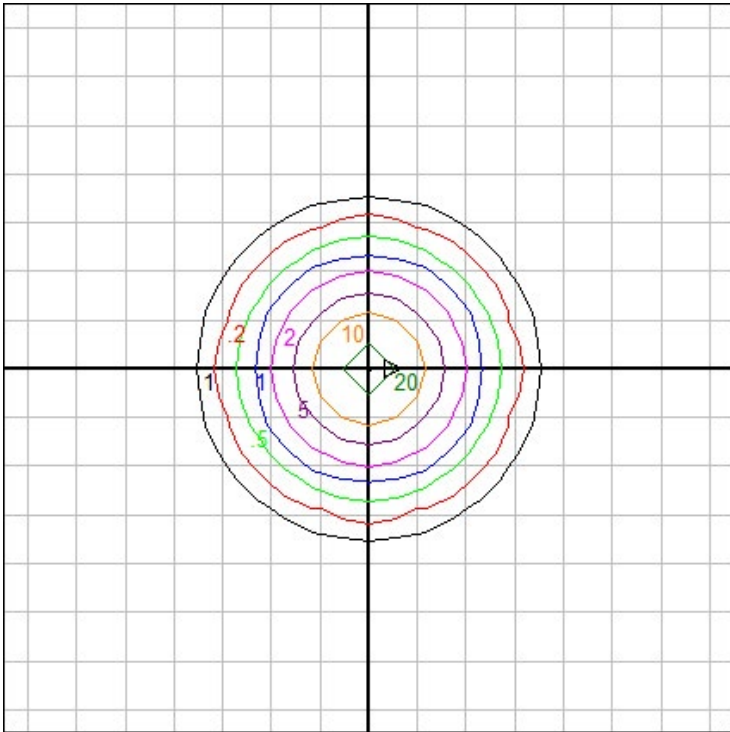


Characteristics

Lumens Per Lamp	N.A. (absolute)
Total Lamp Lumens	N.A. (absolute)
Luminaire Lumens	1074
Total Luminaire Efficiency	N.A.
Luminaire Efficacy Rating (LER)	97
Total Luminaire Watts	11
Ballast Factor	1.00
CIE Type	Direct
Spacing Criterion (0-180)	0.64
Spacing Criterion (90-270)	0.64
Spacing Criterion (Diagonal)	0.60
Basic Luminous Shape	Circular w/ Sides
Luminous Length (0-180)	0.00 ft
Luminous Width (90-270)	0.33 ft (Diameter)
Luminous Height	0.38 ft

Zonal Lumen Summary

Zone	Lumens
0-10	208.81
10-20	434.88
20-30	271.82
30-40	115.12
40-50	30.57
50-60	11.33
60-70	1.33
70-80	0.22
80-90	0.26
90-100	0.00
100-110	0.00
110-120	0.00
120-130	0.00
130-140	0.00
140-150	0.00
150-160	0.00
160-170	0.00
170-180	0.00



Mounting Height: 10 ft.

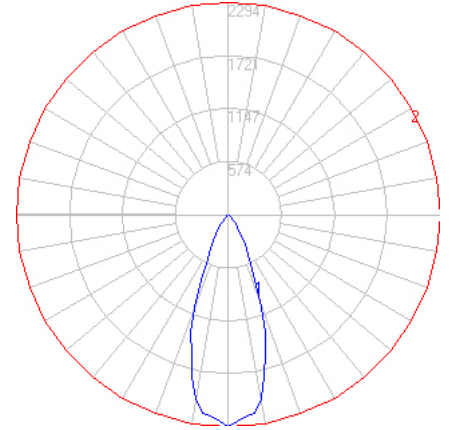
Grid Spacing: 3 ft.

In the interest of product improvement, BEGA reserves the right to make technical changes without notice.

BEGA

File: 50627K3_BEGA_IES.ies

TEST: BE_50627K4
 TEST LAB: BEGA
 DATE: 09/12/2017
 LUMINAIRE: 50 627K3
 LAMP: 8.1W LED

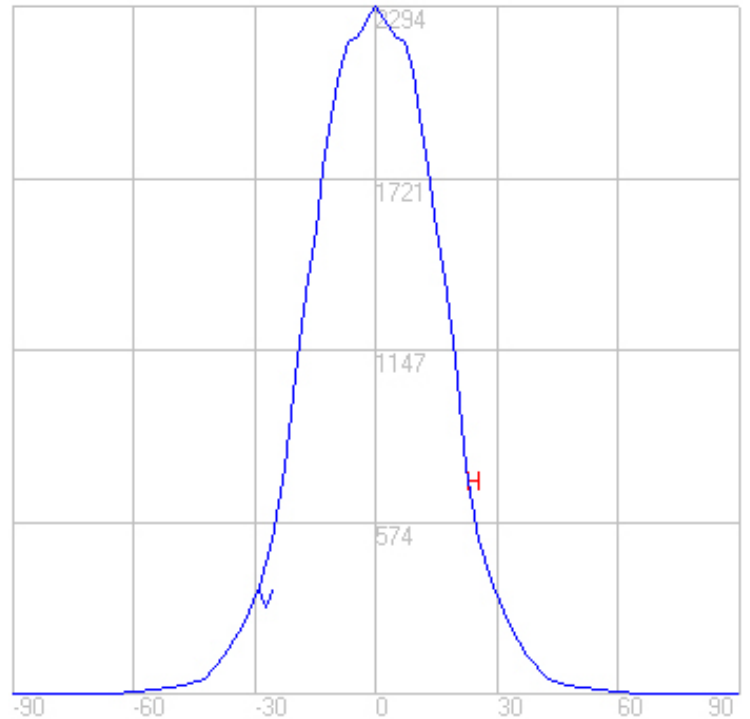
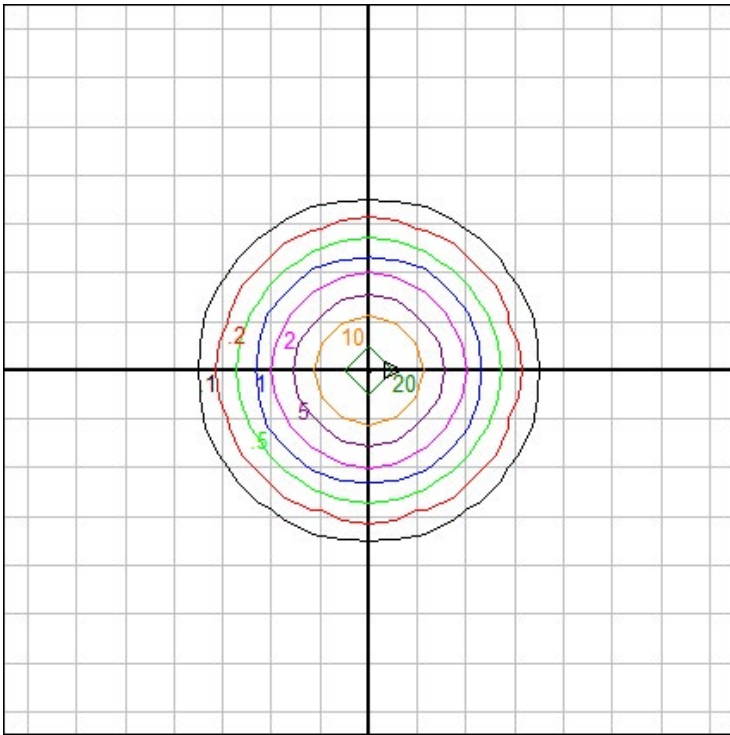


Characteristics

Lumens Per Lamp	N.A. (absolute)
Total Lamp Lumens	N.A. (absolute)
Luminaire Lumens	1059
Total Luminaire Efficiency	N.A.
Luminaire Efficacy Rating (LER)	96
Total Luminaire Watts	11
Ballast Factor	1.00
CIE Type	Direct
Spacing Criterion (0-180)	0.64
Spacing Criterion (90-270)	0.64
Spacing Criterion (Diagonal)	0.60
Basic Luminous Shape	Circular w/ Sides
Luminous Length (0-180)	0.00 ft
Luminous Width (90-270)	0.33 ft (Diameter)
Luminous Height	0.38 ft

Zonal Lumen Summary

Zone	Lumens
0-10	205.88
10-20	428.78
20-30	268.01
30-40	113.50
40-50	30.14
50-60	11.17
60-70	1.31
70-80	0.22
80-90	0.25
90-100	0.00
100-110	0.00
110-120	0.00
120-130	0.00
130-140	0.00
140-150	0.00
150-160	0.00
160-170	0.00
170-180	0.00



Mounting Height: 10 ft.

Grid Spacing: 3 ft.

In the interest of product improvement, BEGA reserves the right to make technical changes without notice.

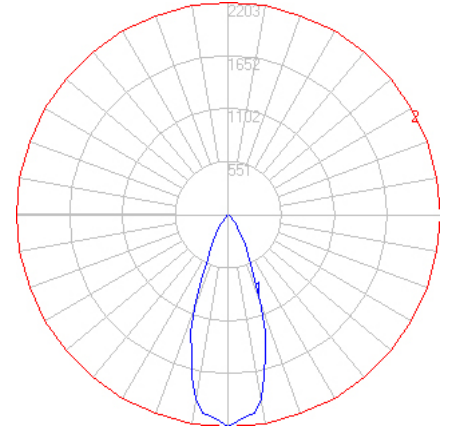
BEGA 1000 Bega Way, Carpinteria, CA 93013 (805)684-0533 Fax (805)566-9474 www.bega-us.com © Copyright BEGA-US 2020

08/03/20

BEGA

File: 50627K27_BEGA_IES.ies

TEST: BE_50627K4
 TEST LAB: BEGA
 DATE: 09/12/2017
 LUMINAIRE: 50 627K27
 LAMP: 8.1W LED

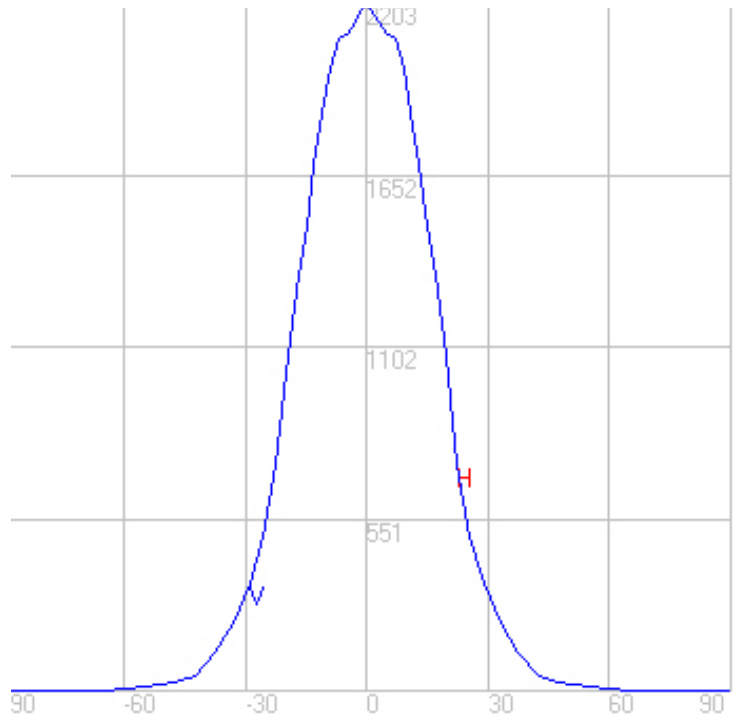
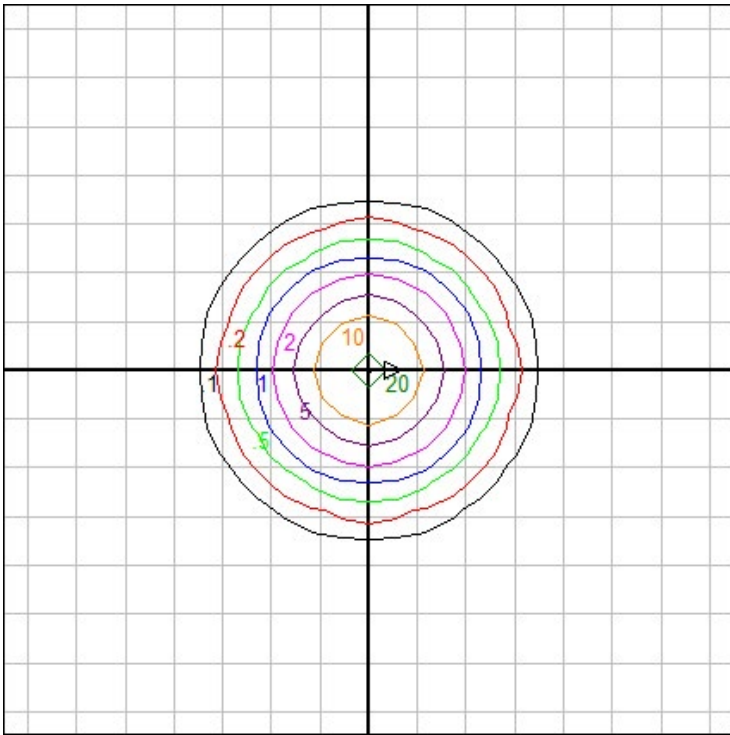


Characteristics

Lumens Per Lamp	N.A. (absolute)
Total Lamp Lumens	N.A. (absolute)
Luminaire Lumens	1017
Total Luminaire Efficiency	N.A.
Luminaire Efficacy Rating (LER)	92
Total Luminaire Watts	11
Ballast Factor	1.00
CIE Type	Direct
Spacing Criterion (0-180)	0.64
Spacing Criterion (90-270)	0.64
Spacing Criterion (Diagonal)	0.60
Basic Luminous Shape	Circular w/ Sides
Luminous Length (0-180)	0.00 ft
Luminous Width (90-270)	0.33 ft (Diameter)
Luminous Height	0.38 ft

Zonal Lumen Summary

Zone	Lumens
0-10	197.72
10-20	411.78
20-30	257.38
30-40	109.00
40-50	28.95
50-60	10.72
60-70	1.26
70-80	0.21
80-90	0.24
90-100	0.00
100-110	0.00
110-120	0.00
120-130	0.00
130-140	0.00
140-150	0.00
150-160	0.00
160-170	0.00
170-180	0.00



Mounting Height: 10 ft.

Grid Spacing: 3 ft.

In the interest of product improvement, BEGA reserves the right to make technical changes without notice.

BEGA 1000 Bega Way, Carpinteria, CA 93013 (805)684-0533 Fax (805)566-9474 www.bega-us.com © Copyright BEGA-US 2020

08/03/20