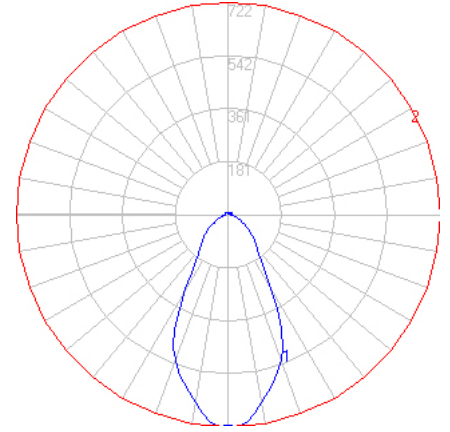


BEGA

File: 50612K4_BEGA_IES.ies

TEST: BE_50612K4
 TEST LAB: BEGA
 DATE: 10/23/2018
 LUMINAIRE: 50 612K4
 LAMP: 8.1W LED

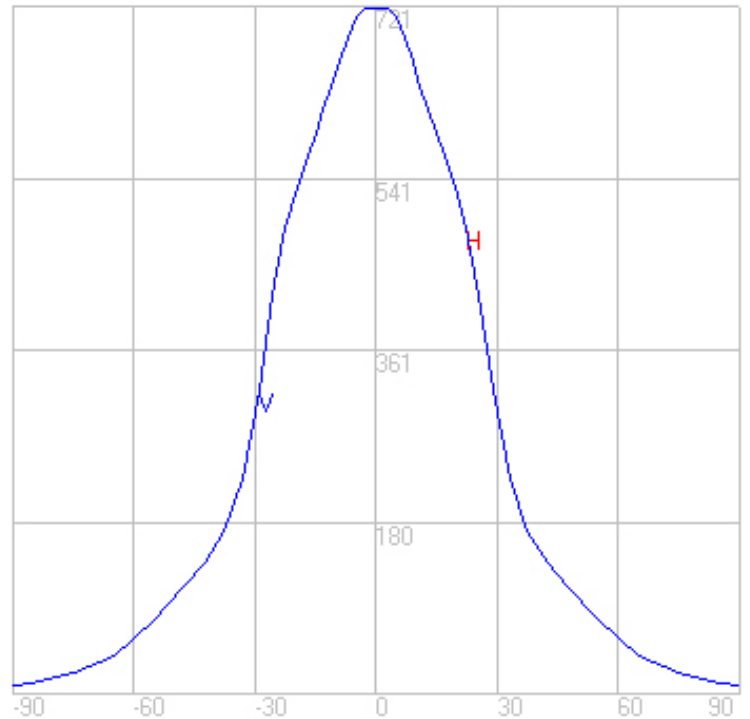
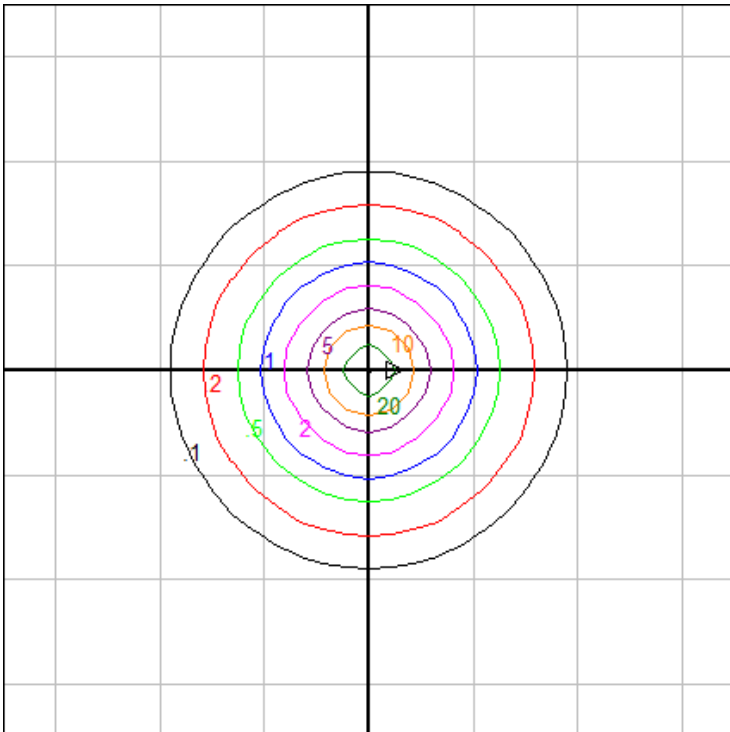


Characteristics

Lumens Per Lamp	N.A. (absolute)
Total Lamp Lumens	N.A. (absolute)
Luminaire Lumens	858
Total Luminaire Efficiency	N.A.
Luminaire Efficacy Rating (LER)	78
Total Luminaire Watts	11
Ballast Factor	1.00
CIE Type	Direct
Spacing Criterion (0-180)	0.88
Spacing Criterion (90-270)	0.88
Spacing Criterion (Diagonal)	0.84
Basic Luminous Shape	Circular w/ Sides
Luminous Length (0-180)	0.00 ft
Luminous Width (90-270)	0.39 ft (Diameter)
Luminous Height	0.05 ft

Zonal Lumen Summary

Zone	Lumens
0-10	65.77
10-20	165.33
20-30	192.25
30-40	126.97
40-50	97.15
50-60	69.67
60-70	41.17
70-80	23.83
80-90	13.26
90-100	10.61
100-110	11.34
110-120	12.97
120-130	11.63
130-140	8.71
140-150	5.35
150-160	1.89
160-170	0.36
170-180	0.01



Mounting Height: 5 ft.

Grid Spacing: 6 ft.

In the interest of product improvement, BEGA reserves the right to make technical changes without notice.

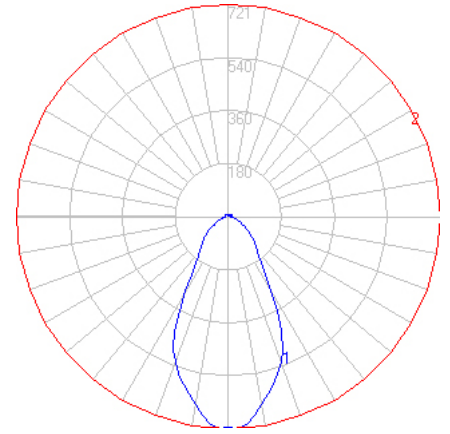
BEGA 1000 Bega Way, Carpinteria, CA 93013 (805)684-0533 Fax (805)566-9474 www.bega-us.com © Copyright BEGA-US 2020

07/14/20

BEGA

File: 50612K35_BEGA_IES.ies

TEST: BE_50612K4
 TEST LAB: BEGA
 DATE: 10/23/2018
 LUMINAIRE: 50 612K35
 LAMP: 8.1W LED

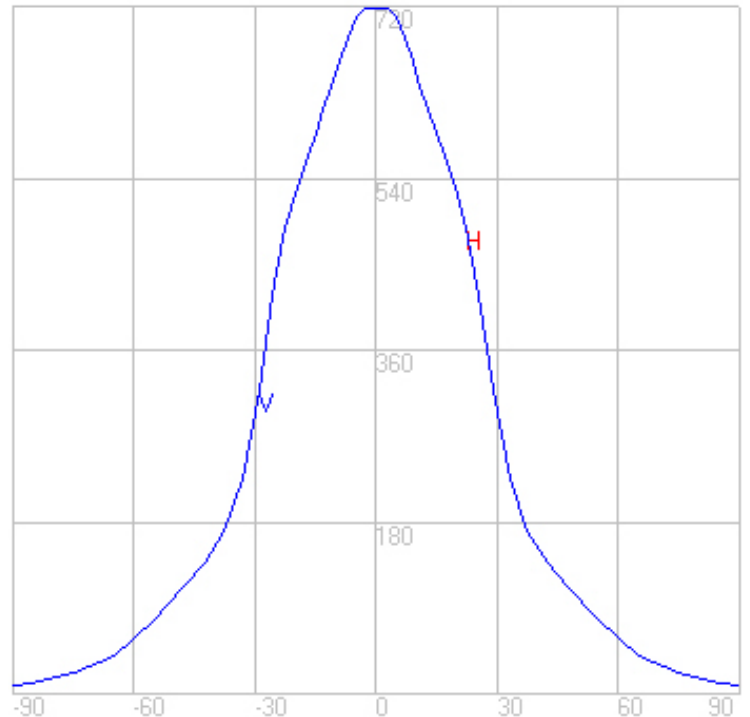
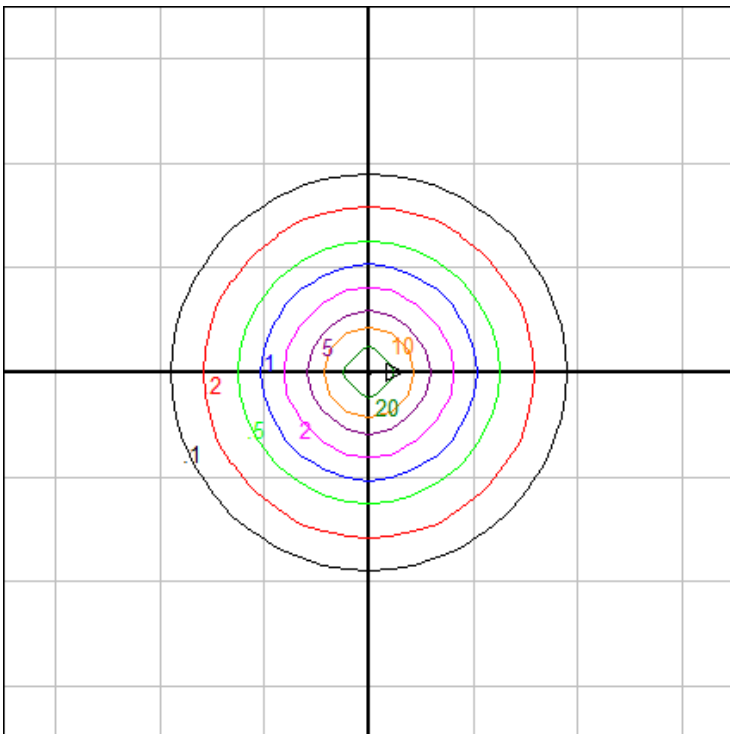


Characteristics

Lumens Per Lamp	N.A. (absolute)
Total Lamp Lumens	N.A. (absolute)
Luminaire Lumens	857
Total Luminaire Efficiency	N.A.
Luminaire Efficacy Rating (LER)	78
Total Luminaire Watts	11
Ballast Factor	1.00
CIE Type	Direct
Spacing Criterion (0-180)	0.88
Spacing Criterion (90-270)	0.88
Spacing Criterion (Diagonal)	0.84
Basic Luminous Shape	Circular w/ Sides
Luminous Length (0-180)	0.00 ft
Luminous Width (90-270)	0.39 ft (Diameter)
Luminous Height	0.05 ft

Zonal Lumen Summary

Zone	Lumens
0-10	65.64
10-20	165.00
20-30	191.86
30-40	126.72
40-50	96.95
50-60	69.53
60-70	41.09
70-80	23.78
80-90	13.23
90-100	10.59
100-110	11.32
110-120	12.94
120-130	11.60
130-140	8.69
140-150	5.34
150-160	1.89
160-170	0.36
170-180	0.01



Mounting Height: 5 ft.

Grid Spacing: 6 ft.

In the interest of product improvement, BEGA reserves the right to make technical changes without notice.

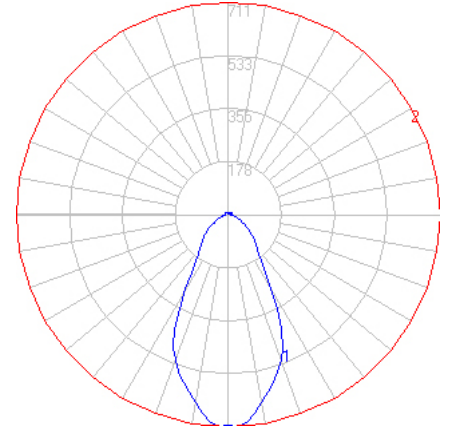
BEGA 1000 Bega Way, Carpinteria, CA 93013 (805)684-0533 Fax (805)566-9474 www.bega-us.com © Copyright BEGA-US 2020

07/14/20

BEGA

File: 50612K3_BEGA_IES.ies

TEST: BE_50612K4
 TEST LAB: BEGA
 DATE: 10/23/2018
 LUMINAIRE: 50 612K3
 LAMP: 8.1W LED

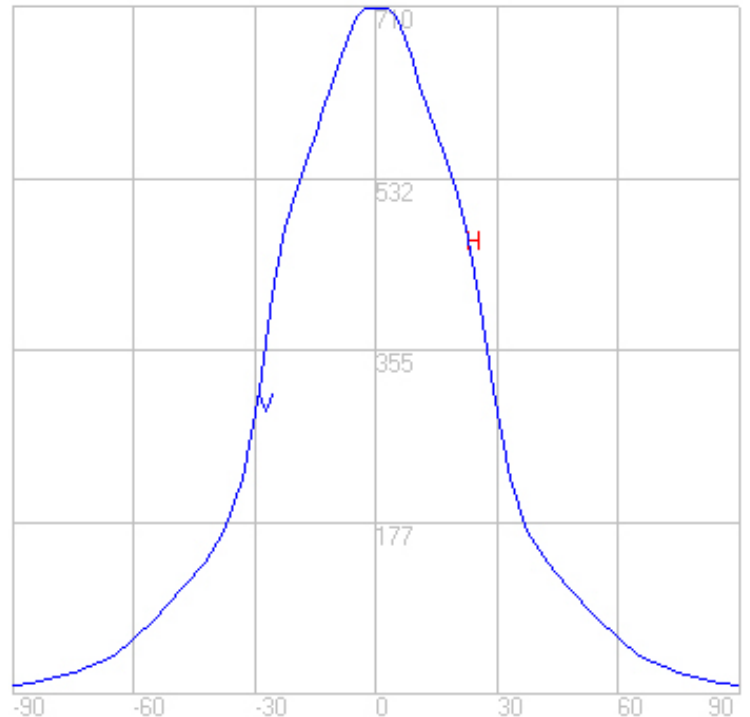
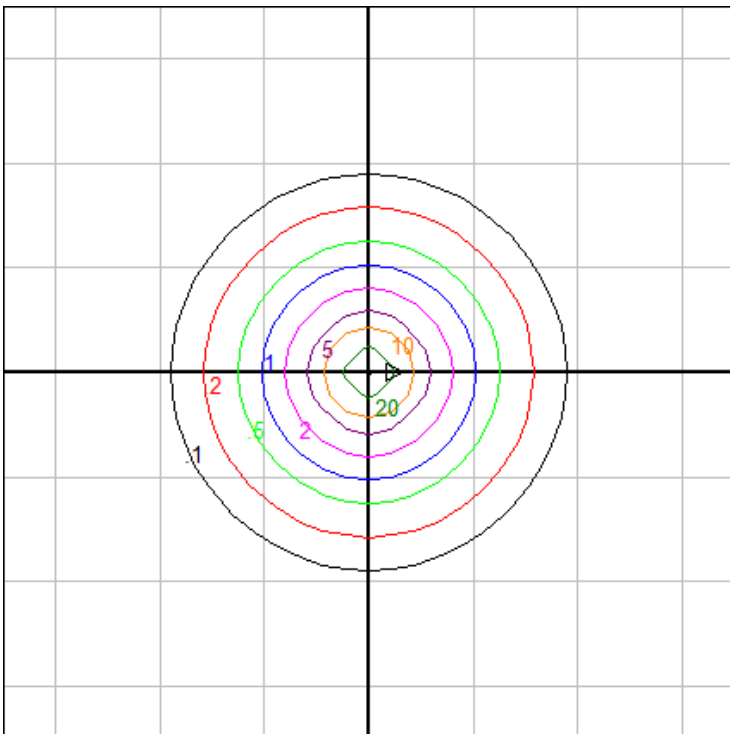


Characteristics

Lumens Per Lamp	N.A. (absolute)
Total Lamp Lumens	N.A. (absolute)
Luminaire Lumens	845
Total Luminaire Efficiency	N.A.
Luminaire Efficacy Rating (LER)	77
Total Luminaire Watts	11
Ballast Factor	1.00
CIE Type	Direct
Spacing Criterion (0-180)	0.88
Spacing Criterion (90-270)	0.88
Spacing Criterion (Diagonal)	0.84
Basic Luminous Shape	Circular w/ Sides
Luminous Length (0-180)	0.00 ft
Luminous Width (90-270)	0.39 ft (Diameter)
Luminous Height	0.05 ft

Zonal Lumen Summary

Zone	Lumens
0-10	64.72
10-20	162.69
20-30	189.17
30-40	124.94
40-50	95.59
50-60	68.55
60-70	40.51
70-80	23.44
80-90	13.05
90-100	10.44
100-110	11.16
110-120	12.76
120-130	11.44
130-140	8.57
140-150	5.27
150-160	1.86
160-170	0.36
170-180	0.01



Mounting Height: 5 ft.

Grid Spacing: 6 ft.

In the interest of product improvement, BEGA reserves the right to make technical changes without notice.

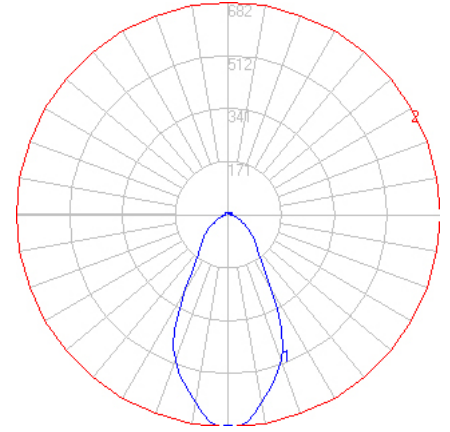
BEGA 1000 Bega Way, Carpinteria, CA 93013 (805)684-0533 Fax (805)566-9474 www.bega-us.com © Copyright BEGA-US 2020

07/14/20

BEGA

File: 50612K27_BEGA_IES.ies

TEST: BE_50612K4
 TEST LAB: BEGA
 DATE: 10/23/2018
 LUMINAIRE: 50 612K27
 LAMP: 8.1W LED

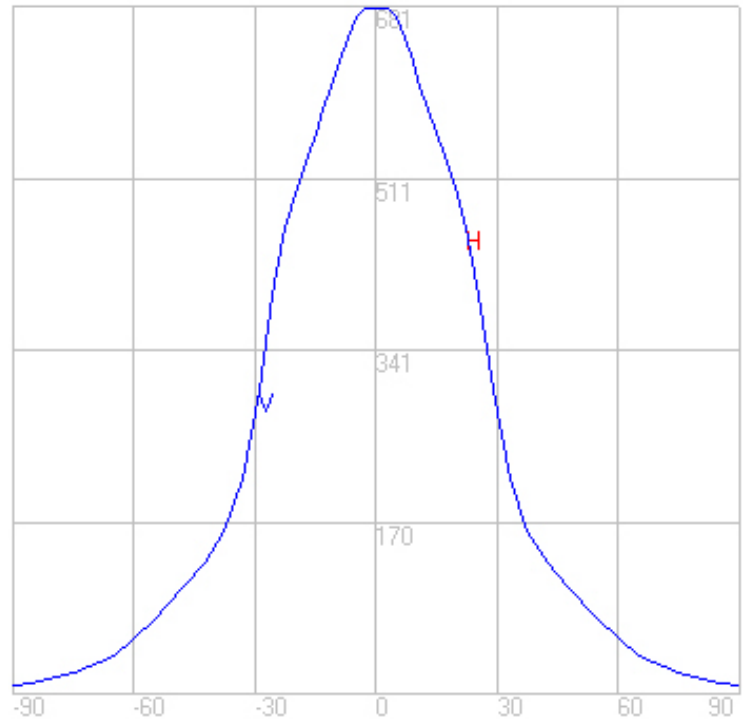
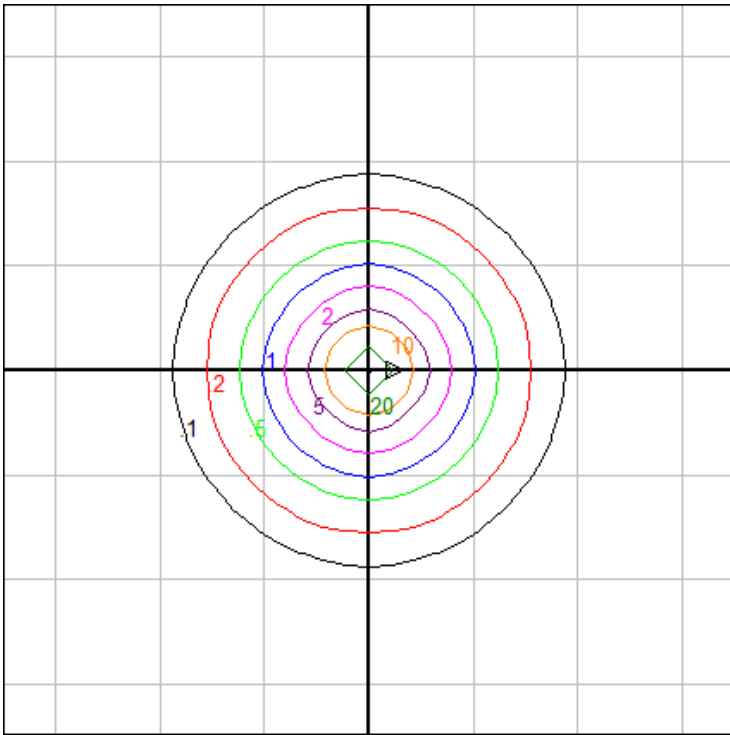


Characteristics

Lumens Per Lamp	N.A. (absolute)
Total Lamp Lumens	N.A. (absolute)
Luminaire Lumens	811
Total Luminaire Efficiency	N.A.
Luminaire Efficacy Rating (LER)	74
Total Luminaire Watts	11
Ballast Factor	1.00
CIE Type	Direct
Spacing Criterion (0-180)	0.88
Spacing Criterion (90-270)	0.88
Spacing Criterion (Diagonal)	0.84
Basic Luminous Shape	Circular w/ Sides
Luminous Length (0-180)	0.00 ft
Luminous Width (90-270)	0.39 ft (Diameter)
Luminous Height	0.05 ft

Zonal Lumen Summary

Zone	Lumens
0-10	62.15
10-20	156.24
20-30	181.67
30-40	119.99
40-50	91.80
50-60	65.83
60-70	38.91
70-80	22.52
80-90	12.53
90-100	10.03
100-110	10.72
110-120	12.26
120-130	10.99
130-140	8.23
140-150	5.06
150-160	1.79
160-170	0.34
170-180	0.01



Mounting Height: 5 ft.

Grid Spacing: 6 ft.

In the interest of product improvement, BEGA reserves the right to make technical changes without notice.