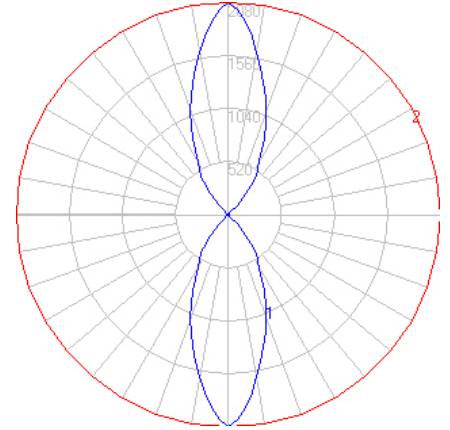


BEGA

File: 50604K4_BEGA_IES.ies

TEST: BE_50604K4
 TEST LAB: BEGA
 DATE: 04/05/2018
 LUMINAIRE: 50 604K4
 LAMP: 23.0W LED

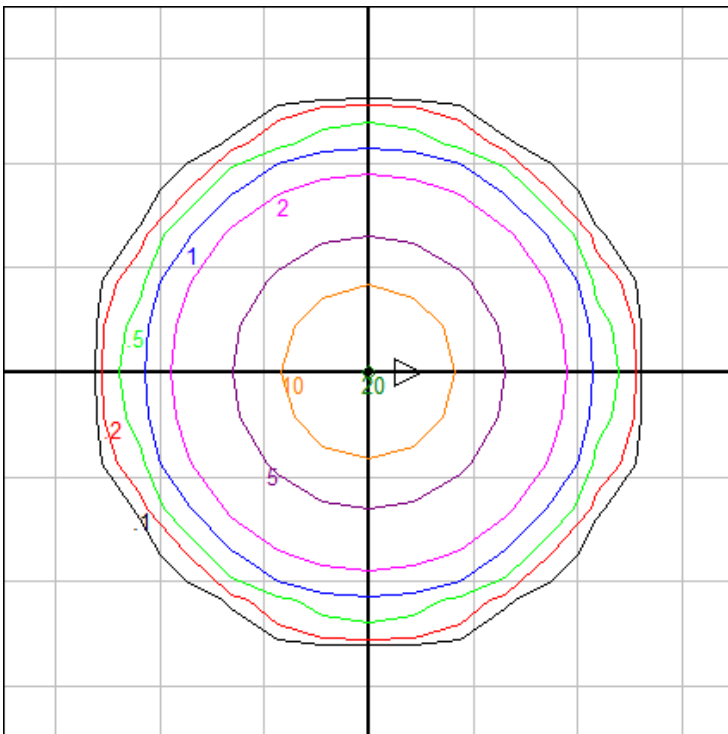


Characteristics

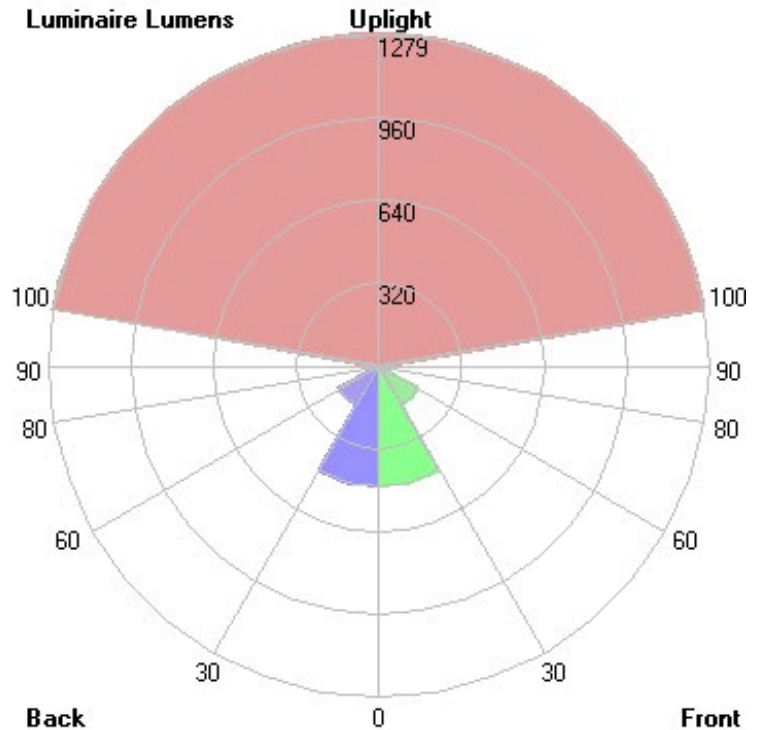
IES Classification	N.A.
Longitudinal Classification	N.A.
Lumens Per Lamp	N.A. (absolute)
Total Lamp Lumens	N.A. (absolute)
Luminaire Lumens	2562
Downward Total Efficiency	N.A.
Total Luminaire Efficiency	N.A.
Luminaire Efficacy Rating (LER)	95
Total Luminaire Watts	27
Ballast Factor	1.00
Upward Waste Light Ratio	0.50
Max. Cd.	2080.4 (0H, 180V)
Max. Cd. (<90 Vert.)	2080.4 (0H, 0V)
Max. Cd. (At 90 Deg. Vert.)	1.2 (0.0%Lum)
Max. Cd. (80 to <90 Deg. Vert.)	1.4 (0.1%Lum)
Cutoff Classification (deprecated)	N.A. (absolute)

Lum. Classification System (LCS)

LCS	Zone	Lumens	%Lamp	%Lum
FL	(0-30)	463.0	N.A.	18.1
FM	(30-60)	174.7	N.A.	6.8
FH	(60-80)	2.0	N.A.	0.1
FVH	(80-90)	0.7	N.A.	0.0
BL	(0-30)	463.0	N.A.	18.1
BM	(30-60)	174.7	N.A.	6.8
BH	(60-80)	2.0	N.A.	0.1
BVH	(80-90)	0.7	N.A.	0.0
UL	(90-100)	1.4	N.A.	0.1
UH	(100-180)	1279.5	N.A.	49.9
Total		2561.7	N.A.	100.0
BUG Rating	B1-U5-G0			



Mounting Height: 10 ft Grid Spacing: 4ft.

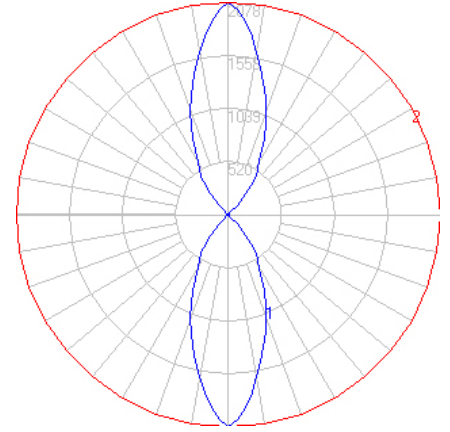


In the interest of product improvement, BEGA reserves the right to make technical changes without notice.

BEGA

File: 50604K35_BEGA_IES.ies

TEST: BE_50604K4
 TEST LAB: BEGA
 DATE: 04/05/2018
 LUMINAIRE: 50 604K35
 LAMP: 23.0W LED

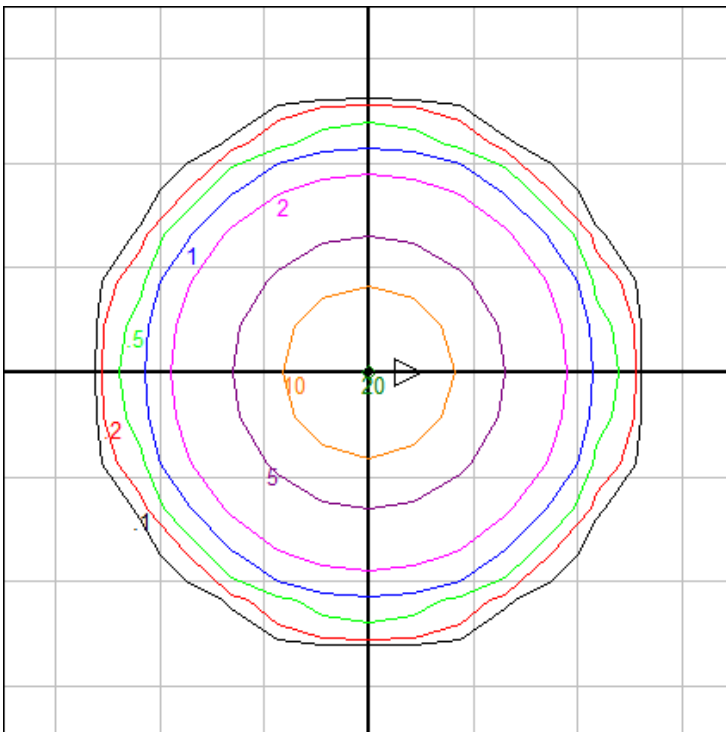


Characteristics

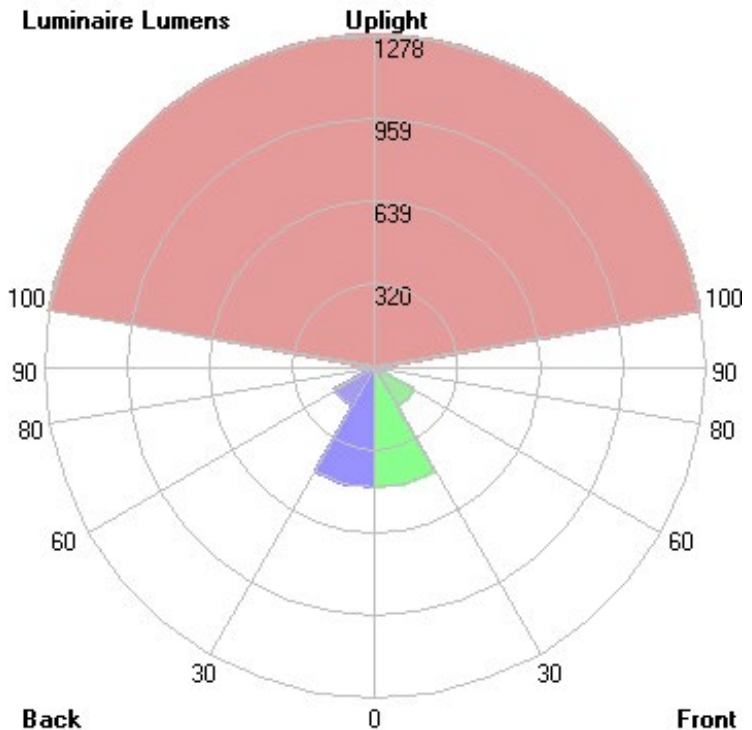
IES Classification	N.A.
Longitudinal Classification	N.A.
Lumens Per Lamp	N.A. (absolute)
Total Lamp Lumens	N.A. (absolute)
Luminaire Lumens	2559
Downward Total Efficiency	N.A.
Total Luminaire Efficiency	N.A.
Luminaire Efficacy Rating (LER)	95
Total Luminaire Watts	27
Ballast Factor	1.00
Upward Waste Light Ratio	0.50
Max. Cd.	2078.32 (0H, 180V)
Max. Cd. (<90 Vert.)	2078.32 (0H, 0V)
Max. Cd. (At 90 Deg. Vert.)	1.199 (0.0%Lum)
Max. Cd. (80 to <90 Deg. Vert.)	1.399 (0.1%Lum)
Cutoff Classification (deprecated)	N.A. (absolute)

Lum. Classification System (LCS)

LCS	Zone	Lumens	%Lamp	%Lum
FL	(0-30)	462.6	N.A.	18.1
FM	(30-60)	174.5	N.A.	6.8
FH	(60-80)	2.0	N.A.	0.1
FVH	(80-90)	0.7	N.A.	0.0
BL	(0-30)	462.6	N.A.	18.1
BM	(30-60)	174.5	N.A.	6.8
BH	(60-80)	2.0	N.A.	0.1
BVH	(80-90)	0.7	N.A.	0.0
UL	(90-100)	1.4	N.A.	0.1
UH	(100-180)	1278.2	N.A.	49.9
Total		2559.2	N.A.	100.0
BUG Rating	B1-U5-G0			



Mounting Height: 10 ft Grid Spacing: 4ft.

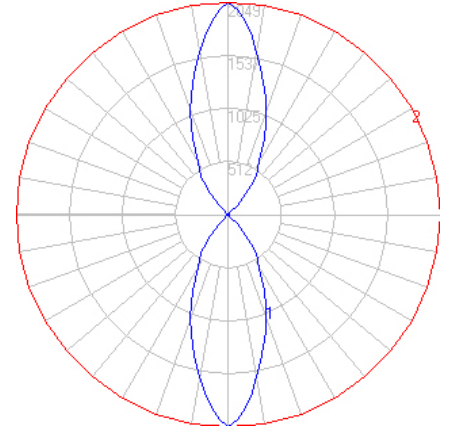


In the interest of product improvement, BEGA reserves the right to make technical changes without notice.

BEGA

File: 50604K3_BEGA_IES.ies

TEST: BE_50604K4
 TEST LAB: BEGA
 DATE: 04/05/2018
 LUMINAIRE: 50 604K3
 LAMP: 23.0W LED

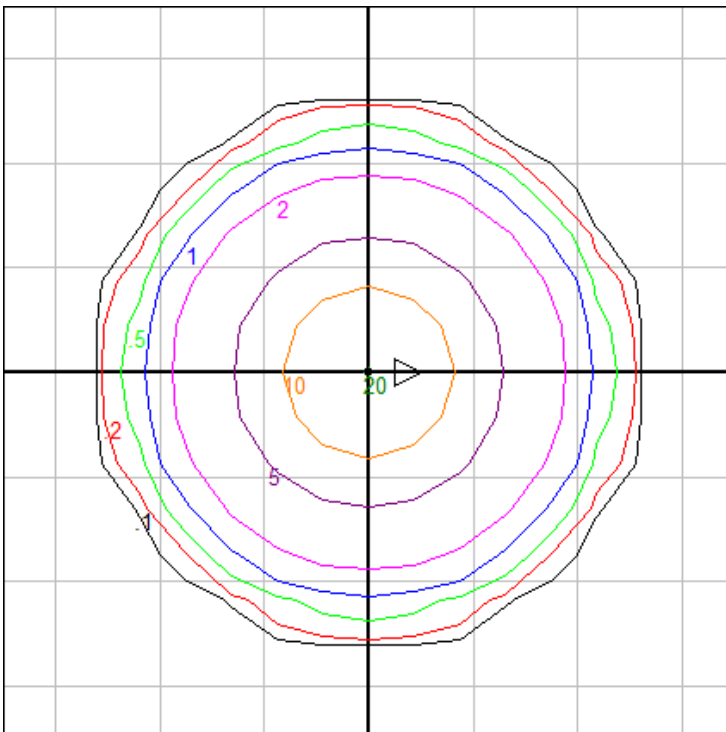


Characteristics

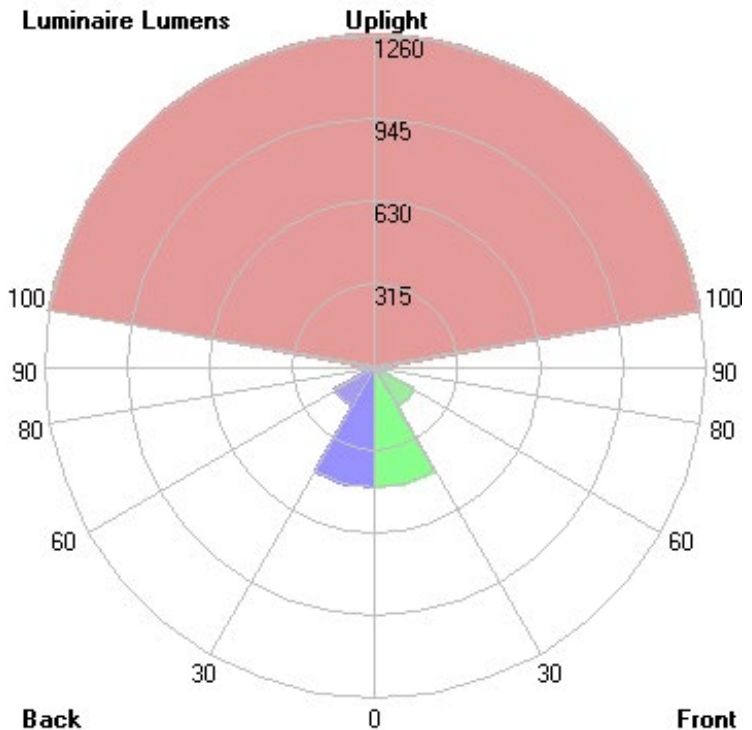
IES Classification	N.A.
Longitudinal Classification	N.A.
Lumens Per Lamp	N.A. (absolute)
Total Lamp Lumens	N.A. (absolute)
Luminaire Lumens	2523
Downward Total Efficiency	N.A.
Total Luminaire Efficiency	N.A.
Luminaire Efficacy Rating (LER)	93
Total Luminaire Watts	27
Ballast Factor	1.00
Upward Waste Light Ratio	0.50
Max. Cd.	2049.194 (0H, 180V)
Max. Cd. (<90 Vert.)	2049.194 (0H, 0V)
Max. Cd. (At 90 Deg. Vert.)	1.182 (0.0%Lum)
Max. Cd. (80 to <90 Deg. Vert.)	1.379 (0.1%Lum)
Cutoff Classification (deprecated)	N.A. (absolute)

Lum. Classification System (LCS)

LCS	Zone	Lumens	%Lamp	%Lum
FL	(0-30)	456.1	N.A.	18.1
FM	(30-60)	172.1	N.A.	6.8
FH	(60-80)	2.0	N.A.	0.1
FVH	(80-90)	0.7	N.A.	0.0
BL	(0-30)	456.1	N.A.	18.1
BM	(30-60)	172.1	N.A.	6.8
BH	(60-80)	2.0	N.A.	0.1
BVH	(80-90)	0.7	N.A.	0.0
UL	(90-100)	1.4	N.A.	0.1
UH	(100-180)	1260.3	N.A.	49.9
Total		2523.5	N.A.	100.0
BUG Rating	B1-U5-G0			



Mounting Height: 10 ft Grid Spacing: 4ft.

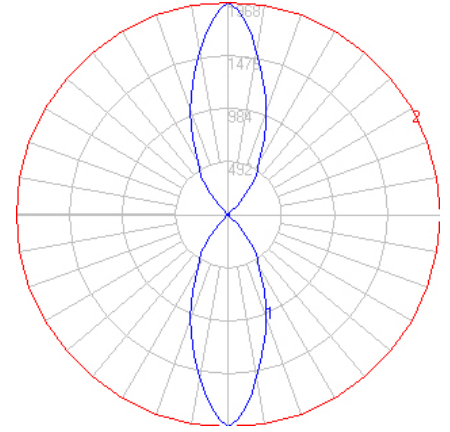


In the interest of product improvement, BEGA reserves the right to make technical changes without notice.

BEGA

File: 50604K27_BEGA_IES.ies

TEST: BE_50604K4
 TEST LAB: BEGA
 DATE: 04/05/2018
 LUMINAIRE: 50 604K27
 LAMP: 23.0W LED

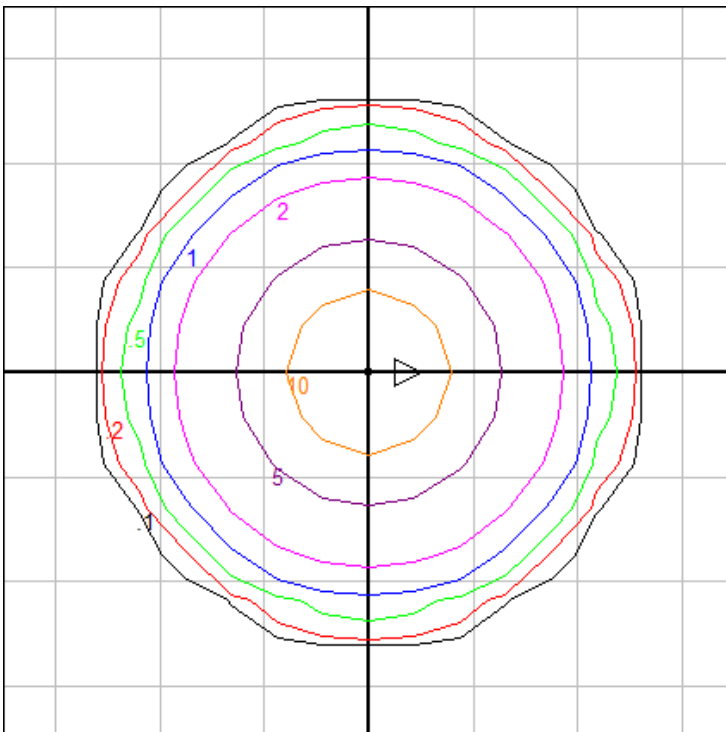


Characteristics

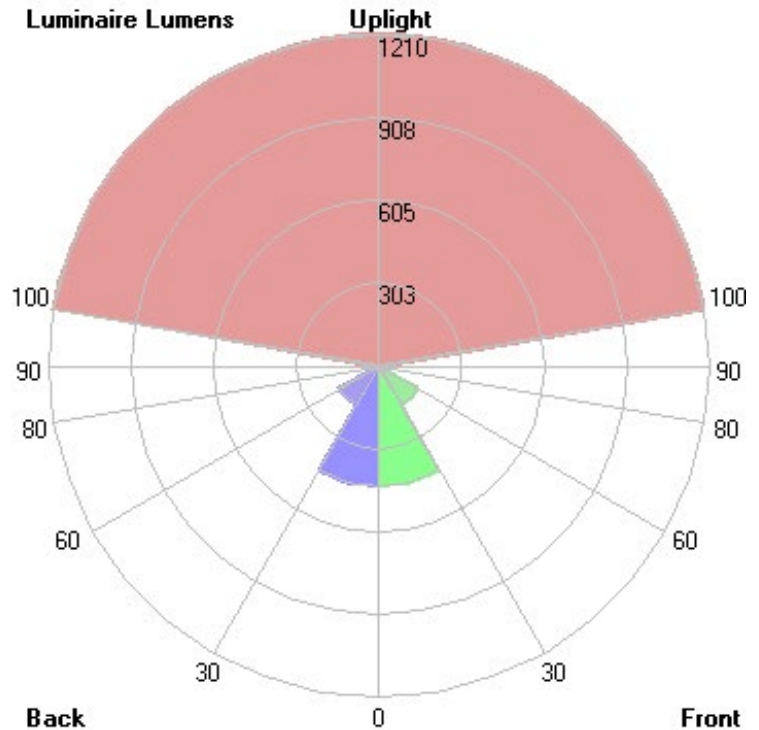
IES Classification	N.A.
Longitudinal Classification	N.A.
Lumens Per Lamp	N.A. (absolute)
Total Lamp Lumens	N.A. (absolute)
Luminaire Lumens	2423
Downward Total Efficiency	N.A.
Total Luminaire Efficiency	N.A.
Luminaire Efficacy Rating (LER)	90
Total Luminaire Watts	27
Ballast Factor	1.00
Upward Waste Light Ratio	0.50
Max. Cd.	1968.058 (0H, 180V)
Max. Cd. (<90 Vert.)	1968.058 (0H, 0V)
Max. Cd. (At 90 Deg. Vert.)	1.135 (0.0%Lum)
Max. Cd. (80 to <90 Deg. Vert.)	1.324 (0.1%Lum)
Cutoff Classification (deprecated)	N.A. (absolute)

Lum. Classification System (LCS)

LCS	Zone	Lumens	%Lamp	%Lum
FL	(0-30)	438.0	N.A.	18.1
FM	(30-60)	165.3	N.A.	6.8
FH	(60-80)	1.9	N.A.	0.1
FVH	(80-90)	0.7	N.A.	0.0
BL	(0-30)	438.0	N.A.	18.1
BM	(30-60)	165.3	N.A.	6.8
BH	(60-80)	1.9	N.A.	0.1
BVH	(80-90)	0.7	N.A.	0.0
UL	(90-100)	1.3	N.A.	0.1
UH	(100-180)	1210.4	N.A.	49.9
Total		2423.5	N.A.	100.0
BUG Rating	B1-U5-G0			



Mounting Height: 10 ft Grid Spacing: 4ft.



In the interest of product improvement, BEGA reserves the right to make technical changes without notice.

BEGA 1000 Bega Way, Carpinteria, CA 93013 (805)684-0533 Fax (805)566-9474 www.bega-us.com © Copyright BEGA-US 2020

07/14/20