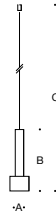


**Tools Required:**

- Medium Phillips screwdriver
- Small Flathead screwdriver
- T10 Torx screwdriver

**Overview:**

LED Watts: 24.5W  
 System Watts: 29.0W  
 Controllability: 0-10V dimmable  
 Weight: 2.9 lbs.



**Dimensions**

- A:** 5-1/2"
- B:** 18"
- C:** 78"



**Notice to Installer:**

1. See page 2 for specific product safety warnings.
2. Select the desired housing material finish by using appropriate code number as suffix.  
 50 587.2 - Velvet Black - Matte aluminum  
 50 587.4 - Velvet Black - Matte brass  
 50 587.6 - Velvet Black - Matte copper
3. Mounts directly onto standard recessed 4" octagonal wiring box (by others).
4. LEDs are high-quality electronic components! Please avoid touching the light output opening of the LED directly during installation.

**Installation: Luminaire**

1. Loosen and lower canopy cover by turning the lock screw located at the base of the canopy counter-clockwise. [Figure 1]
2. Route wiring from luminaire base through circular cutout on mounting kit (provided).
3. Shorten pendant cable length as needed from canopy end.
4. Make connections from driver to supply wiring: [Figure 2]  
 MAIN VOLTAGE SUPPLY WIRE TO BLACK DRIVER WIRE(S);  
 NEUTRAL (COMMON SUPPLY WIRE TO WHITE DRIVER WIRE(S);  
 GREEN GROUND WIRE TO GREEN DRIVER WIRE(S).  
 Dimming (if applicable):  
 DIMMING CONTROL WIRE (+) TO POSITIVE PURPLE DRIVER DIM CONTROL WIRE  
 DIMMING CONTROL WIRE (-) TO NEGATIVE GREY DRIVER DIM CONTROL WIRE
5. Attach mounting kit onto 4" octagonal wiring box using [2] (provided) Phillips head screws. [Figure 2]
6. Align and attach pendant base to mounting kit using [2] (provided) coupling nuts. [Figure 3 and 4]
7. Reattached canopy cover by turning lock screw clockwise while pressing canopy cover firmly to base. [Figure 5]

**Installation: Luminaire - Cable Shortening (as needed)**

1. Cable can be shortened on canopy side only.
2. Undo wiring splices and detach the ground wire.
3. Remove luminaire from wiring box.
4. Loosen (2X) torx screws located on lower cord grip. [Figure 6]
5. Loosen upper cord grip and pull wire through to desired length.
6. Cut away excess cable to using proper cutting tools.
7. Re-tighten both collars to secure cord.
8. See *Installation: Luminaire* section above for completing installation.

**WARNING:**

FAILURE TO FOLLOW THESE INSTALLATION INSTRUCTIONS CAN CAUSE FIXTURE TO FAIL. DO NOT SHORTEN THE CABLE ON THE FIXTURE SIDE. DO NOT REMOVE OR TAMPER WITH SAFETY HARDWARE ON FIXTURE SIDE.

**Accessories**

Please refer to the appropriate accessory installation sheet for further instruction when applicable.

(Generic Models)

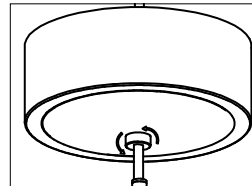


Figure 1: Canopy Removal

Canopy Base Cover

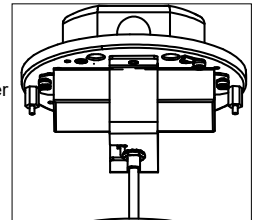


Figure 4: Base Mounting [2/2]

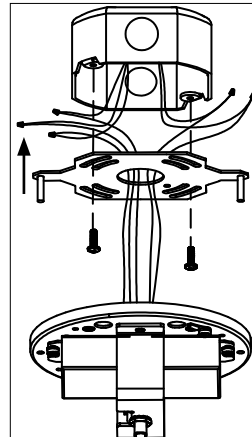


Figure 2: Mounting Kit (Generic)

Mounting Kit (Provided)

Canopy Base

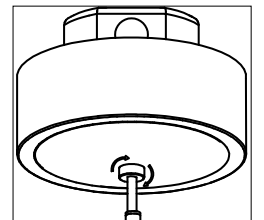


Figure 5: Canopy Mounting

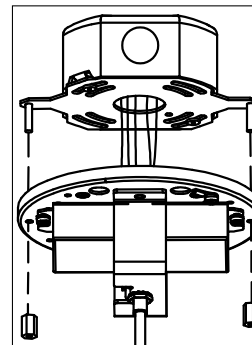


Figure 3: Base Mounting [1/2]

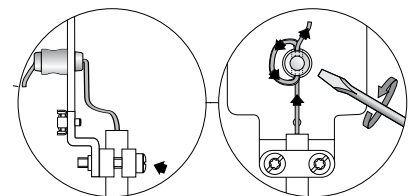


Figure 6: Cable Shortening

**Maintenance:**

Clean regularly with solvent-free cleaner removing dirt and debris. Do not use high pressure cleaners.

**Replacement Parts**

See label inside of fixture for LED replacement part number.

Consult factory for all other replacement components.

**Product Safety Warnings:**

**THIS PRODUCT MUST BE INSTALLED IN ACCORDANCE WITH THE APPLICABLE INSTALLATION CODE BY A PERSON FAMILIAR WITH THE CONSTRUCTION AND OPERATION OF THE PRODUCT AND THE HAZARDS INVOLVED. SUITABLE FOR DAMP LOCATIONS. MIN 90°C SUPPLY CONDUCTORS.**

**CE PRODUIT DOIT ÊTRE INSTALLÉ SELON LE CODE D'INSTALLATION PERTINENT, PAR UNE PERSONNE QUI CONNAÎT BIEN LE PRODUIT ET SON FONCTIONNEMENT AINSI QUE LES RISQUES INHÉRENTS. CONVIENT AUX EMPLACEMENTS HUMIDE.**

**LES FILS D'ALIMENTATION 90°C MIN.**