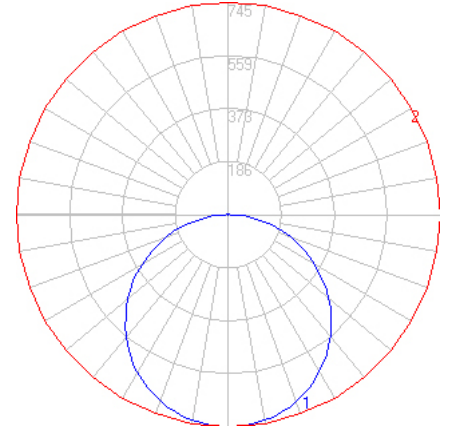


BEGA

File: 50525K4_BEGA_IES.ies

TEST: BE_50525K4
 TEST LAB: BEGA
 DATE: 08/07/2018
 LUMINAIRE: 50 525K4
 LAMP: 28.1W LED

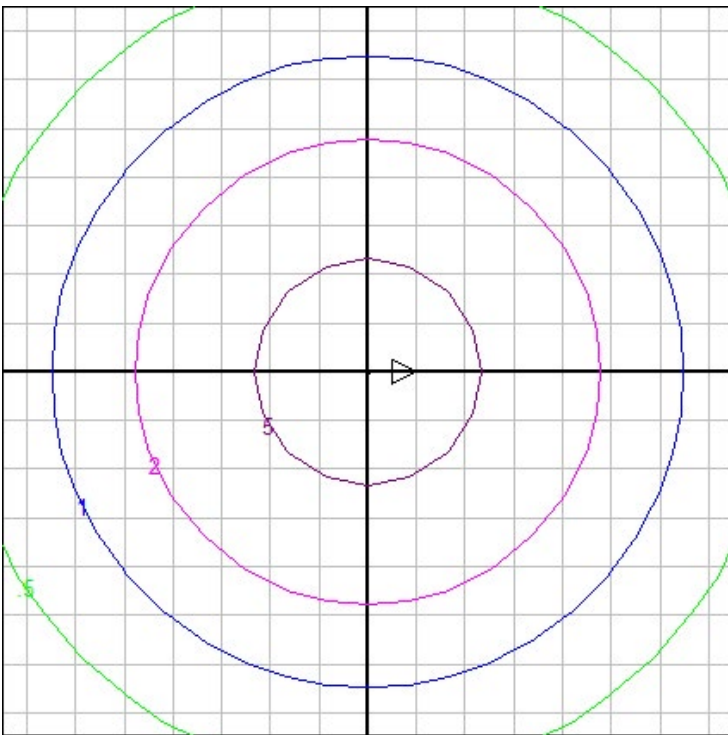


Characteristics

Lumens Per Lamp	N.A. (absolute)
Total Lamp Lumens	N.A. (absolute)
Luminaire Lumens	2256
Total Luminaire Efficiency	N.A.
Luminaire Efficacy Rating (LER)	68
Total Luminaire Watts	33
Ballast Factor	1.00
CIE Type	Direct
Spacing Criterion (0-180)	1.28
Spacing Criterion (90-270)	1.28
Spacing Criterion (Diagonal)	1.40
Basic Luminous Shape	Circular w/ Sides
Luminous Length (0-180)	0.00 ft
Luminous Width (90-270)	0.95 ft (Diameter)
Luminous Height	0.02 ft

Zonal Lumen Summary

Zone	Lumens
0-10	70.65
10-20	203.19
20-30	309.70
30-40	376.20
40-50	394.51
50-60	364.12
60-70	289.88
70-80	182.45
80-90	61.33
90-100	3.35
100-110	0.00
110-120	0.00
120-130	0.00
130-140	0.00
140-150	0.00
150-160	0.05
160-170	0.24
170-180	0.10



Mounting Height: 10 ft.

Grid Spacing: 2 ft.

In the interest of product improvement, BEGA reserves the right to make technical changes without notice.

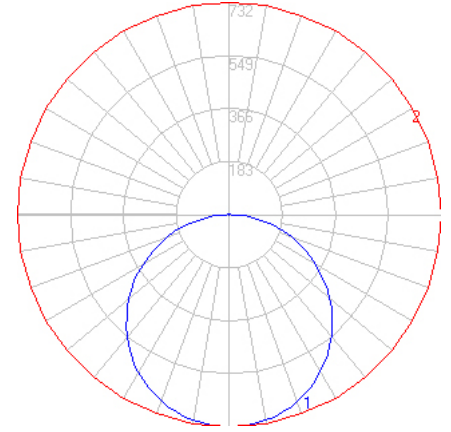
BEGA 1000 Bega Way, Carpinteria, CA 93013 (805)684-0533 Fax (805)566-9474 www.bega-us.com © Copyright BEGA-US 2020

05/05/20

BEGA

File: 50525K35_BEGA_IES.ies

TEST: BE_50525K4
 TEST LAB: BEGA
 DATE: 08/07/2018
 LUMINAIRE: 50 525K35
 LAMP: 28.1W LED

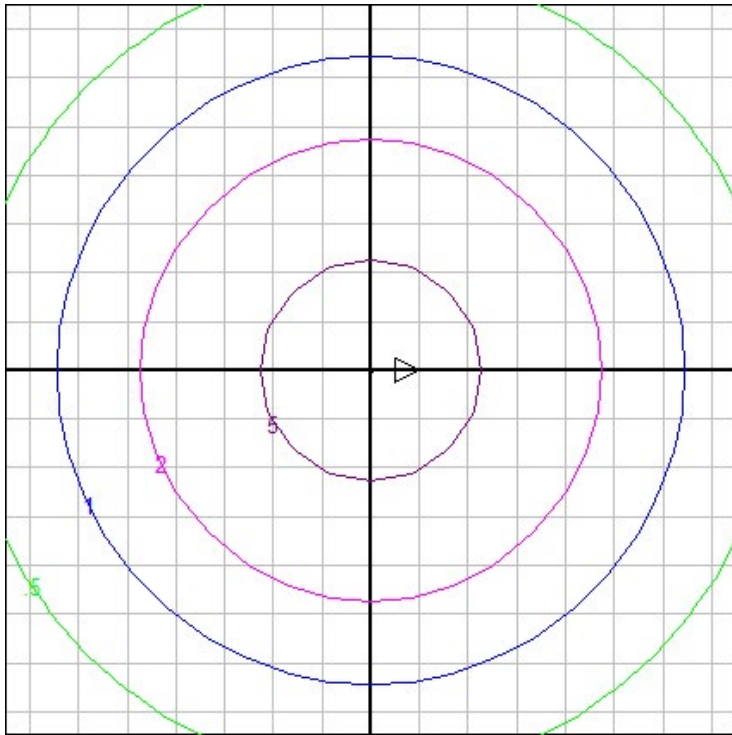


Characteristics

Lumens Per Lamp	N.A. (absolute)
Total Lamp Lumens	N.A. (absolute)
Luminaire Lumens	2215
Total Luminaire Efficiency	N.A.
Luminaire Efficacy Rating (LER)	67
Total Luminaire Watts	33
Ballast Factor	1.00
CIE Type	Direct
Spacing Criterion (0-180)	1.28
Spacing Criterion (90-270)	1.28
Spacing Criterion (Diagonal)	1.40
Basic Luminous Shape	Circular w/ Sides
Luminous Length (0-180)	0.00 ft
Luminous Width (90-270)	0.95 ft (Diameter)
Luminous Height	0.02 ft

Zonal Lumen Summary

Zone	Lumens
0-10	69.37
10-20	199.53
20-30	304.12
30-40	369.43
40-50	387.41
50-60	357.57
60-70	284.66
70-80	179.16
80-90	60.22
90-100	3.29
100-110	0.00
110-120	0.00
120-130	0.00
130-140	0.00
140-150	0.00
150-160	0.05
160-170	0.23
170-180	0.10



Mounting Height: 10 ft.

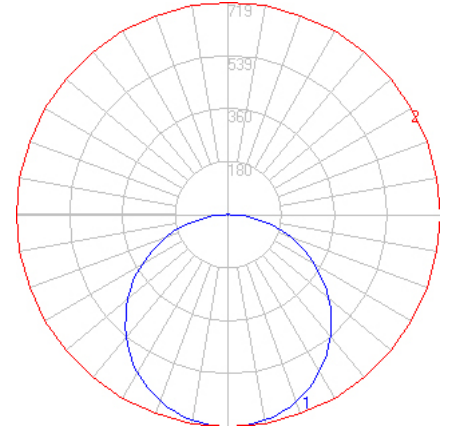
Grid Spacing: 2 ft.

In the interest of product improvement, BEGA reserves the right to make technical changes without notice.

BEGA

File: 50525K3_BEGA_IES.ies

TEST: BE_50525K4
 TEST LAB: BEGA
 DATE: 08/07/2018
 LUMINAIRE: 50 525K3
 LAMP: 28.1W LED

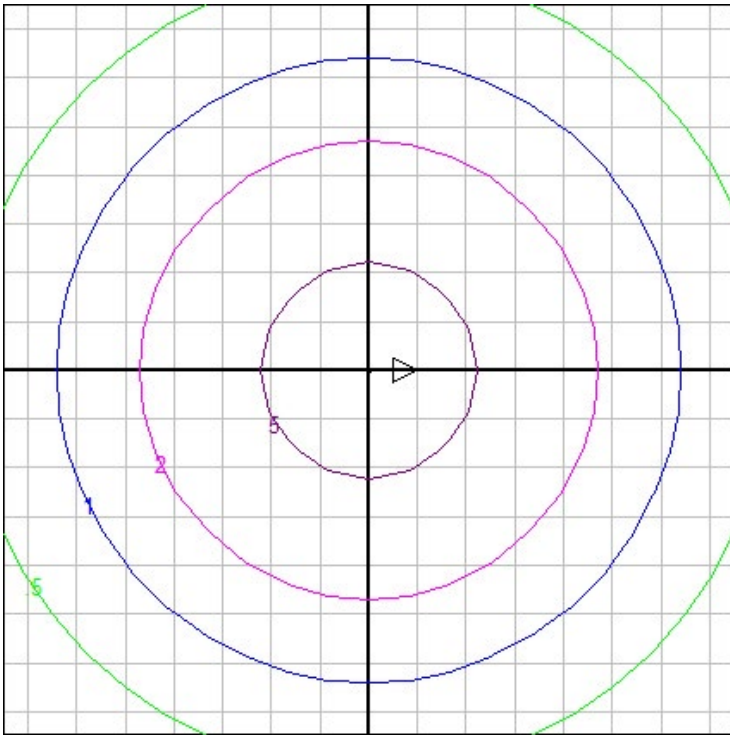


Characteristics

Lumens Per Lamp	N.A. (absolute)
Total Lamp Lumens	N.A. (absolute)
Luminaire Lumens	2177
Total Luminaire Efficiency	N.A.
Luminaire Efficacy Rating (LER)	66
Total Luminaire Watts	33
Ballast Factor	1.00
CIE Type	Direct
Spacing Criterion (0-180)	1.28
Spacing Criterion (90-270)	1.28
Spacing Criterion (Diagonal)	1.40
Basic Luminous Shape	Circular w/ Sides
Luminous Length (0-180)	0.00 ft
Luminous Width (90-270)	0.95 ft (Diameter)
Luminous Height	0.02 ft

Zonal Lumen Summary

Zone	Lumens
0-10	68.17
10-20	196.07
20-30	298.86
30-40	363.03
40-50	380.71
50-60	351.38
60-70	279.73
70-80	176.06
80-90	59.18
90-100	3.23
100-110	0.00
110-120	0.00
120-130	0.00
130-140	0.00
140-150	0.00
150-160	0.05
160-170	0.23
170-180	0.10



Mounting Height: 10 ft.

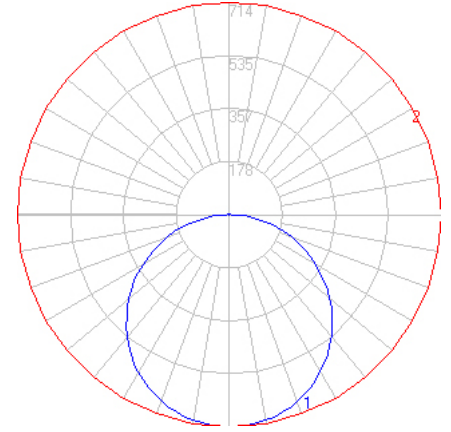
Grid Spacing: 2 ft.

In the interest of product improvement, BEGA reserves the right to make technical changes without notice.

BEGA

File: 50525K27_BEGA_IES.ies

TEST: BE_50525K4
 TEST LAB: BEGA
 DATE: 08/07/2018
 LUMINAIRE: 50 525K27
 LAMP: 28.1W LED

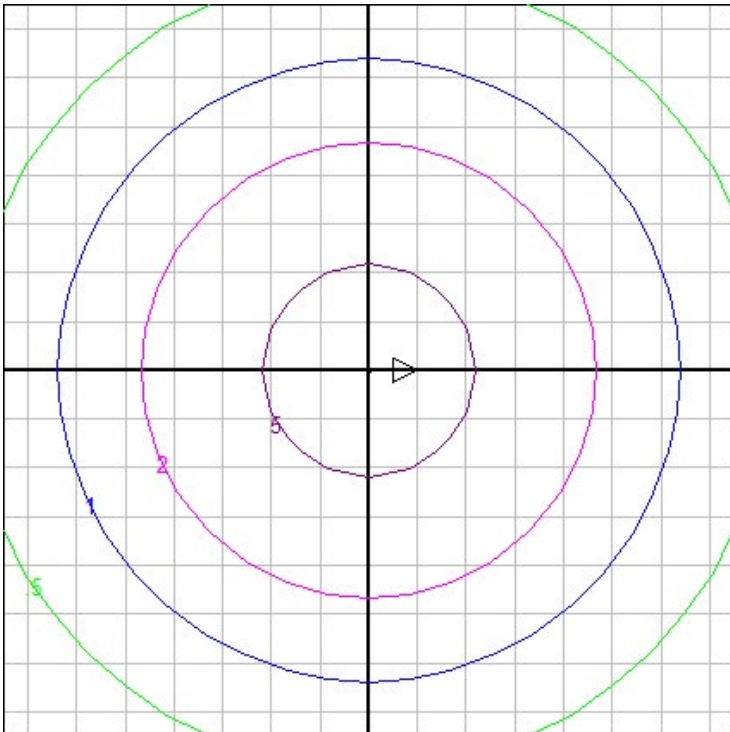


Characteristics

Lumens Per Lamp	N.A. (absolute)
Total Lamp Lumens	N.A. (absolute)
Luminaire Lumens	2161
Total Luminaire Efficiency	N.A.
Luminaire Efficacy Rating (LER)	65
Total Luminaire Watts	33
Ballast Factor	1.00
CIE Type	Direct
Spacing Criterion (0-180)	1.28
Spacing Criterion (90-270)	1.28
Spacing Criterion (Diagonal)	1.40
Basic Luminous Shape	Circular w/ Sides
Luminous Length (0-180)	0.00 ft
Luminous Width (90-270)	0.95 ft (Diameter)
Luminous Height	0.02 ft

Zonal Lumen Summary

Zone	Lumens
0-10	67.68
10-20	194.65
20-30	296.69
30-40	360.40
40-50	377.94
50-60	348.83
60-70	277.70
70-80	174.78
80-90	58.75
90-100	3.21
100-110	0.00
110-120	0.00
120-130	0.00
130-140	0.00
140-150	0.00
150-160	0.05
160-170	0.23
170-180	0.10



Mounting Height: 10 ft.

Grid Spacing: 2 ft.

In the interest of product improvement, BEGA reserves the right to make technical changes without notice.