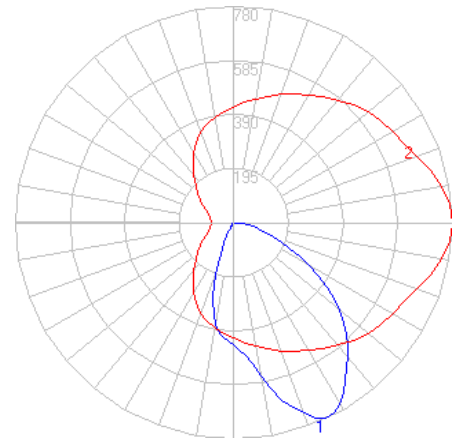


BEGA

Photometric Filename: 50395K4.IES

TEST: BE_50395K4
 TEST LAB: BEGA
 DATE: 6/26/2018
 LUMINAIRE: 50 395K4
 LAMP: 8.1W LED

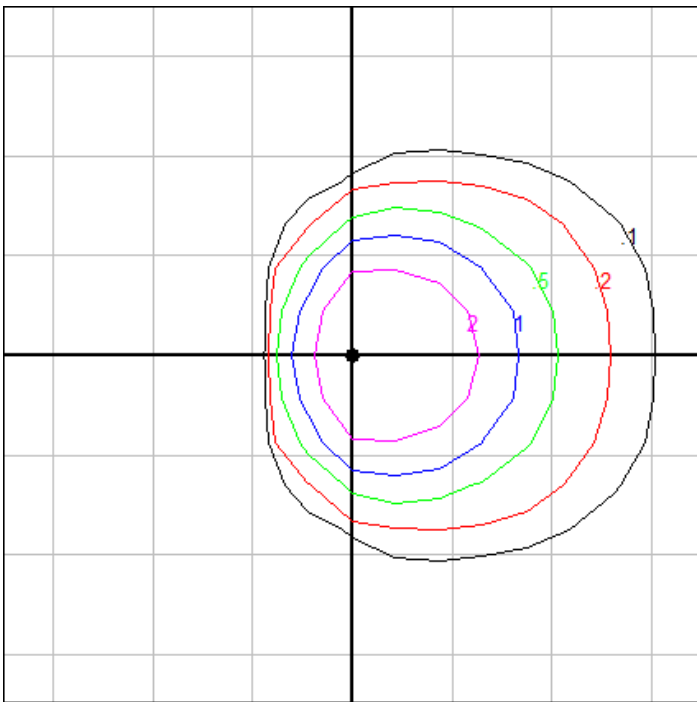


Characteristics

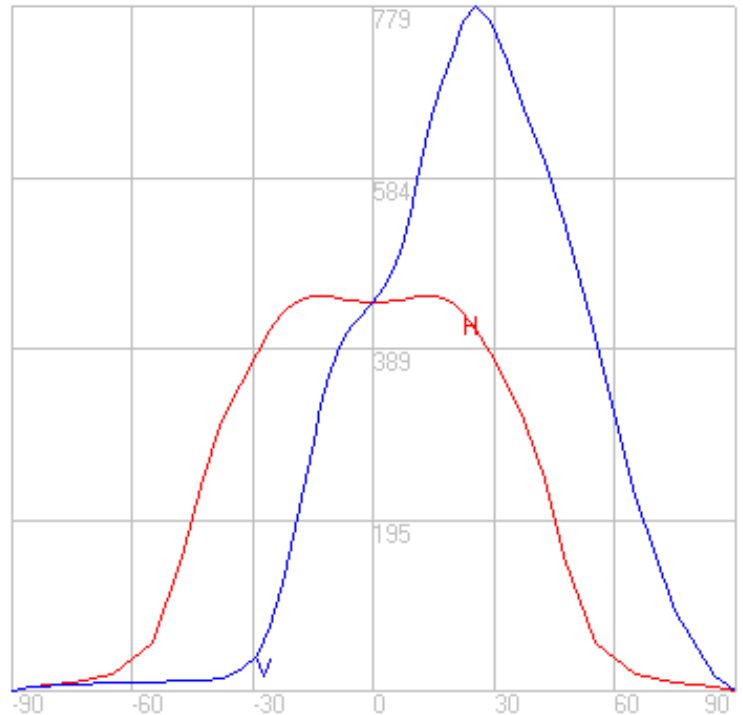
Lumens Per Lamp	N.A. (absolute)
Total Lamp Lumens	N.A. (absolute)
Luminaire Lumens	969
Total Luminaire Efficiency	N.A.
Luminaire Efficacy Rating (LER)	97
Total Luminaire Watts	10
Ballast Factor	1.00
CIE Type	Direct
Spacing Criterion (0-180)	1.92
Spacing Criterion (90-270)	1.26
Spacing Criterion (Diagonal)	1.22
Basic Luminous Shape	Circular
Luminous Length (0-180)	0.00 ft
Luminous Width (90-270)	0.11 ft (Diameter)
Luminous Height	0.00 ft

Zonal Lumen Summary

Zone	Lumens
0-10	43.05
10-20	130.24
20-30	186.69
30-40	196.00
40-50	178.45
50-60	125.95
60-70	68.98
70-80	30.87
80-90	8.45
90-100	0.00
100-110	0.00
110-120	0.00
120-130	0.00
130-140	0.00
140-150	0.00
150-160	0.00
160-170	0.00
170-180	0.00



Mounting Height = 10 ft. AFF Grid Spacing = 8 ft.

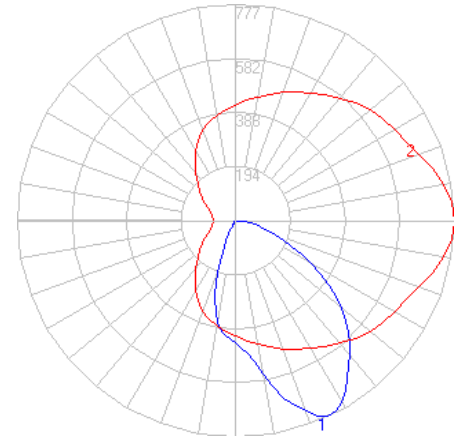


In the interest of product improvement, BEGA reserves the right to make technical changes without notice.

BEGA

Photometric Filename: 50395K35.IES

TEST: BE_50395K4
 TEST LAB: BEGA
 DATE: 6/26/2018
 LUMINAIRE: 50 395K35
 LAMP: 8.1W LED

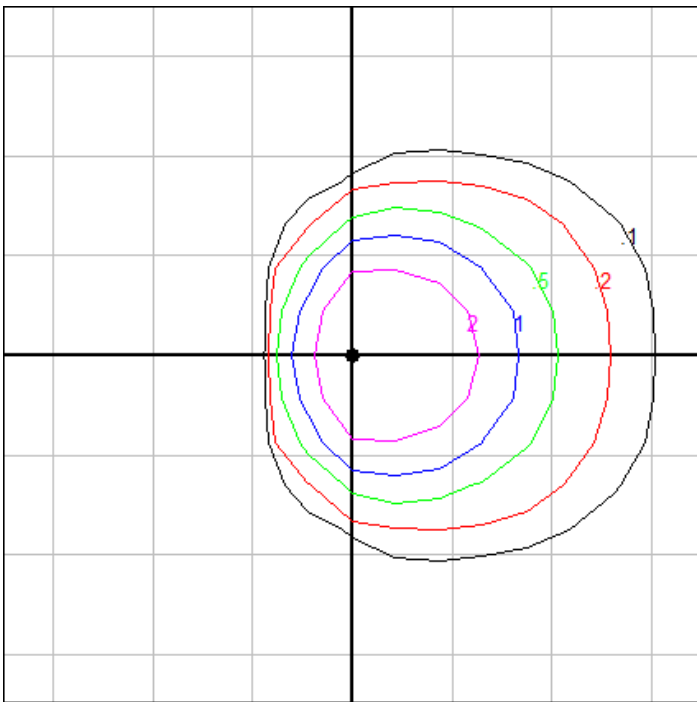


Characteristics

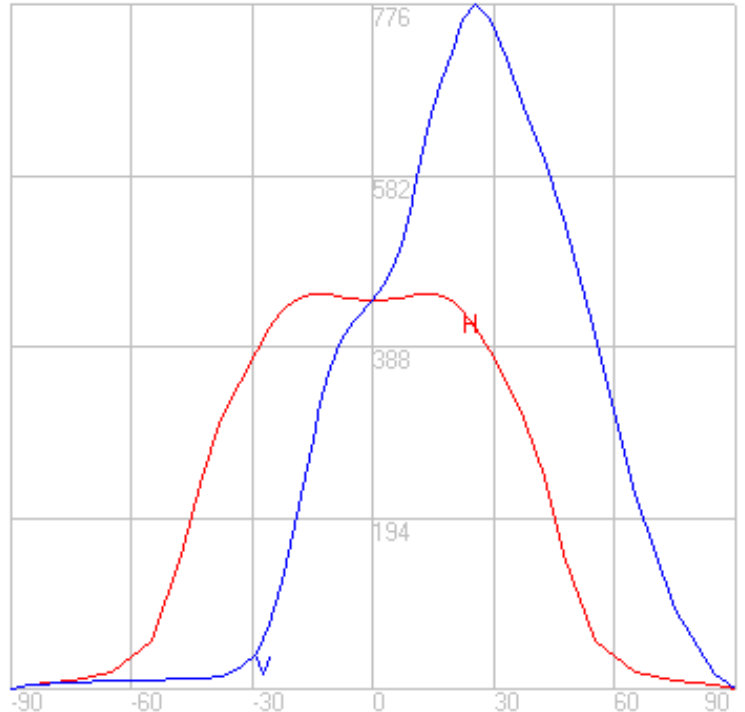
Lumens Per Lamp	N.A. (absolute)
Total Lamp Lumens	N.A. (absolute)
Luminaire Lumens	965
Total Luminaire Efficiency	N.A.
Luminaire Efficacy Rating (LER)	96
Total Luminaire Watts	10
Ballast Factor	1.00
CIE Type	Direct
Spacing Criterion (0-180)	1.92
Spacing Criterion (90-270)	1.26
Spacing Criterion (Diagonal)	1.22
Basic Luminous Shape	Circular
Luminous Length (0-180)	0.00 ft
Luminous Width (90-270)	0.11 ft (Diameter)
Luminous Height	0.00 ft

Zonal Lumen Summary

Zone	Lumens
0-10	42.88
10-20	129.72
20-30	185.94
30-40	195.21
40-50	177.74
50-60	125.45
60-70	68.71
70-80	30.75
80-90	8.42
90-100	0.00
100-110	0.00
110-120	0.00
120-130	0.00
130-140	0.00
140-150	0.00
150-160	0.00
160-170	0.00
170-180	0.00



Mounting Height = 10 ft. AFF Grid Spacing = 8 ft.

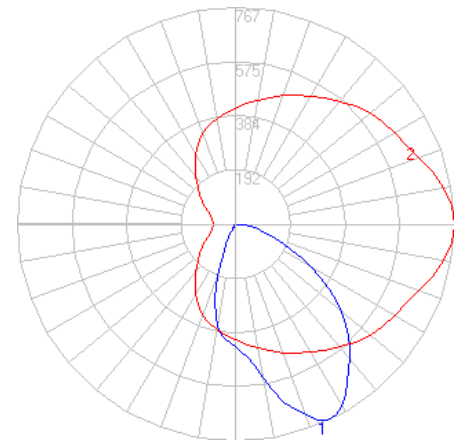


In the interest of product improvement, BEGA reserves the right to make technical changes without notice.

BEGA

Photometric Filename: 50395K3.IES

TEST: BE_50395K4
 TEST LAB: BEGA
 DATE: 6/26/2018
 LUMINAIRE: 50 395K3
 LAMP: 8.1W LED

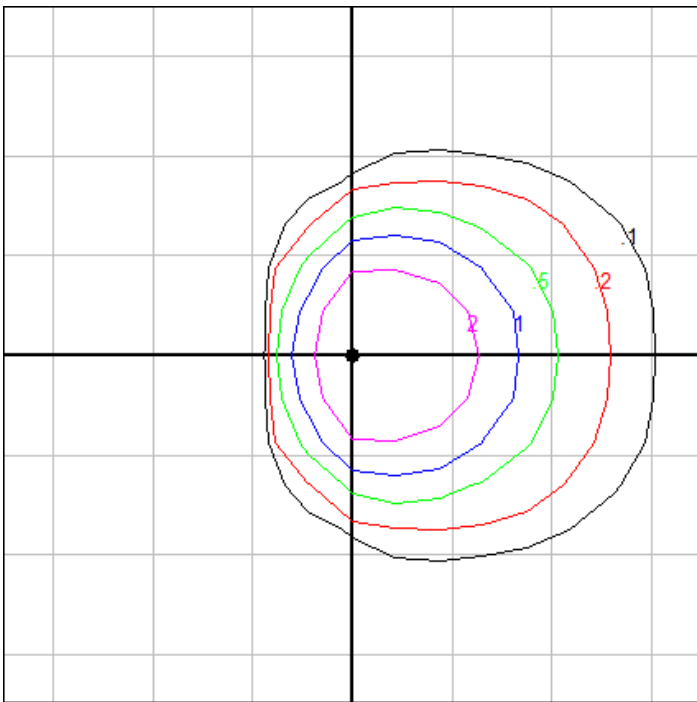


Characteristics

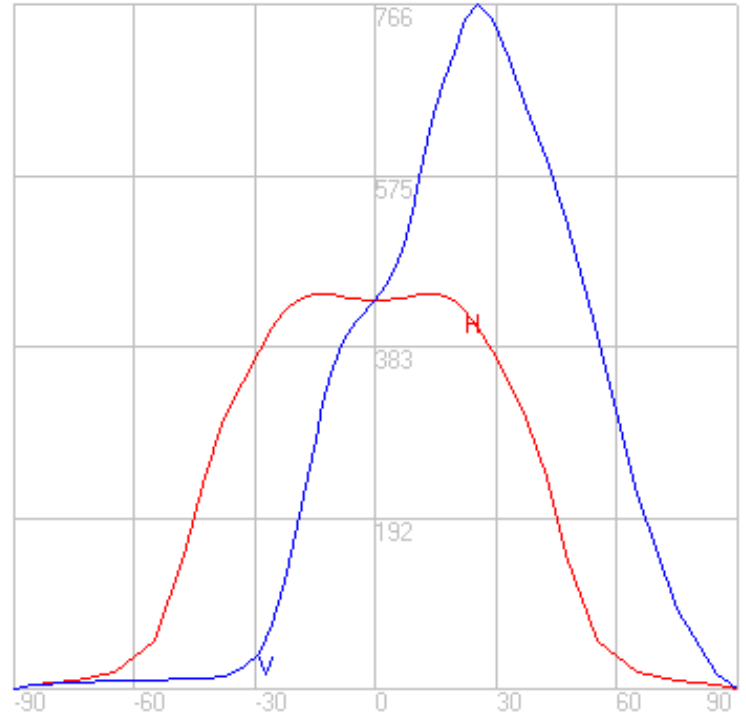
Lumens Per Lamp	N.A. (absolute)
Total Lamp Lumens	N.A. (absolute)
Luminaire Lumens	953
Total Luminaire Efficiency	N.A.
Luminaire Efficacy Rating (LER)	95
Total Luminaire Watts	10
Ballast Factor	1.00
CIE Type	Direct
Spacing Criterion (0-180)	1.92
Spacing Criterion (90-270)	1.26
Spacing Criterion (Diagonal)	1.22
Basic Luminous Shape	Circular
Luminous Length (0-180)	0.00 ft
Luminous Width (90-270)	0.11 ft (Diameter)
Luminous Height	0.00 ft

Zonal Lumen Summary

Zone	Lumens
0-10	42.36
10-20	128.16
20-30	183.70
30-40	192.86
40-50	175.60
50-60	123.93
60-70	67.88
70-80	30.38
80-90	8.32
90-100	0.00
100-110	0.00
110-120	0.00
120-130	0.00
130-140	0.00
140-150	0.00
150-160	0.00
160-170	0.00
170-180	0.00



Mounting Height = 10 ft. AFF Grid Spacing = 8 ft.

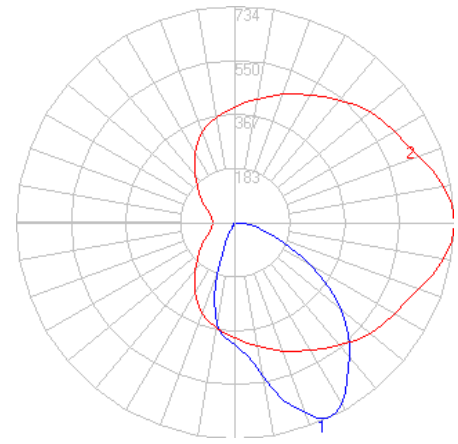


In the interest of product improvement, BEGA reserves the right to make technical changes without notice.

BEGA

Photometric Filename: 50395K27.IES

TEST: BE_50395K4
 TEST LAB: BEGA
 DATE: 6/26/2018
 LUMINAIRE: 50 395K27
 LAMP: 8.1W LED

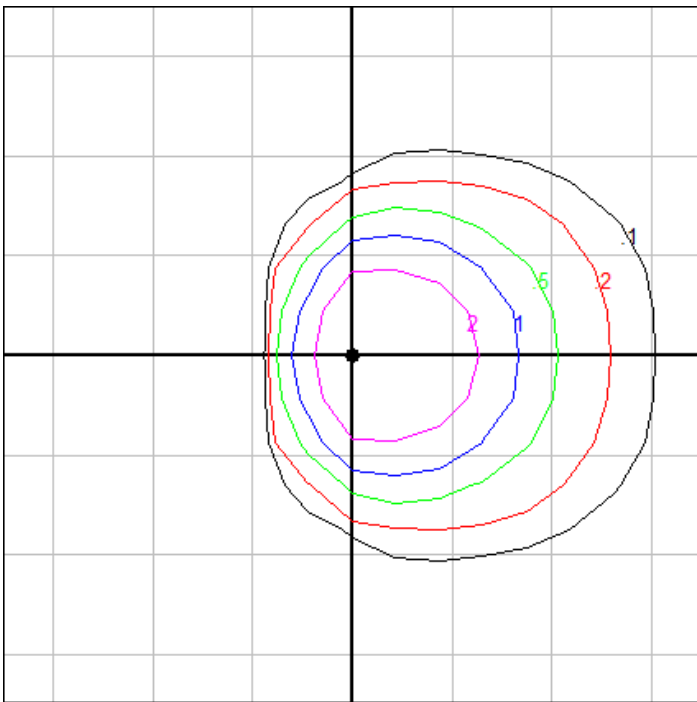


Characteristics

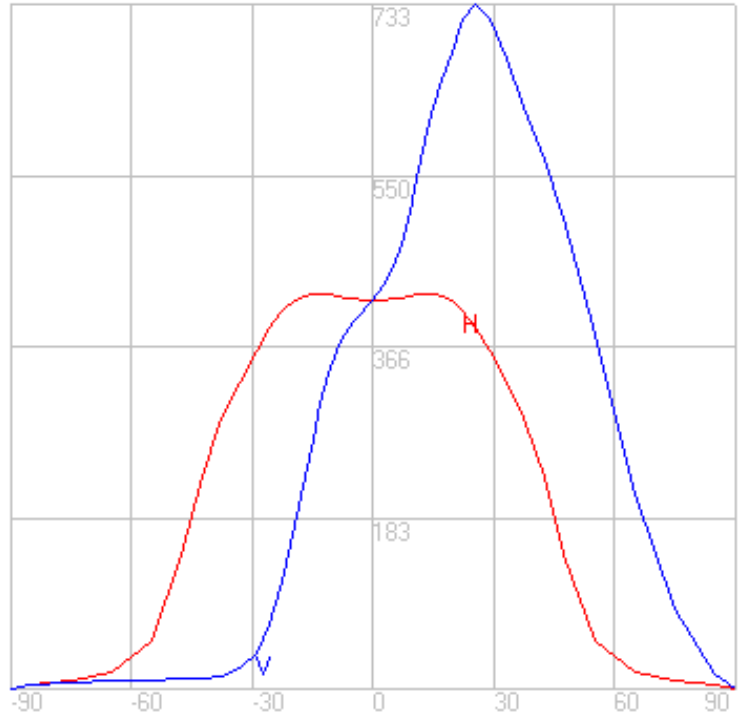
Lumens Per Lamp	N.A. (absolute)
Total Lamp Lumens	N.A. (absolute)
Luminaire Lumens	912
Total Luminaire Efficiency	N.A.
Luminaire Efficacy Rating (LER)	91
Total Luminaire Watts	10
Ballast Factor	1.00
CIE Type	Direct
Spacing Criterion (0-180)	1.92
Spacing Criterion (90-270)	1.26
Spacing Criterion (Diagonal)	1.22
Basic Luminous Shape	Circular
Luminous Length (0-180)	0.00 ft
Luminous Width (90-270)	0.11 ft (Diameter)
Luminous Height	0.00 ft

Zonal Lumen Summary

Zone	Lumens
0-10	40.51
10-20	122.56
20-30	175.68
30-40	184.43
40-50	167.93
50-60	118.52
60-70	64.91
70-80	29.05
80-90	7.95
90-100	0.00
100-110	0.00
110-120	0.00
120-130	0.00
130-140	0.00
140-150	0.00
150-160	0.00
160-170	0.00
170-180	0.00



Mounting Height = 10 ft. AFF Grid Spacing = 8 ft.



In the interest of product improvement, BEGA reserves the right to make technical changes without notice.