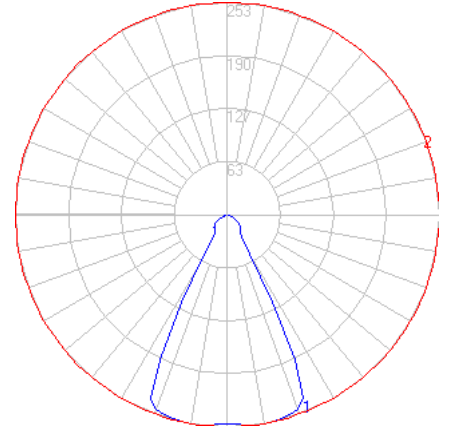


BEGA

Photometric Filename: 50362-2_PRE.IES

TEST: N/A*
 TEST LAB: BEGA
 DATE: 3/23/2016
 LUMINAIRE: 50 362.2 (Preliminary)
 LAMP: 6.3W LED



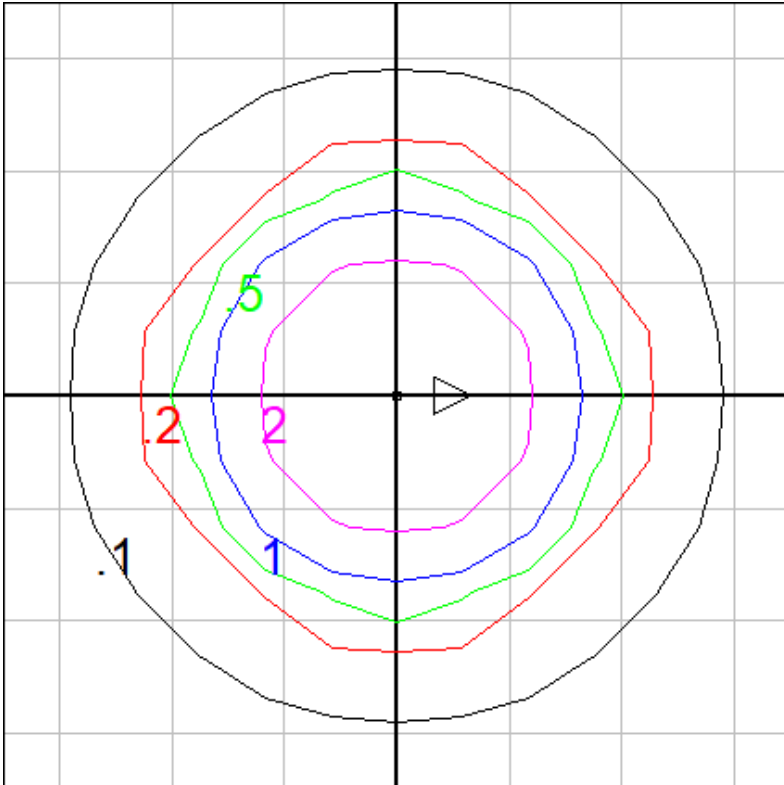
*Preliminary Data

Characteristics

| | |
|---------------------------------|-----------------|
| Lumens Per Lamp | N.A. (absolute) |
| Total Lamp Lumens | N.A. (absolute) |
| Luminaire Lumens | 231 |
| Total Luminaire Efficiency | N.A. |
| Luminaire Efficacy Rating (LER) | 22 |
| Total Luminaire Watts | 10.6 |
| Ballast Factor | 1.00 |
| CIE Type | Direct |
| Spacing Criterion (0-180) | 0.98 |
| Spacing Criterion (90-270) | 0.98 |
| Spacing Criterion (Diagonal) | 0.78 |
| Basic Luminous Shape | Rectangular |
| Luminous Length (0-180) | 0.34 ft |
| Luminous Width (90-270) | 0.34 ft |
| Luminous Height | 0.00 ft |

Zonal Lumen Summary

| Zone | Lumens |
|---------|--------|
| 0-10 | 24.10 |
| 10-20 | 71.28 |
| 20-30 | 77.87 |
| 30-40 | 18.96 |
| 40-50 | 17.10 |
| 50-60 | 13.31 |
| 60-70 | 5.67 |
| 70-80 | 2.50 |
| 80-90 | 0.59 |
| 90-100 | 0.00 |
| 100-110 | 0.00 |
| 110-120 | 0.00 |
| 120-130 | 0.00 |
| 130-140 | 0.00 |
| 140-150 | 0.00 |
| 150-160 | 0.00 |
| 160-170 | 0.00 |
| 170-180 | 0.00 |



Mounting Height (AFF) = 10 ft.

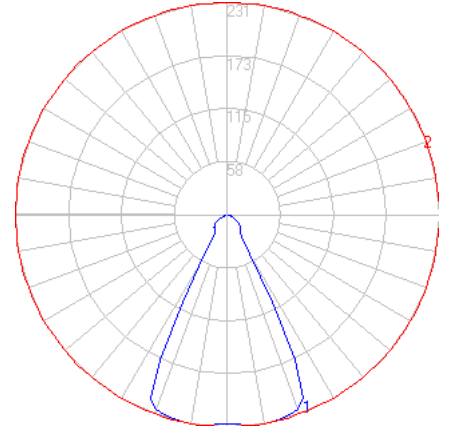
Grid Spacing = 3 ft.

In the interest of product improvement, BEGA reserves the right to make technical changes without notice.

BEGA

Photometric Filename: 50362-4_PRE.IES

TEST: N/A*
 TEST LAB: BEGA
 DATE: 3/23/2016
 LUMINAIRE: 50 362.4 (Preliminary)
 LAMP: 6.3W LED



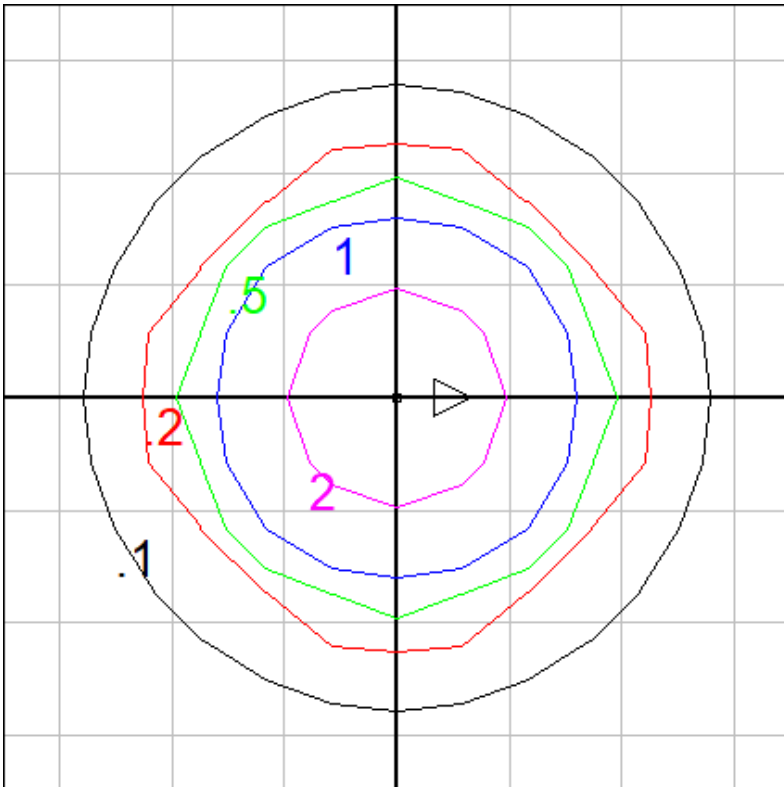
*Preliminary Data

Characteristics

| | |
|---------------------------------|-----------------|
| Lumens Per Lamp | N.A. (absolute) |
| Total Lamp Lumens | N.A. (absolute) |
| Luminaire Lumens | 211 |
| Total Luminaire Efficiency | N.A. |
| Luminaire Efficacy Rating (LER) | 21 |
| Total Luminaire Watts | 10 |
| Ballast Factor | 1.00 |
| CIE Type | Direct |
| Spacing Criterion (0-180) | 0.98 |
| Spacing Criterion (90-270) | 0.98 |
| Spacing Criterion (Diagonal) | 0.78 |
| Basic Luminous Shape | Rectangular |
| Luminous Length (0-180) | 0.34 ft |
| Luminous Width (90-270) | 0.34 ft |
| Luminous Height | 0.00 ft |

Zonal Lumen Summary

| Zone | Lumens |
|---------|--------|
| 0-10 | 21.94 |
| 10-20 | 64.89 |
| 20-30 | 70.88 |
| 30-40 | 17.26 |
| 40-50 | 15.57 |
| 50-60 | 12.11 |
| 60-70 | 5.14 |
| 70-80 | 2.27 |
| 80-90 | 0.54 |
| 90-100 | 0.00 |
| 100-110 | 0.00 |
| 110-120 | 0.00 |
| 120-130 | 0.00 |
| 130-140 | 0.00 |
| 140-150 | 0.00 |
| 150-160 | 0.00 |
| 160-170 | 0.00 |
| 170-180 | 0.00 |



Mounting Height (AFF) = 10 ft.

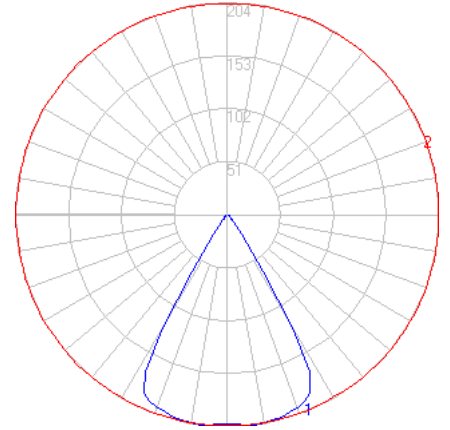
Grid Spacing = 3 ft.

In the interest of product improvement, BEGA reserves the right to make technical changes without notice.

BEGA

Photometric Filename: 50362-6.IES

TEST: N/A
 TEST LAB: BEGA
 DATE: 7/27/2016
 LUMINAIRE: 50 362.6
 LAMP: 6.3W LED

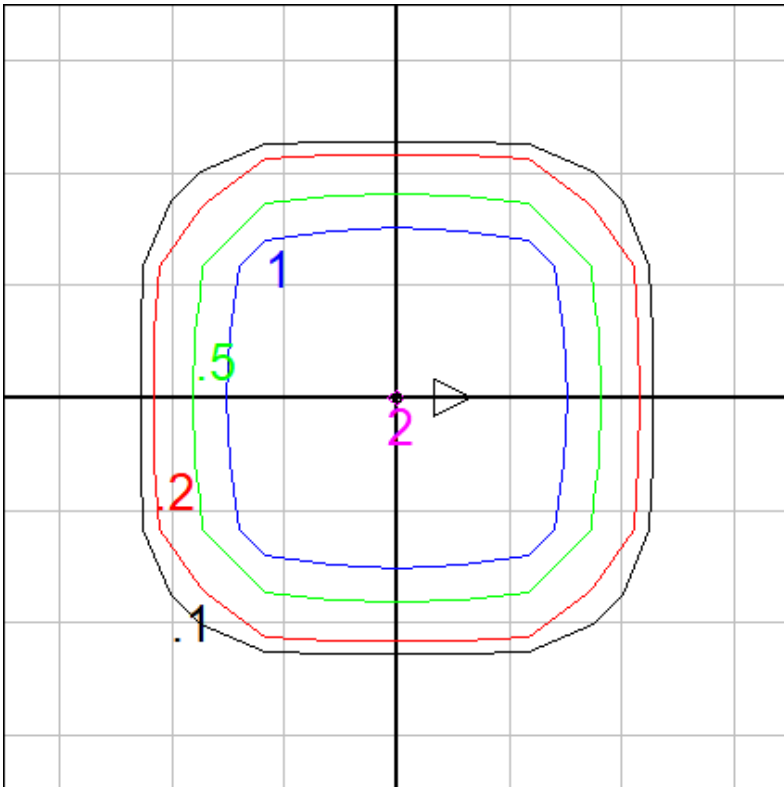


Characteristics

| | |
|---------------------------------|-----------------|
| Lumens Per Lamp | N.A. (absolute) |
| Total Lamp Lumens | N.A. (absolute) |
| Luminaire Lumens | 181 |
| Total Luminaire Efficiency | N.A. |
| Luminaire Efficacy Rating (LER) | 18 |
| Total Luminaire Watts | 10 |
| Ballast Factor | 1.00 |
| CIE Type | Direct |
| Spacing Criterion (0-180) | 0.96 |
| Spacing Criterion (90-270) | 0.96 |
| Spacing Criterion (Diagonal) | 0.96 |
| Basic Luminous Shape | Rectangular |
| Luminous Length (0-180) | 0.34 ft |
| Luminous Width (90-270) | 0.34 ft |
| Luminous Height | 0.00 ft |

Zonal Lumen Summary

| Zone | Lumens |
|---------|--------|
| 0-10 | 19.35 |
| 10-20 | 56.60 |
| 20-30 | 72.36 |
| 30-40 | 18.41 |
| 40-50 | 5.44 |
| 50-60 | 4.85 |
| 60-70 | 2.91 |
| 70-80 | 1.25 |
| 80-90 | 0.26 |
| 90-100 | 0.00 |
| 100-110 | 0.00 |
| 110-120 | 0.00 |
| 120-130 | 0.00 |
| 130-140 | 0.00 |
| 140-150 | 0.00 |
| 150-160 | 0.00 |
| 160-170 | 0.00 |
| 170-180 | 0.00 |



Mounting Height (AFF) = 10 ft.

Grid Spacing = 3 ft.

In the interest of product improvement, BEGA reserves the right to make technical changes without notice.