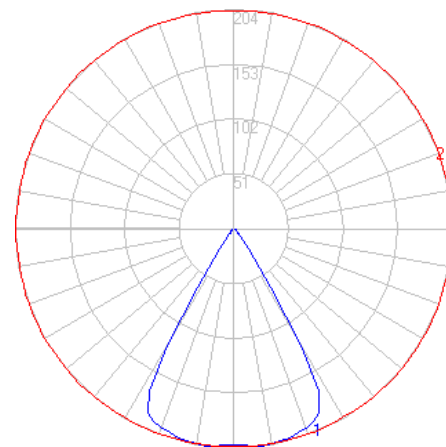


# BEGA

Photometric Filename: 50185-6.IES

TEST: BE\_50185  
 TEST LAB: BEGA  
 DATE: 7/27/2016  
 LUMINAIRE: 50 185.6  
 LAMP: 6.3W LED

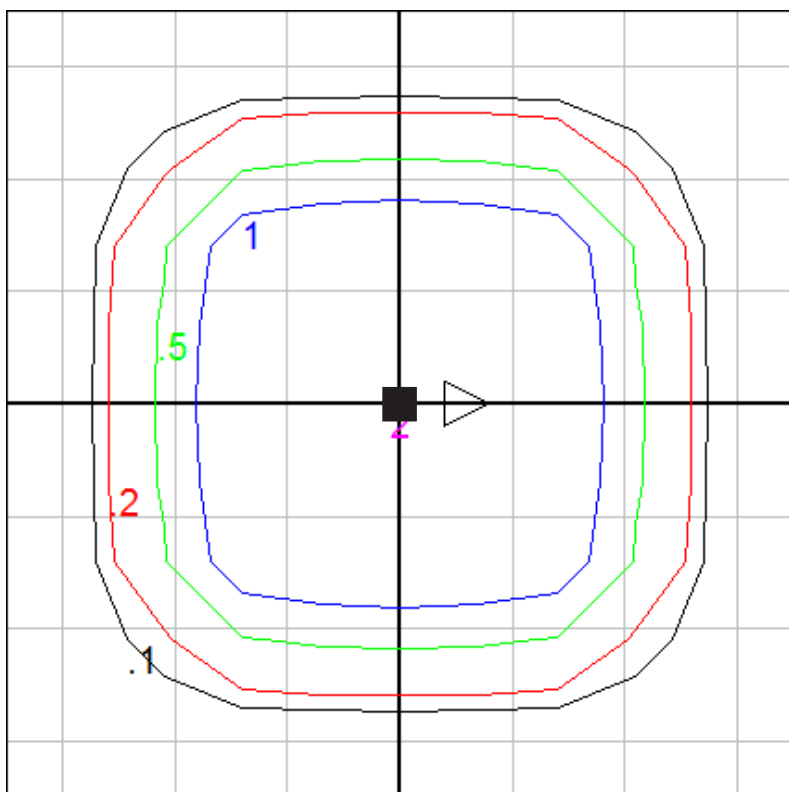


## Characteristics

Lumens Per Lamp	N.A. (absolute)
Total Lamp Lumens	N.A. (absolute)
Luminaire Lumens	181
Total Luminaire Efficiency	N.A.
Luminaire Efficacy Rating (LER)	18
Total Luminaire Watts	10
Ballast Factor	1.00
CIE Type	Direct
Spacing Criterion (0-180)	0.96
Spacing Criterion (90-270)	0.96
Spacing Criterion (Diagonal)	0.96
Basic Luminous Shape	Rectangular
Luminous Length (0-180)	0.34 ft
Luminous Width (90-270)	0.34 ft
Luminous Height	0.00 ft

## Zonal Lumen Summary

Zone	Lumens
0-10	19.35
10-20	56.60
20-30	72.36
30-40	18.41
40-50	5.44
50-60	4.85
60-70	2.91
70-80	1.25
80-90	0.26
90-100	0.00
100-110	0.00
110-120	0.00
120-130	0.00
130-140	0.00
140-150	0.00
150-160	0.00
160-170	0.00
170-180	0.00



Mounting Height (AFF) = 10 ft.

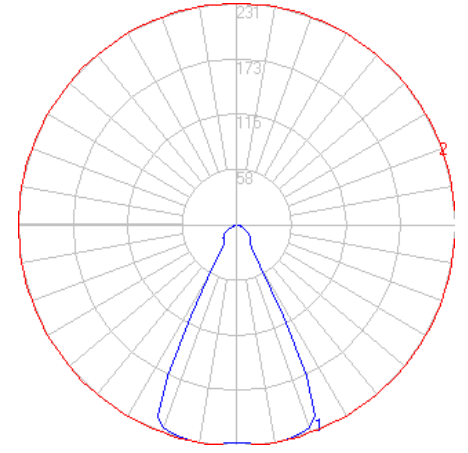
Grid Spacing = 2.5 ft.

In the interest of product improvement, BEGA reserves the right to make technical changes without notice.

# BEGA

Photometric Filename: 50185-4\_PRE.IES

TEST: N/A\*  
 TEST LAB: BEGA  
 DATE: 3/23/2016  
 LUMINAIRE: 50 185.4 (Preliminary)  
 LAMP: 6.3W LED



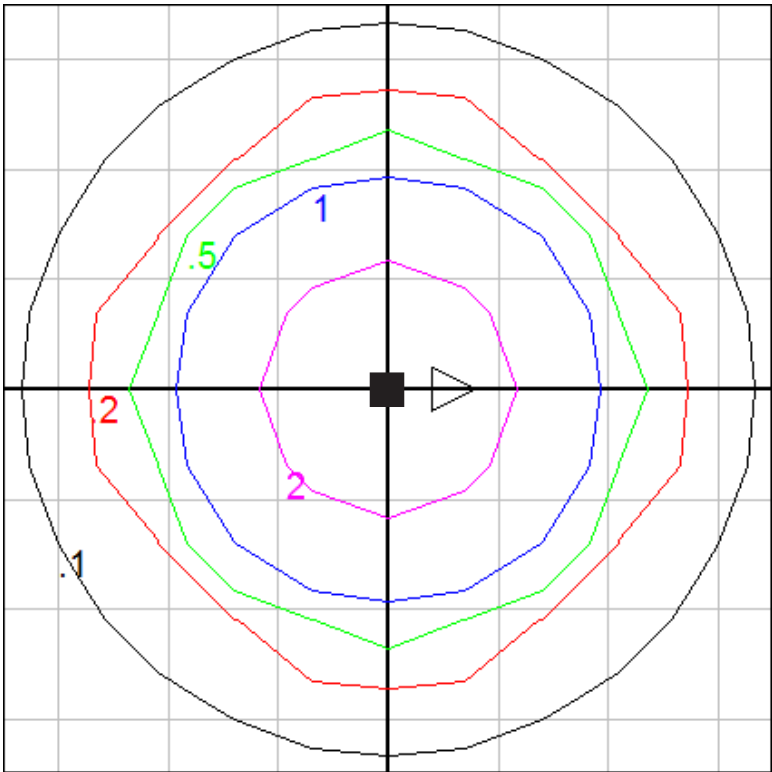
\*Preliminary data

### Characteristics

Lumens Per Lamp	N.A. (absolute)
Total Lamp Lumens	N.A. (absolute)
Luminaire Lumens	211
Total Luminaire Efficiency	N.A.
Luminaire Efficacy Rating (LER)	21
Total Luminaire Watts	10
Ballast Factor	1.00
CIE Type	Direct
Spacing Criterion (0-180)	0.98
Spacing Criterion (90-270)	0.98
Spacing Criterion (Diagonal)	0.78
Basic Luminous Shape	Rectangular
Luminous Length (0-180)	0.34 ft
Luminous Width (90-270)	0.34 ft
Luminous Height	0.00 ft

### Zonal Lumen Summary

Zone	Lumens
0-10	21.94
10-20	64.89
20-30	70.88
30-40	17.26
40-50	15.57
50-60	12.11
60-70	5.14
70-80	2.27
80-90	0.54
90-100	0.00
100-110	0.00
110-120	0.00
120-130	0.00
130-140	0.00
140-150	0.00
150-160	0.00
160-170	0.00
170-180	0.00



Mounting Height (AFF) = 10 ft.

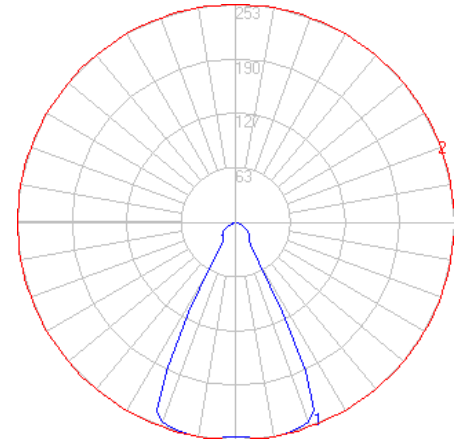
Grid Spacing = 2.5 ft.

In the interest of product improvement, BEGA reserves the right to make technical changes without notice.

# BEGA

Photometric Filename: 50185-2\_PRE.IES

TEST: N/A\*  
 TEST LAB: BEGA  
 DATE: 3/23/2016  
 LUMINAIRE: 50 185.2 (Preliminary)  
 LAMP: 6.3W LED



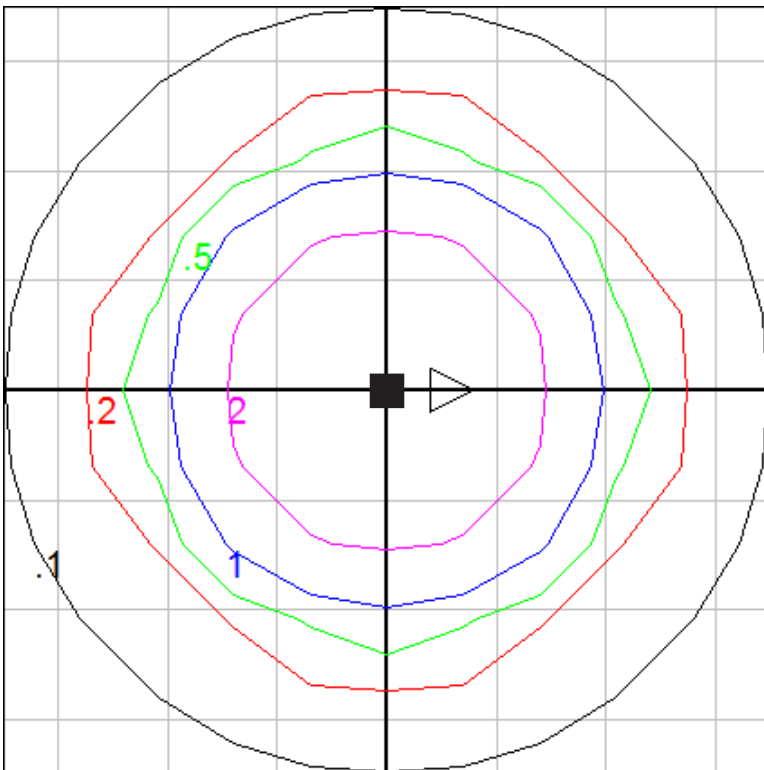
\*Preliminary data

### Characteristics

Lumens Per Lamp	N.A. (absolute)
Total Lamp Lumens	N.A. (absolute)
Luminaire Lumens	231
Total Luminaire Efficiency	N.A.
Luminaire Efficacy Rating (LER)	22
Total Luminaire Watts	10.6
Ballast Factor	1.00
CIE Type	Direct
Spacing Criterion (0-180)	0.98
Spacing Criterion (90-270)	0.98
Spacing Criterion (Diagonal)	0.78
Basic Luminous Shape	Rectangular
Luminous Length (0-180)	0.34 ft
Luminous Width (90-270)	0.34 ft
Luminous Height	0.00 ft

### Zonal Lumen Summary

Zone	Lumens
0-10	24.10
10-20	71.28
20-30	77.87
30-40	18.96
40-50	17.10
50-60	13.31
60-70	5.67
70-80	2.50
80-90	0.59
90-100	0.00
100-110	0.00
110-120	0.00
120-130	0.00
130-140	0.00
140-150	0.00
150-160	0.00
160-170	0.00
170-180	0.00



Mounting Height (AFF) = 10 ft.

Grid Spacing = 2.5 ft.

In the interest of product improvement, BEGA reserves the right to make technical changes without notice.