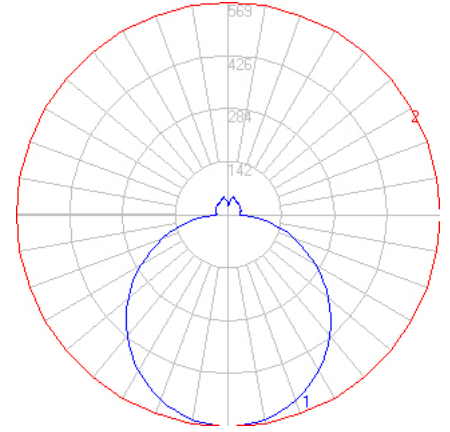


BEGA

File: 50172K4_BEGA_IES.ies

TEST: BE_50172K4
 TEST LAB: BEGA
 DATE: 05/30/2017
 LUMINAIRE: 50 172K4
 LAMP: 28.1W LED

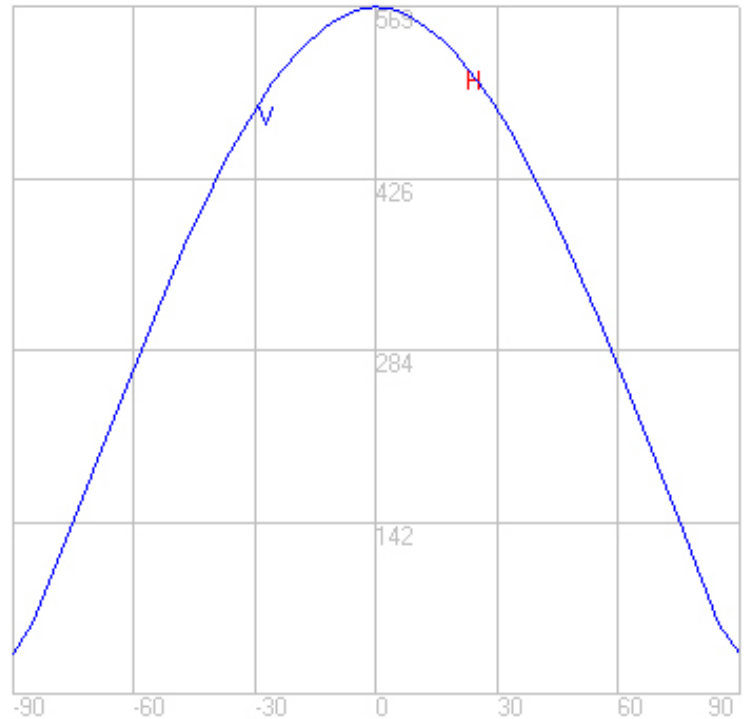
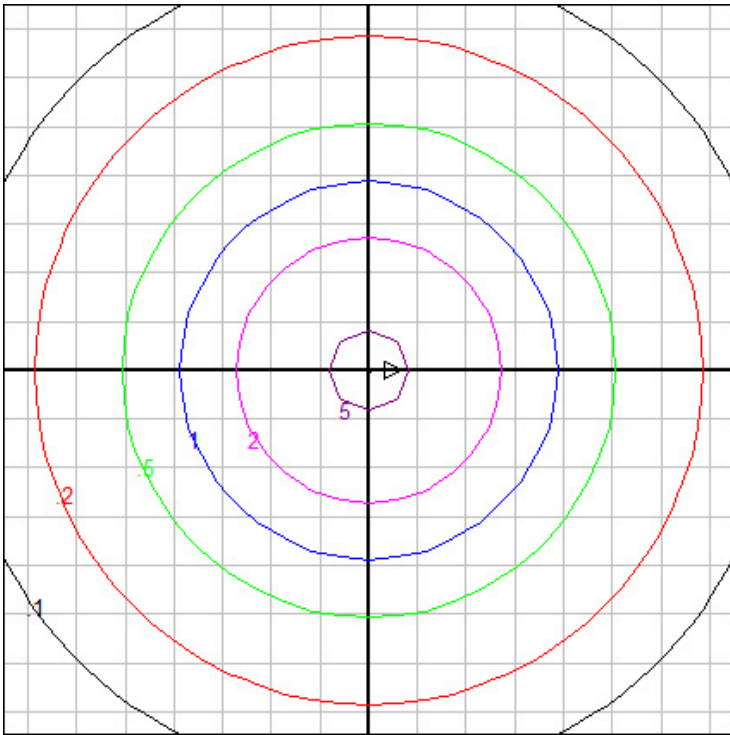


Characteristics

Lumens Per Lamp	N.A. (absolute)
Total Lamp Lumens	N.A. (absolute)
Luminaire Lumens	1986
Total Luminaire Efficiency	N.A.
Luminaire Efficacy Rating (LER)	62
Total Luminaire Watts	33
Ballast Factor	1.00
CIE Type	Semi-Direct
Spacing Criterion (0-180)	1.28
Spacing Criterion (90-270)	1.28
Spacing Criterion (Diagonal)	1.40
Basic Luminous Shape	Circular w/ Sides
Luminous Length (0-180)	0.00 ft
Luminous Width (90-270)	1.25 ft (Diameter)
Luminous Height	0.16 ft

Zonal Lumen Summary

Zone	Lumens
0-10	53.73
10-20	154.04
20-30	234.31
30-40	284.69
40-50	299.49
50-60	278.52
60-70	226.92
70-80	153.24
80-90	67.10
90-100	35.19
100-110	36.07
110-120	35.92
120-130	34.15
130-140	30.50
140-150	25.53
150-160	20.21
160-170	13.45
170-180	3.43



Mounting Height: 10 ft.

Grid Spacing: 3 ft.

In the interest of product improvement, BEGA reserves the right to make technical changes without notice.

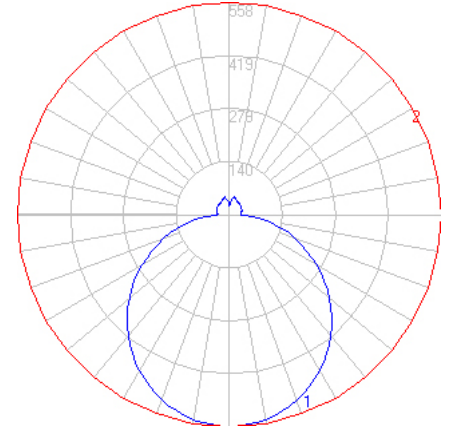
BEGA 1000 Bega Way, Carpinteria, CA 93013 (805)684-0533 Fax (805)566-9474 www.bega-us.com © Copyright BEGA-US 2020

05/13/20

BEGA

File: 50172K35_BEGA_IES.ies

TEST: BE_50172K4
 TEST LAB: BEGA
 DATE: 05/30/2017
 LUMINAIRE: 50 172K35
 LAMP: 28.1W LED

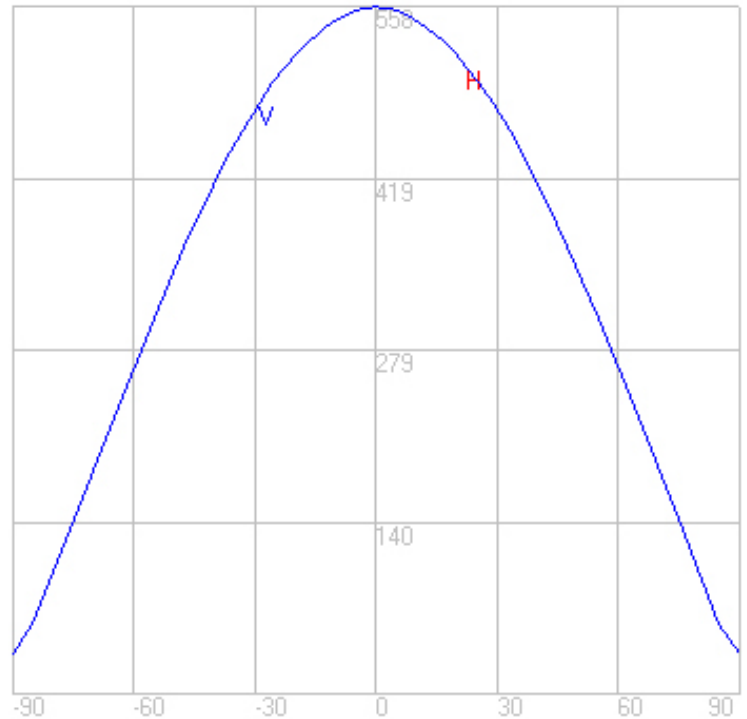
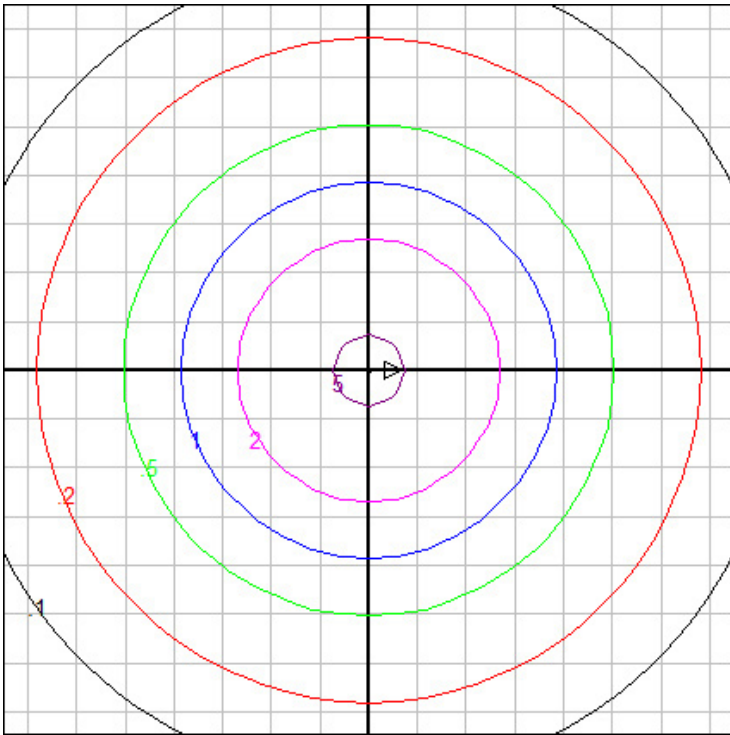


Characteristics

Lumens Per Lamp	N.A. (absolute)
Total Lamp Lumens	N.A. (absolute)
Luminaire Lumens	1951
Total Luminaire Efficiency	N.A.
Luminaire Efficacy Rating (LER)	61
Total Luminaire Watts	33
Ballast Factor	1.00
CIE Type	Semi-Direct
Spacing Criterion (0-180)	1.28
Spacing Criterion (90-270)	1.28
Spacing Criterion (Diagonal)	1.40
Basic Luminous Shape	Circular w/ Sides
Luminous Length (0-180)	0.00 ft
Luminous Width (90-270)	1.25 ft (Diameter)
Luminous Height	0.16 ft

Zonal Lumen Summary

Zone	Lumens
0-10	52.76
10-20	151.27
20-30	230.09
30-40	279.57
40-50	294.10
50-60	273.51
60-70	222.83
70-80	150.48
80-90	65.89
90-100	34.55
100-110	35.42
110-120	35.27
120-130	33.53
130-140	29.95
140-150	25.07
150-160	19.84
160-170	13.20
170-180	3.37



Mounting Height: 10 ft.

Grid Spacing: 3 ft.

In the interest of product improvement, BEGA reserves the right to make technical changes without notice.

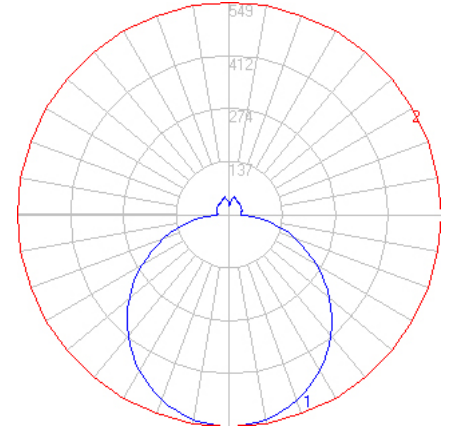
BEGA 1000 Bega Way, Carpinteria, CA 93013 (805)684-0533 Fax (805)566-9474 www.bega-us.com © Copyright BEGA-US 2020

05/13/20

BEGA

File: 50172K3_BEGA_IES.ies

TEST: BE_50172K4
 TEST LAB: BEGA
 DATE: 05/30/2017
 LUMINAIRE: 50 172K3
 LAMP: 28.1W LED

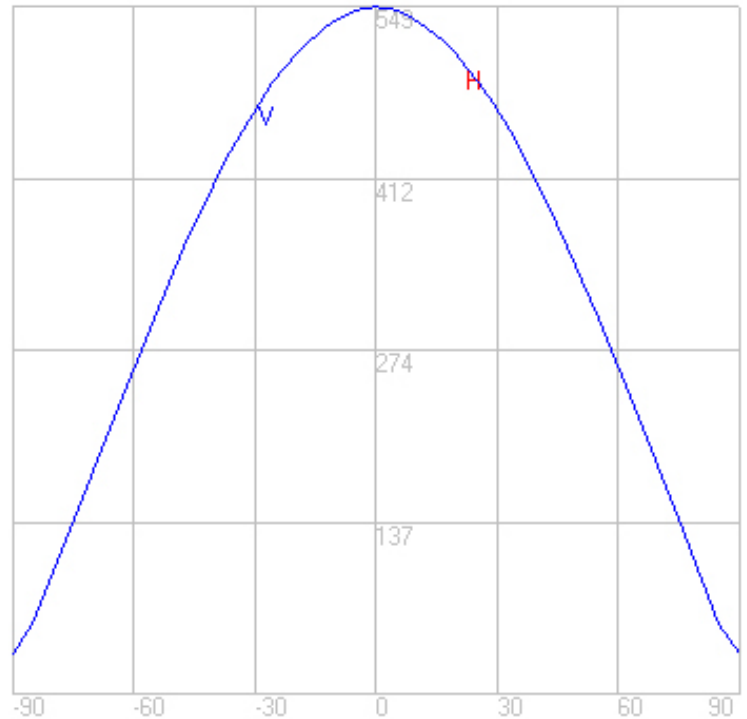
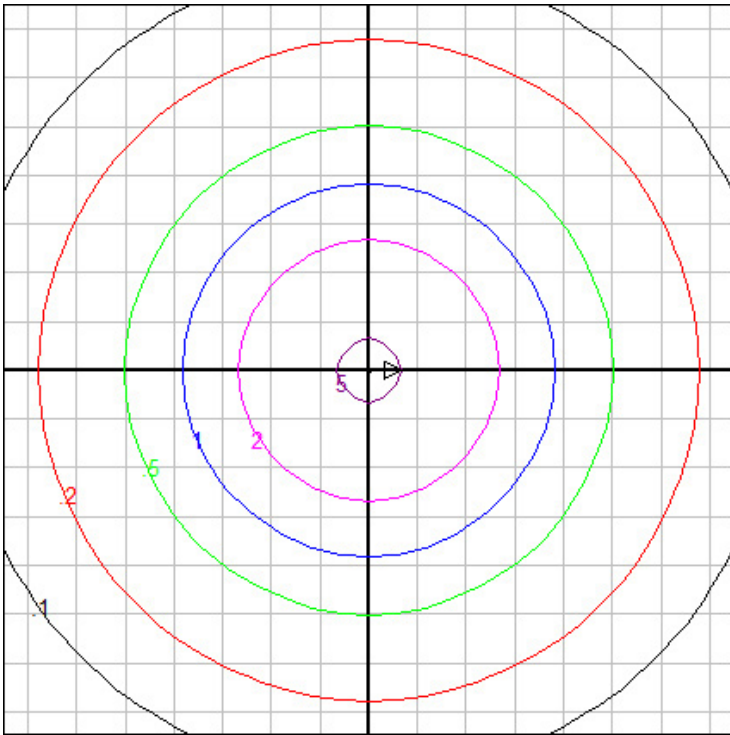


Characteristics

Lumens Per Lamp	N.A. (absolute)
Total Lamp Lumens	N.A. (absolute)
Luminaire Lumens	1917
Total Luminaire Efficiency	N.A.
Luminaire Efficacy Rating (LER)	60
Total Luminaire Watts	33
Ballast Factor	1.00
CIE Type	Semi-Direct
Spacing Criterion (0-180)	1.28
Spacing Criterion (90-270)	1.28
Spacing Criterion (Diagonal)	1.40
Basic Luminous Shape	Circular w/ Sides
Luminous Length (0-180)	0.00 ft
Luminous Width (90-270)	1.25 ft (Diameter)
Luminous Height	0.16 ft

Zonal Lumen Summary

Zone	Lumens
0-10	51.85
10-20	148.65
20-30	226.11
30-40	274.73
40-50	289.01
50-60	268.77
60-70	218.98
70-80	147.88
80-90	64.75
90-100	33.95
100-110	34.80
110-120	34.66
120-130	32.95
130-140	29.43
140-150	24.63
150-160	19.50
160-170	12.98
170-180	3.31



Mounting Height: 10 ft.

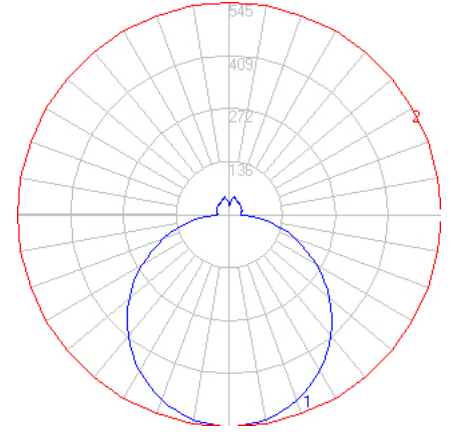
Grid Spacing: 3 ft.

In the interest of product improvement, BEGA reserves the right to make technical changes without notice.

BEGA

File: 50172K27_BEGA_IES.ies

TEST: BE_50172K4
 TEST LAB: BEGA
 DATE: 05/30/2017
 LUMINAIRE: 50 172K27
 LAMP: 28.1W LED

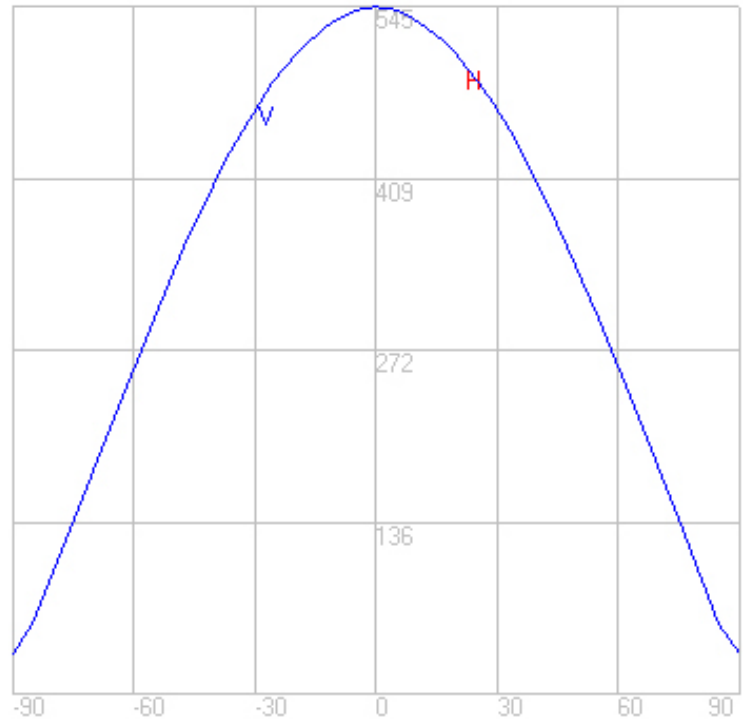
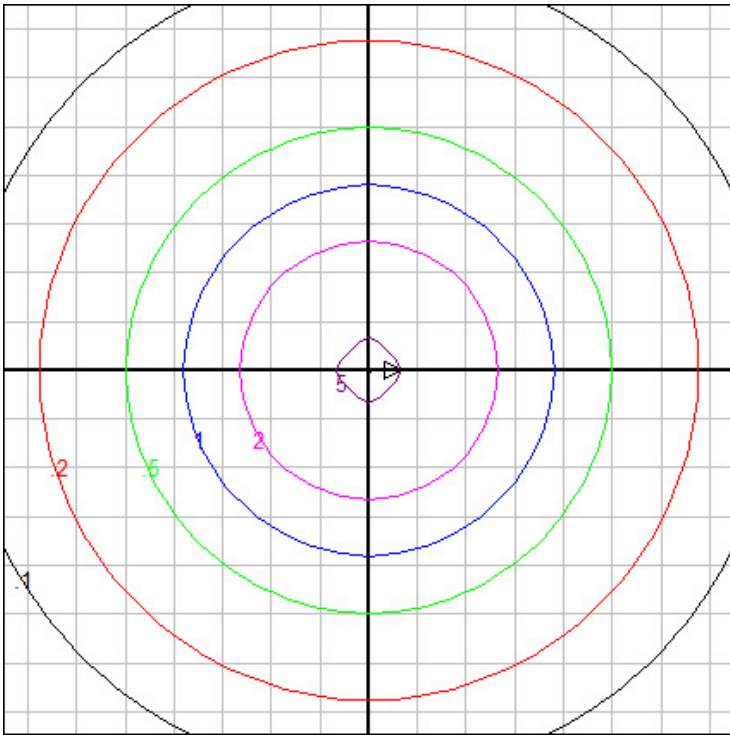


Characteristics

Lumens Per Lamp	N.A. (absolute)
Total Lamp Lumens	N.A. (absolute)
Luminaire Lumens	1903
Total Luminaire Efficiency	N.A.
Luminaire Efficacy Rating (LER)	59
Total Luminaire Watts	33
Ballast Factor	1.00
CIE Type	Semi-Direct
Spacing Criterion (0-180)	1.28
Spacing Criterion (90-270)	1.28
Spacing Criterion (Diagonal)	1.40
Basic Luminous Shape	Circular w/ Sides
Luminous Length (0-180)	0.00 ft
Luminous Width (90-270)	1.25 ft (Diameter)
Luminous Height	0.16 ft

Zonal Lumen Summary

Zone	Lumens
0-10	51.47
10-20	147.57
20-30	224.47
30-40	272.73
40-50	286.91
50-60	266.82
60-70	217.39
70-80	146.81
80-90	64.28
90-100	33.71
100-110	34.55
110-120	34.41
120-130	32.71
130-140	29.22
140-150	24.45
150-160	19.36
160-170	12.88
170-180	3.28



Mounting Height: 10 ft.

Grid Spacing: 3 ft.

In the interest of product improvement, BEGA reserves the right to make technical changes without notice.

BEGA 1000 Bega Way, Carpinteria, CA 93013 (805)684-0533 Fax (805)566-9474 www.bega-us.com © Copyright BEGA-US 2020

05/13/20