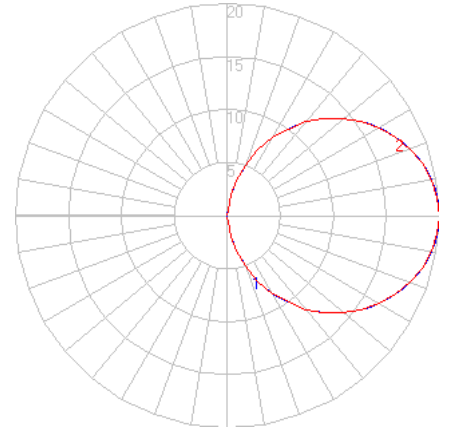


BEGA

Photometric Filename: 33882.ies

TEST: BE_33882
 TEST LAB: BEGA
 DATE: 10/07/2015
 LUMINAIRE: 33 882
 LAMP: 2.1W LED 24V DC



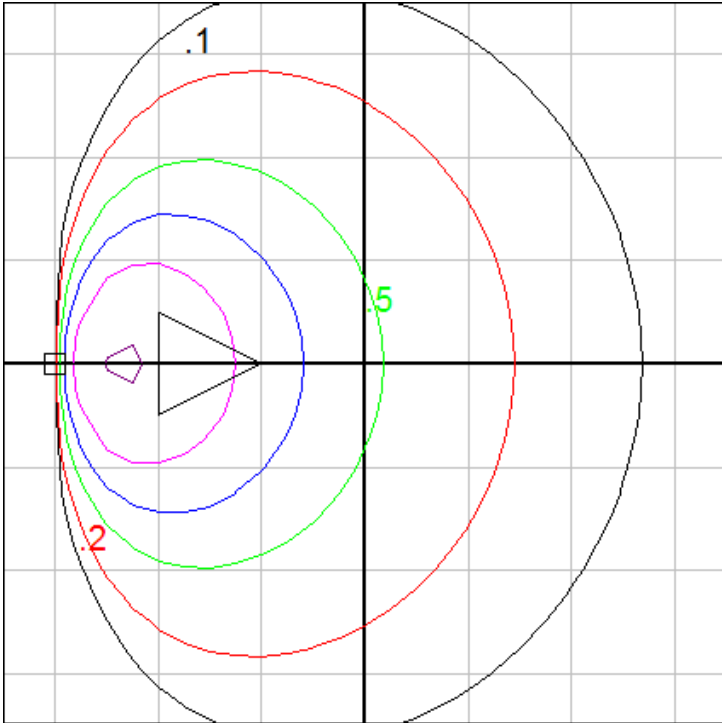
Characteristics

IES Classification	N.A.
Longitudinal Classification	N.A.
Lumens Per Lamp	N.A. (absolute)
Total Lamp Lumens	N.A. (absolute)
Luminaire Lumens	54
Downward Total Efficiency	N.A.
Total Luminaire Efficiency	N.A.
Luminaire Efficacy Rating (LER)	18
Total Luminaire Watts	3
Ballast Factor	1.00
Upward Waste Light Ratio	0.50
Max. Cd.	19.6 (0H, 92.5V)
Max. Cd. (<90 Vert.)	19.6 (0H, 87.5V)
Max. Cd. (At 90 Deg. Vert.)	19.6 (36.3%Lum)
Max. Cd. (80 to <90 Deg. Vert.)	19.6 (36.3%Lum)
Cutoff Classification (deprecated)	N.A. (absolute)

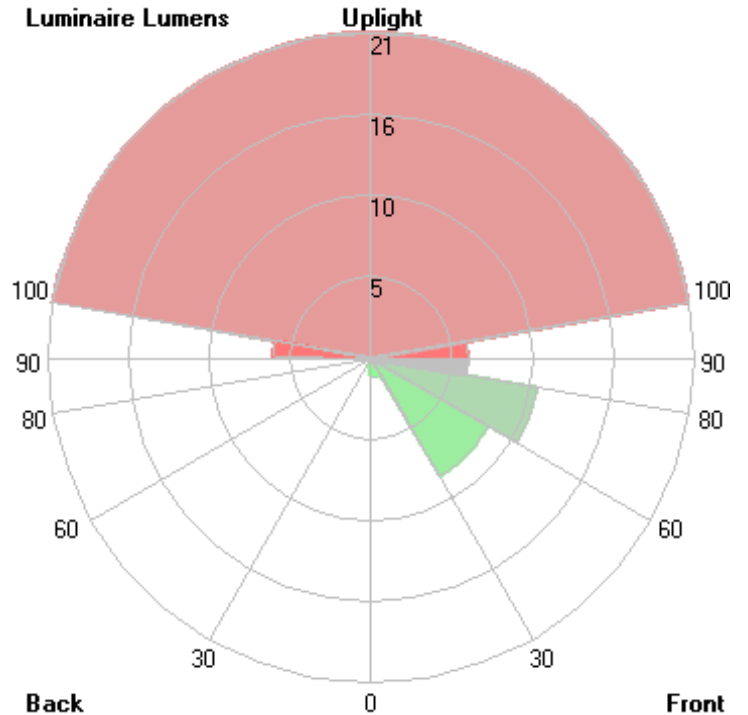
Lum. Classification System (LCS)

LCS Zone	Lumens	%Lamp	%Lum
FL (0-30)	1.2	N.A.	2.2
FM (30-60)	8.7	N.A.	16.2
FH (60-80)	10.8	N.A.	20.2
FVH(80-90)	6.2	N.A.	11.6
BL (0-30)	0.0	N.A.	0.0
BM (30-60)	0.0	N.A.	0.0
BH (60-80)	0.0	N.A.	0.0
BVH(80-90)	0.0	N.A.	0.0
UL (90-100)	6.2	N.A.	11.6
UH (100-180)	20.7	N.A.	38.6
Total	53.8	N.A.	100.0

BUG Rating B0-U2-G0



Mounting Height = 1 ft. Grid Spacing = 1 ft.



In the interest of product improvement, BEGA reserves the right to make technical changes without notice.