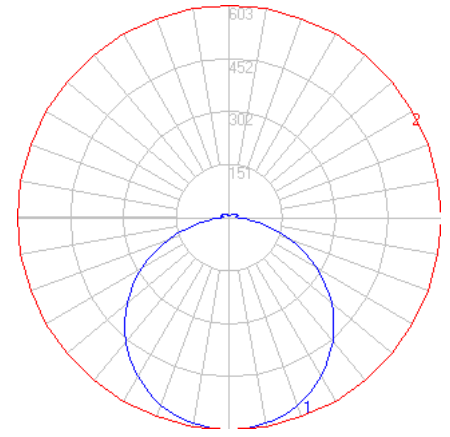


# BEGA

Photometric Filename: 33683.IES

TEST: BE\_33683  
 TEST LAB: BEGA  
 DATE: 9/29/2016  
 LUMINAIRE: 33 683  
 LAMP: 19.6W LED

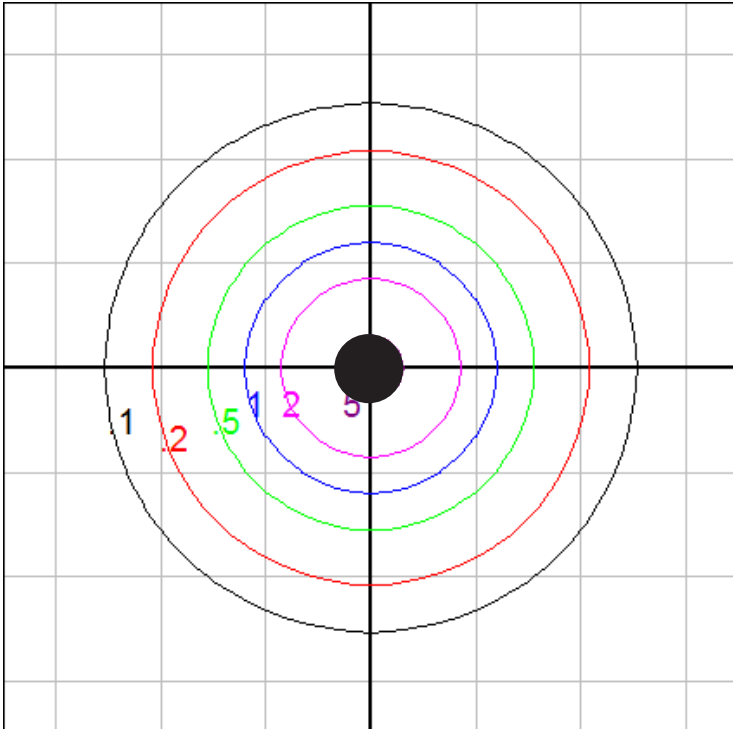


### Characteristics

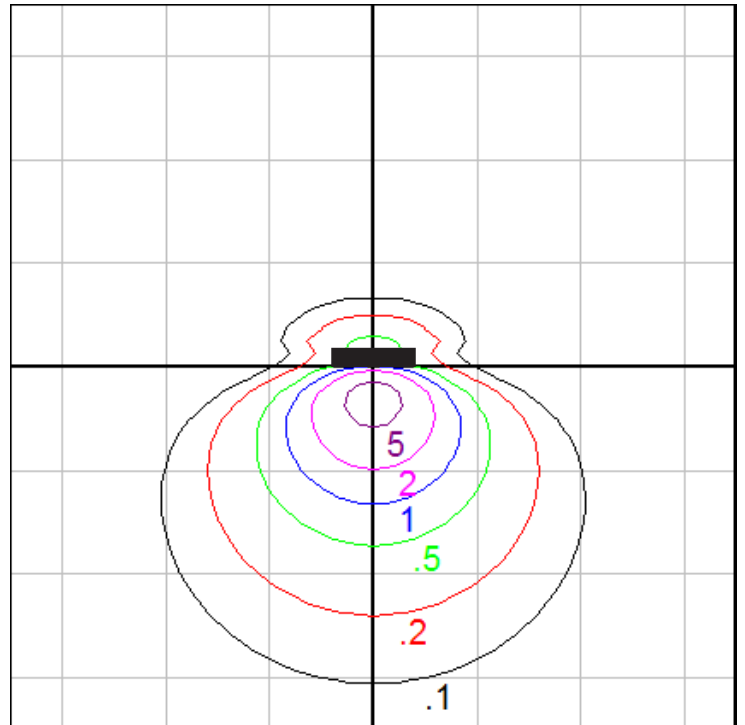
|                                 |                    |
|---------------------------------|--------------------|
| Lumens Per Lamp                 | N.A. (absolute)    |
| Total Lamp Lumens               | N.A. (absolute)    |
| Luminaire Lumens                | 1937               |
| Total Luminaire Efficiency      | N.A.               |
| Luminaire Efficacy Rating (LER) | 84                 |
| Total Luminaire Watts           | 23                 |
| Ballast Factor                  | 1.00               |
| CIE Type                        | Direct             |
| Spacing Criterion (0-180)       | 1.30               |
| Spacing Criterion (90-270)      | 1.30               |
| Spacing Criterion (Diagonal)    | 1.42               |
| Basic Luminous Shape            | Circular w/ Sides  |
| Luminous Length (0-180)         | 0.00 ft            |
| Luminous Width (90-270)         | 1.00 ft (Diameter) |
| Luminous Height                 | 0.10 ft            |

### Zonal Lumen Summary

| Zone    | Lumens |
|---------|--------|
| 0-10    | 57.13  |
| 10-20   | 164.73 |
| 20-30   | 251.87 |
| 30-40   | 307.22 |
| 40-50   | 323.77 |
| 50-60   | 298.78 |
| 60-70   | 234.68 |
| 70-80   | 141.34 |
| 80-90   | 51.99  |
| 90-100  | 21.68  |
| 100-110 | 23.83  |
| 110-120 | 21.22  |
| 120-130 | 15.65  |
| 130-140 | 10.83  |
| 140-150 | 6.74   |
| 150-160 | 3.45   |
| 160-170 | 1.44   |
| 170-180 | 0.28   |



Ceiling Mount - Iso-footcandle grid on floor  
 Mounting Height = 10 ft. Grid Spacing = 10 ft.



Wall Mount - Iso-footcandle grid on floor  
 Mounting Height = 5 ft. Grid Spacing = 10 ft.

In the interest of product improvement, BEGA reserves the right to make technical changes without notice.