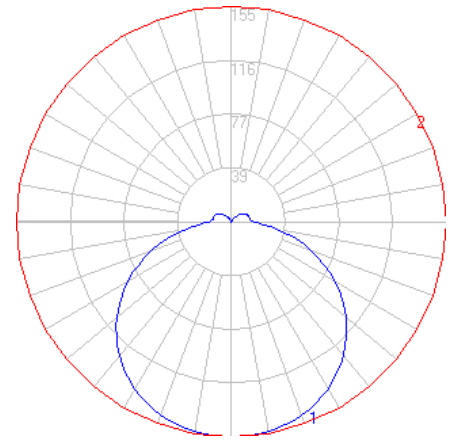


BEGA

Photometric Filename: 33535.IES

TEST: BE_33535
 TEST LAB: BEGA
 DATE: 4/4/2018
 LUMINAIRE: 33 535
 LAMP: 4.7W LED

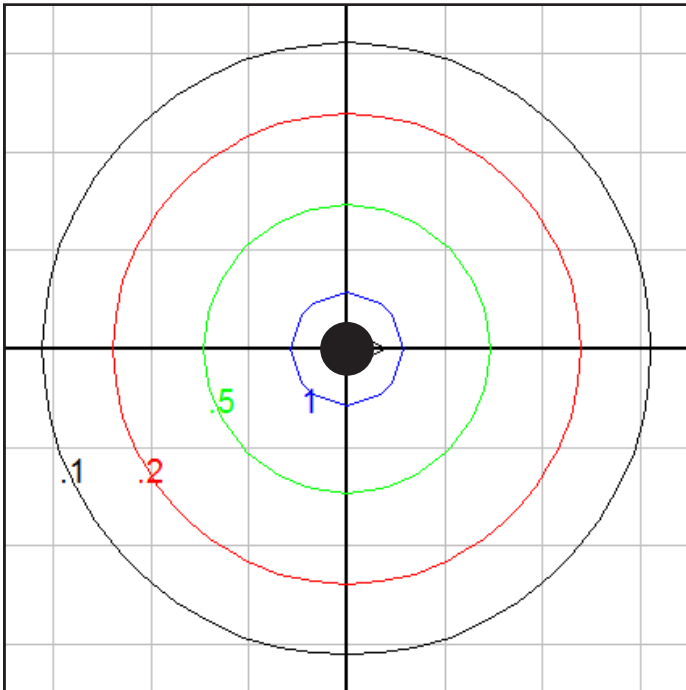


Characteristics

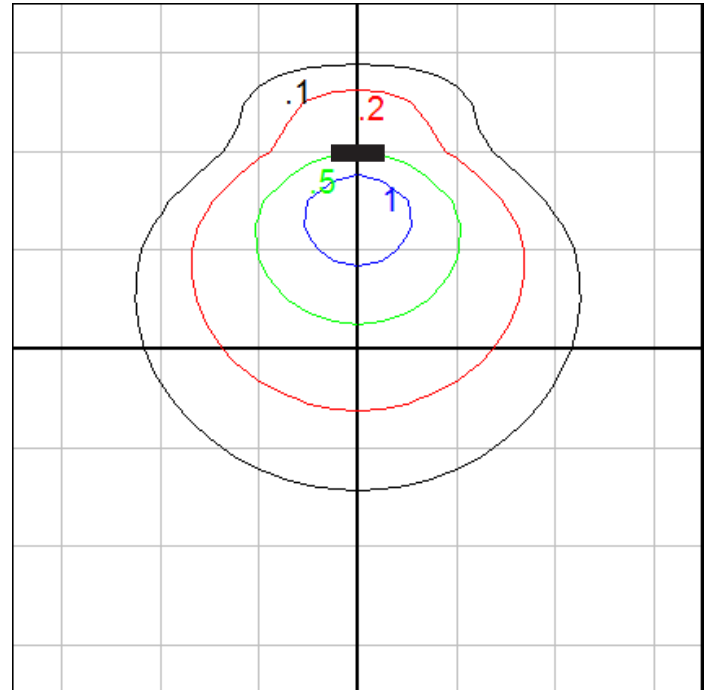
Lumens Per Lamp	N.A. (absolute)
Total Lamp Lumens	N.A. (absolute)
Luminaire Lumens	590
Total Luminaire Efficiency	N.A.
Luminaire Efficacy Rating (LER)	84
Total Luminaire Watts	7
Ballast Factor	1.00
CIE Type	Direct
Spacing Criterion (0-180)	1.34
Spacing Criterion (90-270)	1.34
Spacing Criterion (Diagonal)	1.48
Basic Luminous Shape	Circular w/ Sides
Luminous Length (0-180)	0.00 ft
Luminous Width (90-270)	0.62 ft (Diameter)
Luminous Height	0.08 ft

Zonal Lumen Summary

Zone	Lumens
0-10	14.69
10-20	42.75
20-30	66.47
30-40	83.02
40-50	90.27
50-60	87.01
60-70	73.23
70-80	50.65
80-90	25.87
90-100	15.39
100-110	13.94
110-120	12.01
120-130	8.44
130-140	4.65
140-150	1.59
150-160	0.11
160-170	0.02
170-180	0.01



Ceiling Mount Fixture - Isofootcandle Grid on Floor
 Mounting Height = 10 ft. Grid Spacing = 5 ft.



Wall Mount Fixture - Isofootcandle Grid on Floor
 Mounting Height = 5 ft Grid Spacing =

In the interest of product improvement, BEGA reserves the right to make technical changes without notice.