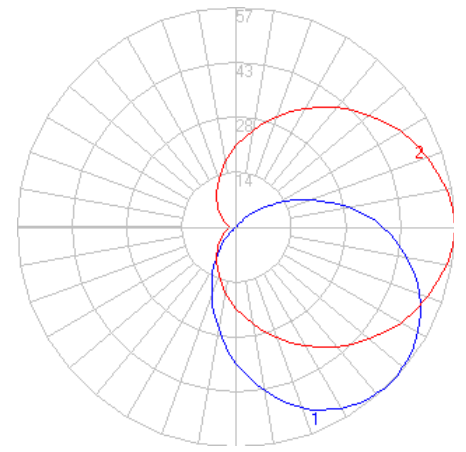


# BEGA

Photometric Filename: 33429.IES

TEST: BE\_33429  
 TEST LAB: BEGA  
 DATE: 12/12/2016  
 LUMINAIRE: 33 429  
 LAMP: 3.9W LED



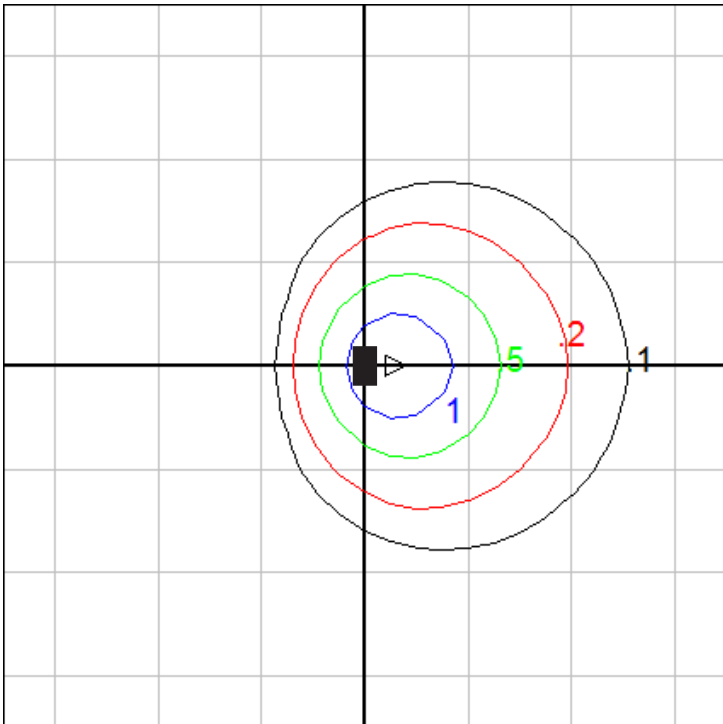
**Characteristics**

IES Classification	Type IV
Longitudinal Classification	Very Short
Lumens Per Lamp	N.A. (absolute)
Total Lamp Lumens	N.A. (absolute)
Luminaire Lumens	165
Downward Total Efficiency	N.A.
Total Luminaire Efficiency	N.A.
Luminaire Efficacy Rating (LER)	28
Total Luminaire Watts	6
Ballast Factor	1.00
Upward Waste Light Ratio	0.17
Max. Cd.	56.8 (0H, 47.5V)
Max. Cd. (<90 Vert.)	56.8 (0H, 47.5V)
Max. Cd. (At 90 Deg. Vert.)	38.2 (23.2%Lum)
Max. Cd. (80 to <90 Deg. Vert.)	44.9 (27.2%Lum)
Cutoff Classification (deprecated)	N.A. (absolute)

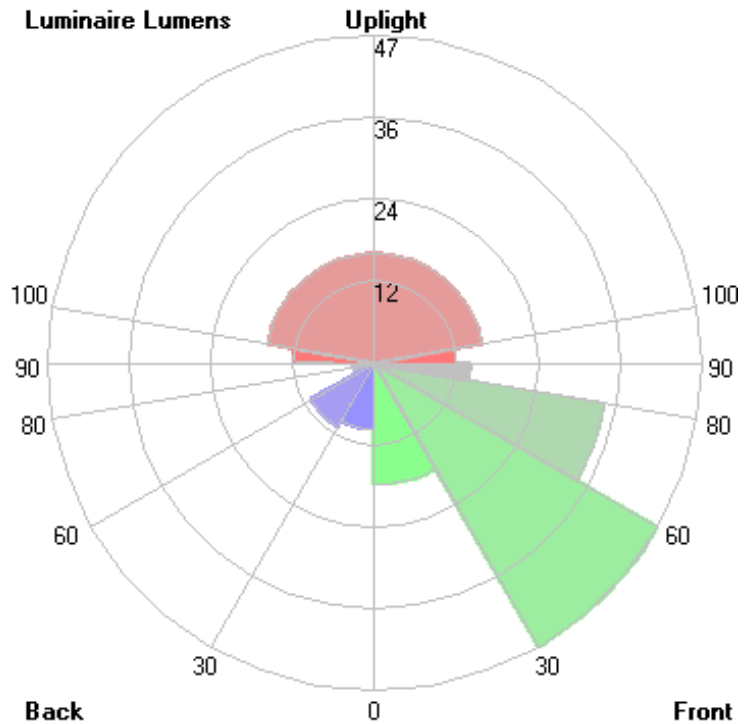
**Lum. Classification System (LCS)**

<u>LCS Zone</u>	<u>Lumens</u>	<u>%Lamp</u>	<u>%Lum</u>
FL (0-30)	17.6	N.A.	10.7
FM (30-60)	47.5	N.A.	28.8
FH (60-80)	33.9	N.A.	20.6
FVH (80-90)	14.0	N.A.	8.5
BL (0-30)	9.7	N.A.	5.9
BM (30-60)	10.7	N.A.	6.5
BH (60-80)	3.0	N.A.	1.8
BVH (80-90)	1.0	N.A.	0.6
UL (90-100)	11.7	N.A.	7.1
UH (100-180)	15.8	N.A.	9.6
Total	164.9	N.A.	100.0

**BUG Rating B0-U2-G1**



Wall Mount - Isofootcandle Grid on Floor  
 Mounting Height = 5 ft. Grid Spacing = 5 ft.



In the interest of product improvement, BEGA reserves the right to make technical changes without notice.