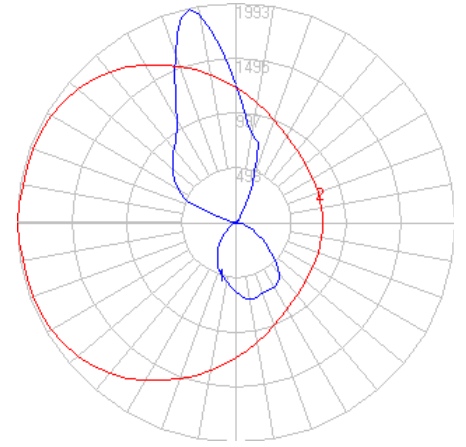


# BEGA

Photometric Filename: 33393.IES

TEST: BE\_33393  
 TEST LAB: BEGA  
 DATE: 7/12/2017  
 LUMINAIRE: 33 393  
 LAMP: 33.7W LED

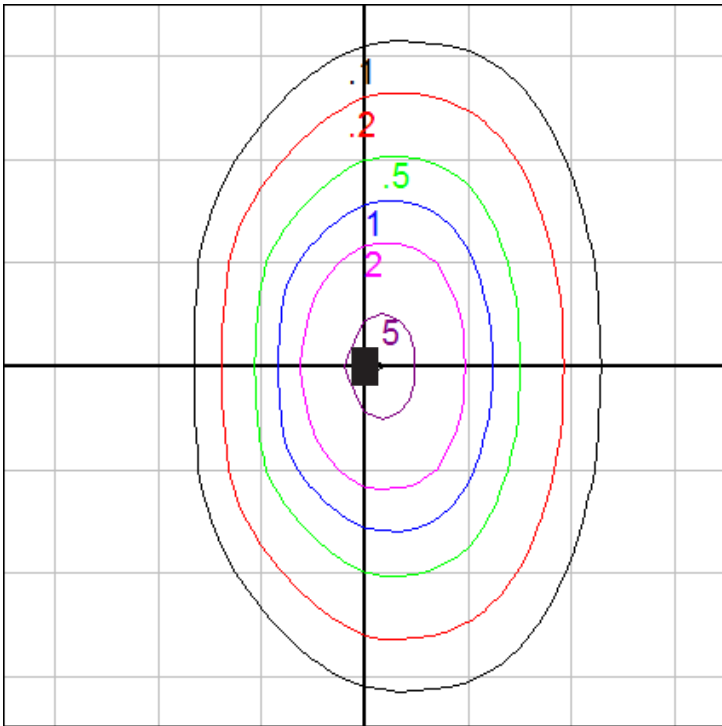


### Characteristics

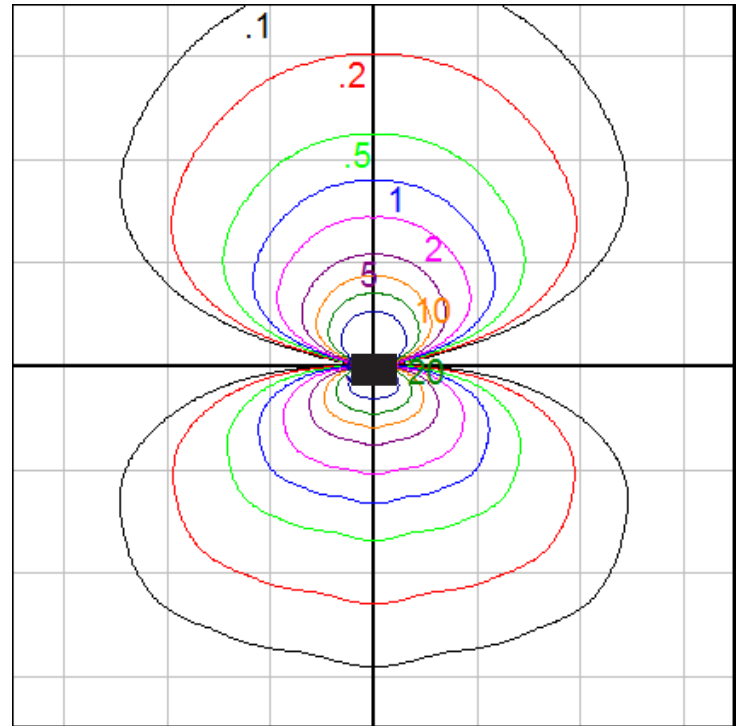
IES Classification	N.A.
Longitudinal Classification	N.A.
Lumens Per Lamp	N.A. (absolute)
Total Lamp Lumens	N.A. (absolute)
Luminaire Lumens	4640
Downward Total Efficiency	N.A.
Total Luminaire Efficiency	N.A.
Luminaire Efficacy Rating (LER)	113
Total Luminaire Watts	41
Ballast Factor	1.00
Upward Waste Light Ratio	0.55
Max. Cd.	1993.4 (180H, 167.5V)
Max. Cd. (<90 Vert.)	850.9 (65H, 45V)
Max. Cd. (At 90 Deg. Vert.)	2.2 (0.0%Lum)
Max. Cd. (80 to <90 Deg. Vert.)	162.4 (3.5%Lum)
Cutoff Classification (deprecated)	N.A. (absolute)

### Zonal Lumen Summary

Zone	Lumens
0-10	59.36
10-20	169.00
20-30	275.05
30-40	372.03
40-50	416.63
50-60	372.40
60-70	274.43
70-80	142.57
80-90	29.54
90-100	0.58
100-110	54.44
110-120	255.66
120-130	367.64
130-140	423.74
140-150	462.09
150-160	476.50
160-170	364.99
170-180	122.94



Wall mount - isofootcandle grid on floor  
 Mounting Height = 10 ft. Grid Spacing = 10 ft.



Wall mount - isofootcandle grid on wall  
 Grid Spacing = 5 ft.

In the interest of product improvement, BEGA reserves the right to make technical changes without notice.