

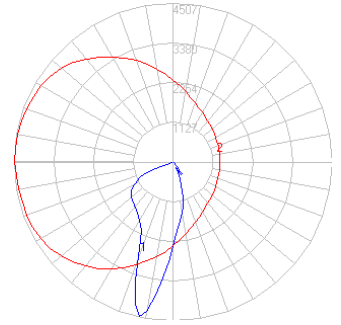
BEGA

Photometric Filename: 33388.IES

TEST: NA
 TEST LAB: BEGA
 DATE: 04/21/2015
 LUMINAIRE: 33 388
 LAMP: 43.4W LED



All results in accordance with IESNA LM-79-08



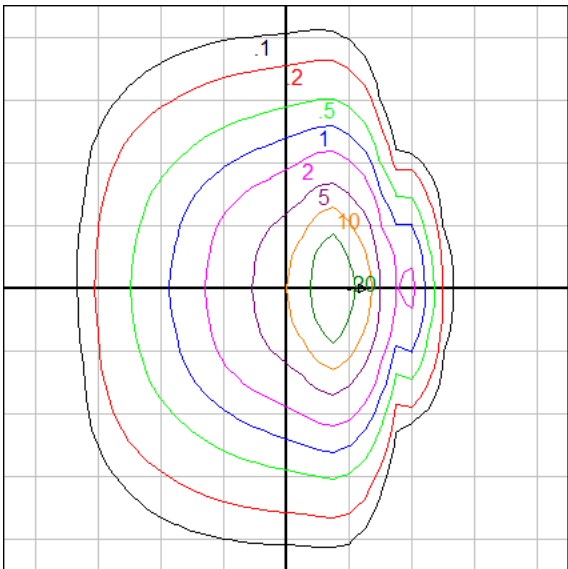
Characteristics

IES Classification	Type I
Longitudinal Classification	Very Short
Lumens Per Lamp	N.A. (absolute)
Total Lamp Lumens	N.A. (absolute)
Luminaire Lumens	4853
Downward Total Efficiency	N.A.
Total Luminaire Efficiency	N.A.
Luminaire Efficacy Rating (LER)	97
Total Luminaire Watts	50
Ballast Factor	1.00
Upward Waste Light Ratio	0.00
Max. Cd.	4507 (175H, 12.5V)
Max. Cd. (<90 Vert.)	4507 (175H, 12.5V)
Max. Cd. (At 90 Deg. Vert.)	.1 (0.0%Lum)
Max. Cd. (80 to <90 Deg. Vert.)	17.3 (0.4%Lum)
Cutoff Classification (deprecated)	N.A. (absolute)

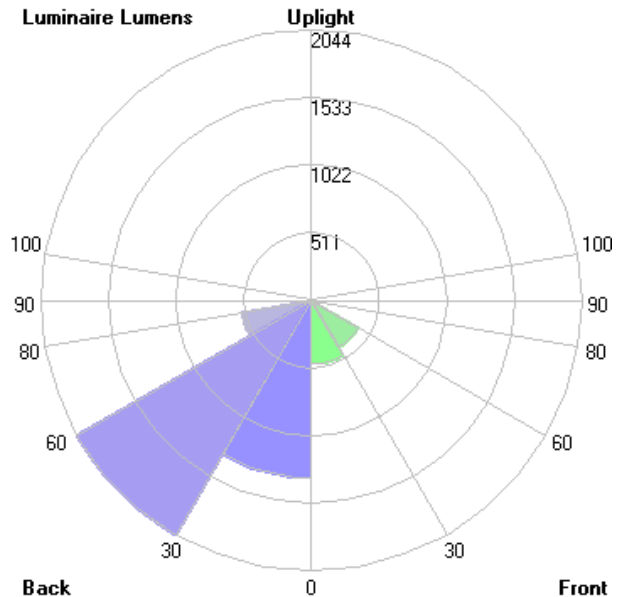
Lum. Classification System (LCS)

LCS Zone	Lumens	%Lamp	%Lum
FL (0-30)	481.7	N.A.	9.9
FM (30-60)	410.4	N.A.	8.5
FH (60-80)	37.2	N.A.	0.8
FVH(80-90)	1.0	N.A.	0.0
BL (0-30)	1342.7	N.A.	27.7
BM (30-60)	2044.3	N.A.	42.1
BH (60-80)	534.1	N.A.	11.0
BVH(80-90)	1.2	N.A.	0.0
UL (90-100)	< 0.05	N.A.	0.0
UH (100-180)	< 0.05	N.A.	0.0
Total	4852.6	N.A.	100.0

BUG Rating B3-U1-G2



Mounting Height = 10 ft. Grid Spacing = 7 ft.



In the interest of product improvement, BEGA reserves the right to make technical changes without notice.