

**Tools Required:**

Phillips medium screwdriver  
4mm hex key



**Dimensions**

**A:** 7-3/4"

**B:** 2-1/8"

**C:** 4-3/4"



**Protection Class:** IP64

**Weight:** 2.0 lbs.

**Notice to Installer for 33 325:**

1. See page 2 for specific product safety warnings.
2. **BEGA luminaires may be damaged if connected to conduit systems containing water - Article 300-5G of National Electric Code requires that "Conduits or raceways through which moisture may contact energized live parts shall be sealed or plugged at either or both ends".**
3. For attachment to wall surface OVER horizontally-oriented linear wiring box (19 545 provided by BEGA) see figure. NOTE: Fixture does mount directly to linear 19 545 wiring box.
4. In conformance with U.L. Standards 1598, a silicone-based sealant **MUST** be used between the mounting plate edge and supporting wall.
5. LEDs are high-quality electronic components! Please avoid touching the light output opening of the LED directly during installation.

**33 325 - wiring box installation:**

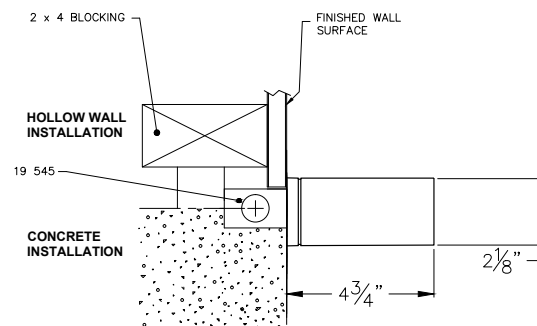
1. **Hollow (stud) wall construction** - Secure wiring box to wood or metal vertical blocking. Connect conduit to wiring box (if needed) and pull wires for electrical connections to be made later.
2. **Poured concrete construction** - Attach wiring box to the concrete form. Connect conduit to wiring box (if needed) and pull wires for electrical connections to be made later. Pour concrete and remove form.

**IMPORTANT: Do not pour concrete directly on to box!**

**33 325 - installation:**

1. Loosen (2) 4mm set screws on underside of luminaire near the base and remove front casting from mounting base. Feed luminaire wiring through rubber grommet in mounting base.
  2. Make supply wire and luminaire wire splices in the single-gang junction box (by others):  
CONNECT NEUTRAL SUPPLY WIRE TO WHITE FIXTURE LEAD  
CONNECT MAIN VOLTAGE (LINE) SUPPLY WIRE TO BLACK FIXTURE LEAD  
CONNECT GREEN SUPPLY WIRE TO GREEN FIXTURE LEAD
- Dimming (if applicable):**  
DIMMING CONTROL WIRE (+) TO POSITIVE DRIVER DIM CONTROL WIRE  
DIMMING CONTROL WIRE (-) TO NEGATIVE DRIVER DIM CONTROL WIRE
3. Place a small bead of silicone around the back side of the luminaire mounting base that will come in contact with the finished surface (exterior applications only). Mount luminaire base directly to the wall surface, referring to Fig. 1 for mounting hole locations.
  4. Attach front casting, including lens, to the luminaire base and secure by tightening (2) set screws snugly to the stop.

**Fig 1**



**Relamping/Maintenance**

Loosen (2) set screws and remove front casting with lens. Clean luminaire and lens using only solvent-free cleansers. Replace casting and tighten (2) screws.

**Accessories**

Please refer to the appropriate accessory installation sheet for further instruction when applicable.

**Replacement Parts**

Description	Part No
Face plate assembly	FP33325
Housing gasket	83001942
Housing gasket (WHT)	83001945
LED driver	76104
LED module	LED-0273/930
LED module	LED-0273/940

**Lamp:** 3.9W LED

**Product Safety Warnings:**

**THIS PRODUCT MUST BE INSTALLED IN ACCORDANCE WITH THE APPLICABLE INSTALLATION CODE BY A PERSON FAMILIAR WITH THE CONSTRUCTION AND OPERATION OF THE PRODUCT AND THE HAZARDS INVOLVED. SUITABLE FOR WET LOCATIONS.**

**MIN 90°C SUPPLY CONDUCTORS.**

**CE PRODUIT DOIT ÊTRE INSTALLÉ SELON LE CODE D'INSTALLATION PERTINENT, PAR UNE PERSONNE QUI CONNAÎT BIEN LE PRODUIT ET SON FONCTIONNEMENT AINSI QUE LES RISQUES INHÉRENTS. CONVIENT AUX EMPLACEMENTS MOUILLÉS.**

**LES FILS D'ALIMENTATION 90°C MIN.**

---