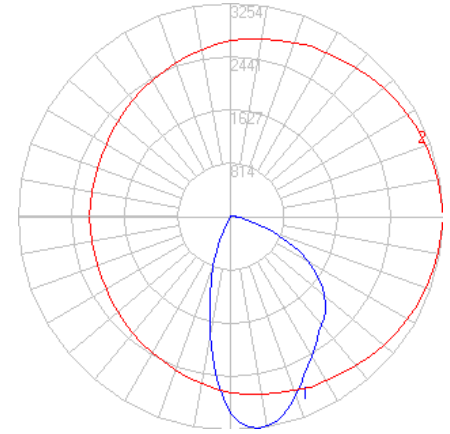
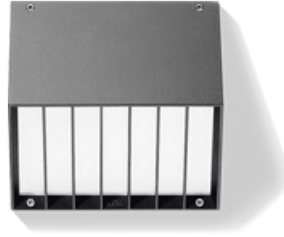


BEGA

Photometric Filename: 33239.IES

TEST: BE_33239
 TEST LAB: BEGA
 DATE: 10/1/2017
 LUMINAIRE: 33 239
 LAMP: 29.8W LED



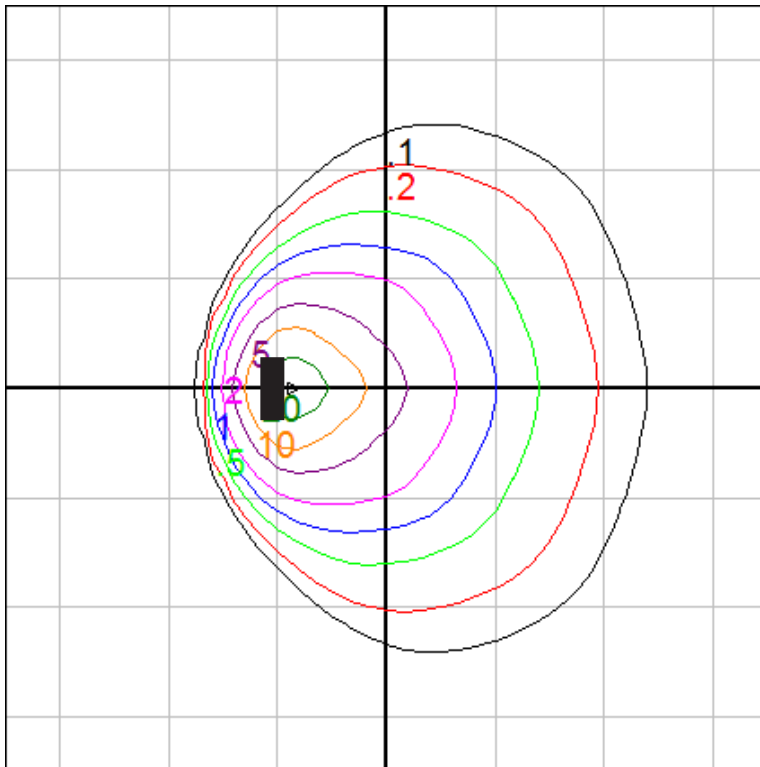
Characteristics

IES Classification	Type II
Longitudinal Classification	Very Short
Lumens Per Lamp	N.A. (absolute)
Total Lamp Lumens	N.A. (absolute)
Luminaire Lumens	3496
Downward Total Efficiency	N.A.
Total Luminaire Efficiency	N.A.
Luminaire Efficacy Rating (LER)	100
Total Luminaire Watts	35
Ballast Factor	1.00
Upward Waste Light Ratio	0.01
Max. Cd.	3254.1 (0H, 7.5V)
Max. Cd. (<90 Vert.)	3254.1 (0H, 7.5V)
Max. Cd. (At 90 Deg. Vert.)	84.3 (2.4%Lum)
Max. Cd. (80 to <90 Deg. Vert.)	185 (5.3%Lum)
Cutoff Classification (deprecated)	N.A. (absolute)

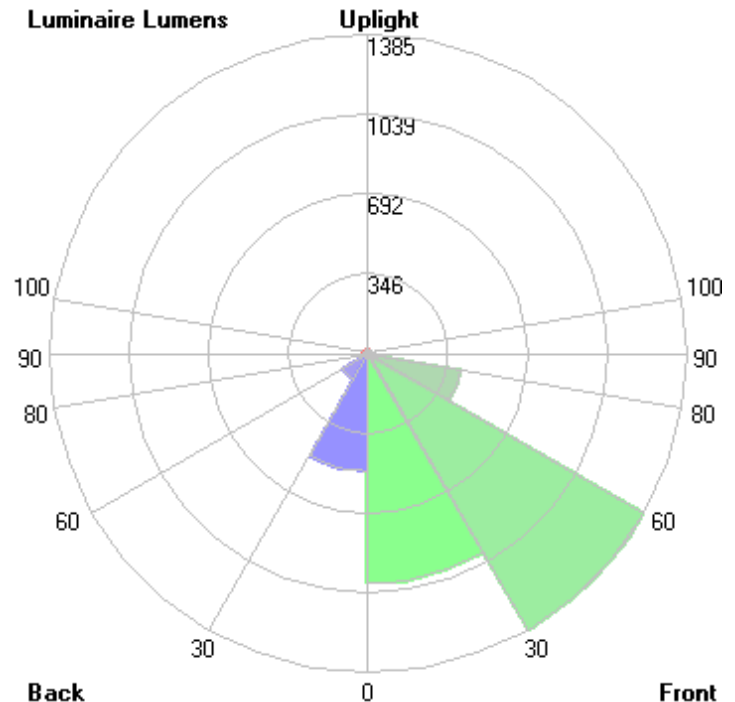
Lum. Classification System (LCS)

LCS Zone	Lumens	%Lamp	%Lum
FL(0-30)	998.4	N.A.	28.6
FM (30-60)	1384.9	N.A.	39.6
FH (60-80)	407.9	N.A.	11.7
FVH (80-90)	35.9	N.A.	1.0
BL (0-30)	510.4	N.A.	14.6
BM (30-60)	127.5	N.A.	3.6
BH (60-80)	1.1	N.A.	0.0
BVH (80-90)	0.1	N.A.	0.0
UL (90-100)	15.8	N.A.	0.5
UH (100-180)	14.0	N.A.	0.4
Total	3496.0	N.A.	100.0

BUG Rating B2-U2-G1



Wall Mounted Fixture - Isofootcandle Grid on Floor
 Mounting Height = 10 ft. Grid Spacing = 10 ft.



In the interest of product improvement, BEGA reserves the right to make technical changes without notice.