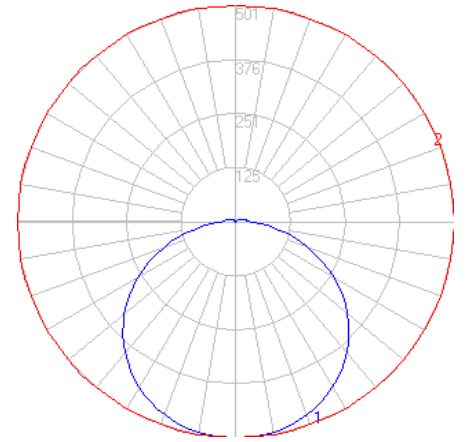


BEGA

Photometric Filename: 33234.IES

TEST: BE_33234
 TEST LAB: BEGA
 DATE: 11/27/2014
 LUMINAIRE: 33 234
 LAMP: 24W LED

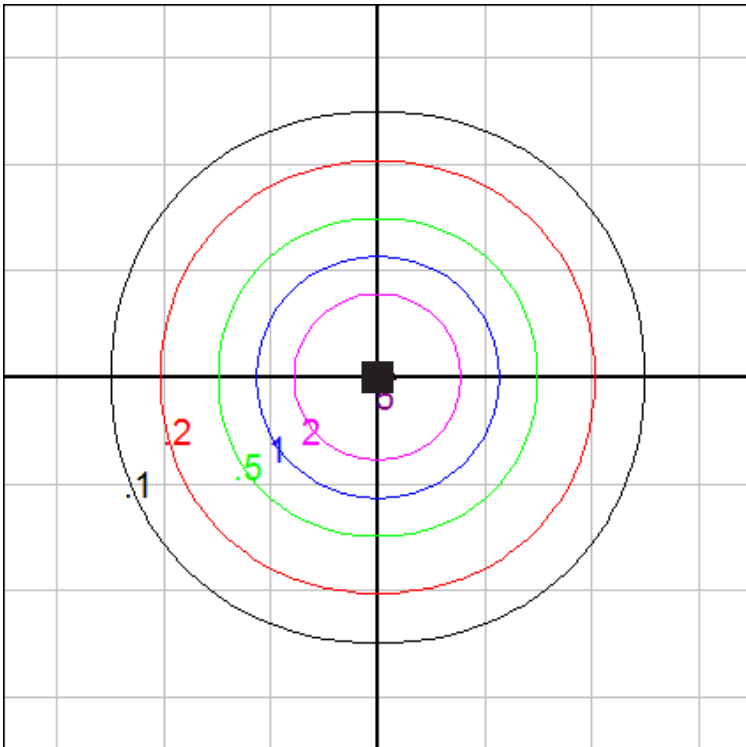


Characteristics

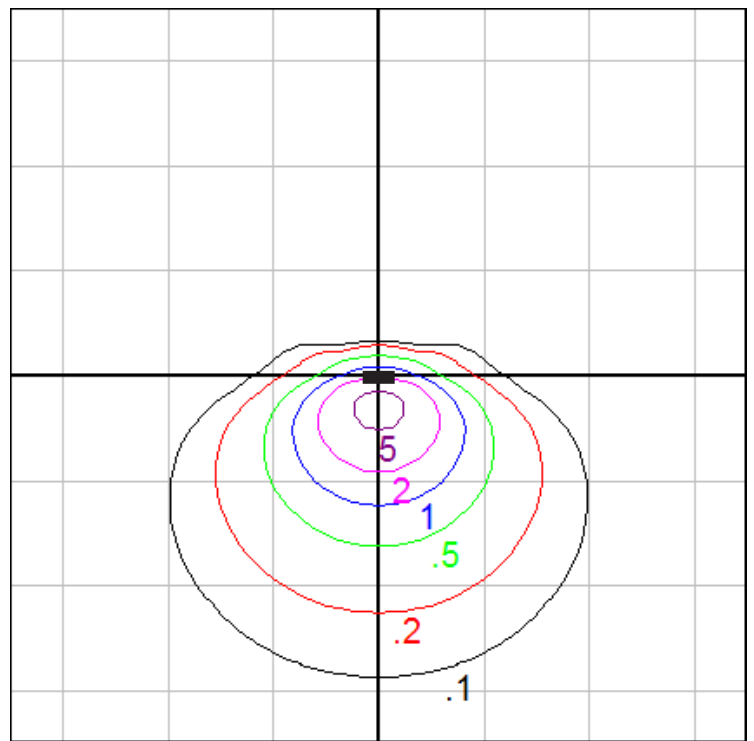
Lumens Per Lamp	N.A. (absolute)
Total Lamp Lumens	N.A. (absolute)
Luminaire Lumens	1739
Total Luminaire Efficiency	N.A.
Luminaire Efficacy Rating (LER)	60
Total Luminaire Watts	29
Ballast Factor	1.00
CIE Type	Direct
Spacing Criterion (0-180)	1.32
Spacing Criterion (90-270)	1.32
Spacing Criterion (Diagonal)	1.46
Basic Luminous Shape	Rectangular w/Sides
Luminous Length (0-180)	0.79 ft
Luminous Width (90-270)	0.79 ft
Luminous Height	0.08 ft

Zonal Lumen Summary

Zone	Lumens
0-10	47.65
10-20	138.37
20-30	214.20
30-40	265.91
40-50	286.46
50-60	272.44
60-70	224.71
70-80	150.31
80-90	72.15
90-100	34.44
100-110	21.85
110-120	9.07
120-130	0.75
130-140	0.00
140-150	0.00
150-160	0.03
160-170	0.11
170-180	0.06



Ceiling mount - isofootcandle grid on floor
 Mounting Height = 10 ft. Grid Spacing = 10 ft.



wall mount - isofootcandle grid on floor
 Mounting Height = 5 ft. Grid Spacing = 10 ft.

In the interest of product improvement, BEGA reserves the right to make technical changes without notice.