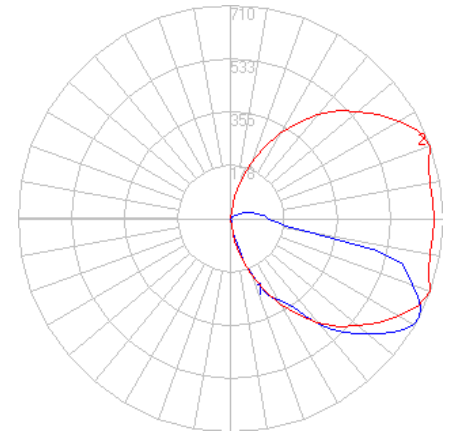


BEGA

Photometric Filename: 33062.ies

TEST: BE_33062
 TEST LAB: BEGA
 DATE: 8/11/2015
 LUMINAIRE: 33 062
 LAMP: 12.6W LED

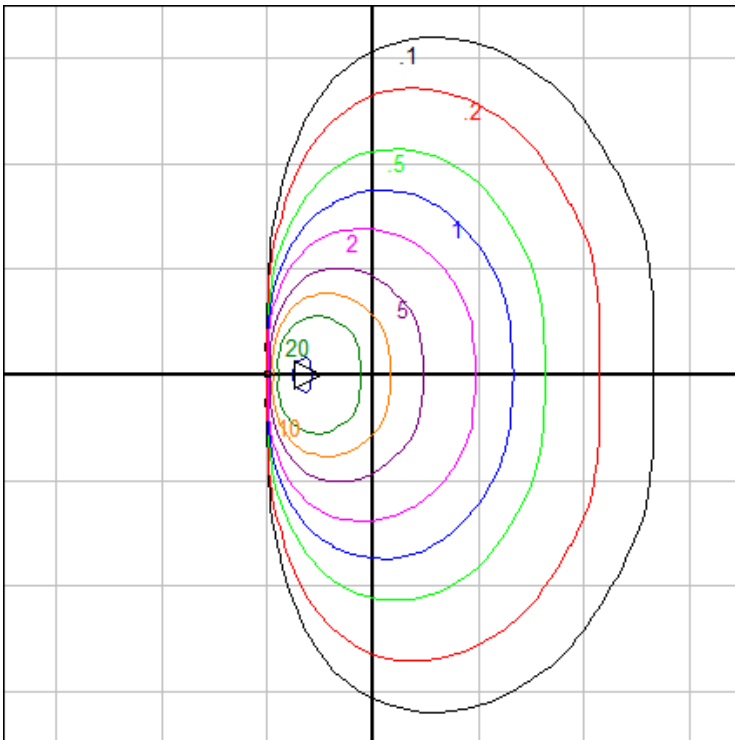


Characteristics

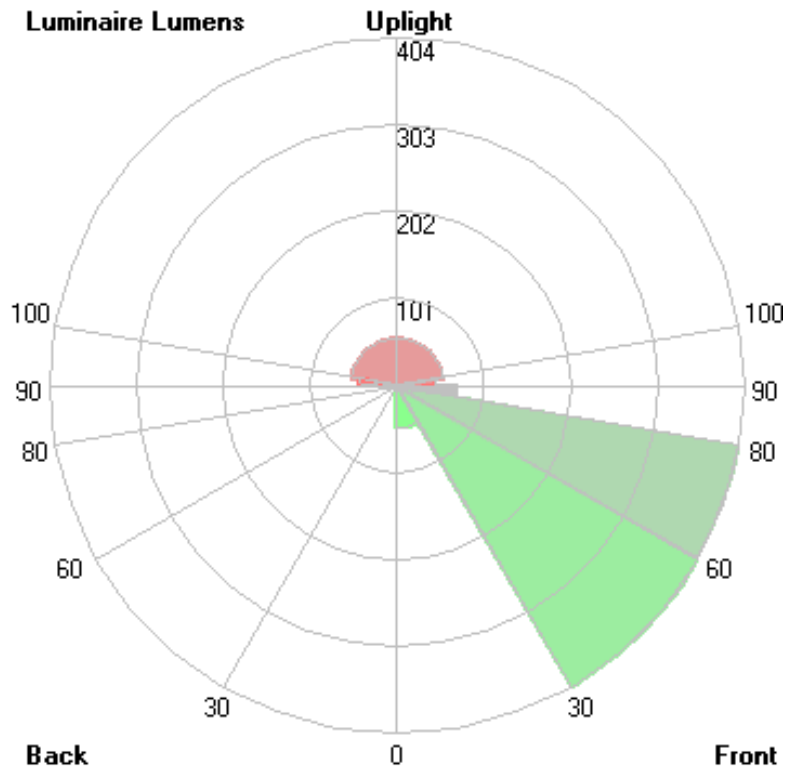
IES Classification	Type IV
Longitudinal Classification	Very Short
Lumens Per Lamp	N.A. (absolute)
Total Lamp Lumens	N.A. (absolute)
Luminaire Lumens	1023
Downward Total Efficiency	N.A.
Total Luminaire Efficiency	N.A.
Luminaire Efficacy Rating (LER)	68
Total Luminaire Watts	15
Ballast Factor	1.00
Upward Waste Light Ratio	0.10
Max. Cd.	710.2 (20H, 62.5V)
Max. Cd. (<90 Vert.)	710.2 (20H, 62.5V)
Max. Cd. (At 90 Deg. Vert.)	127.4 (12.5%Lum)
Max. Cd. (80 to <90 Deg. Vert.)	311.7 (30.5%Lum)
Cutoff Classification (deprecated)	N.A. (absolute)

Lum. Classification System (LCS)

LCS Zone	Lumens	%Lamp	%Lum
FL (0-30)	49.6	N.A.	4.8
FM (30-60)	403.9	N.A.	39.5
FH (60-80)	402.1	N.A.	39.3
FVH(80-90)	69.9	N.A.	6.8
BL (0-30)	< 0.05	N.A.	0.0
BM (30-60)	< 0.05	N.A.	0.0
BH (60-80)	< 0.05	N.A.	0.0
BVH(80-90)	< 0.05	N.A.	0.0
UL (90-100)	43.6	N.A.	4.3
UH (100-180)	54.2	N.A.	5.3
Total	1023.3	N.A.	100.0
BUG Rating	B0-U3-G1		



Mounting Height = 2 ft. Grid Spacing = 4 ft.



In the interest of product improvement, BEGA reserves the right to make technical changes without notice.