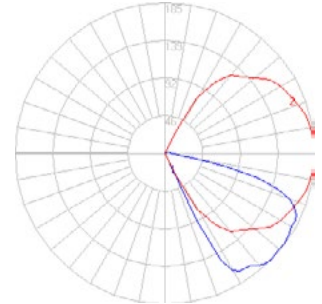


# BEGA

Photometric Filename: 33053.IES

TEST: 33053  
 TEST LAB: BEGA  
 DATE: 8/4/2015  
 LUMINAIRE: 33 053  
 LAMP: 4.1W LED



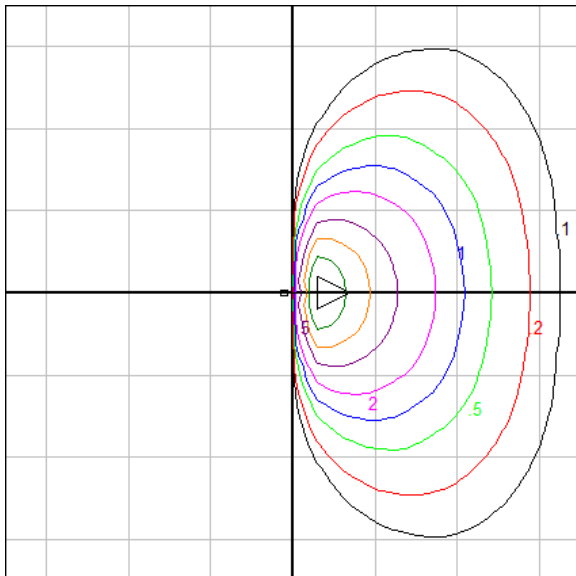
### Characteristics

IES Classification	Type IV
Longitudinal Classification	Very Short
Lumens Per Lamp	N.A. (absolute)
Total Lamp Lumens	N.A. (absolute)
Luminaire Lumens	231
Downward Total Efficiency	N.A.
Total Luminaire Efficiency	N.A.
Luminaire Efficacy Rating (LER)	38
Total Luminaire Watts	6
Ballast Factor	1.00
Upward Waste Light Ratio	0.02
Max. Cd.	184.8 (0H, 45V)
Max. Cd. (<90 Vert.)	184.8 (0H, 45V)
Max. Cd. (At 90 Deg. Vert.)	10.4 (4.5%Lum)
Max. Cd. (80 to <90 Deg. Vert.)	61.9 (26.8%Lum)
Cutoff Classification (deprecated)	N.A. (absolute)

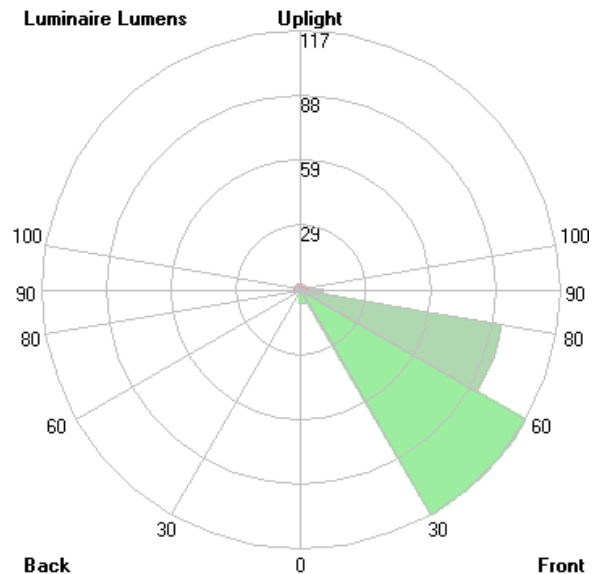
### Lum. Classification System (LCS)

LCS Zone	Lumens	%Lamp	%Lum
FL (0-30)	6.5	N.A.	2.8
FM (30-60)	117.4	N.A.	50.9
FH (60-80)	92.1	N.A.	39.9
FVH(80-90)	10.2	N.A.	4.4
BL (0-30)	< 0.05	N.A.	0.0
BM (30-60)	0.1	N.A.	0.0
BH (60-80)	0.1	N.A.	0.0
BVH(80-90)	< 0.05	N.A.	0.0
UL (90-100)	2.4	N.A.	1.1
UH (100-180)	2.1	N.A.	0.9
<b>Total</b>	<b>230.9</b>	<b>N.A.</b>	<b>100.0</b>

**BUG Rating B0-U1-G1**



Mounting Height = 1.5 ft. Grid Spacing = 2.5 ft.

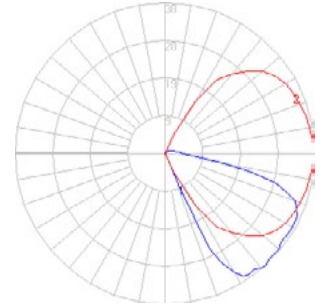


In the interest of product improvement, BEGA reserves the right to make technical changes without notice.

# BEGA

Photometric Filename: 33053AMB.IES

TEST: L081911601  
 TEST LAB: LIGHT LABORATORY, INC.  
 DATE: 8/21/2019  
 LUMINAIRE: 33 053 Amber  
 LAMP: 3.6W LED



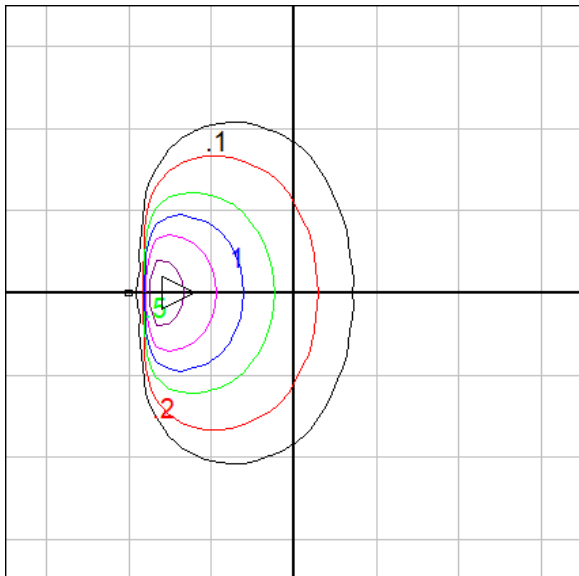
## Characteristics

IES Classification	Type IV
Longitudinal Classification	Very Short
Lumens Per Lamp	N.A. (absolute)
Total Lamp Lumens	N.A. (absolute)
Luminaire Lumens	56
Downward Total Efficiency	N.A.
Total Luminaire Efficiency	N.A.
Luminaire Efficacy Rating (LER)	12
Total Luminaire Watts	4.61
Ballast Factor	1.00
Upward Waste Light Ratio	0.05
Max. Cd.	37.967 (0H, 42.5V)
Max. Cd. (<90 Vert.)	37.967 (0H, 42.5V)
Max. Cd. (At 90 Deg. Vert.)	6.008 (10.7%Lum)
Max. Cd. (80 to <90 Deg. Vert.)	19.529 (34.9%Lum)
Cutoff Classification (deprecated)	N.A. (absolute)

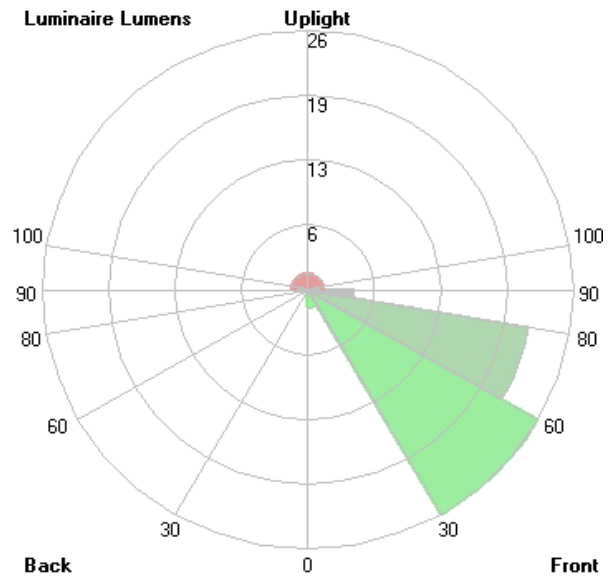
## Lum. Classification System (LCS)

LCS Zone	Lumens	%Lamp	%Lum
FL (0-30)	1.8	N.A.	3.2
FM (30-60)	25.7	N.A.	45.3
FH (60-80)	21.6	N.A.	38.1
FVH(80-90)	4.4	N.A.	7.8
BL (0-30)	< 0.05	N.A.	0.0
BM (30-60)	0.0	N.A.	0.0
BH (60-80)	0.0	N.A.	0.0
BVH(80-90)	0.0	N.A.	0.0
UL (90-100)	1.5	N.A.	2.6
UH (100-180)	1.6	N.A.	2.7
<b>Total</b>	<b>56.6</b>	<b>N.A.</b>	<b>100.0</b>

**BUG Rating B0-U1-G0**



Mounting Height = 1.5 ft. Grid Spacing = 2.5 ft.



In the interest of product improvement, BEGA reserves the right to make technical changes without notice.