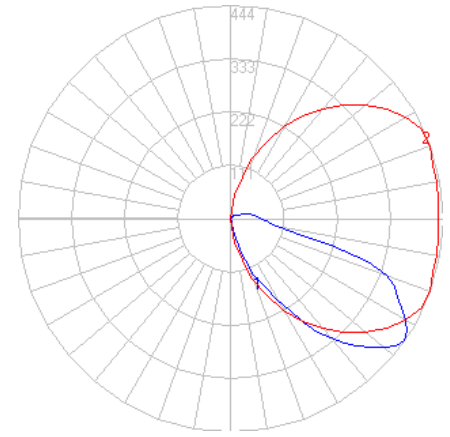


# BEGA

Photometric Filename: 33049.ies

TEST: BE\_33049  
 TEST LAB: BEGA  
 DATE: 8/11/2015  
 LUMINAIRE: 33 049  
 LAMP: 8.2W LED

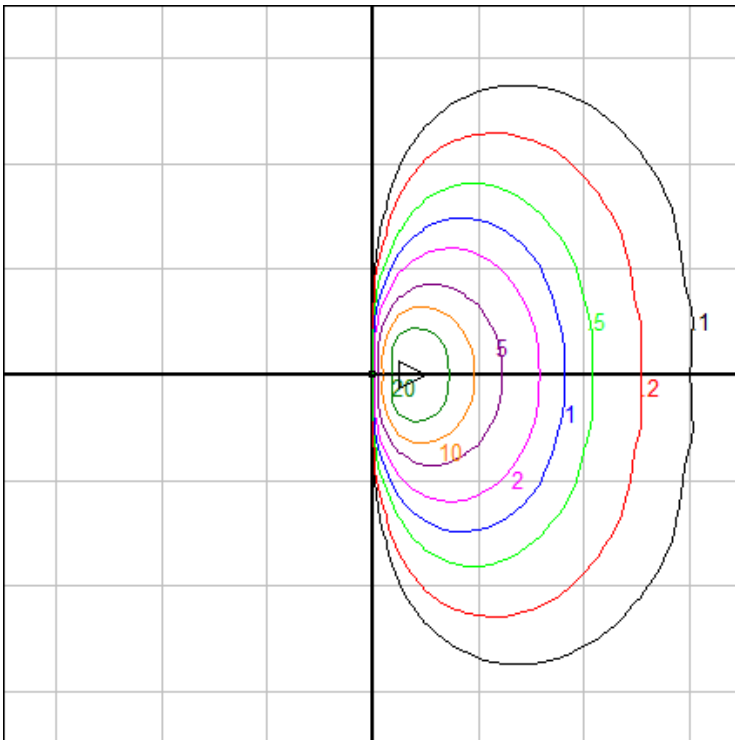


### Characteristics

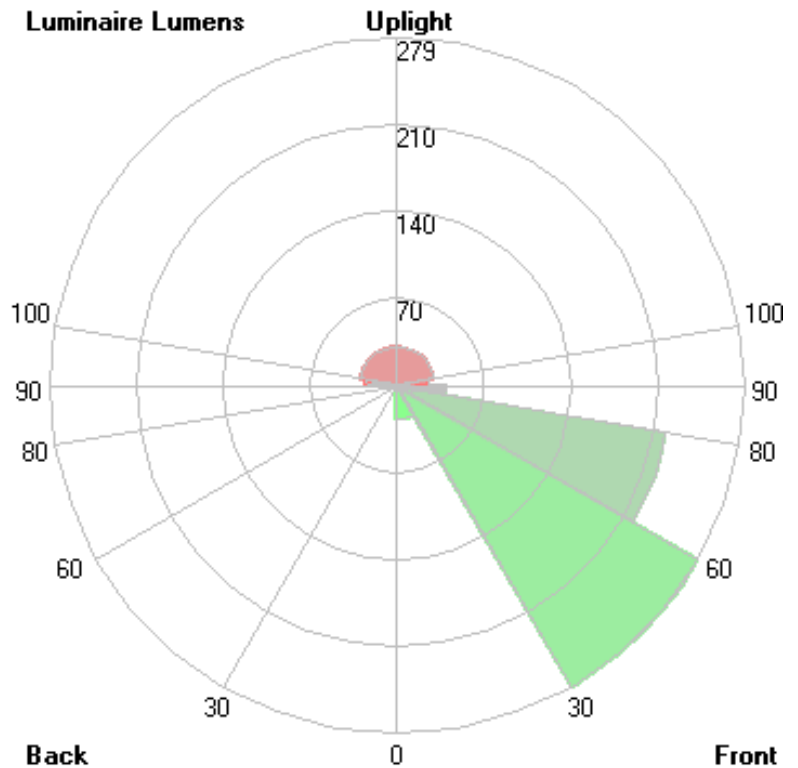
IES Classification	Type IV
Longitudinal Classification	Very Short
Lumens Per Lamp	N.A. (absolute)
Total Lamp Lumens	N.A. (absolute)
Luminaire Lumens	621
Downward Total Efficiency	N.A.
Total Luminaire Efficiency	N.A.
Luminaire Efficacy Rating (LER)	56
Total Luminaire Watts	11
Ballast Factor	1.00
Upward Waste Light Ratio	0.09
Max. Cd.	443.6 (20H, 55V)
Max. Cd. (<90 Vert.)	443.6 (20H, 55V)
Max. Cd. (At 90 Deg. Vert.)	78.1 (12.6%Lum)
Max. Cd. (80 to <90 Deg. Vert.)	133.5 (21.5%Lum)
Cutoff Classification (deprecated)	N.A. (absolute)

### Lum. Classification System (LCS)

LCS Zone	Lumens	%Lamp	%Lum
FL (0-30)	27.5	N.A.	4.4
FM (30-60)	279.3	N.A.	45.0
FH (60-80)	218.9	N.A.	35.3
FVH(80-90)	38.9	N.A.	6.3
BL (0-30)	< 0.05	N.A.	0.0
BM (30-60)	< 0.05	N.A.	0.0
BH (60-80)	< 0.05	N.A.	0.0
BVH(80-90)	< 0.05	N.A.	0.0
UL (90-100)	25.8	N.A.	4.1
UH (100-180)	30.3	N.A.	4.9
<b>Total</b>	<b>620.7</b>	<b>N.A.</b>	<b>100.0</b>
<b>BUG Rating</b>	<b>B0-U2-G1</b>		



Mounting Height = 2 ft. Grid Spacing = 4 ft.



In the interest of product improvement, BEGA reserves the right to make technical changes without notice.