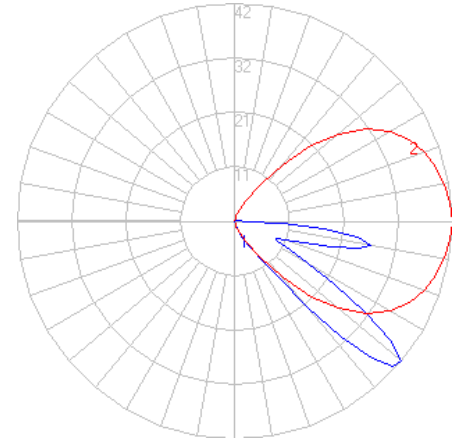


BEGA

Photometric Filename: 33017.ies

TEST: 33017
 TEST LAB: BEGA
 DATE: 8/25/2015
 LUMINAIRE: 33 017
 LAMP: 2W LED

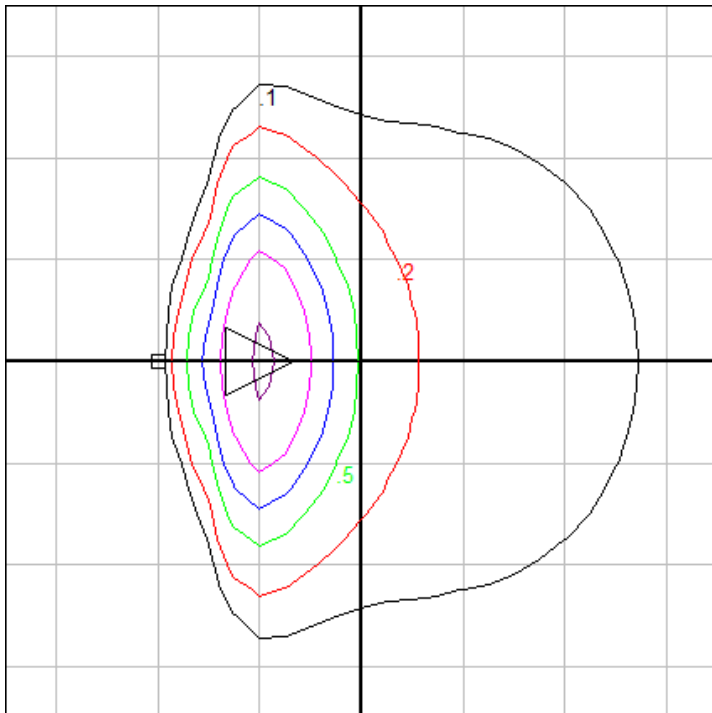


Characteristics

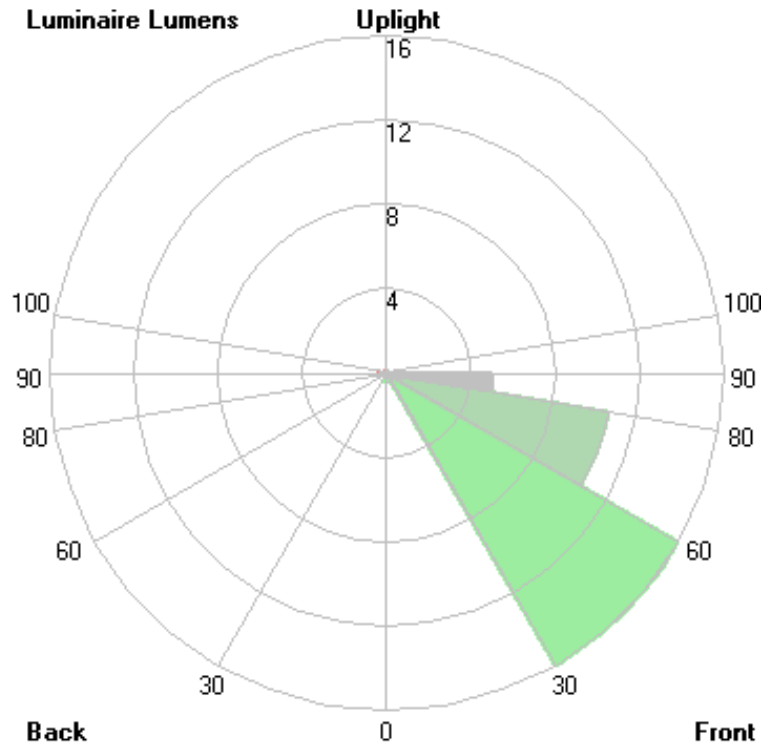
IES Classification	Type IV
Longitudinal Classification	Very Short
Lumens Per Lamp	N.A. (absolute)
Total Lamp Lumens	N.A. (absolute)
Luminaire Lumens	32
Downward Total Efficiency	N.A.
Total Luminaire Efficiency	N.A.
Luminaire Efficacy Rating (LER)	11
Total Luminaire Watts	3
Ballast Factor	1.00
Upward Waste Light Ratio	0.01
Max. Cd.	42.4 (0H, 50V)
Max. Cd. (<90 Vert.)	42.4 (0H, 50V)
Max. Cd. (At 90 Deg. Vert.)	3.1 (9.7%Lum)
Max. Cd. (80 to <90 Deg. Vert.)	27 (84.4%Lum)
Cutoff Classification (deprecated)	N.A. (absolute)

Lum. Classification System (LCS)

LCS Zone	Lumens	%Lamp	%Lum
FL (0-30)	0.5	N.A.	1.5
FM (30-60)	15.7	N.A.	49.0
FH (60-80)	10.5	N.A.	32.7
FVH(80-90)	4.9	N.A.	15.4
BL (0-30)	0.0	N.A.	0.0
BM (30-60)	0.0	N.A.	0.0
BH (60-80)	0.0	N.A.	0.0
BVH(80-90)	0.0	N.A.	0.0
UL (90-100)	0.3	N.A.	0.9
UH (100-180)	0.1	N.A.	0.4
Total	32.0	N.A.	100.0
BUG Rating	B0-U1-G0		



Mounting Height = 1.5 ft. Grid Spacing = 1.5 ft.

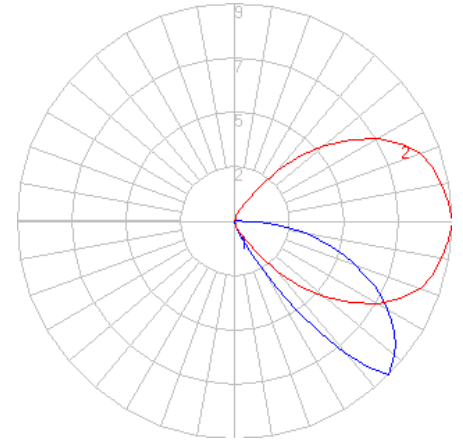


In the interest of product improvement, BEGA reserves the right to make technical changes without notice.

BEGA

Photometric Filename: 33017AMB.ies

TEST: L081911602
 TEST LAB: LIGHT LABORATORY, INC.
 DATE: 8/21/2019
 LUMINAIRE: 33 017 Amber
 LAMP: 2.0W LED



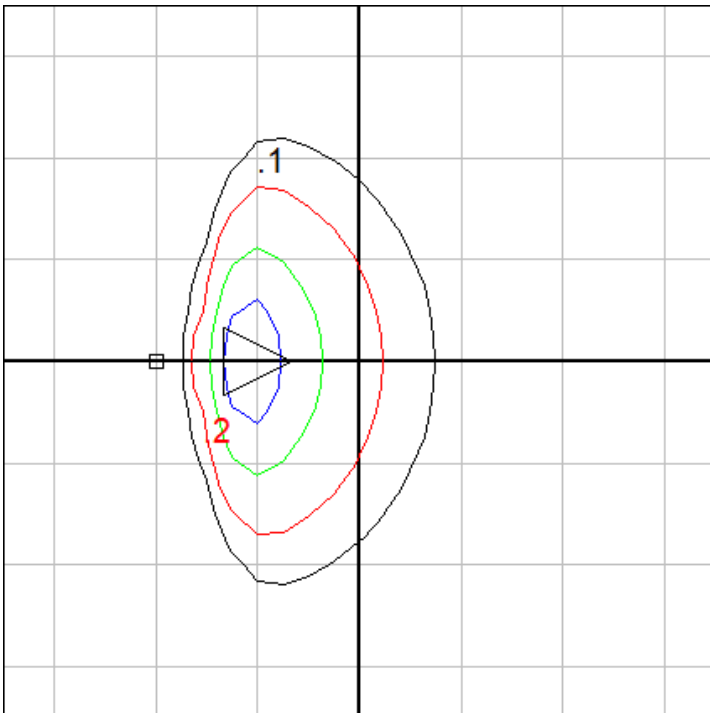
Characteristics

IES Classification	Type IV
Longitudinal Classification	Very Short
Lumens Per Lamp	N.A. (absolute)
Total Lamp Lumens	N.A. (absolute)
Luminaire Lumens	10
Downward Total Efficiency	N.A.
Total Luminaire Efficiency	N.A.
Luminaire Efficacy Rating (LER)	2
Total Luminaire Watts	4.96
Ballast Factor	1.00
Upward Waste Light Ratio	0.02
Max. Cd.	9.431 (0H, 45V)
Max. Cd. (<90 Vert.)	9.431 (0H, 45V)
Max. Cd. (At 90 Deg. Vert.)	.437 (4.4%Lum)
Max. Cd. (80 to <90 Deg. Vert.)	3.089 (30.9%Lum)
Cutoff Classification (deprecated)	N.A. (absolute)

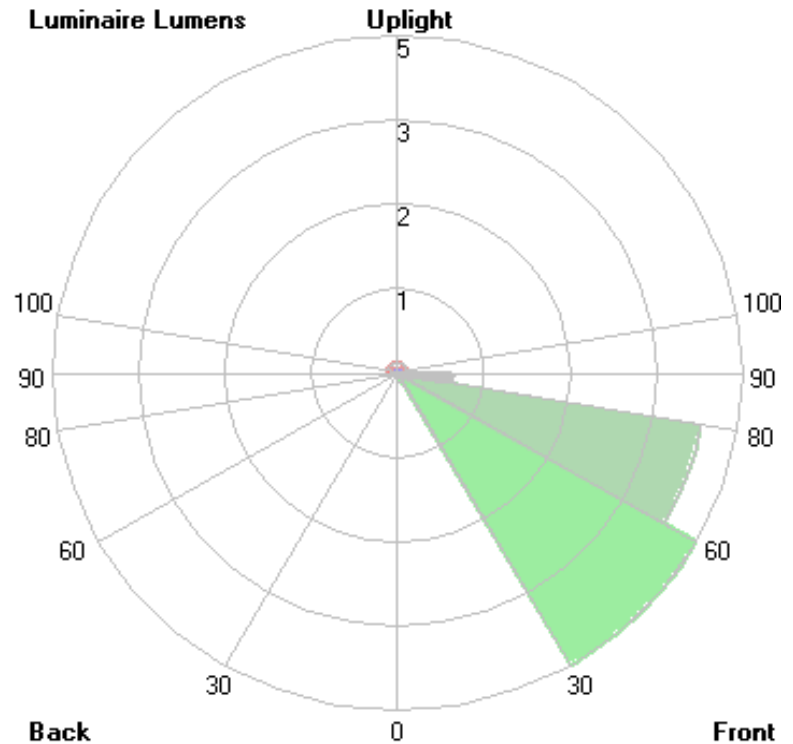
Lum. Classification System (LCS)

LCS Zone	Lumens	%Lamp	%Lum
FL (0-30)	0.1	N.A.	1.3
FM (30-60)	4.5	N.A.	47.6
FH (60-80)	4.0	N.A.	42.4
FVH(80-90)	0.7	N.A.	7.8
BL (0-30)	0.0	N.A.	0.0
BM (30-60)	0.0	N.A.	0.0
BH (60-80)	0.0	N.A.	0.0
BVH(80-90)	0.0	N.A.	0.0
UL (90-100)	0.1	N.A.	0.9
UH (100-180)	0.1	N.A.	1.4
Total	9.5	N.A.	100.0

BUG Rating B0-U1-G0



Mounting Height = 1.5 ft. Grid Spacing = 1.5 ft.



In the interest of product improvement, BEGA reserves the right to make technical changes without notice.