

Application

Pillar luminaire with partially shielded light distribution. A combination of materials in perfect harmony with this classic luminaire shape.

Materials

Hand-blown three-ply opal glass
 99.9% pure copper
 Self-expanding sleeve anchors for pre-cast concrete

NRTL listed to North American Standards, suitable for wet locations
 Protection class IP 65

Weight: 20.7 lbs.

Electrical

Operating voltage 120, 240 or 277VAC
 Minimum start temperature -30° C
 Maximum ambient temperature 90° C
 LED module wattage 22.0 W
 System wattage 25.5 W
 Controllability 0-10V dimmable
 Color rendering index Ra > 80
 Luminaire lumens 1342 lm
 LED service life (L70) 60000 hrs

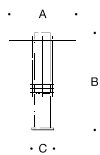
LED color temperature

4000K (K4)
 3500K (K35)
 3000K (K3)
 2700K (K27)

BEGA can supply you with suitable LED replacement modules for up to 20 years after the purchase of LED luminaires - see website for details

Finish

Natural cast bronze and copper finish. Time and weather factors will create the natural patina of bronze and copper.



Cast bronze and copper pillar luminaire · Unshielded

	LED	A	B	C
B31437	22.0W	17 ³ / ₄	27 ⁵ / ₈	6 ⁷ / ₈

Type:
 BEGA Product:
 Project:
 Modified:

